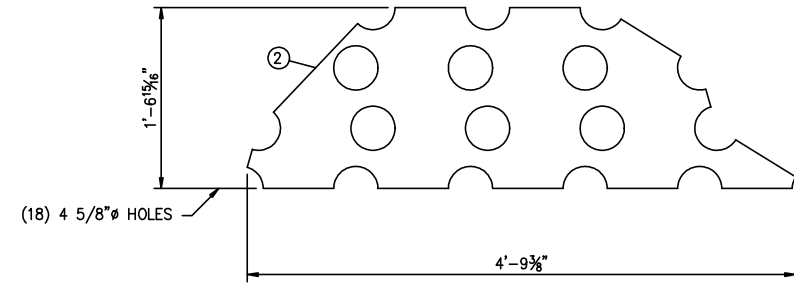
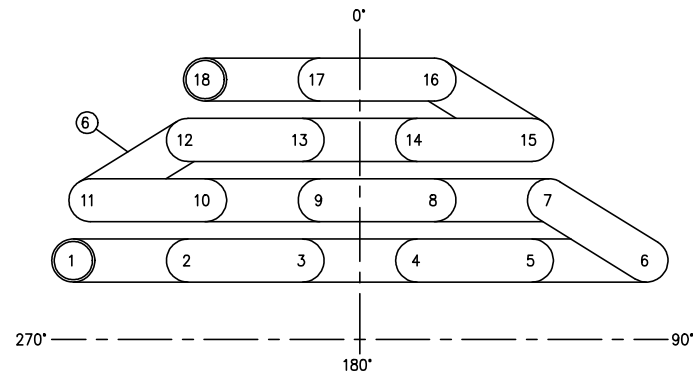


181048COIL



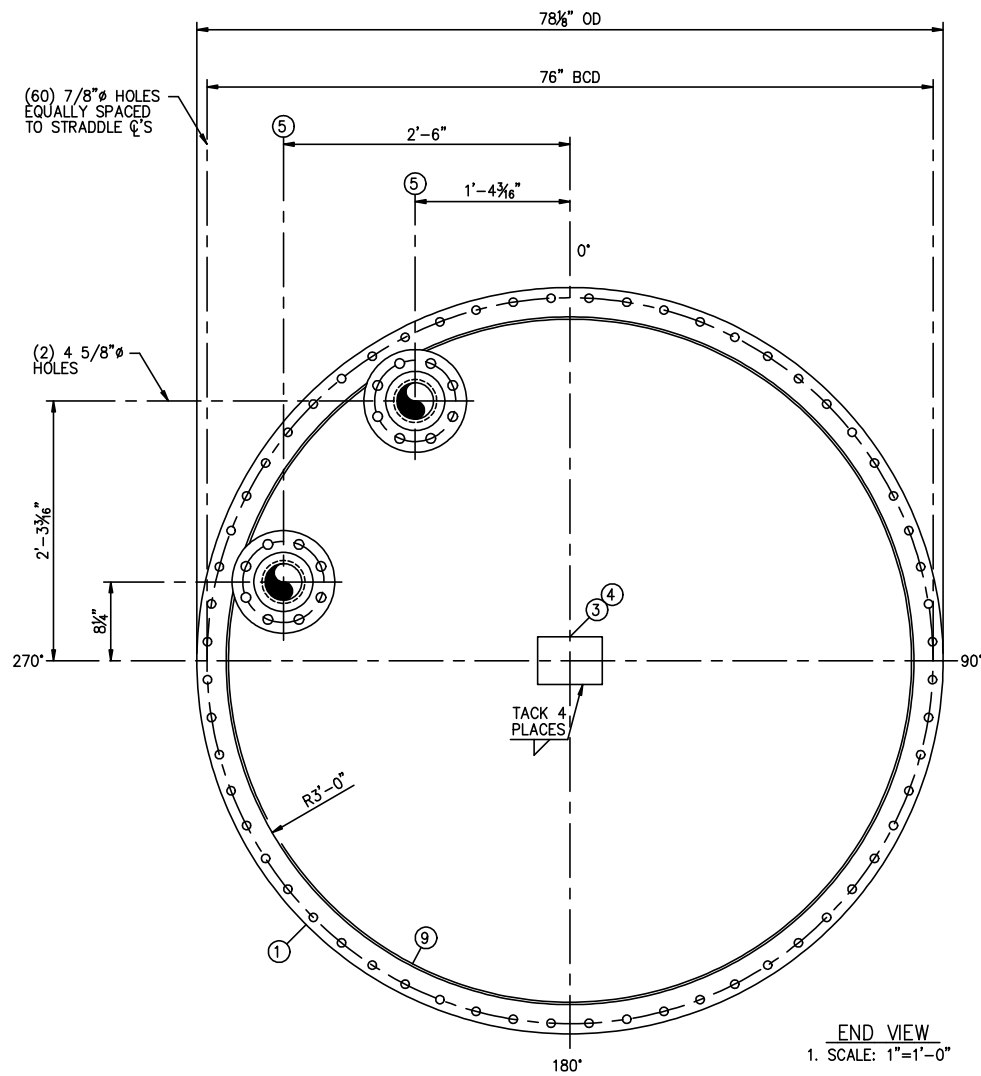
COIL SUPPORT DETAIL
ITEM #2
1. SCALE: 1"=1'-0"



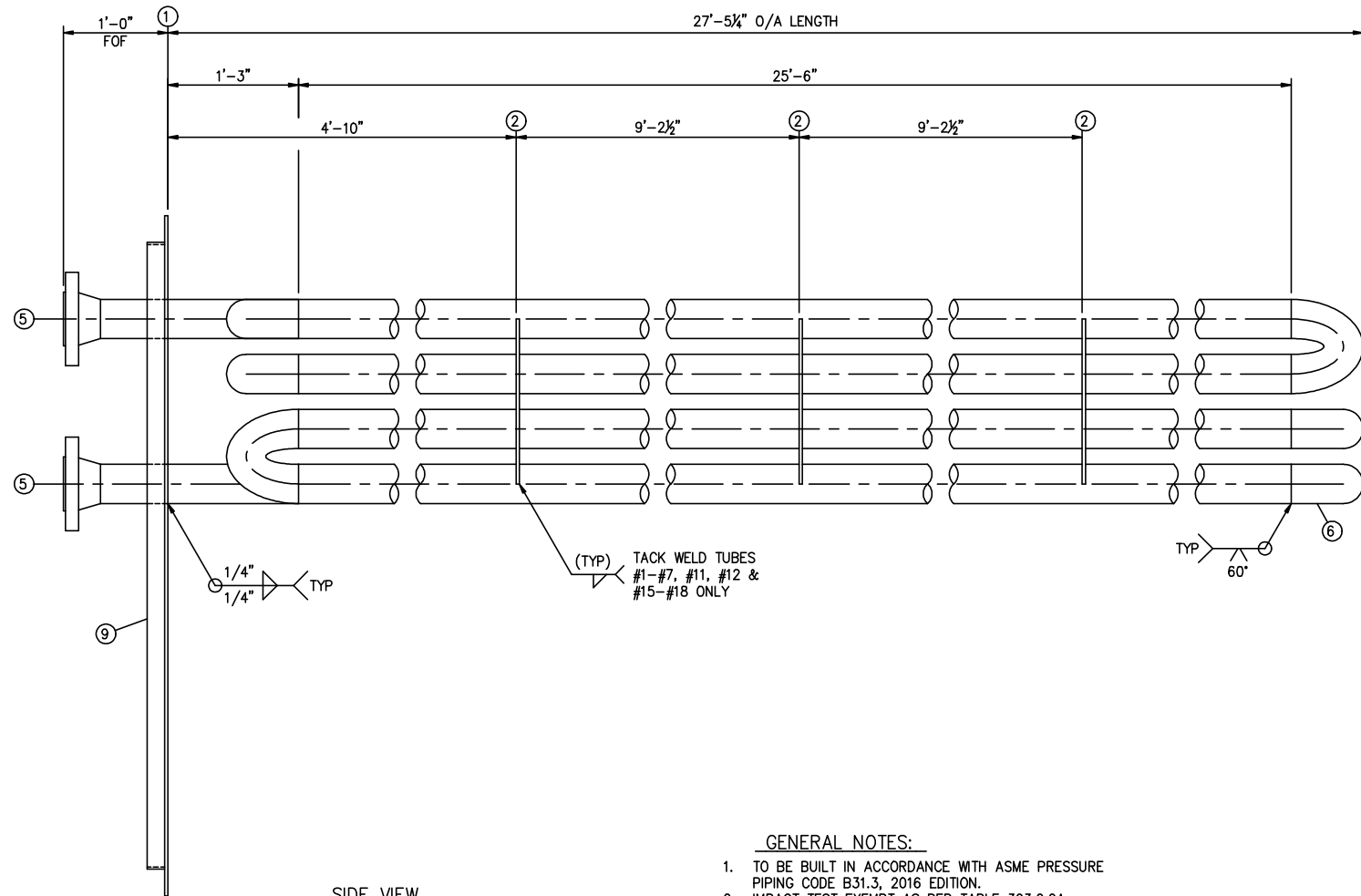
TUBE NUMBERING AND
RETURN BEND LAYOUT
1. SCALE: 1"=1'-0"

TUBES #1 & #18
TUBES #2-#17

ITEM NO.	PART NO. OR REQ. NO.	QTY. FOR ONE	TOTAL QTY. REQ'D	DESCRIPTION	MATERIAL
1		1		78 1/8" OD x 3/8" PL	CSA G40.21 44W
2		3		1'-6 15/16" x 3/8" PL x 4'-9 3/8" LG	CSA G40.21 44W
3		1		NAME PL	ST STL
4		1		NAME PL BRACKET	CSA G40.21 44W
5		2		4" CL600 RFWN FLG w/SCH XH BORE	SA-105N
6		17		4" SCH XH 180° LRBW RETURN BEND	SA-234WPB
7		2		4" SCH XH SMLS PIPE x 27'-4 3/4" LG (BBE)	SA-106B
8		16		4" SCH XH SMLS PIPE x 25'-6" LG (BBE)	SA-106B
9		1		2" x 1/4" FB x 18'-9 3/8" LG (ROLL TO 72" OD)	CSA G40.21 44W
FOR				FURNISH FOR ASSEMBLY	
1		1		78 1/8" OD x 1/8" GSKT x 71 1/2" ID w/(60) 7/8" Ø	GARLOCK2900
				HOLES EQUALLY SPACED TO STRADDLE Q'S ON 76" BCD	
1		60		3/4" Ø x 2" LG HEX HD BOLTS	SAE-J429GR.5
1		60		3/4" Ø HEX NUTS	SA-194-2H



END VIEW
1. SCALE: 1"=1'-0"



SIDE VIEW
1. SCALE: 1"=1'-0"

- GENERAL NOTES:
- TO BE BUILT IN ACCORDANCE WITH ASME PRESSURE PIPING CODE B31.3, 2016 EDITION.
 - IMPACT TEST EXEMPT AS PER TABLE 323.2.2A
 - COMMERCIAL SANDBLAST TO SSPC SP7.
 - PAINT: PER GS-6100, REFER TO PDL
 - INSULATION: 2", PER GS-6300, REFER TO PDL
 - PLUG ALL OPENINGS FOR SHIPMENT.
 - WELD PROCEDURE: SH17/H17
 - APPROX WT: 8500 lbs.

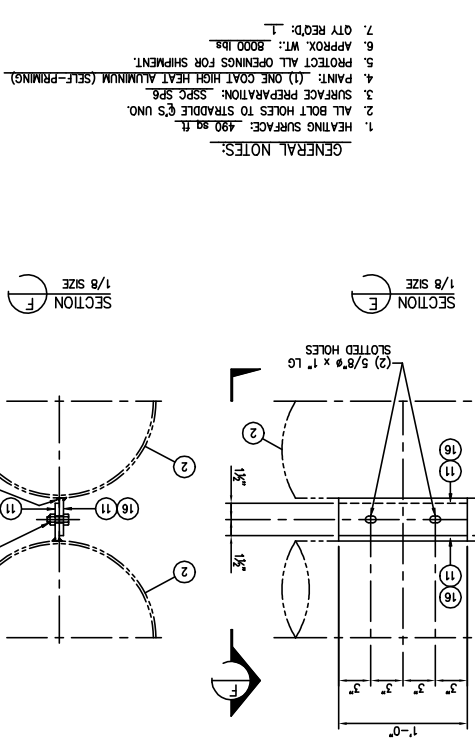
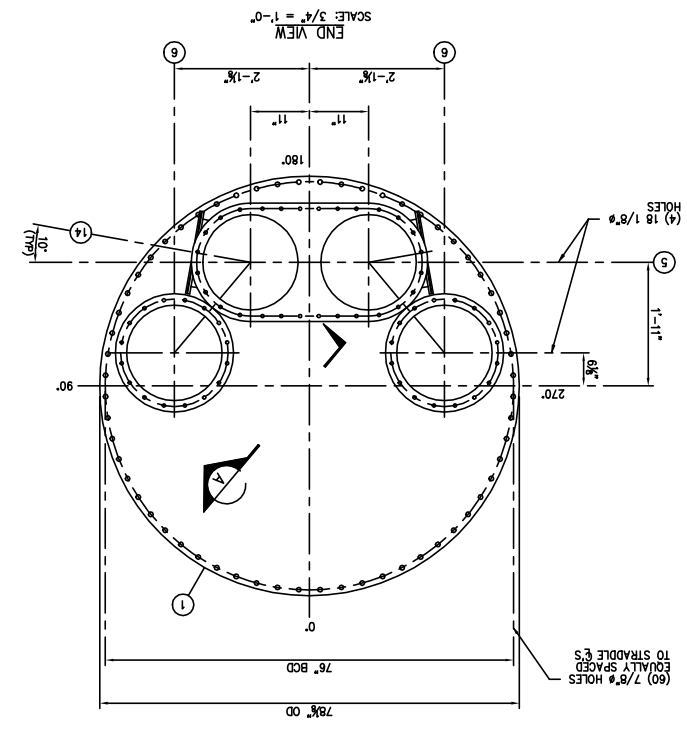
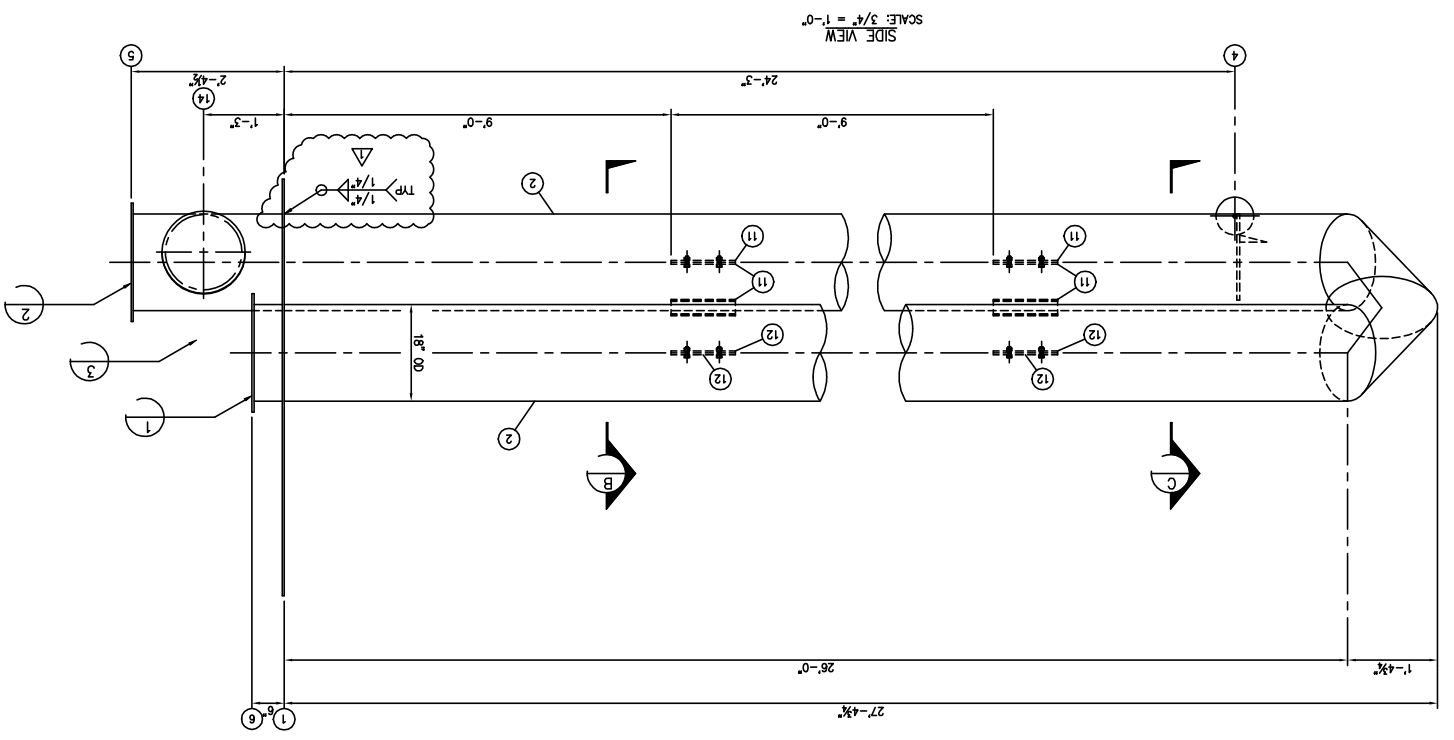
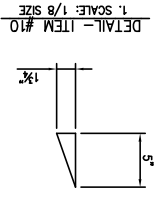
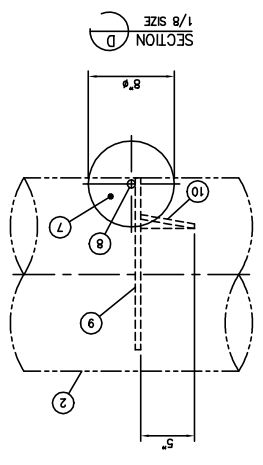
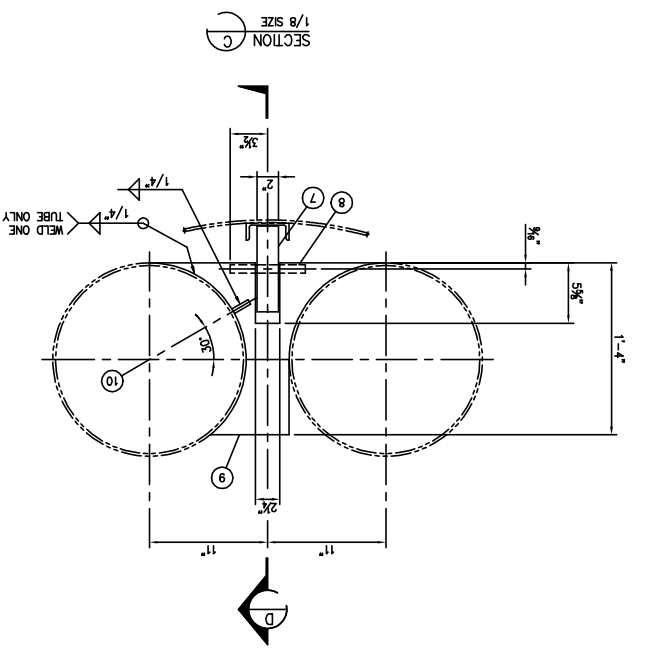
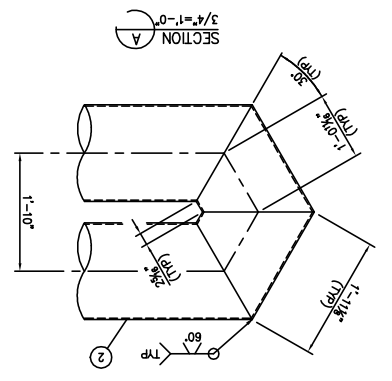
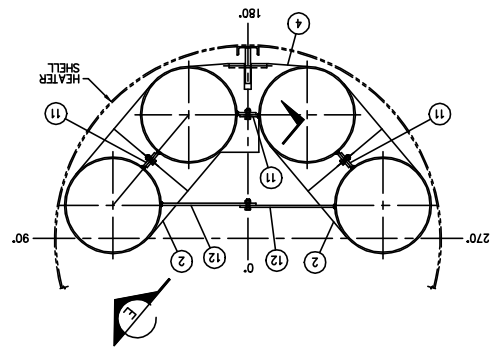
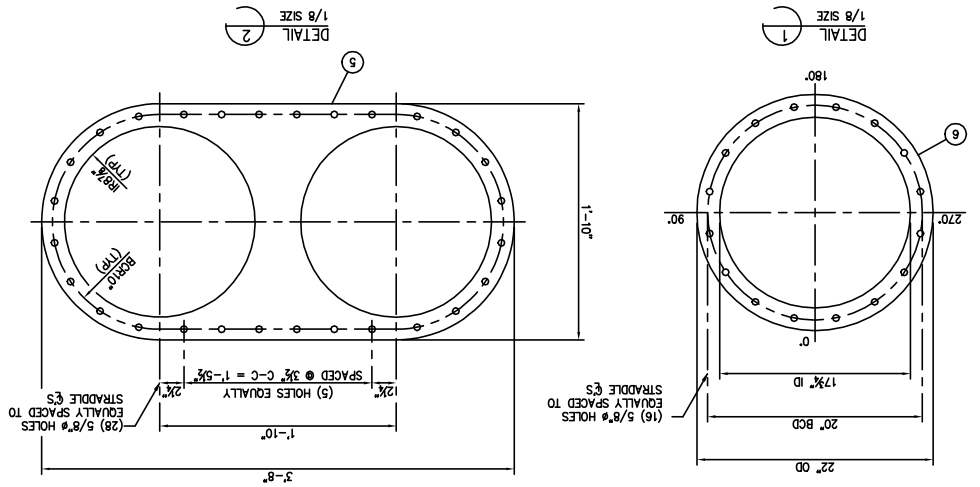
	COIL #1		
MAWP @ 600°F	1135 PSIG		
MDMT	-20°F		
LTD BY	FLANGES		
HYDROTEST	1703 PSIG		
CA	0.125"		
RADIOGRAPHY	100%		
HEATING SURFACE	594 sq ft		
VOLUME	40 cu ft		
CRN	Y8483.2		
PWHT		60 min @ 1150°F (±25°F)	

REV.	DESCRIPTION	BY	CHK'D	DATE
1	AS BUILT	SDC	WT	NOV08/18
0	ISSUED FOR CONSTRUCTION	MN	WT	JUL15/18
A	ISSUED FOR APPROVAL	MN	WT	JUL03/18

THIS DRAWING IS THE PROPERTY OF FOURSTAR RESOURCES INC. AND IS NOT TO BE PRINTED, PHOTOGRAPHED, COPIED, LOANED OR USED WITHOUT ITS PERMISSION

	FOURSTAR RESOURCES INC. NISKU, ALBERTA, CANADA		4"-18 TUBE S/P COIL FOR FSR4000IH INDIRECT HEATER	
	DRAWN BY: MN DATE: JUL03/18	CHECKED BY: WT DATE: JUL03/18	DRAWING NO. 181048COIL	
	APPROVED BY: WT DATE: JUL03/18	SCALE: AS SHOWN		

ITEM NO.	PART NO. OR REG. NO.	QTY. FOR QTY. TOTAL	DESCRIPTION	MATERIAL
1		1	78 1/8" OD x 3/8" PL x 71 1/2" ID	SA-53B
2		2	18 0.25" WALL ENW PIPE x 56-11 1/2" LG	SA-53B
4		1	ROLLER ASSEMBLY (ITEM #10)	
5		1	1'-10" x 3/8" PL x 3'-5" LG (SEE DETAIL)	44W
6		2	22" OD x 3/8" PL x 17 3/4" ID	44W
7		1	8" OD x 2" WIDE x 3/4" ID BUYOUT WHEEL	STEEL
8		1	3/4" RB x 7" LG	44W
9		1	1'-4" x 1/2" PL x 1'-10" LG (TRM)	44W
10		1	1 3/4" x 1/2" FB x 5" LG (TRM)	44W
11		1	3 1/2" x 3/8" PL x 1'-0" LG	44W
12		4	1'-0" x 3/8" PL x 1'-5 5/8" LG	44W
13		2	15 1/2" OD x 1/4" PL x 12 1/8" ID	44W
14		2	15 1/2" OD x 1/4" PL	44W
15		2	12 0.188" WALL ENW PIPE x 4 1/4" LG	SA-53B
FOR			FURNISH FOR ASSEMBLY	
1		1	78 1/8" OD x 1/8" CSKT x 71 1/2" ID	NA-60
1		1	W/ (60) 7/8" HOLES EQUALLY SPACED TO STRADDLE	
1		1	CS ON 76" BCD	
1		60	3/4" x 2 1/2" LG HEX HD BOLTS	SAE-429GR.5
1		60	3/4" x 2 1/2" LG HEX HD NUTS	SAE-429GR.5
13		8	1/2" x 1 1/4" LG HEX HD BOLT	SAE-429GR.5
13		8	1/2" x 1 1/4" LG HEX HD NUT	SAE-429GR.5



- GENERAL NOTES:
1. HEATING SURFACE: 490 sq. ft.
 2. ALL BOLT HOLES TO STRADDLE CS UNO.
 3. SURFACE PREPARATION: SSPC SP6.
 4. PAINT: (1) ONE COAT HIGH HEAT ALUMINUM (SELF-PRIMING).
 5. PROTECT ALL OPENINGS FOR SHIPMENT.
 6. APPROX. WT.: 4800 lbs.
 7. QTY REQ'D: 1.

REV.	DESCRIPTION	BY	CHKD.	DATE
0	ISSUED FOR CONSTRUCTION			
1	CORRECTED WELD SIZE			

DATE	DATE CHECKED BY	DATE	DATE CHECKED BY
DEC03/17	WT	DEC03/17	WT

WT	ALDZ/18	WT	ALDZ/18
AS SHOWN		AS SHOWN	

DEVON CANADA CORP
HOT WATER VAPOR PROCESS PLANT (2269)
PO# 450095552 SO# 181048

THIS DRAWING IS THE PROPERTY OF FURSTAR RESOURCES INC. AND IS NOT TO BE REPRODUCED, COPIED, LOANED OR USED WITHOUT ITS PERMISSION.

FOURSTAR RESOURCES INC.
NISKU, ALBERTA, CANADA

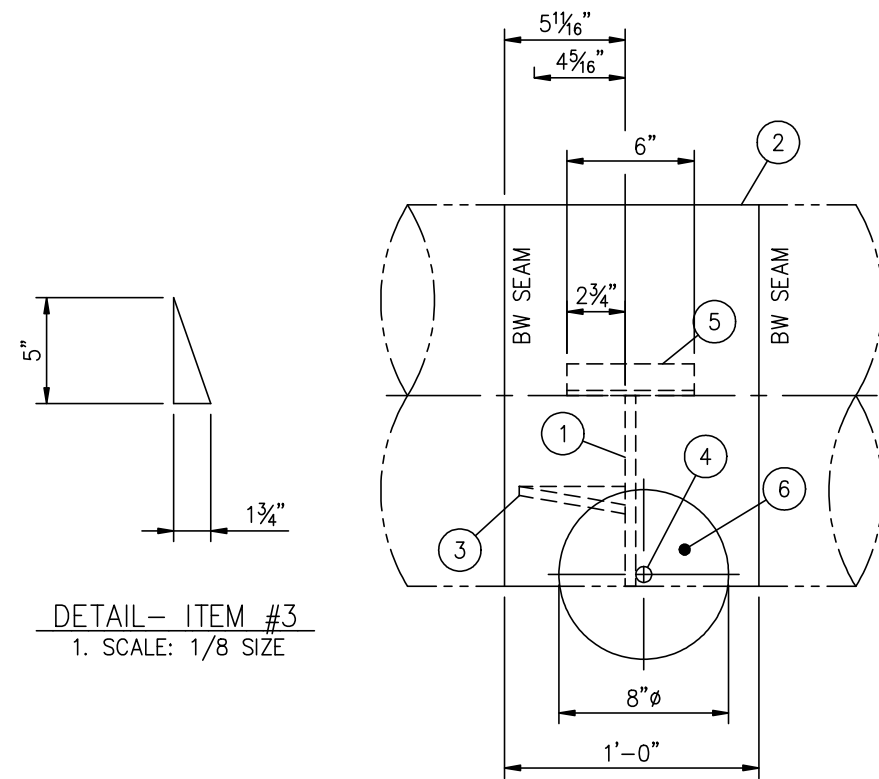
DRAMA BR: DEC03/17
MUN: DEC03/17

18" OD x 27'-0" LG
TWIN TUBE FBX FOR
FSR4000IH INDIRECT HEATER

181048FBX

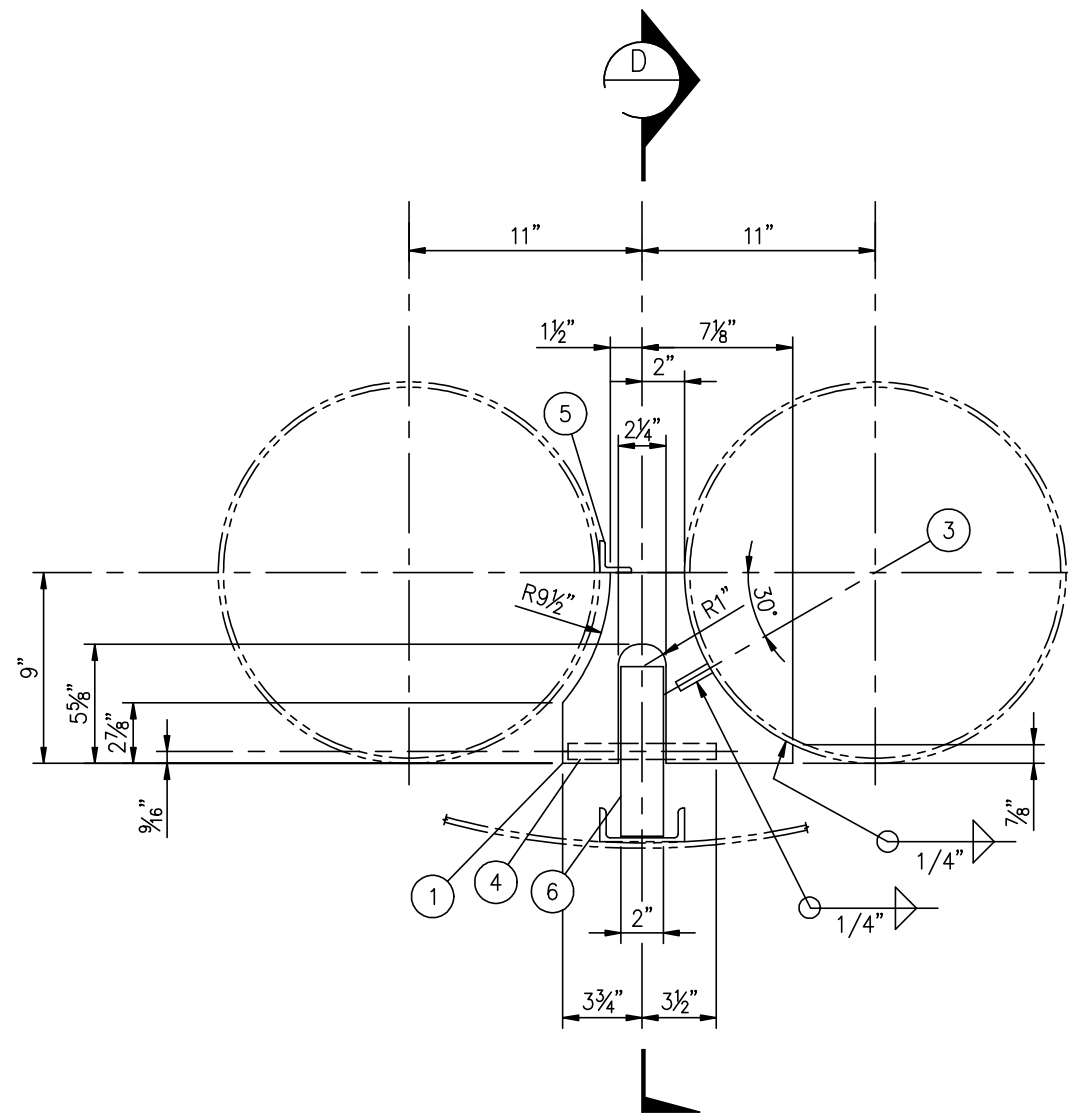
181048FBX

ITEM NO.	PART NO. OR REQ. NO.	QTY. FOR ONE	TOTAL QTY. REQ.'D	DESCRIPTION	MATERIAL
1	ATTACHMENT PL	1		0'-9" x 1/2" PL x 0'-10 7/8" LG (TRIM)	CSA G40.21 44W
2	REPLACEMENT PUP	2		18" 0.25" WALL ERW PIPE x 1'-0" LG	SA-53B
3	GUSSET	1		1 3/4" x 1/2" FB x 5" LG (TRIM)	CSA G40.21 44W
4	AXLE	1		3/4"Ø RB x 7" LG	CSA G40.21 44W
5	BEARING BAR	1		1 1/2" x 1/4" ANGLE x 0'-6" LG	CSA G40.21 44W
6	WHEEL	1		8" OD x 2" WIDE x 3/4" ID BUYOUT WHEEL	STEEL



DETAIL- ITEM #3
1. SCALE: 1/8 SIZE

SECTION D
1/8 SIZE



SECTION C
1/8 SIZE

DEVON CANADA
PO: 4500095552
LSD: 6-17-64-08 W4M
FSR JOB: 181048
FIRE TUBE RUPTURE LEAK -
REPAIR PLAN - PART 2
DIAGRAM#: RPP-2 Rev.1