

Plot Date: Monday, 04 November 2013 3:17:48 PM File Name: X:\CRESCENT POINT\MANSON_16-04-13-28 W1M\MECHANICAL\05_LISTS\CRP-MNS-16-04-LL-006.DWG By: RC

SIZE	CODE	SPEC	NO	INSUL	TRACE	LINE DESCRIPTION			PRESSURE (kPa)		TEMP (°C)		SCH OR WALL THK mm	NON-DESTR TEST	PWHT (NOTE 3)	COATINGS OR PAINT	PRESS PROT. PSV/OPSPD	COMMENTS	REV
						FROM	TO	DRAWING NUMBER	DESIGN	TEST (1)	DESIGN	MDMT							
114	P	A1	130	-	-	114-P-A1-012-38H-ET	V-101	PID-010	1965	2948	38	-29	40	R	YES	P&P IC	PSV		1
114	P	A1	131	-	-	V-101	XV-1011	PID-010	1965	2948	38	-29	40	R	YES	P&P IC	PSV		1
114	P	A1	132	-	-	XV-1011 ON 114-P-A1-131	114-P-A1-016-38H-ET	PID-010	1965	2948	38	-29	40	R	YES	P&P IC	PSV		1
60	P	A1	133	-	-	V-101	PSV-1010	PID-010	1965	2948	38	-29	80	R	YES	P&P IC	PSV		1
89	P	A1	134	-	-	114-P-A1-131	89-P-A1-142	PID-010/011	1965	2948	38	-29	40	R	YES	P&P IC	PSV		1
89	P	A1	135	-	-	89-P-A1-143	114-P-A1-131	PID-011/010	1965	2948	38	-29	40	R	YES	P&P IC	PSV		1
114	P	A1	136	-	-	114-P-A1-013-38H-ET	V-102	PID-009	1965	2948	38	-29	40	R	YES	P&P IC	PSV		1
114	P	A1	137	-	-	V-102	XV-1021	PID-009	1965	2948	38	-29	40	R	YES	P&P IC	PSV		1
114	P	A1	138	-	-	XV-1021 ON 114-P-A1-137	114-P-A1-015-38H-ET	PID-009	1965	2948	38	-29	40	R	YES	P&P IC	PSV		1
60	P	A1	139	-	-	V-102	PSV-1020	PID-009	1965	2948	38	-29	80	R	YES	P&P IC	PSV		1
89	P	A1	140	-	-	114-P-A1-137	89-P-A1-142	PID-009/011	1965	2948	38	-29	40	R	YES	P&P IC	PSV		1
89	P	A1	141	-	-	89-P-A1-143	114-P-A1-137	PID-011/009	1965	2948	38	-29	40	R	YES	P&P IC	PSV		1
89	P	A1	142	-	-	89-P-A1-134 & 89-P-A1-140	89-P-A1-010-25H-ET	PID-011	1965	2948	38	-29	40	R	YES	P&P IC	PSV		1
89	P	A1	143	-	-	89-P-A1-011-25H-ET	89-P-A1-135 & 89-P-A1-141	PID-011	1965	2948	38	-29	40	R	YES	P&P IC	PSV		1
188	PO	A1	150	-	-	188-PO-A1-047	P-204	PID-010	1965	2948	38	-29	40	R	YES	P&P	PSV		1
114	PO	A1	151	-	-	P-204	114-P-A1-131	PID-010	1965	2948	38	-29	40	R	YES	P&P	PSV		1
168	PO	A1	152	-	-	114-P-A1-131	188-PO-A1-050	PID-010	1965	2948	38	-29	40	R	YES	P&P IC	PSV	SEE ISO 168-PO-A1-150 FOR INTERNAL COATING LIMITS	1
114	PO	A1	153	-	-	XV-1011 ON 114-P-A1-131	114-PO-A1-051	PID-010	1965	2948	38	-29	40	R	YES	P&P	PSV		1
168	PO	A1	154	-	-	188-PO-A1-048	P-205	PID-009	1965	2948	38	-29	40	R	YES	P&P	PSV		1
114	PO	A1	155	-	-	P-205	114-P-A1-137	PID-009	1965	2948	38	-29	40	R	YES	P&P	PSV		1
168	PO	A1	156	-	-	114-P-A1-137	188-PO-A1-049	PID-009	1965	2948	38	-29	40	R	YES	P&P IC	PSV	SEE ISO 168-PO-A1-156 FOR INTERNAL COATING LIMITS	1
114	PO	A1	157	-	-	XV-1021 ON 114-P-A1-137	114-PO-A1-053	PID-009	1965	2948	38	-29	40	R	YES	P&P	PSV		1
114	PW	A5	160	-	-	XV-1014 ON 114-P-A1-131	114-PW-A5-091-38H-ET	PID-010	1896	2844	38	-29	40	R	CODE	P&P	PSV		0
114	PW	A5	161	-	-	XV-1024 ON 114-P-A1-137	114-PW-A5-092-38H-ET	PID-009	1896	2844	38	-29	40	R	CODE	P&P	PSV		0
48	DR	A1	250	-	-	LEVEL GAUGE DRAIN HEADER	T-824	PID-008/009/010/011	ATM	100	38	-29	160	R	YES	P&P	PSV	BUBBLE TEST, NON CODE	0
48	DR	A1	251	-	-	F-100	48-DR-A1-255	PID-010	ATM	100	38	-29	160	R	YES	P&P	PSV	BUBBLE TEST, NON CODE	0
48	DR	A1	252	-	-	P-204 DRIP PAN	T-825	PID-010/011	ATM	100	38	-29	160	R	YES	P&P	PSV	BUBBLE TEST, NON CODE	0
48	DR	A1	253	-	-	F-110	48-DR-A1-255	PID-009	ATM	100	38	-29	160	R	YES	P&P	PSV	BUBBLE TEST, NON CODE	0
48	DR	A1	254	-	-	P-205 DRIP PAN	T-825	PID-009/011	ATM	100	38	-29	160	R	YES	P&P	PSV	BUBBLE TEST, NON CODE	0
48	DR	A1	255	-	-	STRAINER DRAIN HEADER	T-824	PID-008/009/010/011	ATM	100	38	-29	160	R	YES	P&P	PSV	BUBBLE TEST, NON CODE	0
60	V	A1	451	-	-	PSV-1010	89-V-A1-453	PID-010	ATM	100	38	-29	80	R	YES	P&P	PSV	BUBBLE TEST, NON CODE	0
48	V	A1	452	-	-	60-P-A1-133	89-V-A1-453	PID-010	ATM	100	38	-29	160	R	YES	P&P	PSV	BUBBLE TEST, NON-CODE	0
89	V	A1	453	-	-	HEADER	89-V-A1-421	PID-008/009/010	ATM	100	38	-29	40	R	YES	P&P	PSV	BUBBLE TEST, NON CODE	0
33	V	A1	454	-	-	PSV-1011 & PSV-1012	89-V-A1-453	PID-010	ATM	100	38	-29	160	R	YES	P&P	PSV	BUBBLE TEST, NON CODE	0
60	V	A1	455	-	-	PSV-1020	89-V-A1-453	PID-009	ATM	100	38	-29	80	R	YES	P&P	PSV	BUBBLE TEST, NON CODE	0
48	V	A1	456	-	-	60-P-A1-139	89-V-A1-453	PID-009	ATM	100	38	-29	160	R	YES	P&P	PSV	BUBBLE TEST, NON-CODE	0
33	V	A1	457	-	-	PSV-1021 & PSV-1022	89-V-A1-453	PID-009	ATM	100	38	-29	160	R	YES	P&P	PSV	BUBBLE TEST, NON CODE	0
60	V	A1	458	-	-	T-824	89-V-A1-453	PID-011/008	ATM	100	38	-29	80	R	YES	P&P	PSV	BUBBLE TEST, NON CODE	0
33	IA	A0	550	-	-	60-IA-A0-503	HEADER	PID-008	1035	SERVICE	38	-29	40	PT	-	P&P	PSV	BUBBLE TEST, CATEGORY D FLUID SERVICE	0

INSULATING & TRACING: C Cold Insulation ET Electric Trace
 H Heat Insulation ST Steam Trace
 A Acoustic Insulation GT Glycol Trace
 PP Personnel Insulation OT Hot Oil Trace
 *** Glass Foam Insulation TC Heat Transfer Cement (On Tracing)

TESTING: VE Visual Examination R 100% Radiography of 100%
 MP Magnetic Particle RR Random Radiography (100% of 10%)
 LP Liquid Penetrant SR Spot Radiography
 UE Ultrasonic Examination PT Pneumatic Test
 ** Service Test CAT. "D" Fluid


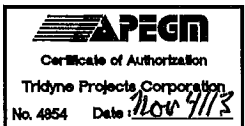

CLEANING: MC Mechanically Clean
 CC Chemically Clean
 SO Steam-out
 CO Dry-out
 DF Detergent Flush

COATING & PAINT: P&P Prime & 2 Coats, Enrich Paint
 IC INTERNALLY COAT WITH DEVCOE 253

NOTE:
 1. HYDROTEST TO 1.5 x FLANGE CLASS 38°C RATING UNLESS WALL THICKNESS LIMITS.
 2. ALL PIPING SYSTEMS DESIGNED TO ASME B31.3 (2012) UNLESS NOTED OTHERWISE.
 3. WELD PROCEDURE AND HARDNESS TESTING CAN BE USED IN LIEU OF STRESS RELIEVING PER CPEC'S SOUR SERVICE SUPPLEMENT.

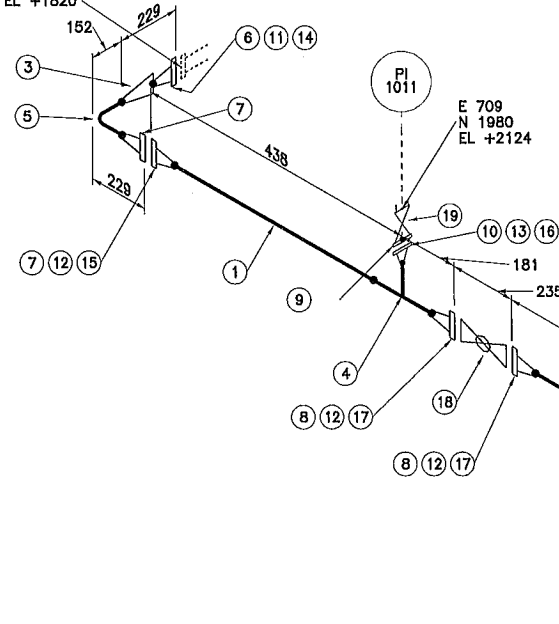
ISSUED FOR CONSTRUCTION

NOV 05 2013

 	<table border="1"> <tr><td>2012126</td><td>0</td><td>ISSUED FOR METER BUILDING CONSTRUCTION</td><td>2013.10.23</td><td>RAC</td></tr> <tr><td>PROJ. No.</td><td>REV.</td><td>REVISION DESCRIPTION</td><td>DATE</td><td>BY</td></tr> </table>	2012126	0	ISSUED FOR METER BUILDING CONSTRUCTION	2013.10.23	RAC	PROJ. No.	REV.	REVISION DESCRIPTION	DATE	BY	<table border="1"> <tr><td>TRIDYNE PROJ. No.: 2012126</td></tr> <tr><td>DATE: 2013.07.18</td></tr> <tr><td>DRAWN BY: R. Clark</td></tr> <tr><td>CHECKED:</td></tr> <tr><td>APPROVED:</td></tr> </table>	TRIDYNE PROJ. No.: 2012126	DATE: 2013.07.18	DRAWN BY: R. Clark	CHECKED:	APPROVED:	 TRIDYNE PROJECTS CORPORATION
2012126	0	ISSUED FOR METER BUILDING CONSTRUCTION	2013.10.23	RAC														
PROJ. No.	REV.	REVISION DESCRIPTION	DATE	BY														
TRIDYNE PROJ. No.: 2012126																		
DATE: 2013.07.18																		
DRAWN BY: R. Clark																		
CHECKED:																		
APPROVED:																		
<table border="1"> <tr><td>REFERENCE DRAWING</td><td>DESCRIPTION</td></tr> </table>	REFERENCE DRAWING	DESCRIPTION	<table border="1"> <tr><td>STAMPS & PERMITS</td></tr> </table>	STAMPS & PERMITS	<table border="1"> <tr><td>MANSON BATTERY</td></tr> <tr><td>LSO:16-04-13-28 W1M</td></tr> <tr><td>MANSON BATTERY TRUCK STATION METER BUILDING LINE LIST</td></tr> </table>	MANSON BATTERY	LSO:16-04-13-28 W1M	MANSON BATTERY TRUCK STATION METER BUILDING LINE LIST	<table border="1"> <tr><td>SCALE (D-SIZE): NONE</td><td>DWG No.: CRP-MNS-16-04-LL-006</td><td>REV. 0</td></tr> </table>	SCALE (D-SIZE): NONE	DWG No.: CRP-MNS-16-04-LL-006	REV. 0						
REFERENCE DRAWING	DESCRIPTION																	
STAMPS & PERMITS																		
MANSON BATTERY																		
LSO:16-04-13-28 W1M																		
MANSON BATTERY TRUCK STATION METER BUILDING LINE LIST																		
SCALE (D-SIZE): NONE	DWG No.: CRP-MNS-16-04-LL-006	REV. 0																



CONN. TO
V-101
N5
E 1094
N 2650
EL +1820



INTERNALLY COAT WITH DEVOE 253

8
E 6500
N 600
EL +1820

5791

5591

ISSUED FOR
CONSTRUCTION
NOV 05 2013

NOTES:
1. FOR PIPING DESIGN DATA SEE LINE LIST
2. ALL COORDINATES AND ELEVATIONS ARE FROM SKID DATUM.

BILL OF MATERIAL			
NO.	QTY	SIZE	DESCRIPTION
PIPE			
1	257 MM	4	PIPE SMLS SCH 40 A106 B
2	6298 MM	4	PIPE SMLS, SCH. 40, A106 B
FITTINGS			
3	1	6X4	RED CONC BW SCH 40 x 40 A234 WPB-S
4	1	4X2	TEE RED BW SCH 40 x 80 A234 WPB-S
5	2	4	ELL 90° LR BW SCH 40 A234 WPB-S
FLANGES			
6	1	6	FLG. RFWN, CL150, SCH. 40, A105N
7	2	4	FLG RFWN CL150 SCH 40 A105N
8	3	4	FLG. RFWN, CL150, SCH. 40, A105N
9	1	2X3/4	FLG RF RED TRD CL150 A105N
10	1	2	FLG RFWN CL150 SCH 80 A105N
GASKETS			
11	1	6	GASKET, 1/8" THK, CL150 RF, DURLON 8500
12	3	4	GASKET, 1/8" THK, CL150 RF, DURLON 8500
13	1	2	GASKET, 1/8" THK, CL150 RF, DURLON 8500
BOLTS			
14	1	3/4	(8) - STUD BOLTS c/w 2 NUTS, A193 B7M /A194 2HM (102 MM LG)
15	1	5/8	(8) - STUD BOLTS c/w 2 NUTS A193 B7M/A194 2HM (89 MM LG)
16	1	5/8	(4) - STUD BOLTS c/w 2 NUTS A193 B7M/A194 2HM (83 MM LG)
17	2	5/8	(8) - STUD BOLTS c/w 2 NUTS, A193 B7M /A194 2HM (89 MM LG)
VALVES			
18	1	4	BALL VALVE CL150 RF FULL PORT A216 WCB NACE
19	1	3/4X1/2	NEEDLE VALVE 6000WOG MNPTxFNPT A182 F316/316L NACE NE-801F1

Plot Date: Thursday, 31 October 2013 10:25:12 AM File Name: X:\CRESCENT POINT\MANSON 16-04-13-28 W1M\MECHANICAL\04 ISO\114-P-A1-130 SHT-1.DWG By: RC

TRIDYNE PROJ. No.: 2012126	DATE: 2013.10.30	DRAWN BY: RAC	CHECKED: RAC	APPROVED: RAC		
2012126	0	ISSUED FOR CONSTRUCTION	2013.10.31	RAC	PM	
PROJ. No.	REV.	REVISION DESCRIPTION	DATE	BY	CHK'D	APP'D



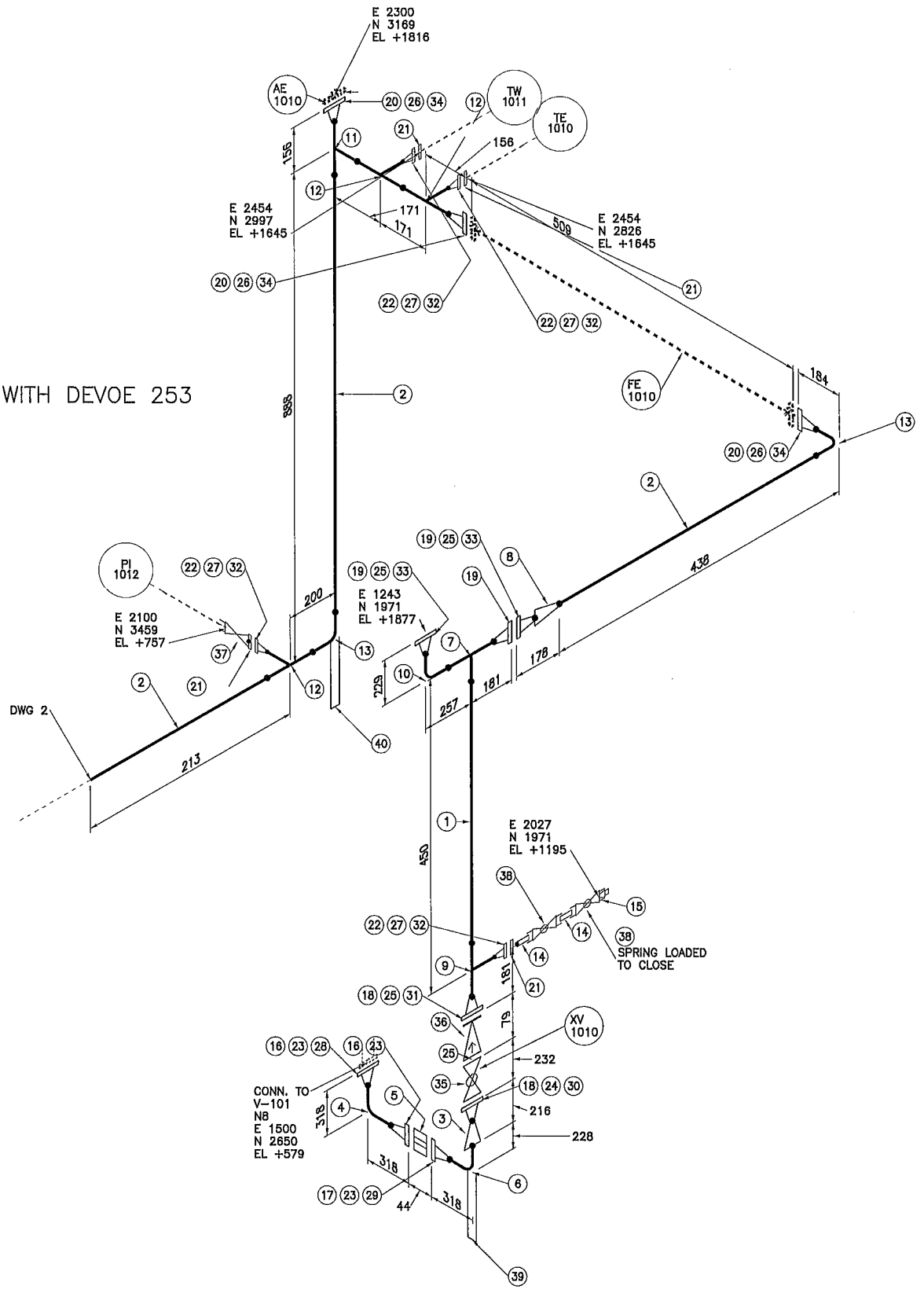
SPEC	A1
MANSON	
LSD: 16-04-13-28 W1M	
PIPING ISOMETRIC	
OIL BATTERY	
SCALE (D-SIZE): NONE	DWG No.: 114-P-A1-130
SHT. 1 OF 1	REV. 0



Plot Date: Monday, 04 November 2013 3:19:17 PM File Name: X:\CRESCENT POINT\MANSON 16-04-13-28 W1M\MECHANICAL\04 ISO\114-P-A1-131 SHT-1.DWG By: RC

INTERNALLY COAT WITH DEVOE 253

CONT. ON
114-P-A1-131 DWG 2
E 1888
N 3169
EL +757

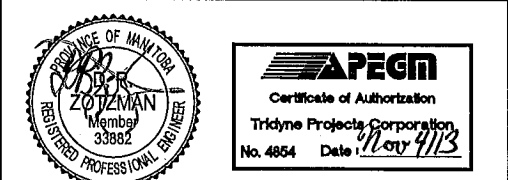


NOTES:
1. FOR PIPING DESIGN DATA SEE LINE LIST
2. ALL COORDINATES AND ELEVATIONS ARE FROM SKID DATUM.

ISSUED FOR
CONSTRUCTION
NOV 05 2013

BILL OF MATERIAL			
NO.	QTY	SIZE	DESCRIPTION
PIPE			
1	240 MM	4	PIPE SMLS SCH 40 A106 B
2	1138 MM	3	PIPE SMLS SCH 40 A106 B
FITTINGS			
3	1	6X4	RED CONC BW SCH 40 x 40 A234 WPB-S
4	1	6	ELL 90° LR BW SCH 40 A234 WPB-S
5	1	6	BLEED RING 38mm THK CL150 RF c/w 3/4" NPT TAP A516-70N
6	1	6	ELL 90° LR BW, SCH. 40, A234 GR WPB-S
7	1	4X4	TEE STR BW SCH 40 A234 WPB-S
8	1	4X3	RED CONC BW SCH 40 x 40 A234 WPB-S
9	1	4X2	TEE RED BW SCH 40 x 80 A234 WPB-S
10	1	4	ELL 90° LR BW SCH 40 A234 WPB-S
11	1	3X3	TEE STR BW SCH 40 A234 WPB-S
12	3	3X2	TEE RED BW SCH 40 x 80 A234 WPB-S
13	2	3	ELL 90° LR BW SCH 40 A234 WPB-S
14	2	3/4	NIPPLE SMLS SCH 160 A312 TP-316 TBE (100 MM LG)
15	1	3/4	PLUG EXTRA LONG HEX HEAD TRD A182 F316/316L
FLANGES			
16	2	6	FLG RFWN CL150 SCH 40 A105N
17	1	6	FLG RFWN, CL150, SCH. 40, A105N
18	2	4	FLG RFWN, CL150, SCH. 40, A105N
19	3	4	FLG RFWN CL150 SCH 40 A105N
20	3	3	FLG RFWN CL150 SCH 40 A105N
21	4	2X3/4	FLG RF RED TRD CL150 A182 F316
22	4	2	FLG RFWN CL150 SCH 80 A105N
GASKETS			
23	3	6	GASKET, 1/8" THK, CL150 RF, DURLON 8500
24	1	4	GASKET, 1/8" THK, CL150 RF, SWND 316 SS, NON-ASBESTOS
25	4	4	GASKET, 1/8" THK, CL150 RF, DURLON 8500
26	3	3	GASKET, 1/8" THK, CL150 RF, DURLON 8500
27	4	2	GASKET, 1/8" THK, CL150 RF, DURLON 8500
BOLTS			
28	1	3/4	(8) - STUD BOLTS c/w 2 NUTS A193 B7M/A194 2HM (102 MM LG)
29	1	3/4	(8) - STUD BOLTS c/w 2 NUTS, A193 B7M /A194 2HM (140 MM LG)
30	1	5/8	(8) - STUD BOLTS c/w 2 NUTS, A193 B7M /A194 2HM (89 MM LG)
31	1	5/8	(8) - STUD BOLTS c/w 2 NUTS, A193 B7M /A194 2HM (185 MM LG)
32	4	5/8	(4) - STUD BOLTS c/w 2 NUTS A193 B7M/A194 2HM (83 MM LG)
33	2	5/8	(8) - STUD BOLTS c/w 2 NUTS A193 B7M/A194 2HM (89 MM LG)
34	3	5/8	(4) - STUD BOLTS c/w 2 NUTS A193 B7M/A194 2HM (89 MM LG)
VALVES			
35	1	4	BALL VALVE CL150 RF FULL PORT A216 WCB NACE
36	1	4	CHECK VALVE SWING CL150 RF A216 WCB NACE
37	1	3/4X1/2	NEEDLE VALVE 6000WOG MNPTxFNPT A182 F316/316L NACE NE-601F1
38	2	3/4	BALL VALVE 2000 WOG TRD A105N RP NACE BA-200C1
SUPPORTS			
39	1	6	DUMMY SUPPORT DS4 L=238
40	1	3	DUMMY SUPPORT DS4 L=737

REFERENCE DRAWING	DESCRIPTION



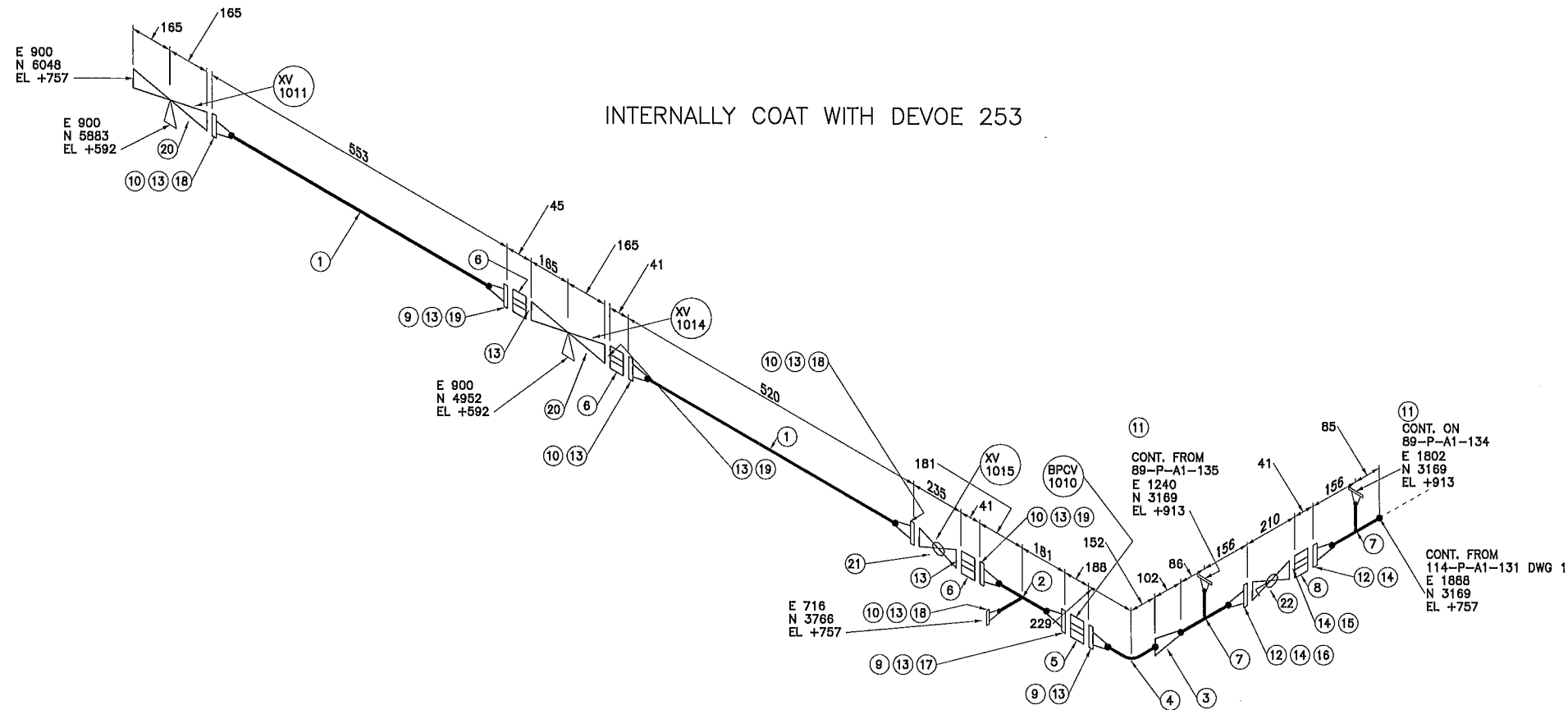
PROJ. No.	REV.	ISSUED FOR CONSTRUCTION	REVISION DESCRIPTION	DATE	BY	CHK'D	APP'D
2012126	0	ISSUED FOR CONSTRUCTION		2013.10.31	RAC		

TRIDYNE PROJ. No.: 2012126
 DATE: 2013.10.30
 DRAWN BY: RAC
 CHECKED:
 APPROVED:

Crescent Point ENERGY CORP

TRIDYNE PROJECTS CORPORATION

SPEC	A1
MANSON	
LSD: 16-04-13-28 W1M	
PIPING ISOMETRIC	
OIL BATTERY	
SCALE (D-SIZE): NONE	DWG No.: 114-P-A1-131
SHT. 1 OF 2	REV. 0



ISSUED FOR CONSTRUCTION
NOV 05 2013

NOTES:
1. FOR PIPING DESIGN DATA SEE LINE LIST
2. ALL COORDINATES AND ELEVATIONS ARE FROM SKID DATUM.

BILL OF MATERIAL			
NO.	QTY	SIZE	DESCRIPTION
PIPE			
1	767 MM	4	PIPE SMLS SCH 40 A106 B
FITTINGS			
2	1	4X4	TEE STR BW SCH 40 A234 WPB-S
3	1	4X3	RED CONG BW SCH 40 x 40 A234 WPB-S
4	1	4	ELL 90° LR BW SCH 40 A234 WPB-S
5	1	4	CONTROL VALVE CL150 RF
6	3	4	BLEED RING 38mm THK CL150 RF c/w 3/4" NPT TAP A516-70N
7	2	3X3	TEE STR BW SCH 40 A234 WPB-S
8	1	3	BLEED RING 38mm THK CL150 RF c/w 3/4" NPT TAP A516-70N
FLANGES			
9	3	4	FLG. RFWN, CL150, SCH. 40, A105N
10	5	4	FLG. RFWN CL150 SCH 40 A105N
11	2	3	FLG. RFWN, CL150, SCH. 40, A105N
12	2	3	FLG. RFWN CL150 SCH 40 A105N
GASKETS			
13	11	4	GASKET, 1/8" THK, CL150 RF, DURLON 8500
14	3	3	GASKET, 1/8" THK, CL150 RF, DURLON 8500
BOLTS			
15	1	5/8	(4) - STUD BOLTS c/w 2 NUTS A193 B7M/A194 2HM (133 MM LG)
16	1	5/8	(4) - STUD BOLTS c/w 2 NUTS A193 B7M/A194 2HM (89 MM LG)
17	1	5/8	(8) - STUD BOLTS c/w 2 NUTS, A193 B7M /A194 2HM (273 MM LG)
18	3	5/8	(8) - STUD BOLTS c/w 2 NUTS A193 B7M/A194 2HM (89 MM LG)
19	3	5/8	(8) - STUD BOLTS c/w 2 NUTS A193 B7M/A194 2HM (133 MM LG)
VALVES			
20	2	4X4	3-WAY VALVE CL150 RF
21	1	4	BALL VALVE CL150 RF A216 WCB RP NACE
22	1	3	BALL VALVE CL150 RF A216 WCB RP NACE, DB&B

REFERENCE DRAWING	DESCRIPTION

ZDZMAN
REGISTERED PROFESSIONAL ENGINEER

APENM
Certificate of Authorization
Tridyne Projects Corporation
No. 4854 Date *Nov 4/13*

2012126	0	ISSUED FOR CONSTRUCTION	2013.10.31	RAC			
PROJ. No.	REV.	REVISION DESCRIPTION	DATE	BY	CHK'D	APP'D	

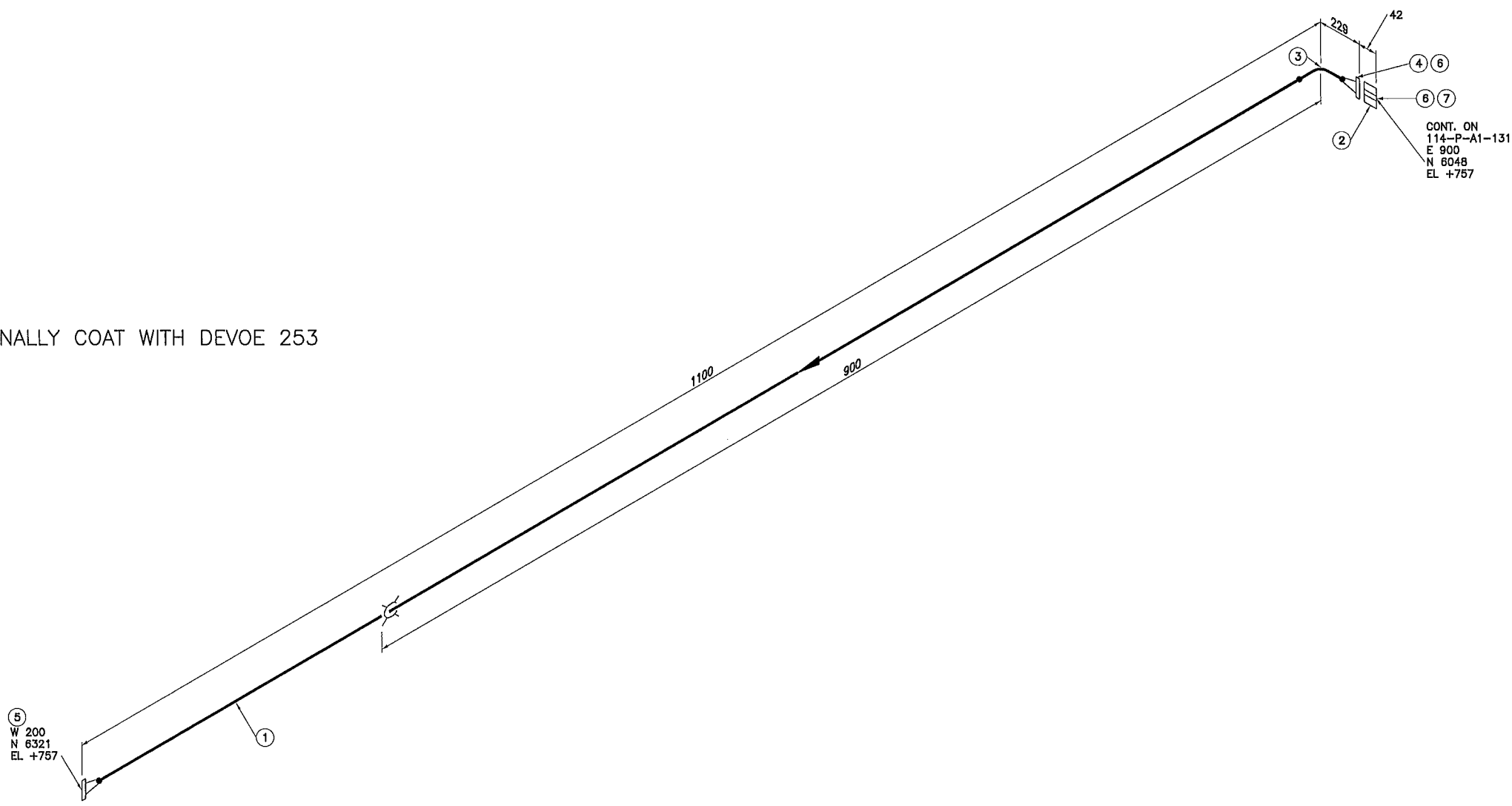
TRIDYNE PROJ. No.: 2012126
DATE: 2013.10.30
DRAWN BY: RAC
CHECKED: [Blank]
APPROVED: [Blank]

TRIDYNE PROJECTS CORPORATION

SPEC	A1
MANSON	
LSD: 16-04-13-28 W1M	
PIPING ISOMETRIC	
OIL BATTERY	
SCALE (D-SIZE): NONE	DWG No.: 114-P-A1-131
SHT. 2 OF 2	REV. 0



INTERNALLY COAT WITH DEVOE 253



BILL OF MATERIAL			
NO.	QTY	SIZE	DESCRIPTION
PIPE			
1	872 MM	4	PIPE SMLS, SCH. 40, A106 B
FITTINGS			
2	1	4	BLEED RING 38mm THK CL150 RF c/w 3/4" NPT TAP A516-70N
3	1	4	ELL 90° LR BW SCH 40 A234 WPB-S
FLANGES			
4	1	4	FLG RFWN CL150 SCH 40 A105N
5	1	4	FLG. RFWN, CL150, SCH. 40, A105N
GASKETS			
6	2	4	GASKET, 1/8" THK, CL150 RF DURLON 8500
BOLTS			
7	1	5/8	(8) - STUD BOLTS c/w 2 NUTS A193 B7M/A194 2HM (133 MM LG)

ISSUED FOR CONSTRUCTION
NOV 05 2013

NOTES:
1. FOR PIPING DESIGN DATA SEE LINE LIST
2. ALL COORDINATES AND ELEVATIONS ARE FROM SKID DATUM.

Plot Date: Thursday, 31 October 2013 11:03:10 AM File Name: X:\CRESCENT POINT\MANSON 16-04-13-28 W1M\MECHANICAL\04 ISO\14-P-A1-132 SHT-1.DWG By: RC

REFERENCE DRAWING	DESCRIPTION



STAMPS & PERMITS

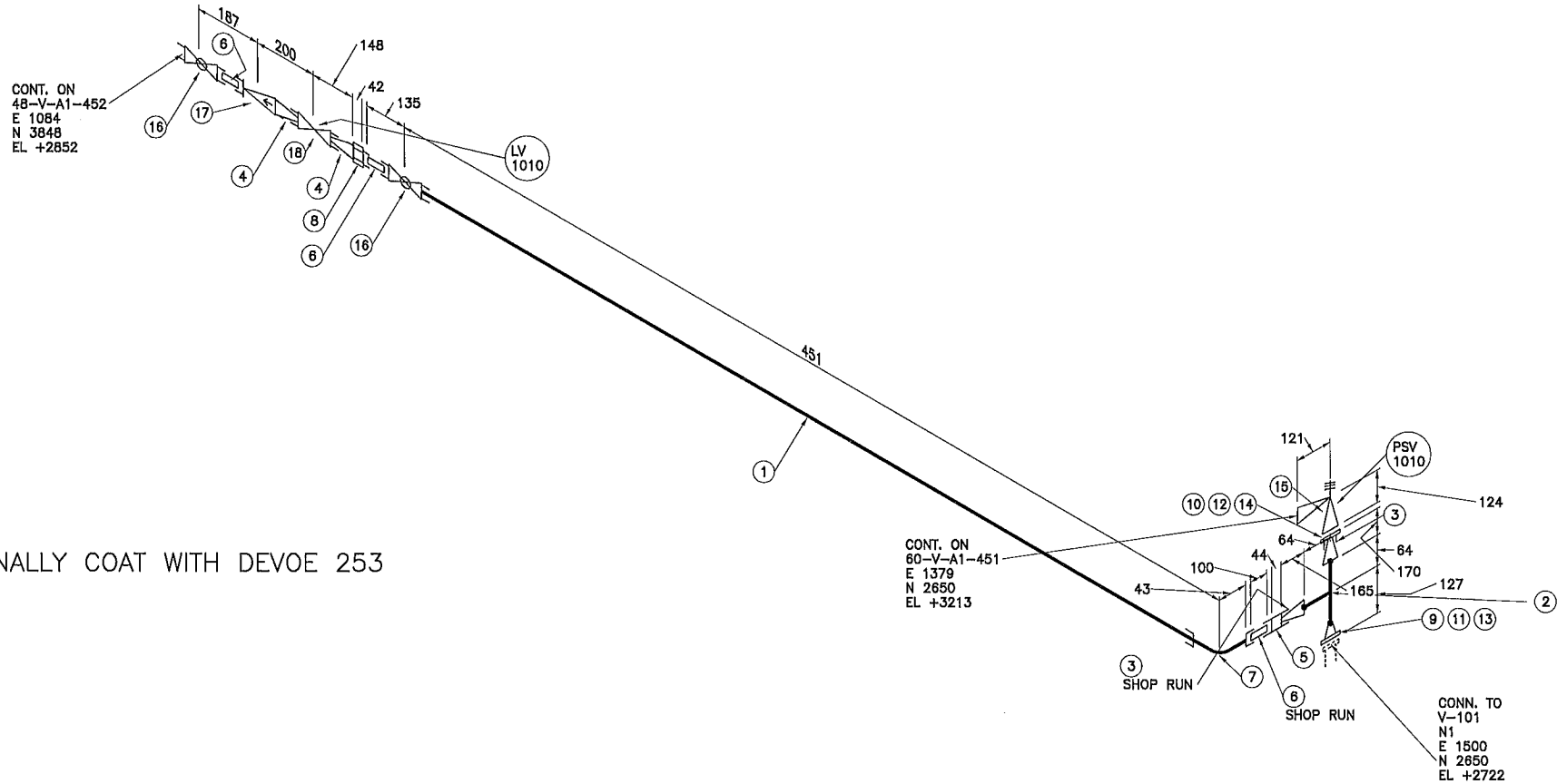
PROJ. No.	REV.	ISSUED FOR CONSTRUCTION	DATE	BY	CHK'D	APP'D
2012126	0	ISSUED FOR CONSTRUCTION	2013.10.31	RAC	PM	

TRIDYNE PROJ. No.: 2012126
DATE: 2013.10.30
DRAWN BY: RAC
CHECKED: PM
APPROVED:

Crescent Point ENERGY CORP

TRIDYNE PROJECTS CORPORATION

SPEC	A1
MANSON	
LSD: 16-04-13-28 W1M	
PIPING ISOMETRIC	
OIL BATTERY	
SCALE (D-SIZE): NONE	DWG No.: 114-P-A1-132
SHT. 1 of 1	REV. 0



INTERNALLY COAT WITH DEVOE 253

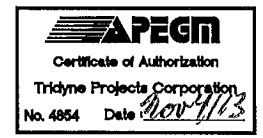
BILL OF MATERIAL			
NO.	QTY	SIZE	DESCRIPTION
PIPE			
1	373	MM	1 1/2 PIPE SMLS, SCH. 80, A106 B TBE
FITTINGS			
2	1	2X2	TEE STR BW, SCH. 80, A234 GR WPB-S
3	2	2X1 1/2	SWG. CONC. SCH. 80 x 80, A234 GR WPB-S BLE-TSE
4	2	1 1/2X1	SWG. CONC. SCH. 80, A234 GR WPB-S TBE
5	1	1 1/2	CPLG FULL, CL3000 THRD, A105N
6	3	1 1/2	NIPPLE SMLS, SCH. 80, A106 B TBE (100 MM LG)
7	1	1 1/2	ELL. 90°, CL3000 THRD, A105N
8	1	1 1/2	UNION, CL3000 THRD, A105N
FLANGES			
9	1	2	FLG. RFWN, CL150, SCH. 80, A105N
10	1	1 1/2	FLG. RF THRD, CL150, A105N
GASKETS			
11	1	2	GASKET, 1/8" THK, CL150 RF, DURLON 8500
12	1	1 1/2	GASKET, 1/8" THK, CL150 RF, DURLON 8500
BOLTS			
13	1	5/8	(4) - STUD BOLTS c/w 2 NUTS, A193 B7M /A194 2HM (83 MM LG)
14	1	1/2	(4) - STUD BOLTS c/w 2 NUTS, A193 B7M /A194 2HM (89 MM LG)
VALVES			
15	1	2X1 1/2	RELIEF VALVE CL150 x CL150 RF
16	2	1 1/2	BALL VALVE, 800# THRD, A105, NACE TRIM
17	1	1 1/2	CHECK VALVE BALL RP 800 API THRD A105N NACE
18	1	1	CONTROL VALVE LV-1010

ISSUED FOR CONSTRUCTION
NOV 05 2013

NOTES:
1. FOR PIPING DESIGN DATA SEE LINE LIST
2. ALL COORDINATES AND ELEVATIONS ARE FROM SKID DATUM.

Plot Date: Thursday, 31 October 2013 11:04:00 AM File Name: X:\CRESCENT POINT\MANSON 16-04-13-28 W1M\MECHANICAL\04 ISO\60-P-A1-133 SHI-1.DWG By: RC

REFERENCE DRAWING	DESCRIPTION



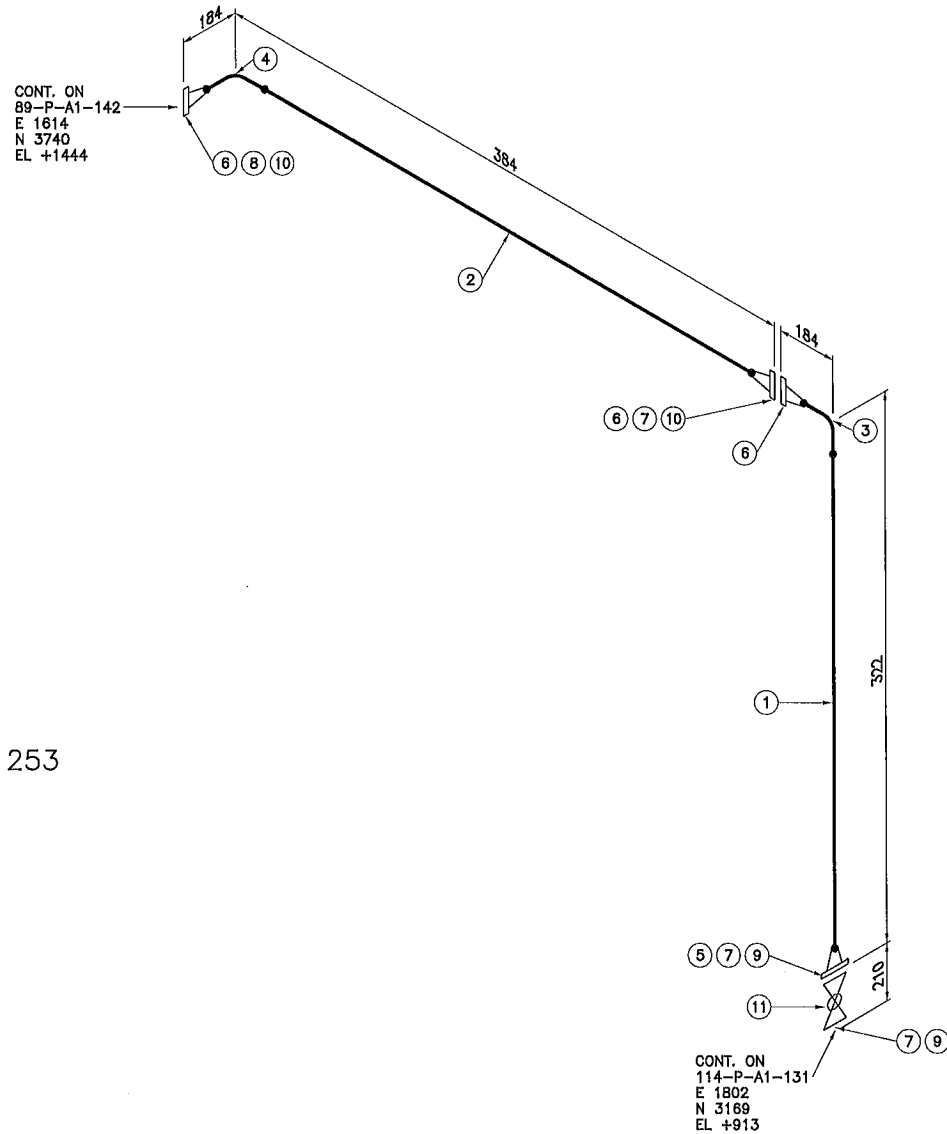
PROJ. No.	REV.	REVISION DESCRIPTION	DATE	BY	CHK'D	APP'D
2012126	0	ISSUED FOR CONSTRUCTION	2013.10.31	RAC	PM	

TRIDYNE PROJ. No.: 2012126
DATE: 2013.10.30
DRAWN BY: RAC
CHECKED: PM
APPROVED: PM

Crescent Point ENERGY CORP.

TRIDYNE PROJECTS CORPORATION

SPEC	A1
MANSON	
LSD: 16-04-13-28 W1M	
PIPING ISOMETRIC	
OIL BATTERY	
SCALE (D-SIZE): NONE	DWG No.: 60-P-A1-133
SHT. 1 of 1	REV. 0



INTERNALLY COAT WITH DEVOE 253

ISSUED FOR
CONSTRUCTION
NOV 05 2013

NOTES:
1. FOR PIPING DESIGN DATA SEE LINE LIST
2. ALL COORDINATES AND ELEVATIONS ARE FROM SKID DATUM.

BILL OF MATERIAL			
NO.	QTY	SIZE	DESCRIPTION
PIPE			
1	3	137 MM	PIPE SMLS, SCH. 40, A106 B
2	3	200 MM	PIPE SMLS SCH 40 A106 B
FITTINGS			
3	1	3	ELL. 90° LR BW, SCH. 40, A234 GR WPB-S
4	1	3	ELL 90° LR BW SCH 40 A234 WPB-S
FLANGES			
5	1	3	FLG. RFWN, CL150, SCH. 40, A105N
6	3	3	FLG RFWN CL150 SCH 40 A105N
GASKETS			
7	3	3	GASKET, 1/8" THK, CL150 RF, DURLON 8500
8	1	3	GASKET 1/8" THK CL150 RF SWND 316 SS NON-ASBESTOS FILLER OUTER CENTERING & INNER RING
BOLTS			
9	2	5/8	(4) - STUD BOLTS c/w 2 NUTS, A193 B7M /A194 2HM (89 MM LG)
10	2	5/8	(4) - STUD BOLTS c/w 2 NUTS A193 B7M/A194 2HM (89 MM LG)
VALVES			
11	1	3	BALL VALVE CL150 RF FULL PORT DBB A216 WCB NACE

Plot Date: Thursday, 31 October 2013 11:05:04 AM File Name: X:\CRESCENT POINT\MANSON 16-04-13-28 W1M\MECHANICAL\04 ISO\89-P-A1-134-SHT-1.DWG By: RC

REF. NO.	REV.	DESCRIPTION	DATE	BY	CHK'D	APP'D
2012126	0	ISSUED FOR CONSTRUCTION	2013.10.31	RAC	PM	



TRIDYNE PROJ. No.: 2012126
DATE: 2013.10.30
DRAWN BY: RAC
CHECKED: PM
APPROVED:

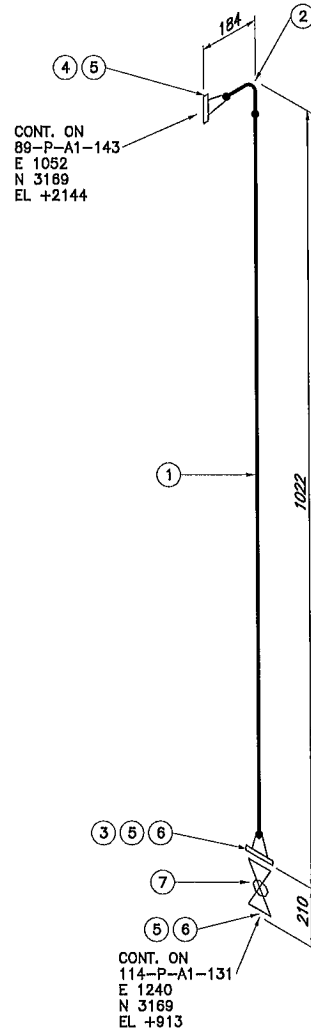

Crescent Point
 ENERGY CORP
TRIDYNE PROJECTS
 CORPORATION

SPEC	A1
MANSON	
LSD: 16-04-13-28 W1M	
PIPING ISOMETRIC	
OIL BATTERY	
SCALE (D-SIZE): NONE	DWG No.: 89-P-A1-134
SHT. 1 of 1	REV. 0



Plot Date: Thursday, 31 October 2013 11:05:42 AM File Name: X:\CRESCENT POINT\MANSON 16-04-13-28 W1M\MECHANICAL\04 ISO\89-P-A1-135 SH1-1.DWG By: RC

INTERNALLY COAT WITH DEVOE 253



BILL OF MATERIAL

NO.	QTY	SIZE	DESCRIPTION
PIPE			
1	837 MM	3	PIPE SMLS, SCH. 40, A106 B
FITTINGS			
2	1	3	ELL. 90° LR BW, SCH. 40, A234 GR WPB-S
FLANGES			
3	1	3	FLG. RFWN, CL150, SCH. 40, A105N
4	1	3	FLG RFWN CL150 SCH 40 A105N
GASKETS			
5	3	3	GASKET, 1/8" THK, CL150 RF, DURLON 8500
BOLTS			
6	2	5/8	(4) - STUD BOLTS c/w 2 NUTS, A193 B7M /A194 2HM (89 MM LG)
VALVES			
7	1	3	BALL VALVE CL150 RF FULL PORT DBB A216 WCB NACE

ISSUED FOR CONSTRUCTION
NOV 05 2013

NOTES:
1. FOR PIPING DESIGN DATA SEE LINE LIST
2. ALL COORDINATES AND ELEVATIONS ARE FROM SKID DATUM.

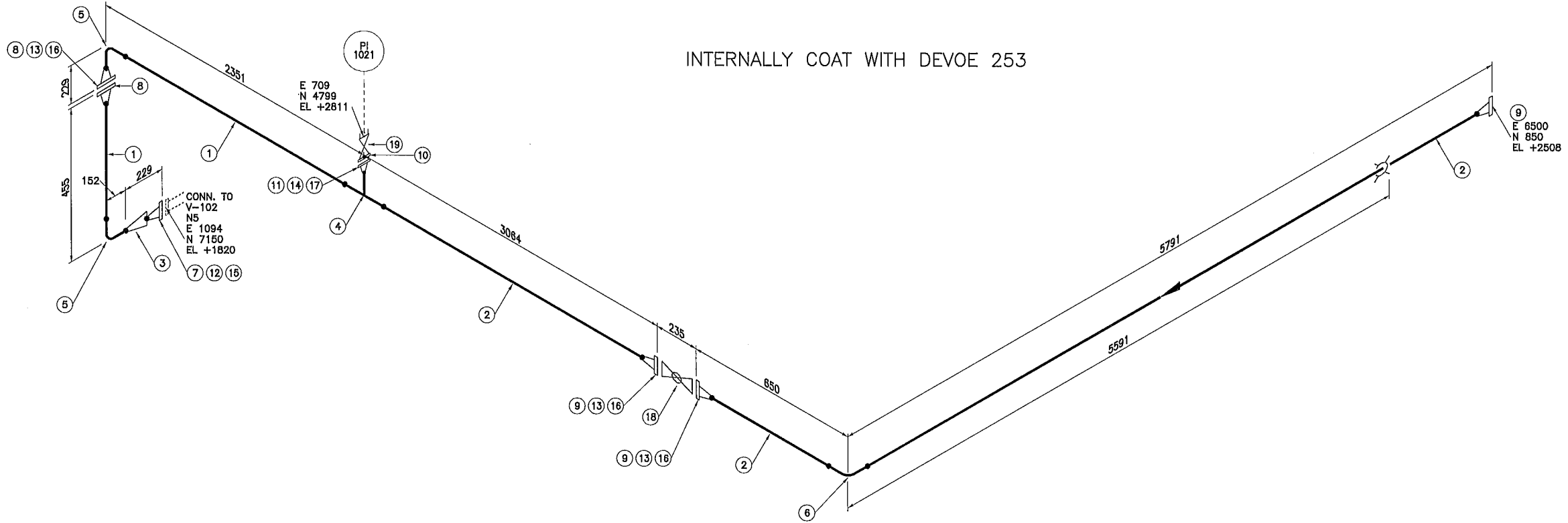
REFERENCE DRAWING	DESCRIPTION	STAMPS & PERMITS	PROJ. No.	REV.	REVISION DESCRIPTION	DATE	BY	CHK'D	APP'D
			2012126	0	ISSUED FOR CONSTRUCTION	2013.10.31	RAC	PM	

TRIDYNE PROJ. No.: 2012126
DATE: 2013.10.30
DRAWN BY: RAC
CHECKED: PM
APPROVED:

Crescent Point ENERGY CORP

TRIDYNE PROJECTS CORPORATION

SPEC	A1
MANSON	
LSD: 16-04-13-28 W1M	
PIPING ISOMETRIC	
OIL BATTERY	
SCALE (0-SIZE): NONE	DWG No.: 89-P-A1-135
SHT. 1 of 1	REV. 0



INTERNALLY COAT WITH DEVOE 253

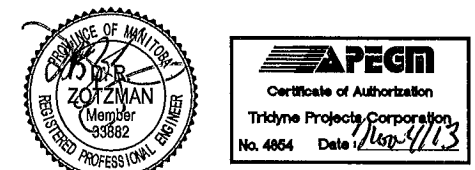
BILL OF MATERIAL			
NO.	QTY	SIZE	DESCRIPTION
PIPE			
1	2321 MM	4	PIPE SMLS SCH 40 A106 B
2	8867 MM	4	PIPE SMLS, SCH. 40, A106 B
FITTINGS			
3	1	6X4	RED. CONC BW, SCH. 40 x 40, A234 GR WPB-S
4	1	4X2	TEE RED BW SCH 40 x 80 A234 WPB-S
5	2	4	ELL 90° LR BW SCH 40 A234 WPB-S
6	1	4	ELL 90° LR BW, SCH. 40, A234 GR WPB-S
FLANGES			
7	1	6	FLG. RFWN, CL150, SCH. 40, A105N
8	2	4	FLG RFWN CL150 SCH 40 A105N
9	3	4	FLG. RFWN, CL150, SCH. 40, A105N
10	1	2X3/4	FLG RF RED TRD CL150 A105N
11	1	2	FLG RFWN CL150 SCH 80 A105N
GASKETS			
12	1	6	GASKET, 1/8" THK, CL150 RF, DURLON 8500
13	3	4	GASKET, 1/8" THK, CL150 RF, DURLON 8500
14	1	2	GASKET, 1/8" THK, CL150 RF, DURLON 8500
BOLTS			
15	1	3/4	(8) - STUD BOLTS c/w 2 NUTS A193 B7M/A194 2HM (102 MM LG)
16	3	5/8	(8) - STUD BOLTS c/w 2 NUTS A193 B7M/A194 2HM (89 MM LG)
17	1	5/8	(4) - STUD BOLTS c/w 2 NUTS A193 B7M/A194 2HM (83 MM LG)
VALVES			
18	1	4	BALL VALVE CL150 RF FULL PORT A216 WCB NACE
19	1	3/4X1/2	NEEDLE VALVE 6000WOG MNPTXFNPT A182 F316/316L NACE NE-601F1

ISSUED FOR CONSTRUCTION
NOV 05 2013

NOTES:
1. FOR PIPING DESIGN DATA SEE LINE LIST
2. ALL COORDINATES AND ELEVATIONS ARE FROM SKID DATUM.

Plot Date: Monday, 04 November 2013 3:19:10 PM File Name: X:\CRESCENT POINT\MANSON 16-04-13-28 W1M\MECHANICAL\04 ISO\114-P-A1-136 SHT-1.DWG By: RC

PROJ. No.	REV.	REVISION DESCRIPTION	DATE	BY	CHK'D	APP'D
2012126	0	ISSUED FOR CONSTRUCTION	2013.10.31	RAC		



TRIDYNE PROJ. No.: 2012126
DATE: 2013.10.30
DRAWN BY: RAC
CHECKED:
APPROVED:

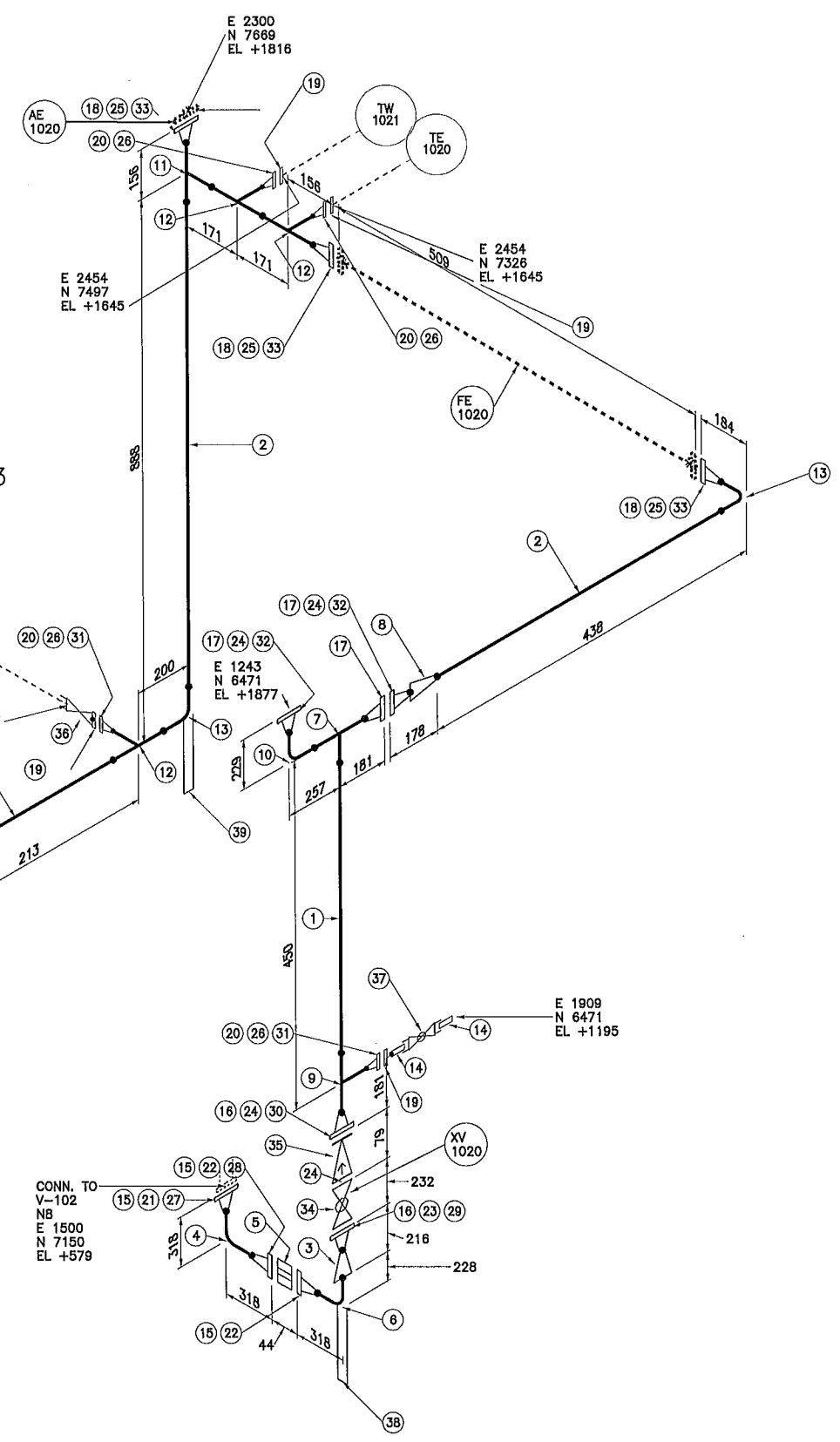
TRIDYNE PROJECTS
CORPORATION

SPEC	A1
MANSON	
LSD: 16-04-13-28 W1M	
PIPING ISOMETRIC	
OIL BATTERY	
SCALE (D-SIZE): NONE	DWG No.: 114-P-A1-136
SHT. 1 of 1	REV. 0



INTERNALLY COAT WITH DEVOE 253

CONT. ON
114-P-A1-137 DWG 2
E 1888
N 7689
EL +757



BILL OF MATERIAL			
NO.	QTY	SIZE	DESCRIPTION
PIPE			
1	240 MM	4	PIPE SMLS SCH 40 A106 B
2	1138 MM	3	PIPE SMLS SCH 40 A106 B
FITTINGS			
3	1	6X4	RED CONC BW SCH 40 x 40 A234 WPB-S
4	1	6	ELL 90° LR BW SCH 40 A234 WPB-S
5	1	6	BLEED RING 38mm THK CL150 RF c/w 3/4" NPT TAP A516 GR 70N
6	1	6	ELL 90° LR BW, SCH. 40, A234 GR WPB-S
7	1	4X4	TEE STR BW SCH 40 A234 WPB-S
8	1	4X3	RED CONC BW SCH 40 x 40 A234 WPB-S
9	1	4X2	TEE RED BW SCH 40 x 80 A234 WPB-S
10	1	4	ELL 90° LR BW SCH 40 A234 WPB-S
11	1	3X3	TEE STR BW SCH 40 A234 WPB-S
12	3	3X2	TEE RED BW SCH 40 x 80 A234 WPB-S
13	2	3	ELL 90° LR BW SCH 40 A234 WPB-S
14	2	3/4	NIPPLE SMLS SCH 160 A312 TP-316 TBE (100 MM LG)
FLANGES			
15	3	6	FLG RFWN CL150 SCH 40 A105N
16	2	4	FLG. RFWN, CL150, SCH. 40, A105N
17	3	4	FLG RFWN CL150 SCH 40 A105N
18	3	3	FLG RFWN CL150 SCH 40 A105N
19	4	2X3/4	FLG RF RED TRD CL150 A182 F316
20	4	2	FLG RFWN CL150 SCH 80 A105N
GASKETS			
21	1	6	GASKET, 1/8" THK, CL150 RF, DURLON 8500
22	2	6	GASKET 1/8" THK CL150 RF SWND 316 SS NON-ASBESTOS FILLER OUTER CENTERING & INNER RING
23	1	4	GASKET, 1/8" THK, CL150 RF, SWND 316 SS, NON-ASBESTOS
24	4	4	GASKET, 1/8" THK, CL150 RF, DURLON 8500
25	3	3	GASKET, 1/8" THK, CL150 RF, DURLON 8500
26	4	2	GASKET, 1/8" THK, CL150 RF, DURLON 8500
BOLTS			
27	1	3/4	(8) - STUD BOLTS c/w 2 NUTS A193 B7M/A194 2HM (102 MM LG)
28	1	3/4	(8) - STUD BOLTS c/w 2 NUTS A193 B7M/A194 2HM (140 MM LG)
29	1	5/8	(8) - STUD BOLTS c/w 2 NUTS, A193 B7M /A194 2HM (89 MM LG)
30	1	5/8	(8) - STUD BOLTS c/w 2 NUTS, A193 B7M /A194 2HM (165 MM LG)
31	2	5/8	(4) - STUD BOLTS c/w 2 NUTS A193 B7M/A194 2HM (83 MM LG)
32	2	5/8	(8) - STUD BOLTS c/w 2 NUTS A193 B7M/A194 2HM (89 MM LG)
33	3	5/8	(4) - STUD BOLTS c/w 2 NUTS A193 B7M/A194 2HM (89 MM LG)
VALVES			
34	1	4	BALL VALVE CL150 RF FULL PORT A216 WCB NACE
35	1	4	CHECK VALVE SWING CL150 RF A216 WCB NACE
36	1	3/4X1/2	NEEDLE VALVE 6000WOG MNPTxFNPT A182 F316/316L NACE NE-601F1
37	1	3/4	BALL VALVE 2000 WOG TRD A351 CF8M RP NACE
SUPPORTS			
38	1	6	DUMMY SUPPORT DS4 L=238
39	1	3	DUMMY SUPPORT DS4 L=737

ISSUED FOR
CONSTRUCTION
NOV 05 2013

NOTES:
1. FOR PIPING DESIGN DATA SEE LINE LIST
2. ALL COORDINATES AND ELEVATIONS ARE FROM SKID DATUM.

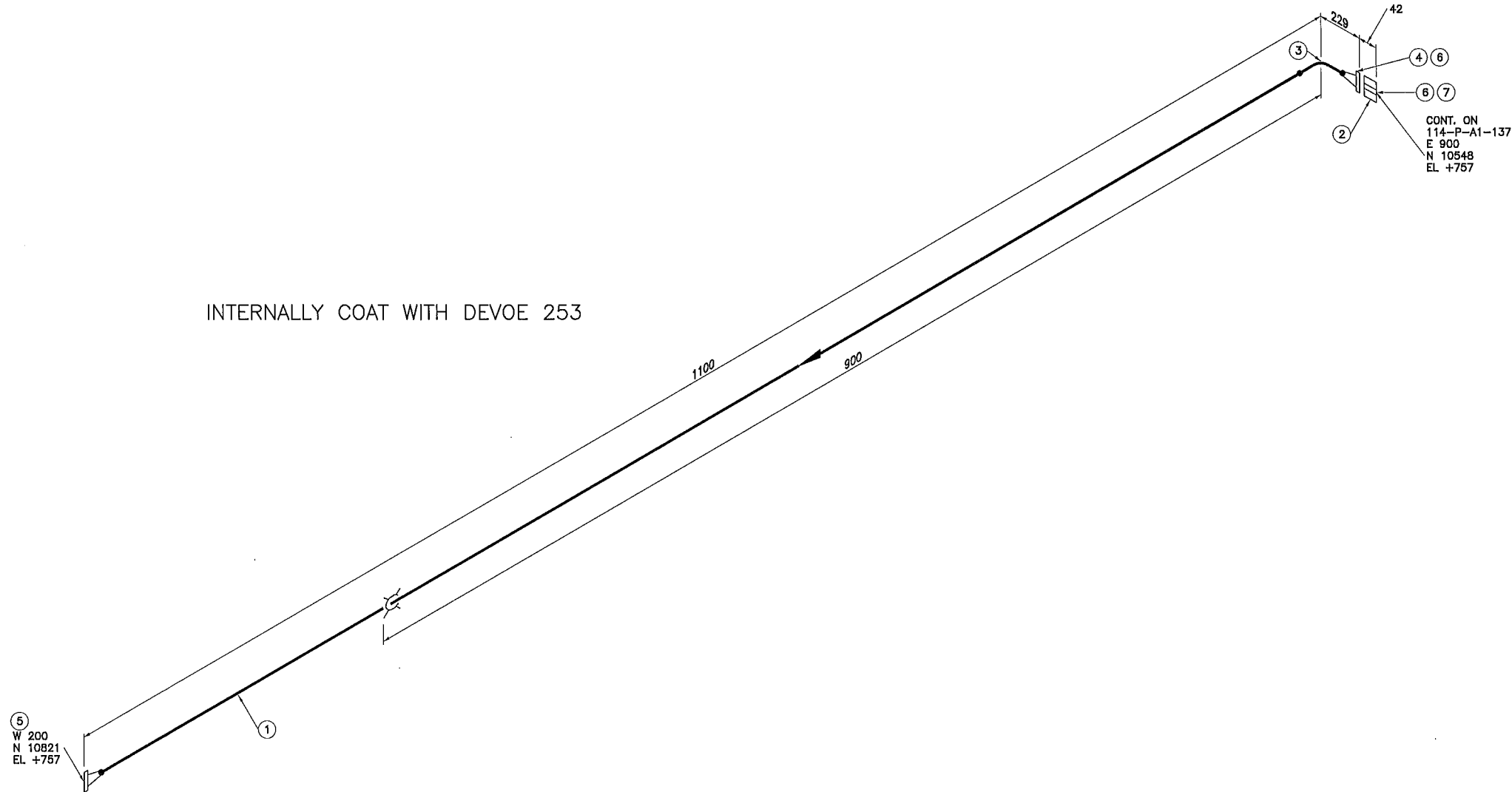
Plot Date: Monday, 04 November 2013 3:19:03 PM File Name: X:\CRESCENT POINT\MANSON 16-04-13-28 W1M\MECHANICAL\04 ISO\114-P-A1-137 SHF-L.DWG By: RC

REFERENCE DRAWING	DESCRIPTION	STAMPS & PERMITS	PROJ. No.	REV.	REVISION DESCRIPTION	DATE	BY	CHK'D	APP'D
			2012128	0	ISSUED FOR CONSTRUCTION	2013.10.31	RAC		

TRIDYNE PROJ. No.: 2012128
DATE: 2013.10.30
DRAWN BY: RAC
CHECKED:
APPROVED:

TRIDYNE PROJECTS
CORPORATION

SPEC	A1
MANSON	
LSD: 16-04-13-28 W1M	
PIPING ISOMETRIC	
OIL BATTERY	
SCALE (D-SIZE):	NONE
DWG No.:	114-P-A1-137
SHT.	1 of 2
REV.	0



INTERNALLY COAT WITH DEVOE 253

BILL OF MATERIAL			
NO.	QTY	SIZE	DESCRIPTION
PIPE			
1	872 MM	4	PIPE SMLS, SCH. 40, A106 B
FITTINGS			
2	1	4	BLEED RING 38mm THK CL150 RF c/w 3/4" NPT TAP A516-70N
3	1	4	ELL 90° LR BW SCH 40 A234 WPB-S
FLANGES			
4	1	4	FLG RFWN CL150 SCH 40 A105N
5	1	4	FLG. RFWN, CL150, SCH. 40, A105N
GASKETS			
6	2	4	GASKET, 1/8" THK, CL150 RF, DURLON 8500
BOLTS			
7	1	5/8	(8) - STUD BOLTS o/w 2 NUTS A193 B7M/A194 2HM (133 MM LG)

ISSUED FOR CONSTRUCTION
NOV 05 2013

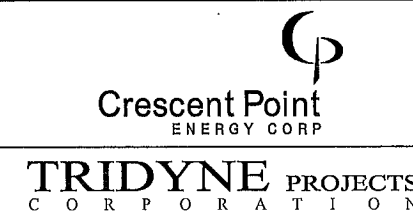
NOTES:
1. FOR PIPING DESIGN DATA SEE LINE LIST
2. ALL COORDINATES AND ELEVATIONS ARE FROM SKID DATUM.

Plot Date: Thursday, 31 October 2013 11:45:00 AM File Name: X:\CRESCENT POINT\MANSON 16-04-13-28 W1M\MECHANICAL\04 ISO\114-P-A1-138 SKT-1.DWG By: RC

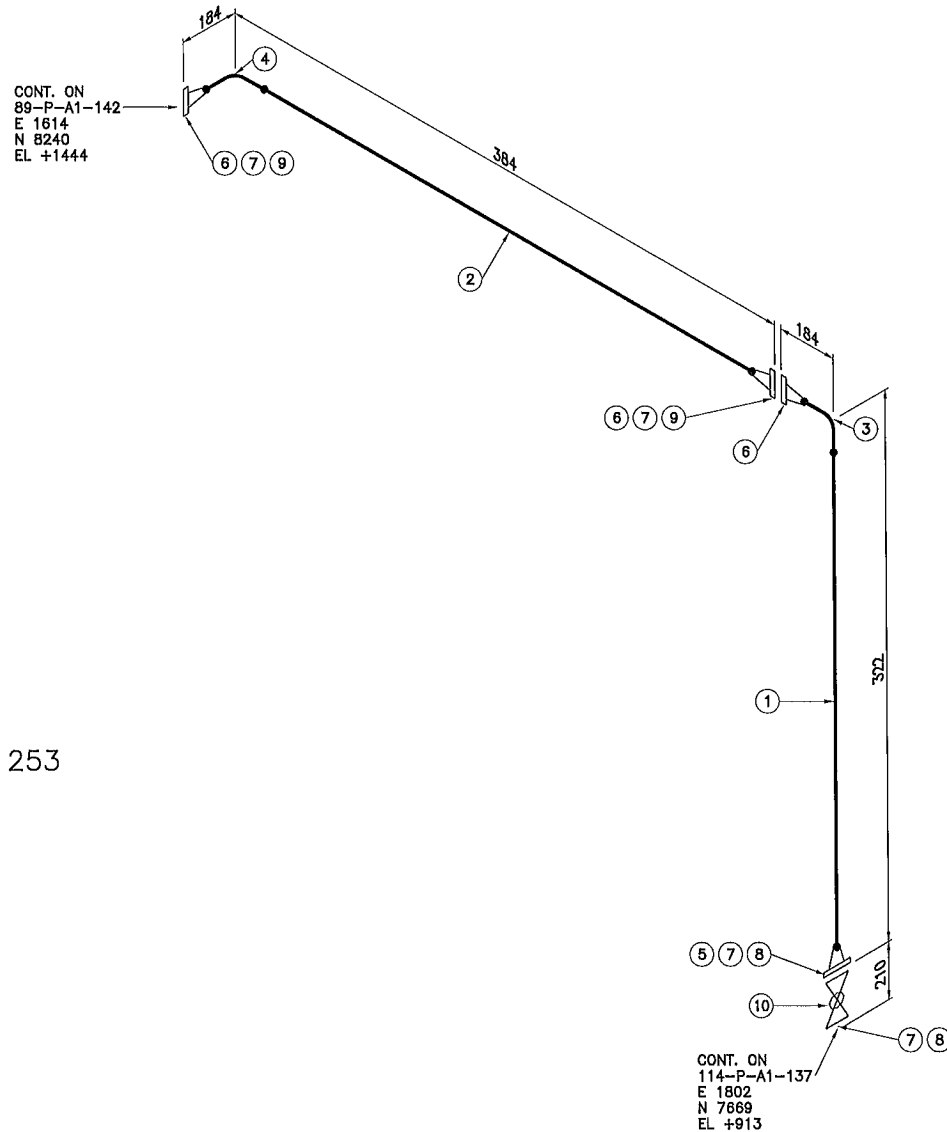
REFERENCE DRAWING	DESCRIPTION	STAMPS & PERMITS	PROJ. No.	REV.	REVISION DESCRIPTION	DATE	BY	CHK'D	APP'D
			2012126	0	ISSUED FOR CONSTRUCTION	2013.10.31	RAC	PM	



TRIDYNE PROJ. No.: 2012126
DATE: 2013.10.30
DRAWN BY: RAC
CHECKED: PM
APPROVED:



SPEC	A1
MANSON	
LSD: 16-04-13-28 W1M	
PIPING ISOMETRIC	
OIL BATTERY	
SCALE (D-SIZE): NONE	DWG No.: 114-P-A1-138
SHT. 1 of 1	REV. 0



INTERNALLY COAT WITH DEVOE 253

ISSUED FOR
CONSTRUCTION
NOV 05 2013

NOTES:
1. FOR PIPING DESIGN DATA SEE LINE LIST
2. ALL COORDINATES AND ELEVATIONS ARE FROM SKID DATUM.

BILL OF MATERIAL			
NO.	QTY	SIZE	DESCRIPTION
PIPE			
1	137 MM	3	PIPE SMLS, SCH. 40, A106 B
2	200 MM	3	PIPE SMLS SCH 40 A106 B
FITTINGS			
3	1	3	ELL. 90° LR BW, SCH. 40, A234 GR WPB-S
4	1	3	ELL. 90° LR BW SCH 40 A234 WPB-S
FLANGES			
5	1	3	FLG. RFWN, CL150, SCH. 40, A105N
6	3	3	FLG RFWN CL150 SCH 40 A105N
GASKETS			
7	4	3	GASKET, 1/8" THK, CL150 RF, DURLON B500
BOLTS			
8	2	5/8	(4) - STUD BOLTS c/w 2 NUTS, A193 B7M /A194 2HM (89 MM LG)
9	2	5/8	(4) - STUD BOLTS c/w 2 NUTS A193 B7M/A194 2HM (89 MM LG)
VALVES			
10	1	3	BALL VALVE CL150 RF FULL PORT DBB A216 WCB NACE

Plot Date: Thursday, 31 October 2013 11:47:36 AM File Name: X:\CRESCENT POINT\MANSON 16-04-13-28 W1M\MECHANICAL\04 ISO\89-P-A1-140 SHT-1.DWG Bx RC

REFERENCE DRAWING	DESCRIPTION	STAMPS & PERMITS	PROJ. No.	REV.	REVISION DESCRIPTION	DATE	BY	CHK'D	APP'D
			2012126	0	ISSUED FOR CONSTRUCTION	2013.10.31	RAC	PM	

TRIDYNE PROJ. No.: 2012126
 DATE: 2013.10.30
 DRAWN BY: RAC
 CHECKED: PM
 APPROVED:

Crescent Point ENERGY CORP

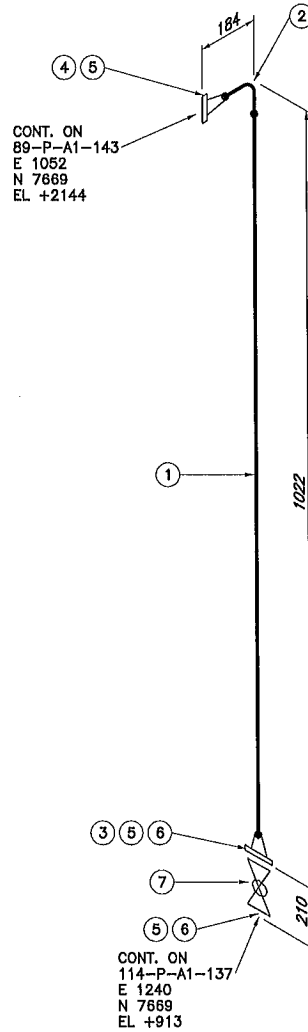
TRIDYNE PROJECTS CORPORATION

SPEC	A1
MANSON	
LSD: 16-04-13-28 W1M	
PIPING ISOMETRIC	
OIL BATTERY	
SCALE (D-SIZE): NONE	DWG No.: 89-P-A1-140
SHT. 1 of 1	REV. 0



Plot Date: Thursday, 31 October 2013 11:48:01 AM File Name: X:\CRESCENT POINT\MANSON 16-04-13-28 W1M\MECHANICAL\04 ISO\89-P-A1-141 SH1-1.DWG By: RC

INTERNALLY COAT WITH DEVOE 253



BILL OF MATERIAL

NO.	QTY	SIZE	DESCRIPTION
PIPE			
1	837 MM	3	PIPE SMLS, SCH. 40, A106 B
FITTINGS			
2	1	3	ELL 90° LR BW SCH 40 A234 WPB-S
FLANGES			
3	1	3	FLG. RFWN, CL150, SCH. 40, A105N
4	1	3	FLG RFWN CL150 SCH 40 A105N
GASKETS			
5	3	3	GASKET, 1/8" THK, CL150 RF, DURLON 8500
BOLTS			
6	2	5/8	(4) - STUD BOLTS c/w 2 NUTS, A193 B7M /A194 2HM (89 MM LG)
VALVES			
7	1	3	BALL VALVE CL150 RF FULL PORT DBB A216 WCB NACE

NOTES:
 1. FOR PIPING DESIGN DATA SEE LINE LIST
 2. ALL COORDINATES AND ELEVATIONS ARE FROM SKID DATUM.

ISSUED FOR
 CONSTRUCTION
 NOV 05 2013


REFERENCE DRAWING	DESCRIPTION



STAMPS & PERMITS

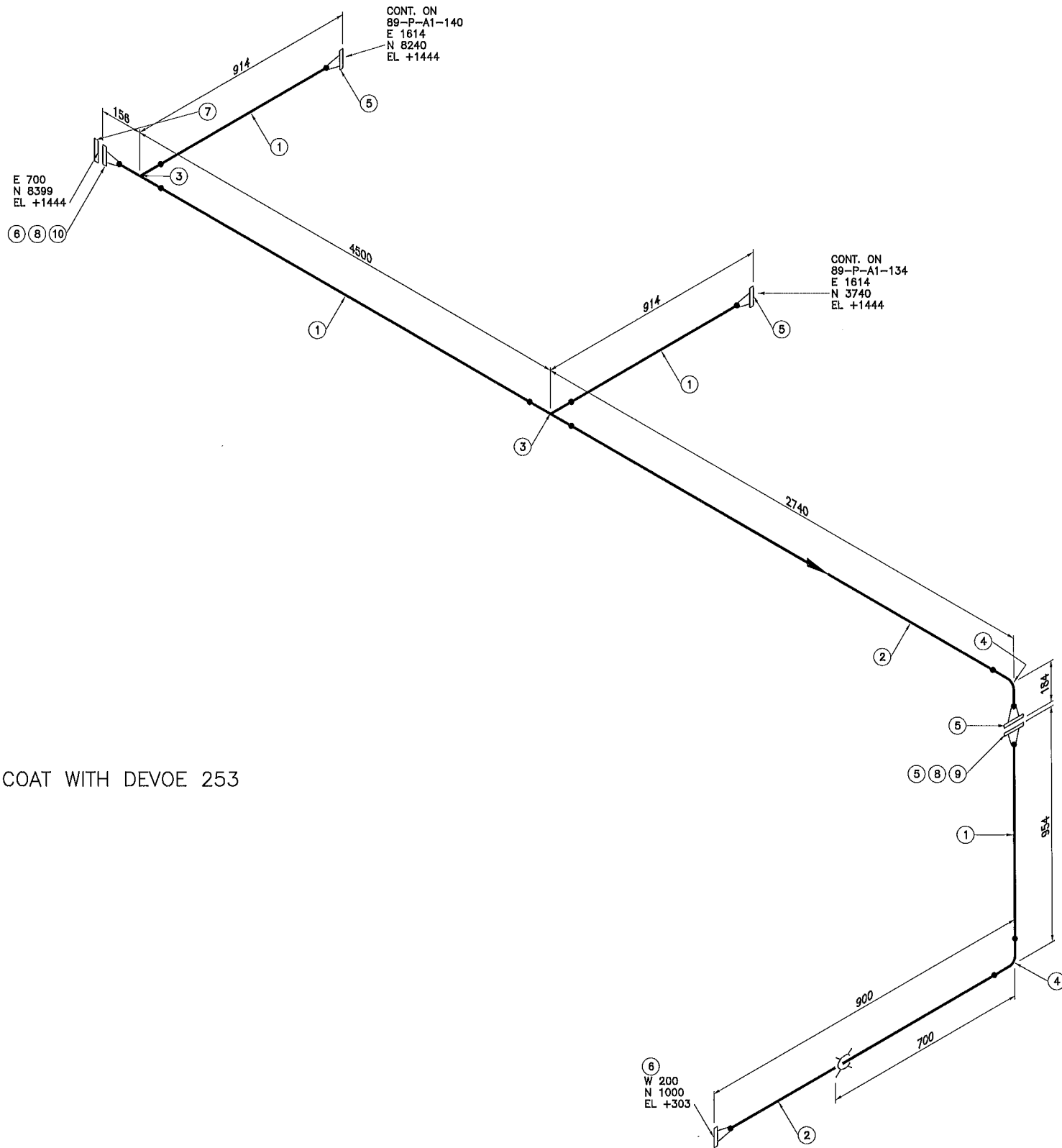
PROJ. No.	REV.	REVISION DESCRIPTION	DATE	BY	CHK'D	APP'D
2012126	0	ISSUED FOR CONSTRUCTION	2013.10.31	RAC	PM	

TRIDYNE PROJ. No.: 2012126
DATE: 2013.10.30
DRAWN BY: RAC
CHECKED: PM
APPROVED:


Crescent Point
 ENERGY CORP

TRIDYNE PROJECTS
 CORPORATION

SPEC	A1
MANSON	
LSD: 16-04-13-28 W1M	
PIPING ISOMETRIC	
OIL BATTERY	
SCALE (D-SIZE): NONE	DWG No.: 89-P-A1-141
SHT. 1 of 1	REV. 0



INTERNALLY COAT WITH DEVOE 253

ISSUED FOR
CONSTRUCTION
NOV 05 2013

NOTES:
1. FOR PIPING DESIGN DATA SEE LINE LIST
2. ALL COORDINATES AND ELEVATIONS ARE FROM SKID DATUM.

BILL OF MATERIAL			
NO.	QTY	SIZE	DESCRIPTION
PIPE			
1	6616 MM	3	PIPE SMLS SCH 40 A106 B
2	3256 MM	3	PIPE SMLS, SCH. 40, A106 B
FITTINGS			
3	2	3X3	TEE STR BW, SCH. 40, A234 GR WPB-S
4	2	3	ELL. 90° LR BW, SCH. 40, A234 GR WPB-S
FLANGES			
5	4	3	FLG RFWN CL150 SCH 40 A105N
6	2	3	FLG. RFWN, CL150, SCH. 40, A105N
7	1	3	FLG. BLD, RF CL150, A105N
GASKETS			
8	2	3	GASKET, 1/8" THK, CL150 RF, DURLON 8500
BOLTS			
9	1	5/8	(4) - STUD BOLTS c/w 2 NUTS A193 B7M/A194 2HM (89 MM LG)
10	1	5/8	(4) - STUD BOLTS c/w 2 NUTS, A193 B7M /A194 2HM (89 MM LG)

Plot Date: Thursday, 31 October 2013 11:48:33 AM File Name: X:\CRESCENT POINT\MANSON 16-04-13-28 W1M\MECHANICAL\04 ISO\89-P-A1-142 SIT-1.DWG By: RC

2012126	0	ISSUED FOR CONSTRUCTION	2013.10.31	RAC	PM		
PROJ. No.	REV.	REVISION DESCRIPTION	DATE	BY	CHK'D	APP'D	

TRIDYNE PROJ. No.: 2012126
DATE: 2013.10.30
DRAWN BY: RAC
CHECKED: PM
APPROVED:

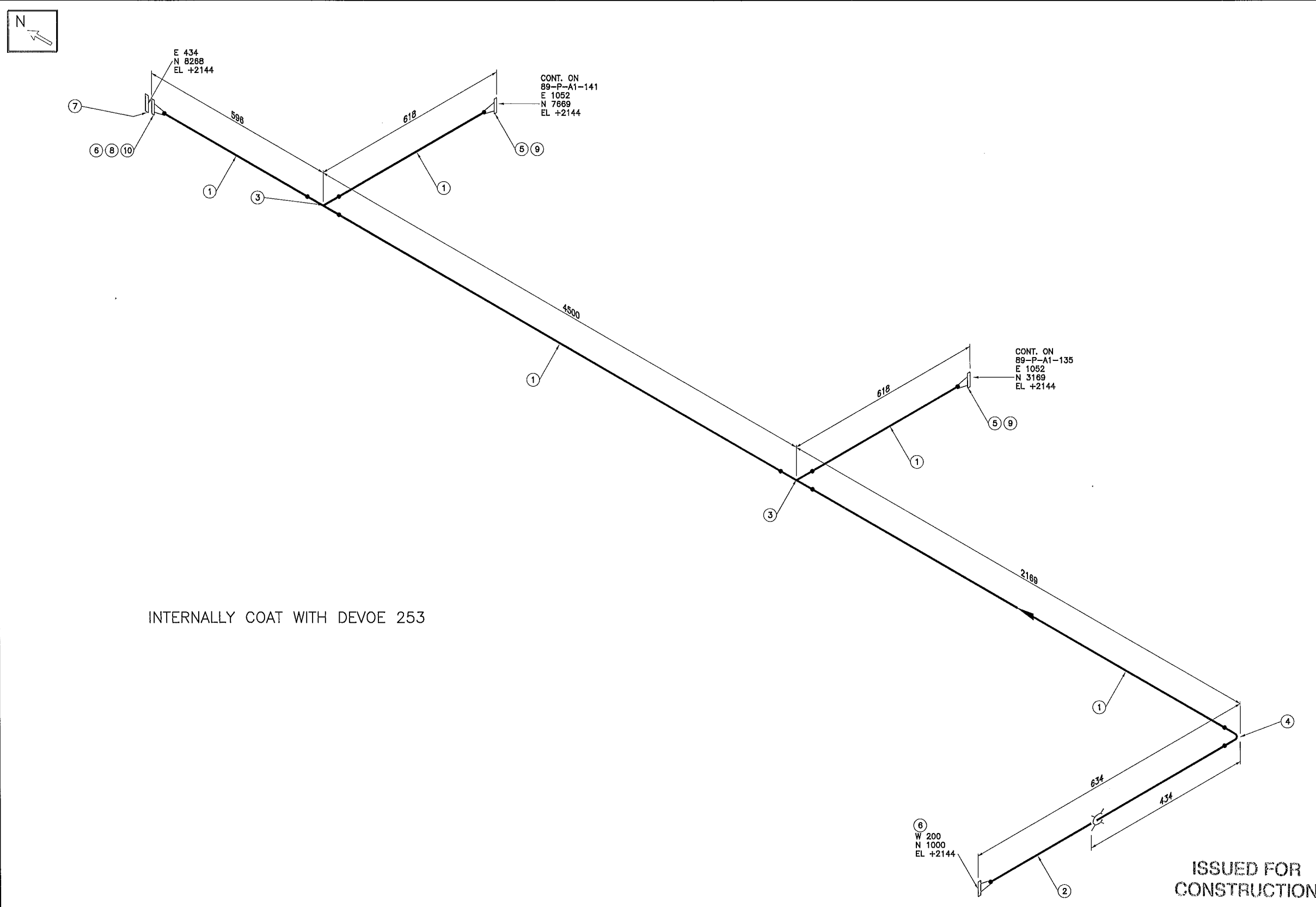
Crescent Point ENERGY CORP

TRIDYNE PROJECTS CORPORATION

SPEC	A1
MANSON	
LSD: 16-04-13-28 W1M	
PIPING ISOMETRIC	
OIL BATTERY	
SCALE (D-SIZE): NONE	DWG No.: 89-P-A1-142
SHT. 1 of 1	REV. 0



Plot Date: Thursday, 31 October 2013 11:49:11 AM File Name: X:\CRESCENT POINT\MANSON 16-04-13-28 W1M\MECHANICAL\04 ISO\89-P-A1-143 SIT-LD.WG By: RC



INTERNALLY COAT WITH DEVOE 253

ISSUED FOR CONSTRUCTION
NOV 05 2013

NOTES:
1. FOR PIPING DESIGN DATA SEE LINE LIST
2. ALL COORDINATES AND ELEVATIONS ARE FROM SKID DATUM.

BILL OF MATERIAL			
NO.	QTY	SIZE	DESCRIPTION
PIPE			
1	7662 MM	3	PIPE SMLS SCH 40 A106 B
2	449 MM	3	PIPE SMLS, SCH. 40, A106 B
FITTINGS			
3	2	3X3	TEE STR BW, SCH. 40, A234 GR WPB-S
4	1	3	ELL. 90° LR BW, SCH. 40, A234 GR WPB-S
FLANGES			
5	2	3	FLG RFWN CL150 SCH 40 A105N
6	2	3	FLG. RFWN, CL150, SCH. 40, A105N
7	1	3	FLG. BLD, RF CL150, A105N
GASKETS			
8	1	3	GASKET, 1/8" THK, CL150 RF, DURLON 8500
BOLTS			
9	2	5/8	(4) - STUD BOLTS c/w 2 NUTS A193 B7M/A194 2HM (89 MM LG)
10	1	5/8	(4) - STUD BOLTS c/w 2 NUTS, A193 B7M /A194 2HM (89 MM LG)

REFERENCE DRAWING	DESCRIPTION

PROVINCE OF MANITOBA
ZOZMAN
Member
33882
REGISTERED PROFESSIONAL ENGINEER

APEGM
Certificate of Authorization
Tridyne Projects Corporation
No. 4854 Date: *Nov 4/13*

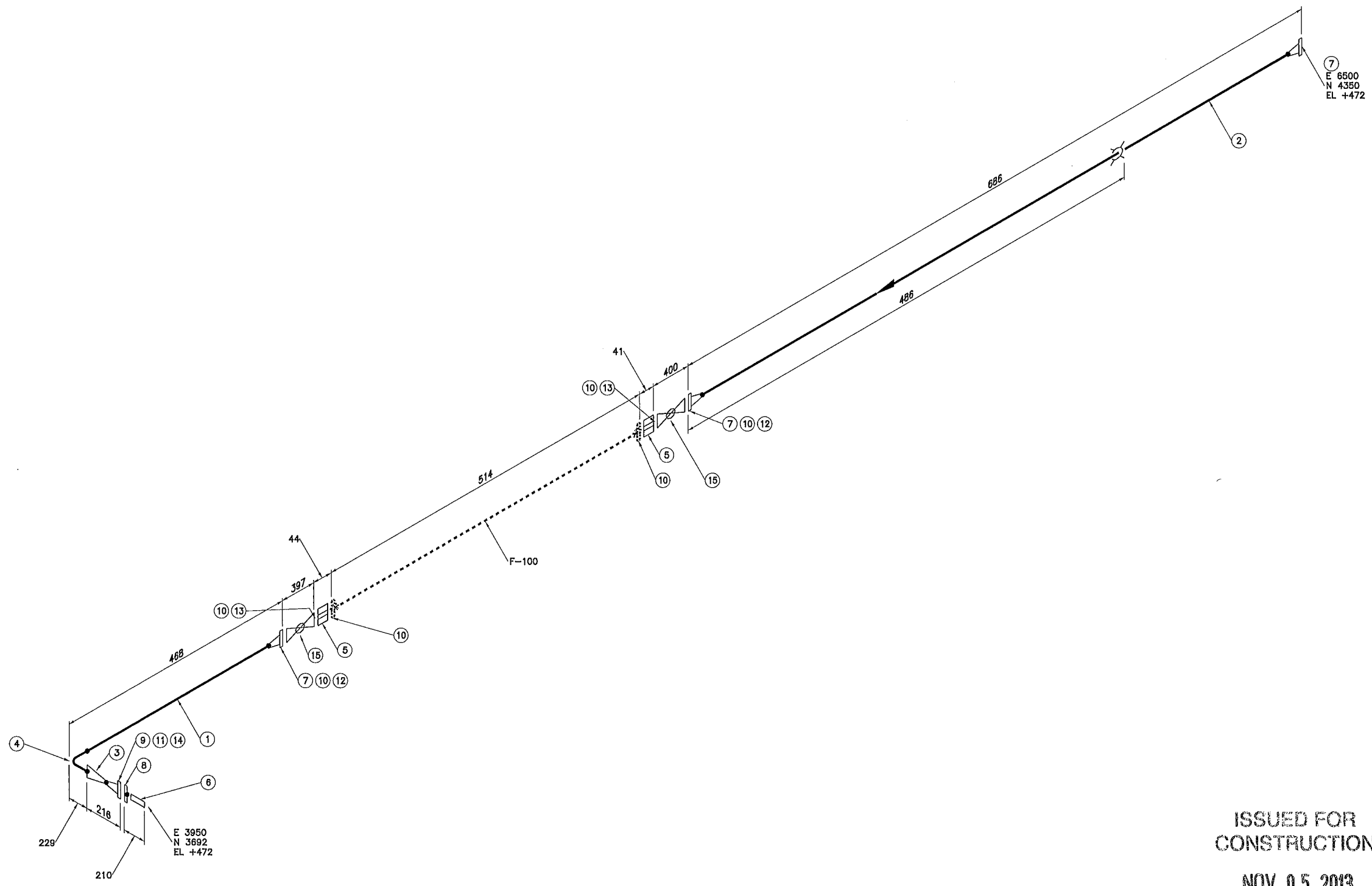
PROJ. No.	REV.	REVISION DESCRIPTION	DATE	BY	CHK'D	APP'D
2012126	0	ISSUED FOR CONSTRUCTION	2013.10.31	RAC	PM	

TRIDYNE PROJ. No.: 2012126
DATE: 2013.10.30
DRAWN BY: RAC
CHECKED: *PM*
APPROVED: *PM*

Crescent Point ENERGY CORP

TRIDYNE PROJECTS CORPORATION

SPEC	A1
MANSON	
LSD: 16-04-13-28 W1M	
PIPING ISOMETRIC	
OIL BATTERY	
SCALE (D-SIZE): NONE	DWG No.: 89-P-A1-143
SHT. 1 of 1	REV. 0



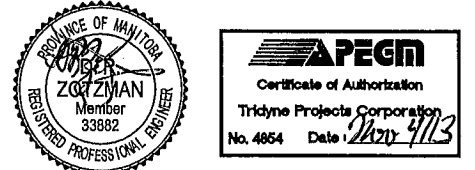
BILL OF MATERIAL			
NO.	QTY	SIZE	DESCRIPTION
PIPE			
1	150 MM	6	PIPE SMLS SCH 40 A106 B
2	508 MM	6	PIPE SMLS, SCH. 40, A106 B
FITTINGS			
3	1	6X4	RED. CONC BW, SCH. 40 x 40, A234 GR WPB-S
4	1	6	ELL. 90° LR BW, SCH. 40, A234 GR WPB-S
5	2	6	BLEED RING 38mm THK CL150 RF c/w 3/4" NPT TAP A516 GR 70N
6	1	4	NIPPLE SMLS, SCH. 80, A106 B - POE-TOE (201 MM LG)
FLANGES			
7	3	6	FLG. RFWN, CL150, SCH. 40, A105N
8	1	4	FLG. SO, 150# RF, A105
9	1	4	FLG. RFWN, CL150, SCH. 40, A105N
GASKETS			
10	6	6	GASKET 1/8" THK CL150 RF SWND 316 SS NON-ASBESTOS
11	1	4	GASKET 1/8" THK CL150 RF SWND 316 SS NON-ASBESTOS
BOLTS			
12	2	3/4	(8) - STUD BOLTS c/w 2 NUTS, A193 B7M /A194 2HM (102 MM LG)
13	2	3/4	(8) - STUD BOLTS c/w 2 NUTS, A193 B7M /A194 2HM (146 MM LG)
14	1	5/8	(8) - STUD BOLTS c/w 2 NUTS, A193 B7M /A194 2HM (89 MM LG)
VALVES			
15	2	6	BALL VALVE CL150 RF FULL PORT A216 WCB NACE

ISSUED FOR CONSTRUCTION
NOV 05 2013

NOTES:
1. FOR PIPING DESIGN DATA SEE LINE LIST
2. ALL COORDINATES AND ELEVATIONS ARE FROM SKID DATUM.

Plot Date: Monday, 04 November 2013 3:18:48 PM File Name: X:\CRESCENT POINT\MANSON 16-04-13-28 W1M\MECHANICAL\04 ISO\168-PO-A1-150 SH1-1.DWG By: RC

REFERENCE DRAWING	DESCRIPTION	STAMPS & PERMITS	PROJ. No.	REV.	REVISION DESCRIPTION	DATE	BY	CHK'D	APP'D
			2012126	0	ISSUED FOR CONSTRUCTION	2013.10.31	RAC		



TRIDYNE PROJECTS CORPORATION

Crescent Point ENERGY CORP

TRIDYNE PROJ. No.: 2012126
DATE: 2013.10.30
DRAWN BY: RAC
CHECKED:
APPROVED:

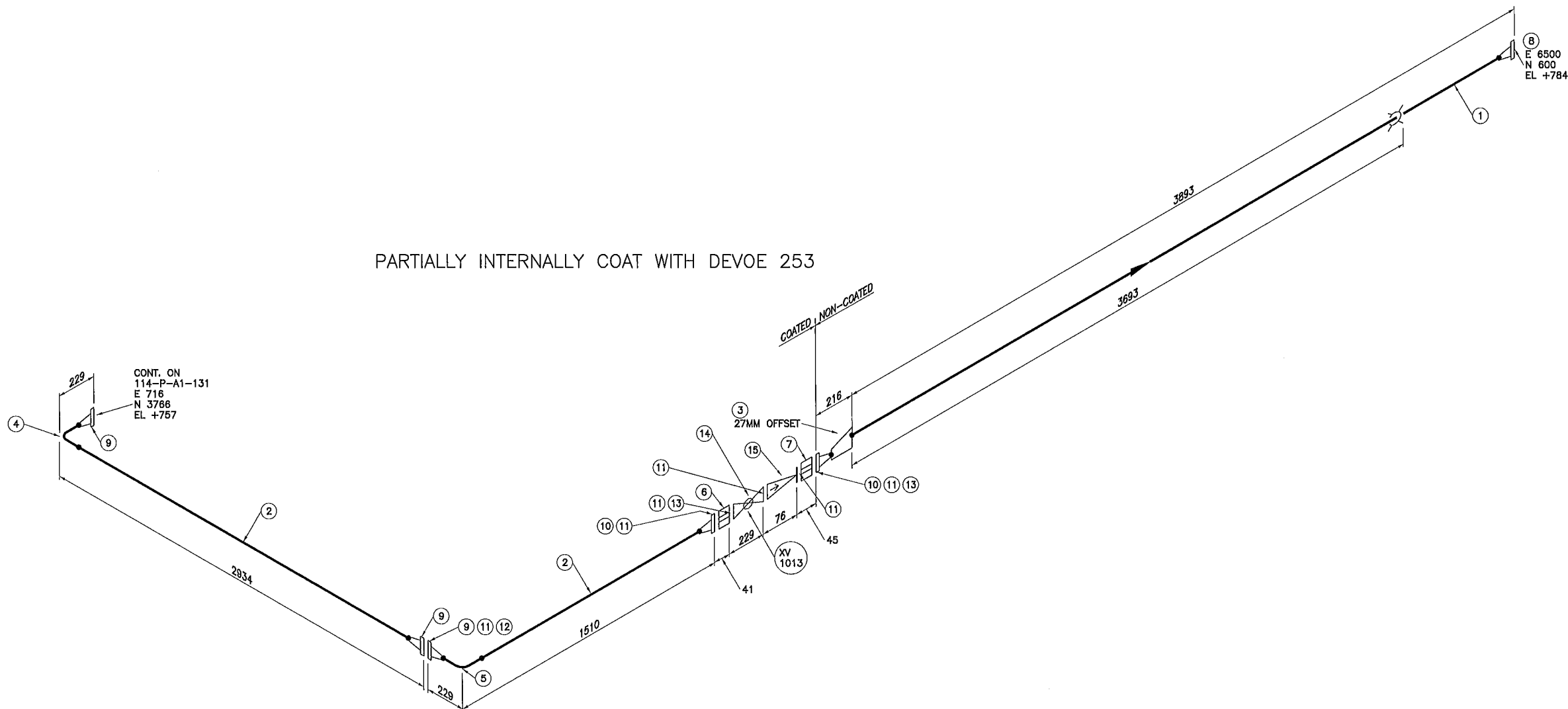
SPEC	A1
MANSON	
LSD: 16-04-13-28 W1M	
PIPING ISOMETRIC	
OIL BATTERY	
SCALE (D-SIZE):	DWG No.:
NONE	168-PO-A1-150
SHT.	REV.
1 of 1	0



BILL OF MATERIAL

NO.	QTY	SIZE	DESCRIPTION
PIPE			
1	3804 MM	6	PIPE SMLS, SCH. 40, A106 B
2	3988 MM	4	PIPE SMLS, SCH. 40, A106 B
FITTINGS			
3	1	6X4	RED. ECC BW, SCH. 40 x 40, A234 GR WPB-S
4	1	4	ELL 90° LR BW SCH 40 A234 WPB-S
5	1	4	ELL. 90° LR BW, SCH. 40, A234 GR WPB-S
6	1	4	BLEED RING 38mm THK CL150 RF c/w 3/4" NPT TAP A516-70N
7	1	4	BLEED RING 38mm THK CL150 RF c/w 3/4" NPT TAP A240 TP316
FLANGES			
8	1	6	FLG. RFWN, CL150, SCH. 40, A105N
9	3	4	FLG RFWN CL150 SCH 40 A105N
10	2	4	FLG. RFWN, CL150, SCH. 40, A105N
GASKETS			
11	6	4	GASKET, 1/8" THK, CL150 RF, DURLON 8500
BOLTS			
12	1	5/8	(8) - STUD BOLTS c/w 2 NUTS A193 B7M/A194 2HM (89 MM LG)
13	2	5/8	(8) - STUD BOLTS c/w 2 NUTS, A193 B7M /A194 2HM (133 MM LG)
VALVES			
14	1	4	BALL VALVE CL150 RF RED PORT A216 WCB NACE
15	1	4	CHECK VALVE WAFER CL150 RF A216 WCB NACE

PARTIALLY INTERNALLY COAT WITH DEVOE 253



ISSUED FOR
CONSTRUCTION
NOV 05 2013

- NOTES:
1. FOR PIPING DESIGN DATA SEE LINE LIST
2. ALL COORDINATES AND ELEVATIONS ARE FROM SKID DATUM.

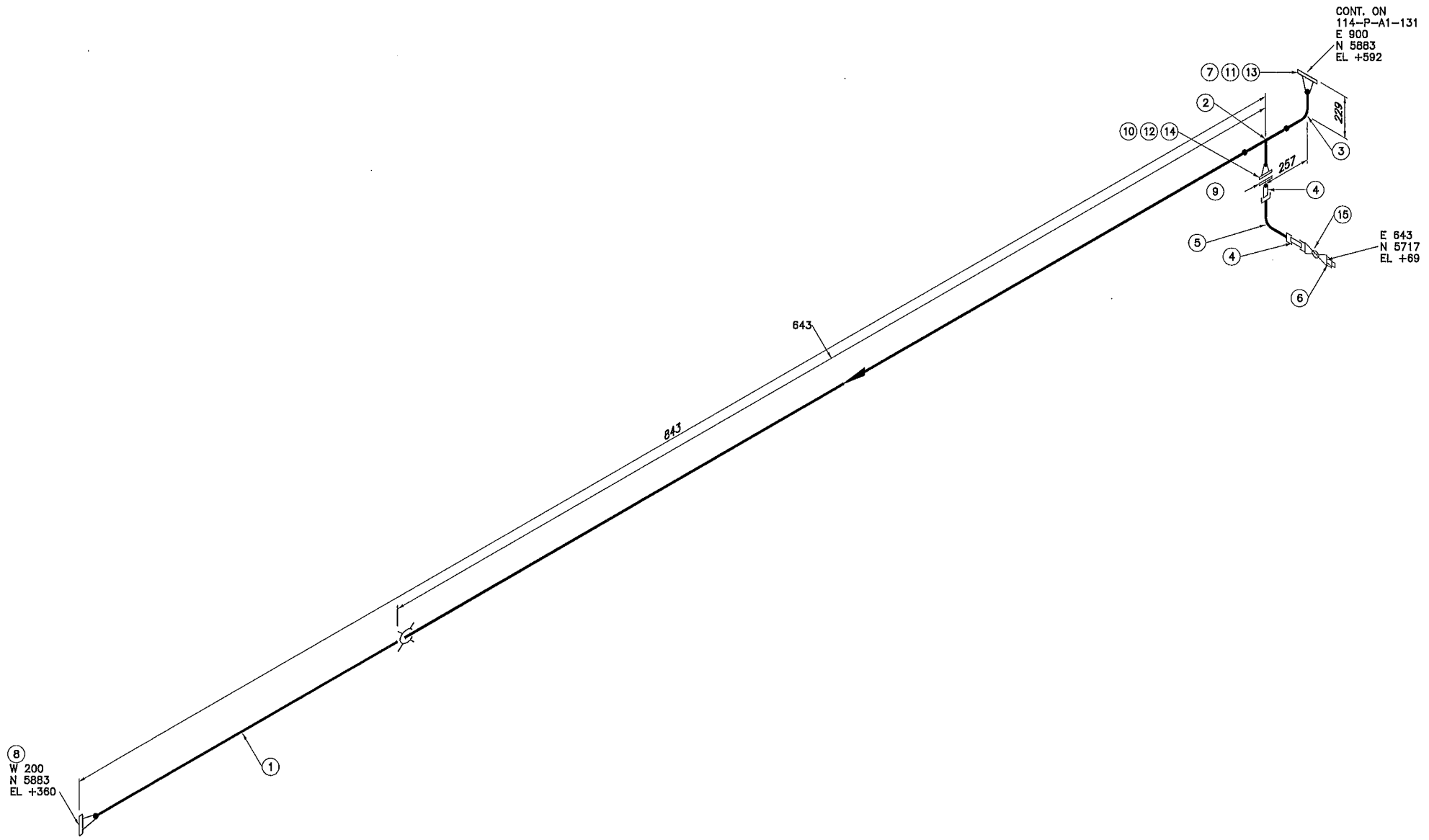
Plot Date: Thursday, 31 October 2013 12:05:33 PM File Name: X:\CRESCENT POINT\MANSON 16-04-13-28 W1M\MECHANICAL\04 ISO\168-PO-A1-152_SHT-1.DWG By: RC

REFERENCE DRAWING	DESCRIPTION	STAMPS & PERMITS	PROJ. No.	REV.	REVISION DESCRIPTION	DATE	BY	CHK'D	APP'D
			2012126	0	ISSUED FOR CONSTRUCTION	2013.10.31	RAC	PM	

TRIDYNE PROJ. No.: 2012126
DATE: 2013.10.30
DRAWN BY: RAC
CHECKED: PM
APPROVED:

TRIDYNE PROJECTS
CORPORATION

SPEC	A1
MANSON	
LSD: 16-04-13-28 W1M	
PIPING ISOMETRIC	
OIL BATTERY	
SCALE (D-SIZE): NONE	DWG No.: 168-PO-A1-152
SHT. 1 of 1	REV. 0



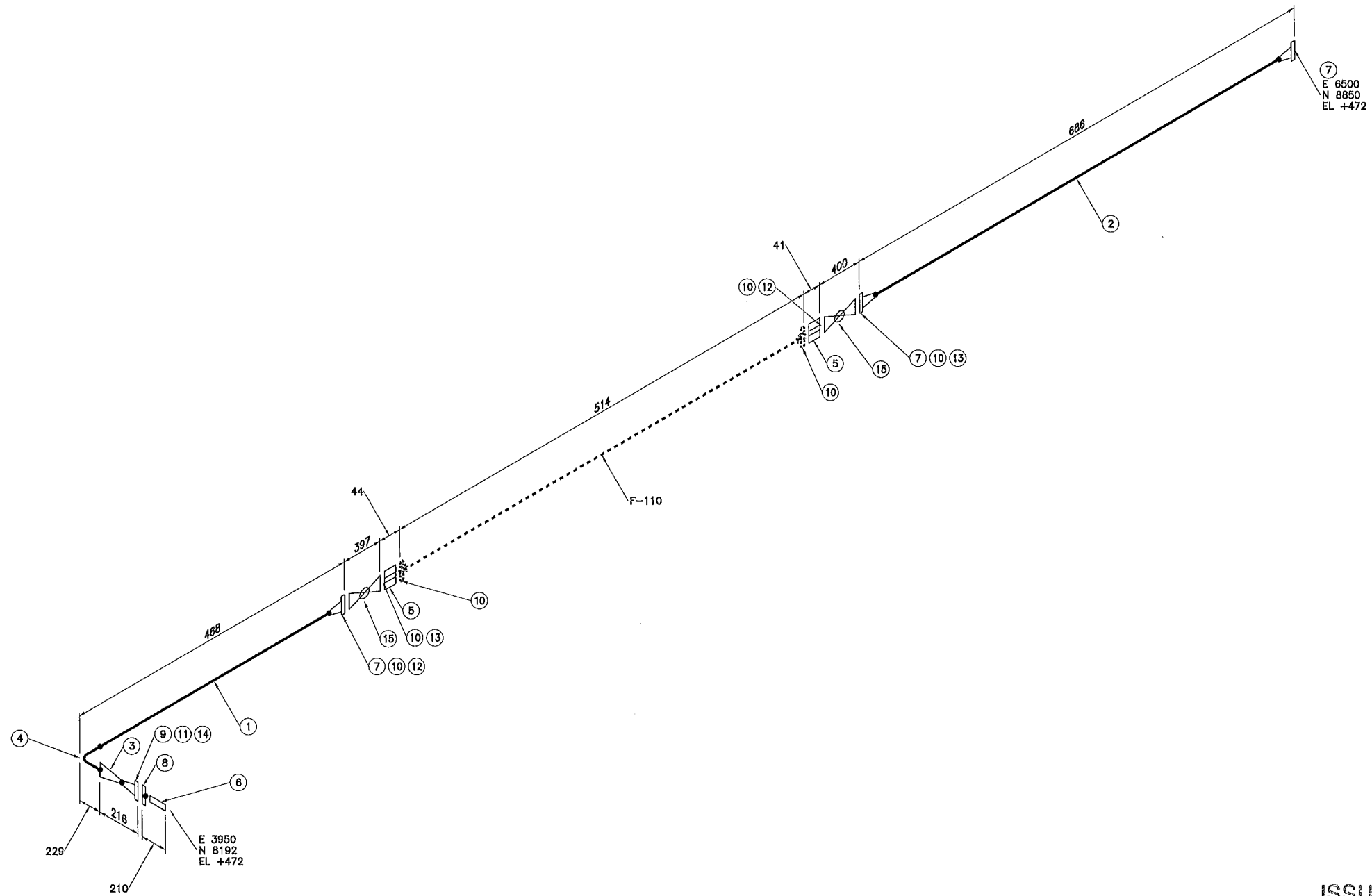
BILL OF MATERIAL			
NO.	QTY	SIZE	DESCRIPTION
PIPE			
1	662 MM	4	PIPE SMLS, SCH. 40, A106 B
FITTINGS			
2	1	4X2	TEE RED BW SCH 40 x 80 A234 WPB-S
3	1	4	ELL 90° LR BW SCH 40 A234 WPB-S
4	2	3/4	NIPPLE SMLS SCH 80S A312
5	1	3/4	IP316/316L TBE (100 MM LG)
6	1	3/4	ELL 90° CL3000 TRD A182 F316/316L
7	1	4	PLUG EXTRA LONG HEX HEAD TRD A105N
FLANGES			
8	1	4	FLG RFWN CL150 SCH 40 A105N
9	1	2X3/4	FLG RF RED TRD CL150 A182 F316/316L
10	1	2	FLG RFWN CL150 SCH 80 A105N
GASKETS			
11	1	4	GASKET 1/8" THK CL150 RF SWND 316 SS NON-ASBESTOS
12	1	2	GASKET 1/8" THK CL150 RF SWND 316 SS NON-ASBESTOS
BOLTS			
13	1	5/8	(8) - STUD BOLTS c/w 2 NUTS A193 B7M/A194 2HM (89 MM LG)
14	1	5/8	(4) - STUD BOLTS c/w 2 NUTS A193 B7M/A194 2HM (83 MM LG)
VALVES			
15	1	3/4	BALL VALVE 2000 WOG TRD A351 CF8M RP NACE

ISSUED FOR
CONSTRUCTION
NOV 05 2013

Plot Date: Monday, 04 November 2013 3:18:42 PM File Name: X:\CRESCENT POINT\MANSON 16-04-13-28 W1M MECHANICAL\04 ISO\14-PO-A1-ES3 SHT-1.DWG By: RC

NOTES:
1. FOR PIPING DESIGN DATA SEE LINE LIST
2. ALL COORDINATES AND ELEVATIONS ARE FROM SKID DATUM.

REFERENCE DRAWING		DESCRIPTION		STAMPS & PERMITS				TRIDYNE PROJ. No.: 2012126 DATE: 2013.10.30 DRAWN BY: RAC CHECKED: APPROVED:		 TRIDYNE PROJECTS CORPORATION		SPEC A1 MANSON LSD: 16-04-13-28 W1M PIPING ISOMETRIC OIL BATTERY		SCALE (D-SIZE): NONE DWG No.: 114-PO-A1-153 SHT. 1 OF 1 REV. 0	
2012126	0	ISSUED FOR CONSTRUCTION	2013.10.31	RAC											
PROJ. No.	REV.	REVISION DESCRIPTION	DATE	BY	CHK'D	APP'D									



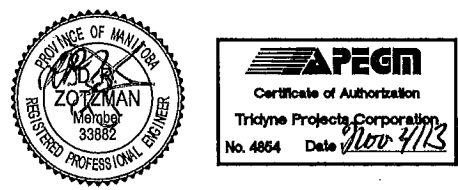
BILL OF MATERIAL			
NO.	QTY	SIZE	DESCRIPTION
PIPE			
1	150 MM	6	PIPE SMLS SCH 40 A106 B
2	508 MM	6	PIPE SMLS, SCH. 40, A106 B
FITTINGS			
3	1	6X4	RED. CONC BW, SCH. 40 x 40, A234 GR WPB-S
4	1	6	ELL. 90° LR BW, SCH. 40, A234 GR WPB-S
5	2	6	BLEED RING 38mm THK CL150 RF c/w 3/4" NPT TAP A516 GR 70N
6	1	4	NIPPLE SMLS, SCH. 80, A106 B - POE-TOE (201 MM LG)
FLANGES			
7	3	6	FLG. RFWN, CL150, SCH. 40, A105N
8	1	4	FLG. SO, 150# RF, A105
9	1	4	FLG. RFWN, CL150, SCH. 40, A105N
GASKETS			
10	6	6	GASKET 1/8" THK CL150 RF SWND 316 SS NON-ASBESTOS
11	1	4	GASKET 1/8" THK CL150 RF SWND 316 SS NON-ASBESTOS
BOLTS			
12	2	3/4	(8) - STUD BOLTS c/w 2 NUTS, A193 B7M /A194 2HM (102 MM LG)
13	2	3/4	(8) - STUD BOLTS c/w 2 NUTS, A193 B7M /A194 2HM (146 MM LG)
14	1	5/8	(8) - STUD BOLTS c/w 2 NUTS, A193 B7M /A194 2HM (89 MM LG)
VALVES			
15	2	6	BALL VALVE CL150 RF FULL PORT A216 WCB NACE

ISSUED FOR
CONSTRUCTION
NOV 05 2013

NOTES:
1. FOR PIPING DESIGN DATA SEE LINE LIST
2. ALL COORDINATES AND ELEVATIONS ARE FROM BKAN DAWM.

Plot Date: Monday, 04 November 2013 3:32:58 PM File Name: X:\CRESCENT POINT\MANSON 16-04-13-28 W1M\MECHANICAL\04 ISO\168-PO-A1-154 SIT-1.DWG By: RC

REFERENCE DRAWING	DESCRIPTION	STAMPS & PERMITS	PROJ. No.	REV.	REVISION DESCRIPTION	DATE	BY	CHK'D	APP'D
			2012126	0	ISSUED FOR CONSTRUCTION	2013.10.31	RAC		

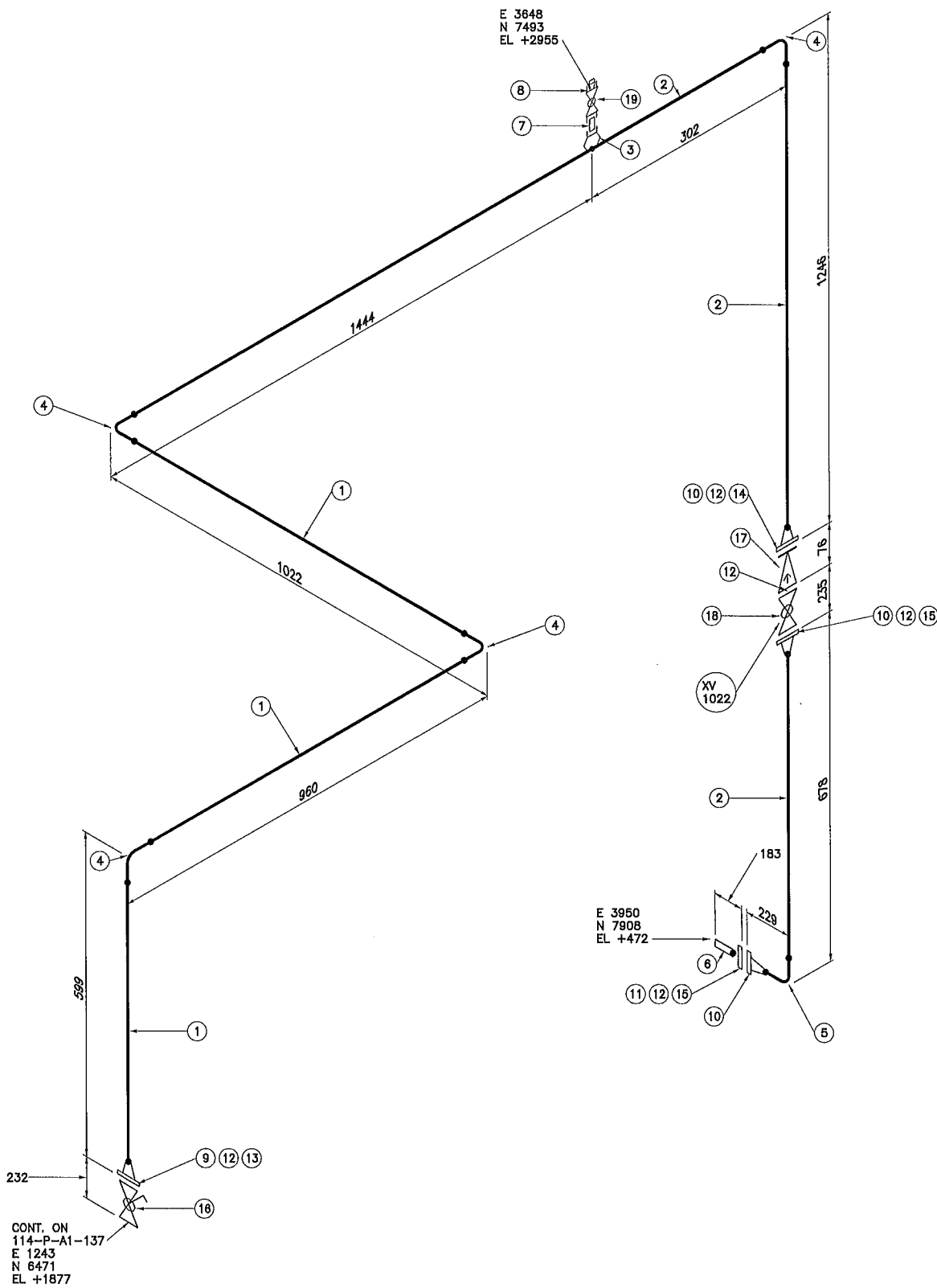


TRIDYNE PROJ. No.: 2012126
DATE: 2013.10.30
DRAWN BY: RAC
CHECKED:
APPROVED:

Crescent Point ENERGY CORP

TRIDYNE PROJECTS CORPORATION

SPEC	A1
MANSON	
LSD: 16-04-13-28 W1M	
PIPING ISOMETRIC	
OIL BATTERY	
SCALE (D-SIZE):	NONE
DWG No.:	168-PO-A1-154
SHT.	1 of 1
REV.	0



ISSUED FOR CONSTRUCTION
NOV 05 2013

NOTES:
1. FOR PIPING DESIGN DATA SEE LINE LIST
2. ALL COORDINATES AND ELEVATIONS ARE FROM SKID DATUM.

CONT. ON 114-P-A1-137
E 1243
N 6471
EL +1877

Plot Date: Monday, 04 November 2013 3:18:32 PM File Name: X:\CRESCENT POINT\MANSON 16-04-13-28 W1M\MECHANICAL\04 ISO\114-PO-A1-155 SH1-1.DWG By: RC

TRIDYNE PROJ. No.: 2012126	DATE: 2013.10.30	DRAWN BY: RAC	CHECKED:	APPROVED:
PROJ. No. 2012126	REV. 0	ISSUED FOR CONSTRUCTION	DATE 2013.10.31	BY RAC
DESCRIPTION	REVISION DESCRIPTION	DATE	BY	CHK'D

PROVINCE OF MANITOBA
ZOTZMAN
REGISTERED PROFESSIONAL ENGINEER
33882

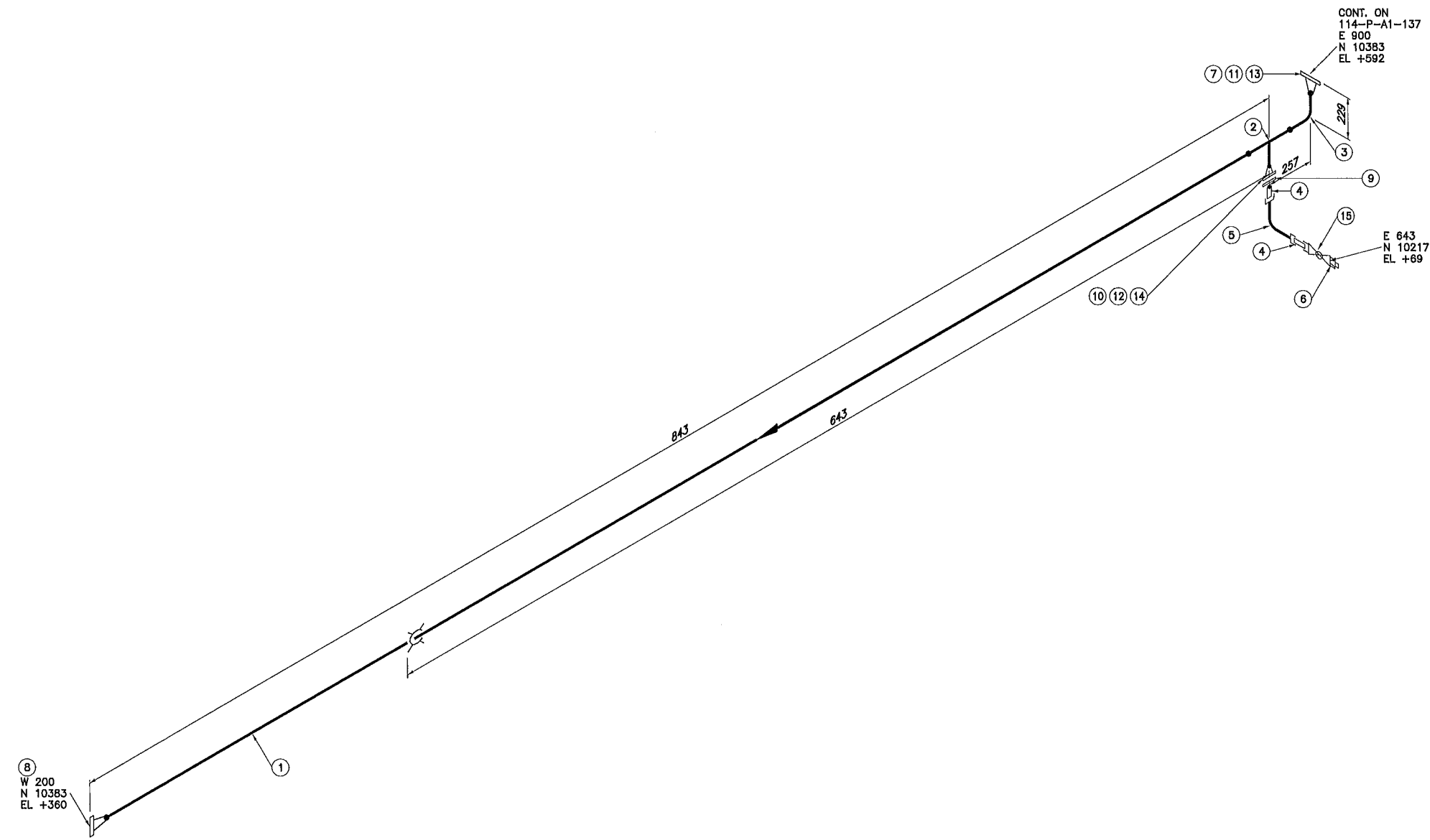
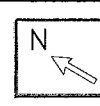
APEGM
Certificate of Authorization
Tridyne Projects Corporation
No. 4854 Date: *Nov 11/13*

Crescent Point
ENERGY CORP

TRIDYNE PROJECTS
CORPORATION

SPEC	A1
MANSON	
LSD: 16-04-13-28 W1M	
PIPING ISOMETRIC	
OIL BATTERY	
SCALE (D-SIZE): NONE	DWG No.: 114-PO-A1-155
SHT. 1 of 1	REV. 0

Plot Date: Monday, 04 November 2013 3:18:26 PM File Name: X:\CRESCENT POINT\MANSON 16-04-13-28 W1M\MECHANICAL\04 ISO\114-PO-A1-157 SHT-1.DWG By: RC



**ISSUED FOR
CONSTRUCTION**

NOV 05 2013

NOTES:
 1. FOR PIPING DESIGN DATA SEE LINE LIST
 2. ALL COORDINATES AND ELEVATIONS ARE FROM SKID DATUM.

BILL OF MATERIAL			
NO.	QTY	SIZE	DESCRIPTION
PIPE			
1	662 MM	4	PIPE SMLS, SCH. 40, A106 B
FITTINGS			
2	1	4X2	TEE RED BW SCH 40 x 80 A234 WPB-S
3	1	4	ELL 90° LR BW SCH 40 A234 WPB-S
4	2	3/4	NIPPLE SMLS SCH 80S A312 TP316/316L TBE (100 MM LG)
5	1	3/4	ELL 90° CL3000 TRD A182 F316/316L
6	1	3/4	PLUG EXTRA LONG HEX HEAD TRD A105N
FLANGES			
7	1	4	FLG RFWN CL150 SCH 40 A105N
8	1	4	FLG. RFWN, CL150, SCH. 40, A105N
9	1	2X3/4	FLG RF RED TRD CL150 A182 F316/316L
10	1	2	FLG RFWN CL150 SCH 80 A105N
GASKETS			
11	1	4	GASKET 1/8" THK CL150 RF SWND 316 SS NON-ASBESTOS
12	1	2	GASKET 1/8" THK CL150 RF SWND 316 SS NON-ASBESTOS
BOLTS			
13	1	5/8	(8) - STUD BOLTS c/w 2 NUTS A193 B7M/A194 2HM (89 MM LG)
14	1	5/8	(4) - STUD BOLTS c/w 2 NUTS A193 B7M/A194 2HM (83 MM LG)
VALVES			
15	1	3/4	BALL VALVE 2000 WOG TRD A351 CF8M RP NACE

REFERENCE DRAWING	DESCRIPTION

PROVINCE OF MANITOBA

 ZOLTMAN
 Member
 33882
 REGISTERED PROFESSIONAL ENGINEER

Certificate of Authorization
 Tridyne Projects Corporation
 No. 4854 Date: *Nov 2013*

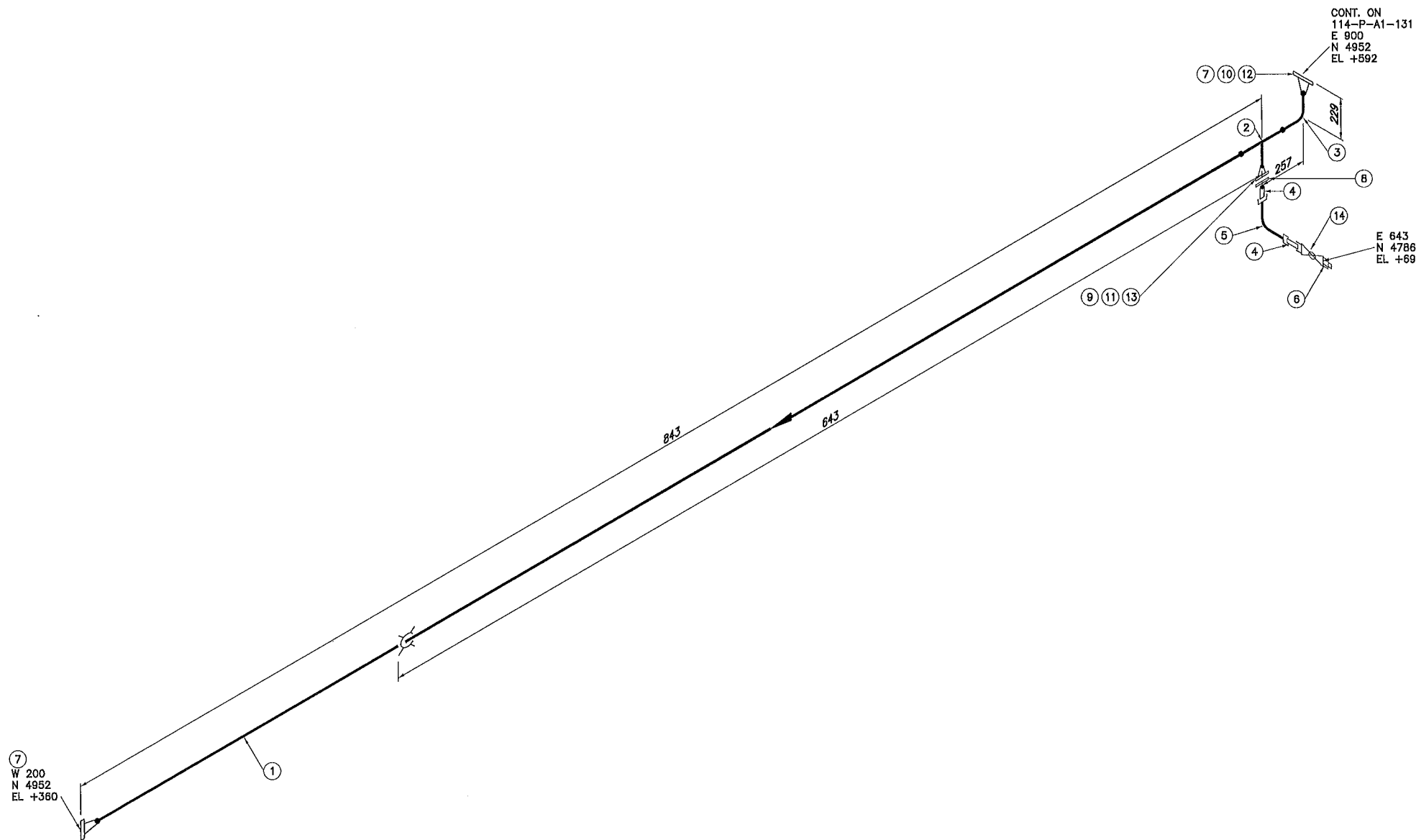
PROJ. No.	REV.	REVISION DESCRIPTION	DATE	BY	CHK'D	APP'D
2012126	0	ISSUED FOR CONSTRUCTION	2013.10.31	RAC		

Crescent Point
 ENERGY CORP

TRIDYNE PROJECTS
 CORPORATION

SPEC	A1
MANSON LSD: 16-04-13-28 W1M PIPING ISOMETRIC OIL BATTERY	
SCALE (D-SIZE): NONE	DWG No.: 114-PO-A1-157
SHT. 1 of 1	REV. 0

Plot Date: Thursday, 31 October 2013 12:10:41 PM File Name: X:\CRESCENT POINT\MANSON 16-04-13-28 W1M MECHANICAL\04 ISO\114-PW-A5-160 SHIT-1.DWG By: RC



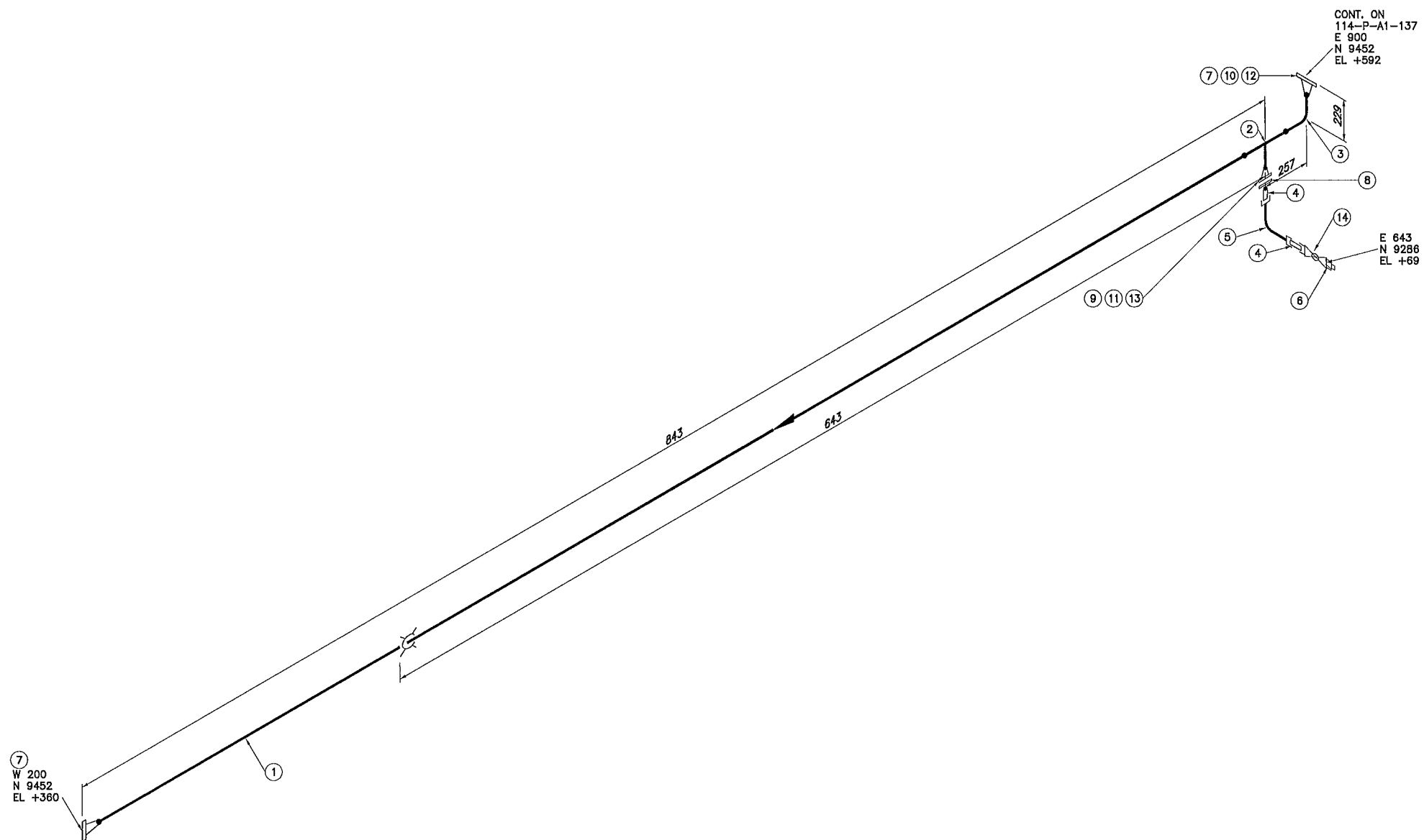
**ISSUED FOR
CONSTRUCTION**

NOV 05 2013

NOTES:
1. FOR PIPING DESIGN DATA SEE LINE LIST
2. ALL COORDINATES AND ELEVATIONS ARE FROM SKID DATUM.

BILL OF MATERIAL			
NO.	QTY	SIZE	DESCRIPTION
PIPE			
1	662 MM	4	PIPE SMLS SCH 40S A312 TP316/316L
FITTINGS			
2	1	4X2	TEE RED BW SCH 40S x 40S A403 WP316/316L-S
3	1	4	ELL 90° LR BW SCH 40S A403 WP316/316L-S
4	2	3/4	NIPPLE SMLS SCH 80S A312 TP316/316L TBE (100 MM LG)
5	1	3/4	ELL 90° CL3000 TRD A182 F316/316L
6	1	3/4	PLUG EXTRA LONG HEX HEAD TRD A182 F316/316L
FLANGES			
7	2	4	FLG RFWN CL150 SCH 40S A182 F316/316L
8	1	2X3/4	FLG RF RED TRD CL150 A182 F316/316L
9	1	2	FLG RFWN CL150 SCH 40S A182 F316/316L
GASKETS			
10	1	4	GASKET 1/8" THK CL150 RF SWND 316 SS NON-ASBESTOS FILLER OUTER CENTERING & INNER RING
11	1	2	GASKET 1/8" THK CL150 RF SWND 316 SS NON-ASBESTOS FILLER OUTER CENTERING & INNER RING
BOLTS			
12	1	5/8	(8) - STUD BOLTS c/w 2 HEAVY HEX NUTS A193 B7M/A194 2HM (89 MM LG)
13	1	5/8	(4) - STUD BOLTS c/w 2 HEAVY HEX NUTS A193 B7M/A194 2HM (83 MM LG)
VALVES			
14	1	3/4	BALL VALVE 2000 WOG TRD A351 CF8M RP NACE

		<table border="1"> <tr> <th>PROJ. No.</th> <th>REV.</th> <th>REVISION DESCRIPTION</th> <th>DATE</th> <th>BY</th> <th>CHK'D</th> <th>APP'D</th> </tr> <tr> <td>2012126</td> <td>0</td> <td>ISSUED FOR CONSTRUCTION</td> <td>2013.10.31</td> <td>RAC</td> <td>RM</td> <td></td> </tr> </table>	PROJ. No.	REV.	REVISION DESCRIPTION	DATE	BY	CHK'D	APP'D	2012126	0	ISSUED FOR CONSTRUCTION	2013.10.31	RAC	RM		<table border="1"> <tr> <td>TRIDYNE PROJ. No.: 2012126</td> <td rowspan="5"> </td> </tr> <tr> <td>DATE: 2013.10.30</td> </tr> <tr> <td>DRAWN BY: RAC</td> </tr> <tr> <td>CHECKED: RM</td> </tr> <tr> <td>APPROVED: RM</td> </tr> </table>	TRIDYNE PROJ. No.: 2012126		DATE: 2013.10.30	DRAWN BY: RAC	CHECKED: RM	APPROVED: RM	<table border="1"> <tr> <td>SPEC</td> <td>A5</td> </tr> <tr> <td colspan="2" style="text-align: center;">MANSON</td> </tr> <tr> <td colspan="2" style="text-align: center;">LSD: 16-04-13-28 W1M</td> </tr> <tr> <td colspan="2" style="text-align: center;">PIPING ISOMETRIC</td> </tr> <tr> <td colspan="2" style="text-align: center;">OIL BATTERY</td> </tr> <tr> <td>SCALE (D-SIZE): NONE</td> <td>DWG No.: 114-PW-A5-160</td> </tr> <tr> <td>SHT. 1 of 1</td> <td>REV. 0</td> </tr> </table>	SPEC	A5	MANSON		LSD: 16-04-13-28 W1M		PIPING ISOMETRIC		OIL BATTERY		SCALE (D-SIZE): NONE	DWG No.: 114-PW-A5-160	SHT. 1 of 1	REV. 0
PROJ. No.	REV.	REVISION DESCRIPTION	DATE	BY	CHK'D	APP'D																																
2012126	0	ISSUED FOR CONSTRUCTION	2013.10.31	RAC	RM																																	
TRIDYNE PROJ. No.: 2012126																																						
DATE: 2013.10.30																																						
DRAWN BY: RAC																																						
CHECKED: RM																																						
APPROVED: RM																																						
SPEC	A5																																					
MANSON																																						
LSD: 16-04-13-28 W1M																																						
PIPING ISOMETRIC																																						
OIL BATTERY																																						
SCALE (D-SIZE): NONE	DWG No.: 114-PW-A5-160																																					
SHT. 1 of 1	REV. 0																																					
REFERENCE DRAWING	DESCRIPTION	STAMPS & PERMITS																																				



BILL OF MATERIAL

NO.	QTY	SIZE	DESCRIPTION
PIPE			
1	662 MM	4	PIPE SMLS SCH 40S A312 TP316/316L
FITTINGS			
2	1	4X2	TEE RED BW SCH 40S x 40S A403 WP316/316L-S
3	1	4	ELL 90° LR BW SCH 40S A403 WP316/316L-S
4	2	3/4	NIPPLE SMLS SCH 80S A312 TP316/316L TBE (100 MM LG)
5	1	3/4	ELL 90° CL3000 TRD A182 F316/316L
6	1	3/4	PLUG EXTRA LONG HEX HEAD TRD A182 F316/316L
FLANGES			
7	2	4	FLG RFWN CL150 SCH 40S A182 F316/316L
8	1	2X3/4	FLG RF RED TRD CL150 A182 F316/316L
9	1	2	FLG RFWN CL150 SCH 40S A182 F316/316L
GASKETS			
10	1	4	GASKET 1/8" THK CL150 RF SWND 316 SS NON-ASBESTOS FILLER OUTER CENTERING & INNER RING
11	1	2	GASKET 1/8" THK CL150 RF SWND 316 SS NON-ASBESTOS FILLER OUTER CENTERING & INNER RING
BOLTS			
12	1	5/8	(8) - STUD BOLTS c/w 2 HEAVY HEX NUTS A193 B7M/A194 2HM (89 MM LG)
13	1	5/8	(4) - STUD BOLTS c/w 2 HEAVY HEX NUTS A193 B7M/A194 2HM (83 MM LG)
VALVES			
14	1	3/4	BALL VALVE 2000 WOG TRD A351 CF8M RP NACE

ISSUED FOR CONSTRUCTION
NOV 05 2013

Plot Date: Thursday, 31 October 2013 12:10:19 PM File Name: X:\CRESCENT POINT\MANSON 16-04-13-28 W1M\MECHANICAL\04 ISO\114-PW-A5-161 SHT-1.DWG By: RC

NOTES:
1. FOR PIPING DESIGN DATA SEE LINE LIST
2. ALL COORDINATES AND ELEVATIONS ARE FROM SKID DATUM.

REFERENCE DRAWING	DESCRIPTION

ZOTZMAN
Member
33882

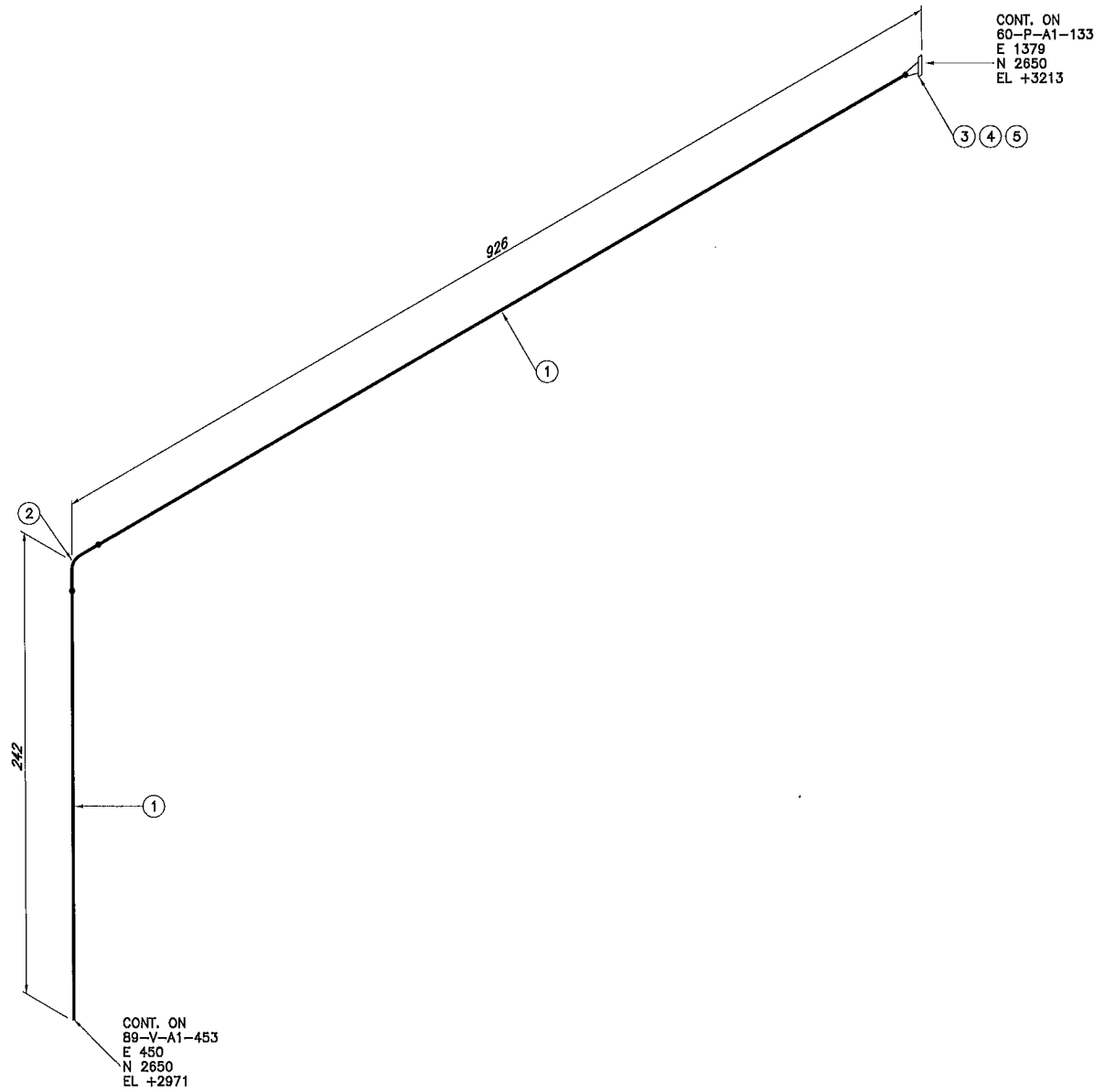
APECM
Certificate of Authorization
Tridyne Projects Corporation
No. 4854 Date 10-4-13

PROJ. No.	REV.	REVISION DESCRIPTION	DATE	BY	CHK'D	APP'D
2012126	0	ISSUED FOR CONSTRUCTION	2013.10.31	RAC	VM	

TRIDYNE PROJ. No.: 2012126
DATE: 2013.10.30
DRAWN BY: RAC
CHECKED: PM
APPROVED: PM

TRIDYNE PROJECTS
CORPORATION

SPEC	A5
MANSON	
LSD: 16-04-13-28 W1M	
PIPING ISOMETRIC	
OIL BATTERY	
SCALE (D-SIZE): NONE	DWG No.: 114-PW-A5-161
SHT. 1 of 1	REV. 0



BILL OF MATERIAL			
NO.	QTY	SIZE	DESCRIPTION
PIPE			
1	952 MM	2	PIPE SMLS SCH 80 A106 B
FITTINGS			
2	1	2	ELL. 90° LR BW, SCH. 80, A234 GR WPB-S
FLANGES			
3	1	2	FLG RFWN CL150 SCH 80 A105N
GASKETS			
4	1	2	GASKET 1/8" THK CL150 RF SWND 316 SS NON-ASBESTOS FILLER OUTER CENTERING & INNER RING
BOLTS			
5	1	5/8	(4) - STUD BOLTS o/w 2 NUTS A193 B7M/A194 2HM (83 MM LG)

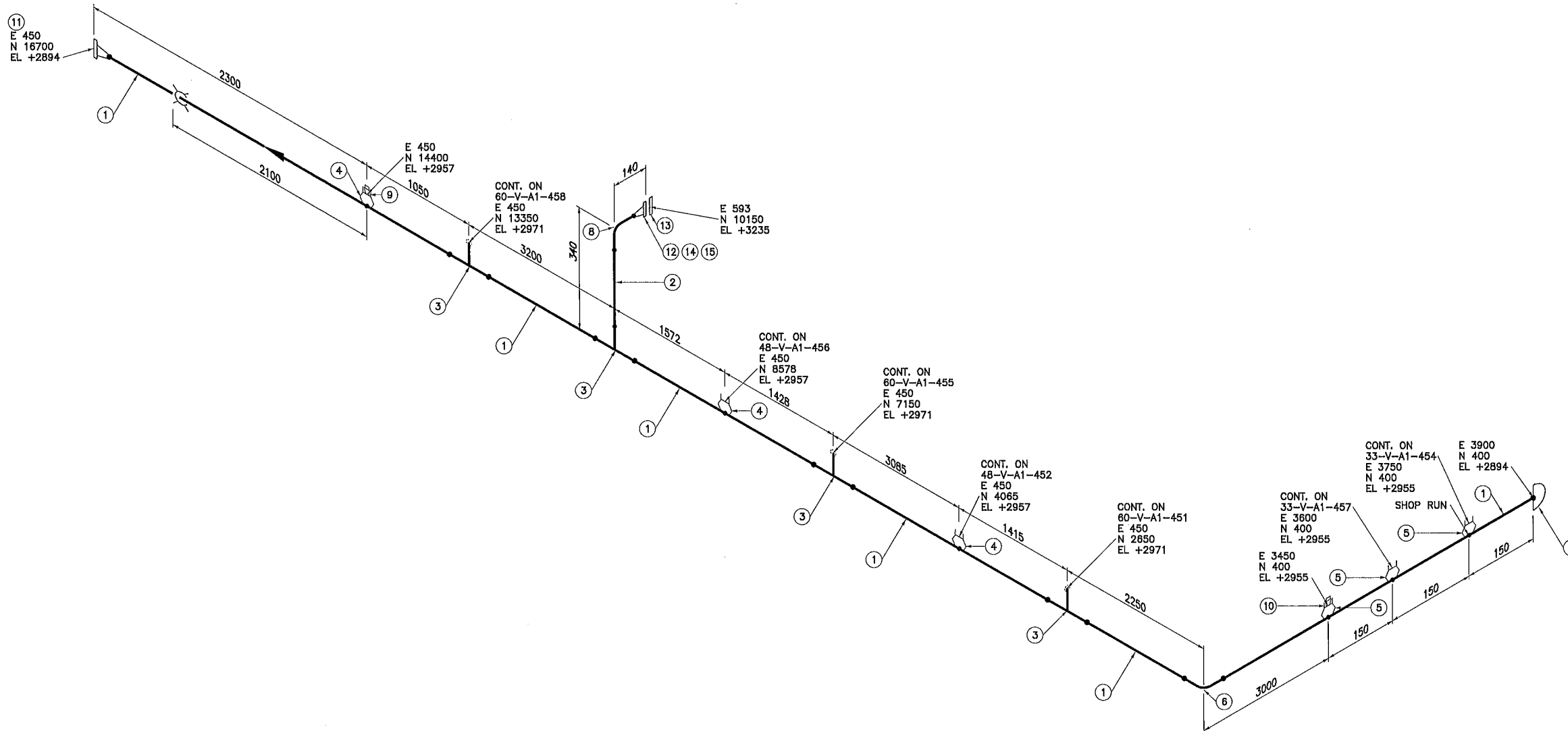
Plot Date: Thursday, 31 October 2013 12:15:19 PM File Name: X:\CRESCENT POINT\MANSON 16-04-13-28 W1M\MECHANICAL\04 ISO\60-V-A1-451 SHT-1.DWG By: RC

NOTES:
 1. FOR PIPING DESIGN DATA SEE LINE LIST
 2. ALL COORDINATES AND ELEVATIONS ARE FROM SKID DATUM.

ISSUED FOR CONSTRUCTION

NOV 05 2013

REFERENCE DRAWING		DESCRIPTION		STAMPS & PERMITS				TRIDYNE PROJ. No.: 2012126 DATE: 2013.10.30 DRAWN BY: RAC CHECKED: <i>RAC</i> APPROVED: <i>RAC</i>		 TRIDYNE PROJECTS CORPORATION		SPEC A1 MANSON LSD: 16-04-13-28 W1M PIPING ISOMETRIC OIL BATTERY		SCALE (D-SIZE): NONE DWG No.: 60-V-A1-451 SHT. 1 of 1 REV. 0	
2012126	0	ISSUED FOR CONSTRUCTION	2013.10.31	RAC	<i>RAC</i>										
PROJ. No.	REV.	REVISION DESCRIPTION	DATE	BY	CHK'D	APP'D									



BILL OF MATERIAL

NO.	QTY	SIZE	DESCRIPTION
PIPE			
1	18764 MM	3	PIPE SMLS, SCH. 40, A106 B
2	188 MM	2	PIPE SMLS, SCH. 80, A106 B
FITTINGS			
3	4	3X2	TEE RED BW, SCH. 40 x 80, A234 GR WPB-S
4	3	3X1 1/2	TOL, CL3000, A105N
5	3	3X1	TOL, CL3000, A105N
6	1	3	ELL. 90° LR BW, SCH. 40, A234 GR WPB-S
7	1	3	CAP BW, SCH. 40, A234 GR WPB-S
8	1	2	ELL. 90° LR BW, SCH. 80, A234 GR WPB-S
9	1	1 1/2	PLUG, EXTRA LONG HEX HEAD, THRD, A105N
10	1	1	PLUG, EXTRA LONG HEX HEAD, THRD, A105N
FLANGES			
11	1	3	FLG. RFWN, CL150, SCH. 40, A105N
12	1	2	FLG. RFWN, CL150, SCH. 80, A105N
13	1	2	FLG. BLD, RF CL150, A105N
GASKETS			
14	1	2	GASKET, 1/8" THK, CL150 RF, SWND 316 SS, NON-ASBESTOS
BOLTS			
15	1	5/8	(4) - STUD BOLTS c/w 2 NUTS, A193 B7M /A194 2HM (83 MM LG)

Plot Date: Thursday, 31 October 2013 12:15:46 PM File Name: X:\CRESCENT POINT\MANSON 16-04-13-28 W1M\MECHANICAL\04 ISO\88-V-A1-453 SHT-1.DWG By: RC

NOTES:
 1. FOR PIPING DESIGN DATA SEE LINE LIST
 2. ALL COORDINATES AND ELEVATIONS ARE FROM SKID DATUM.

ISSUED FOR CONSTRUCTION
 NOV 05 2013

REFERENCE DRAWING	DESCRIPTION

PROVINCE OF MANITOBA
ZOTZMAN
 Member
 33882
 REGISTERED PROFESSIONAL ENGINEER

APEGM
 Certificate of Authorization
 Tridyne Projects Corporation
 No. 4854 Date: *Nov 4/13*

PROJ. No.	REV.	REVISION DESCRIPTION	DATE	BY	CHK'D	APP'D
2012126	0	ISSUED FOR CONSTRUCTION	2013.10.31	RAC	<i>PM</i>	

TRIDYNE PROJ. No.: 2012126
 DATE: 2013.10.30
 DRAWN BY: RAC
 CHECKED: *PM*
 APPROVED: *PM*

Crescent Point
 ENERGY CORP

TRIDYNE PROJECTS
 CORPORATION

SPEC	A1
MANSON	
LSD: 16-04-13-28 W1M	
PIPING ISOMETRIC	
OIL BATTERY	
SCALE (D-SIZE): NONE	DWG No.: 89-V-A1-453
SHT. 1 of 1	REV. 0

