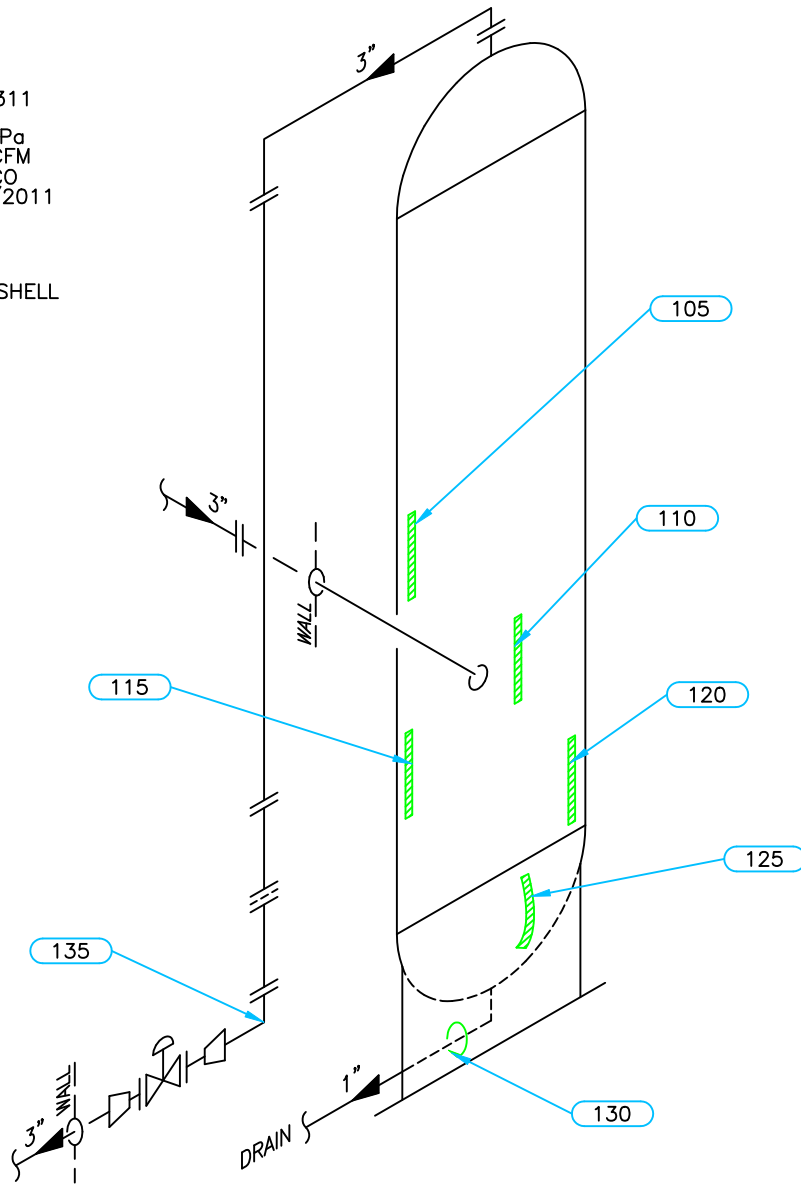


**PSV DATA**

MFG: TAYLOR  
 MODEL: 82G11651311  
 SERIAL: 27183-17  
 SET PRES: 6894 kPa  
 CAPACITY: 7580 SCFM  
 SERVICED BY: DALCO  
 SERVICE DATE: 06/2011  
 SIZE: 2" x 2"  
 CODE STAMP: UV  
 BLOCK VALVE: NO  
 CRN: OG1316.2C  
 LOCATION: LOWER SHELL  
 TAG: N/S



GLYCOL PIPING PSV  
 PSV DATA  
 MFG: CONSOLIDATED  
 MODEL: 19096LC-2  
 SERIAL: TP25333  
 SET PRES: 345 kPa  
 CAPACITY: 68.16 LPM  
 SERVICED BY: DAYCO  
 SERVICE DATE: 06/2011  
 SIZE: 1" x 1"  
 CODE STAMP: UV  
 BLOCK VALVE: NO  
 CRN: OG5530.SZR2  
 LOCATION: GLYCOL PIPING  
 TAG: N/S

Equip. No. \_\_\_\_\_ Prov. Reg. No. **Ⓐ 523774** C.R.N. **R-7959.21** Serial No. **043150-101** Yr. Inst. \_\_\_\_\_  
 Code/Div. **ASME VIII, Div 1** Size: **20in x 24ft** Manufacturer: **PROPANE SYSTEMS** Yr. Blt. **2004**  
 C. Stamp: **U** Service: **SOUR** PWHT: **NIL** Radiography: **NIL** Insulated: **NO**

**Design & Materials Data**

**HEAD:**  
 Top Mat'l. **SA 516 70N** Top Nom. **20.8mm** Top C.A. **N/S**  
 Btm. Mat'l. \_\_\_\_\_ Btm. Nom. \_\_\_\_\_ Btm. C.A. \_\_\_\_\_  
**CHANNEL:**  
 Material: \_\_\_\_\_ Nominal: \_\_\_\_\_ C.A. \_\_\_\_\_  
**BOOT**  
 Head Mat'l. \_\_\_\_\_ Head Nom. \_\_\_\_\_ Head C.A. \_\_\_\_\_  
 Shell Mat'l. \_\_\_\_\_ Shell Nom. \_\_\_\_\_ Shell C.A. \_\_\_\_\_  
**SHELL**  
 Material: **SA 516 70N** Nominal: **22.2mm** C.A. **N/S**  
 MAWP Shell Side: **9756** kPa @ Temp. **66°C**  
 MAWP Tube Side: \_\_\_\_\_ @ Temp. \_\_\_\_\_

CLIENT	CANADIAN NATURAL RESOURCES	
FACILITY	UMBACH FIELD LSD c-37-F/94-H-03	
ITEM	GLYCOL CONTACTOR	
BY: CW	DATE: 03/2012	DWG.# 29



