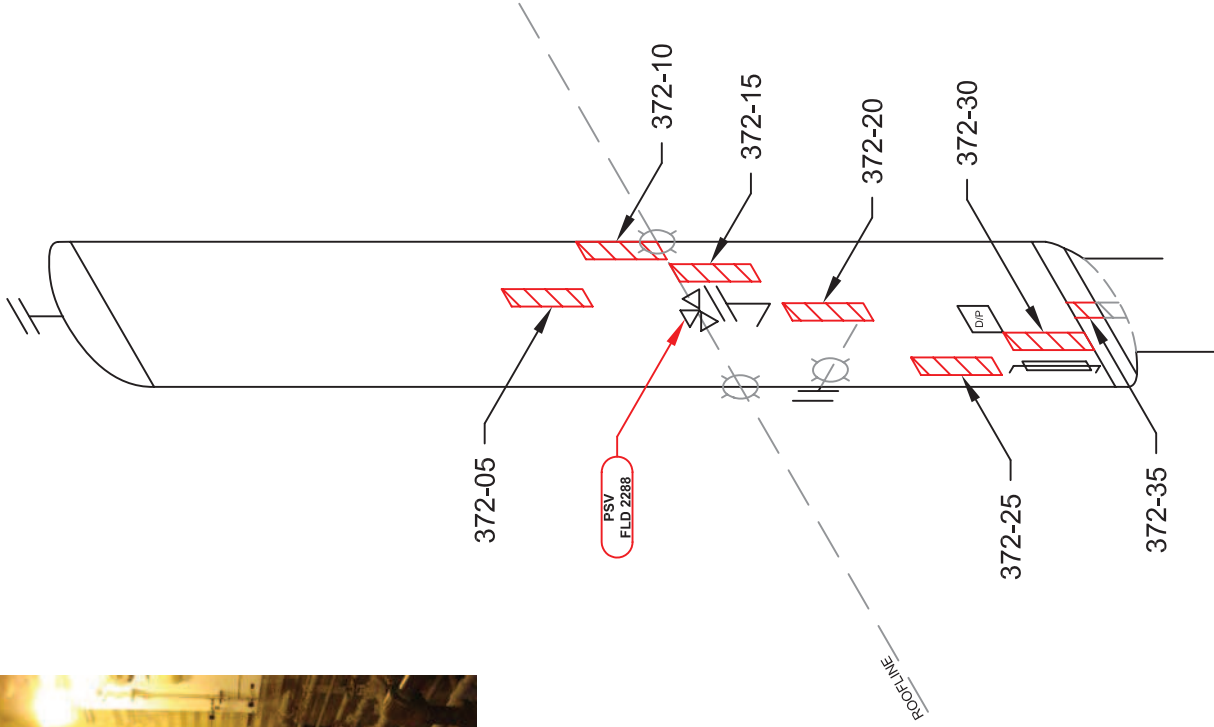
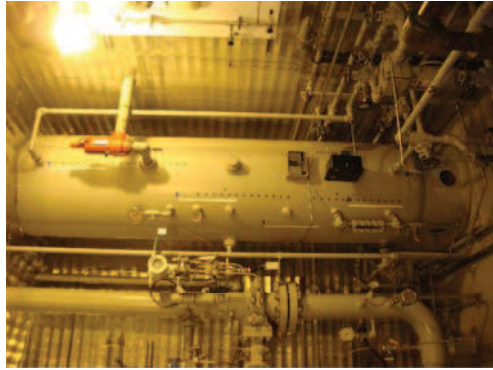


ITEM:

3 PHASE GLYCOL CONTACTOR

A 0465134



		TECHNICIAN:	
STETTLER, AB (403) 742-4868 LACOMBE, AB (403) 782-7855 BROOKS, AB (403) 501-8029 GRANDE PRAIRIE, AB (866) 422-9732		STEPHEN KEELEY SNT LEVEL II CGSB 48.9712 LEVEL II # 12288	
DATE:	02/03/10	DWG # 372	
CLIENT:	BARRICK ENERGY INC.		
LSD:	15-16-069-22-W5M		
INSPECTOR:	MWS		
LOCATION:	STURGEON LAKE SOUTH GAS		
DISTRICT UNIT:	BAD HEART		
BLDG/SKID:	PKG 55522		
PROCESS:	SWEET		
CODE:	ASME SEC VIII DIV 1		
SPECIFICATION:	AS PER ASME SE 797		
TECHNIQUE:	UT 1-1, REV. 1		
METHOD:	UT CONTINUOUS / A SCAN		
SURFACE COND:	PAINTED		
SURFACE TEMP:	AMBIENT		
VESSEL INFORMATION			
VESSEL #:	A 0465134		
CRN #:	L9566.23		
SERIAL #:	2001 6489 01A		
MANUFACTURER:	ALCO GAS & OIL		
DATE BUILT:	2001		
CLIENT ID / TAG:	-		
M.A.W.P.:	1459 PSI		
M.A.W.T.:	150 °F		
JOINT EFFICIENCY/RT:	RT 2		
STRESS RELIEVED:	NO		
INSULATED:	NO		
MANWAY:	NO		
VESSEL SPECIFICATIONS			
	OD	NOMINAL MATERIAL	CA
VESSEL HEAD	28"	SA-516-70	.125"
VESSEL SHELL	28"	SA-516-70	.125"
BOOT HEAD	-	-	-
BOOT SHELL	-	-	-

COMMENTS:

PROJECT:

C40290