

2018/03: NOT IN SERVICE

Equip. No. \_\_\_\_\_ Prov. Reg. No. Ⓐ 443834 C.R.N. L-5068.21 Serial No. 99C 609901 Yr. Inst. \_\_\_\_\_  
 Code/Div. ASME VIII, Div 1 Size: 24in x 336in Manufacturer: ALCO GAS & OIL Yr. Blt. 1999  
 C. Stamp: U Service: SOUR PWHT: YES Radiography: RT-1 Insulated: NO

**Design & Materials Data**

HEAD:  
 Top Mat'l. SA 516 70 Top Nom. 27.1mm Top C.A. 3.2mm  
 Btm. Mat'l. \_\_\_\_\_ Btm. Nom. \_\_\_\_\_ Btm. C.A. \_\_\_\_\_  
 CHANNEL:  
 Material: \_\_\_\_\_ Nominal: \_\_\_\_\_ C.A. \_\_\_\_\_  
 BOOT  
 Head Mat'l. \_\_\_\_\_ Head Nom. \_\_\_\_\_ Head C.A. \_\_\_\_\_  
 Shell Mat'l. \_\_\_\_\_ Shell Nom. \_\_\_\_\_ Shell C.A. \_\_\_\_\_  
 SHELL  
 Material: SA 516 70 Nominal: 28.5mm C.A. 3.2mm  
 MAWP Shell Side: 9929 kPa @ Temp. 52°C  
 MAWP Tube Side: \_\_\_\_\_ @ Temp. \_\_\_\_\_

CLIENT	CANADIAN NATURAL RESOURCES	
FACILITY	HELMET NORTH GAS PLANT LSD a-67-K/94-P-7	
ITEM	SOUR GLYCOL CONTACTOR	
BY: CB	DATE: 03/02	DWG.# 16

Canadian Natural Resources Limited GENERAL PRESSURE VESSEL INFORMATION								Job # 10.119624
District: <b>Fort St John, BC</b>				Skid No.				
Facility: <b>Helmet North Gas Plant</b>				Location (LSD): <b>a-67-K/94-P-07</b>				
Vessel Name Equipment Number: <b>Sour Glycol Contactor</b>								
Orientation: <b>Vertical</b>								
Status: <b>Out of Service</b>				Inventory				
PRESSURE VESSEL NAMEPLATE DATA								
"A" or "G" or "S" (Sask.) or BC Registration Number. <b>A0443834</b>				CRN Number <b>L-5068.21</b>				
Vessel serial number: 99C-609901				Size: 24in x 336 in				
Shell thickness: 28.5mm				Shell material: SA 516 70				
Head thickness: 27.1mm				Head material: SA 516 70				
Tube wall thickness:				Tube material:				
Tube diameter:				Tube length:				
Channel thickness:				Channel material:				
MAWP	Shell: 1440 PSI			Operating pressure	Shell:			
	Tubes:				Tubes:			
Design Temp.	Shell: 52°C			Operating temperature	Shell:			
	Tubes:				Tubes:			
X-ray: RT-1				Heat treatment: Yes				
Code parameters: ASME VIII, DIV 1				Coated: No				
Certified By: Alco Gas & Oil				Year built: 1999				
Corrosion allowance: 3.2mm				Manway: No				
PRESSURE SAFETY VALVE NAMEPLATE DATA								
PSV Tag Shell	Manufacture // Model // Serial	Set Pressure (PSI / kPa)	Capacity (scfm / usgpm)	Block Valve	Size	Location	Service by / Date	
SERVICE CONDITIONS-INDICATE ALL THAT APPLY								
Sweet X	Sour	Oil		Gas X	Water X			
Amine	LPG	Condensate X		Air	Glycol			
Other (Describe):								


**Inspection Interval** \_\_\_\_\_ **PSV Service Interval** \_\_\_\_\_

(Determined by MIC in conjunction with Chief Inspector following guidelines of Canadian Natural Resources Limited's Owner-User Inspection Program)

Reports reviewed and accepted by:

**Mechanical Integrity Coordinator** \_\_\_\_\_ **Date** \_\_\_\_\_

Fill out all forms as completely as possible. All information is important! Use back of sheets to record additional information or sketch if required.  
Copy of report to be filed by MIC at site, and copy sent to Chief Inspector

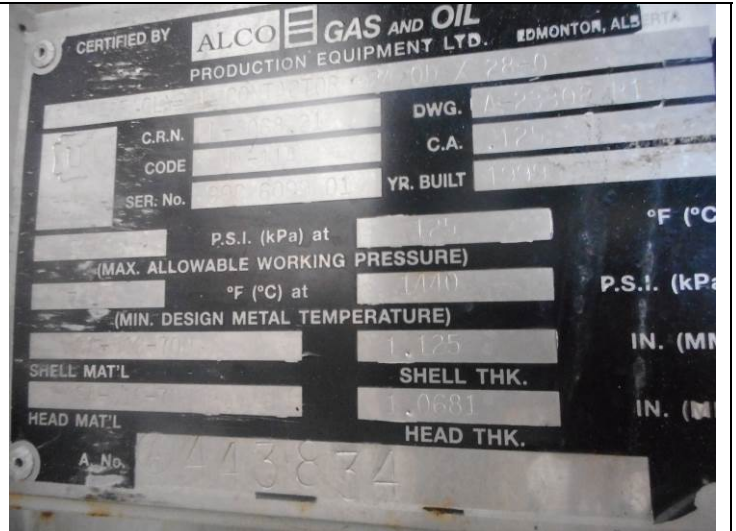
  
API 20981 / PESL 275  
Inspected By: Dellas Wiedman

Date: March. 18<sup>th</sup>, 2018

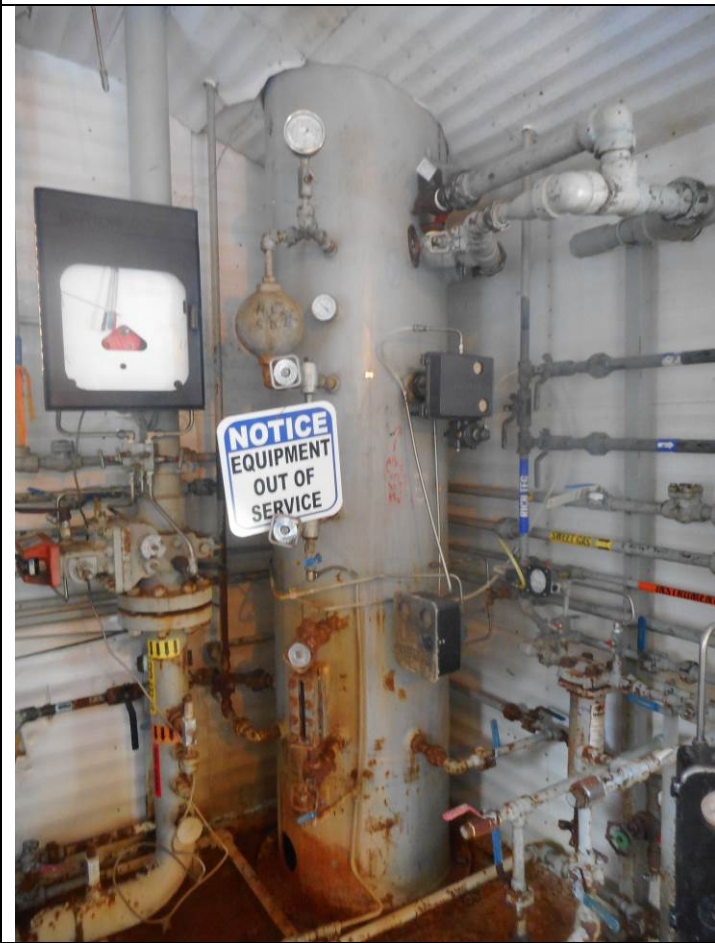
Photo Table



LSD



Data Plate



Overview