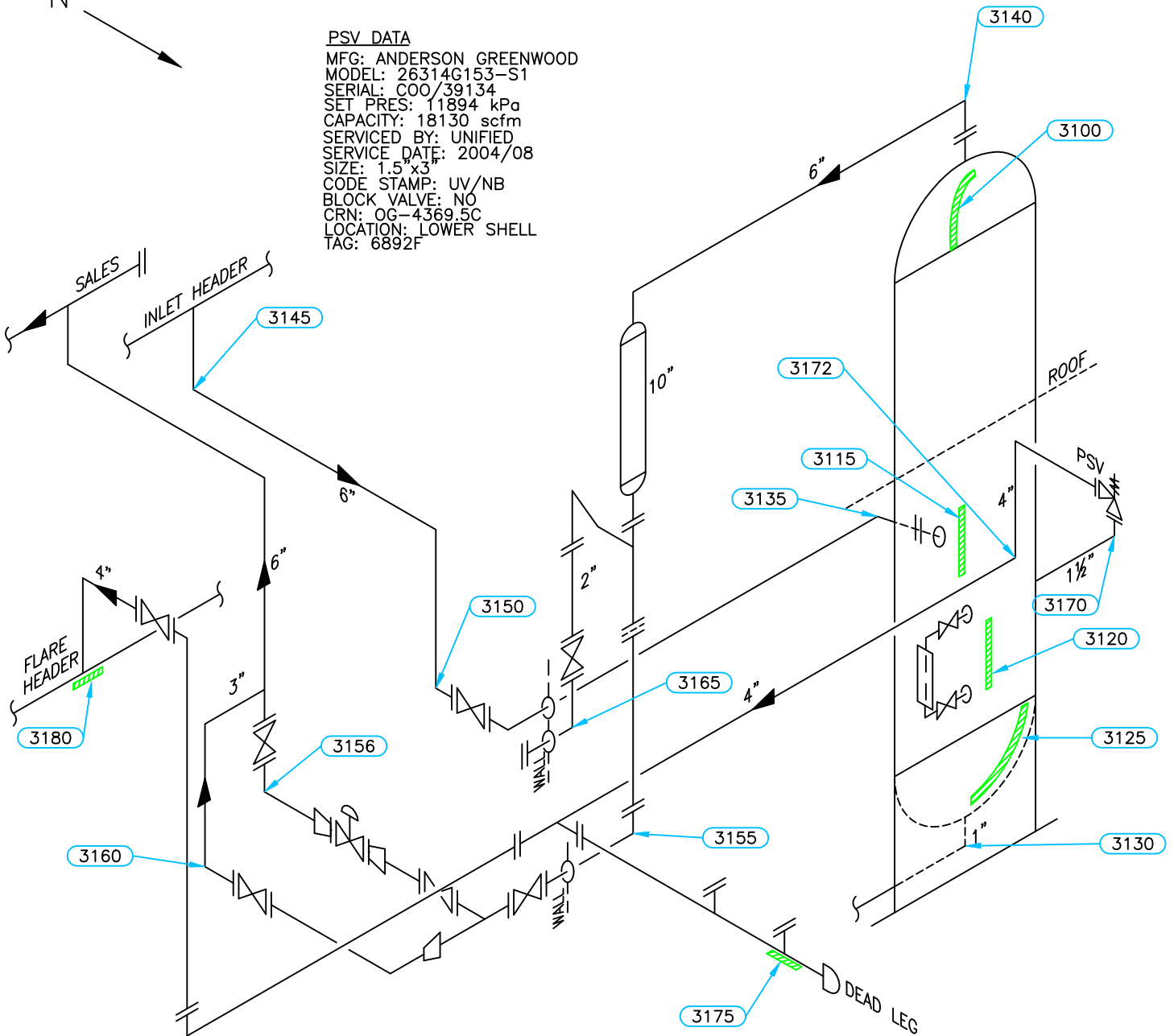


**PSV DATA**  
 MFG: ANDERSON GREENWOOD  
 MODEL: 26314G153-S1  
 SERIAL: COO/39134  
 SET PRES: 11894 kPa  
 CAPACITY: 18130 scfm  
 SERVICED BY: UNIFIED  
 SERVICE DATE: 2004/08  
 SIZE: 1.5"x3"  
 CODE STAMP: UV/NB  
 BLOCK VALVE: NO  
 CRN: OG-4369.5C  
 LOCATION: LOWER SHELL  
 TAG: 6892F



Equip. No. 3-C-300    Prov. Reg. No. Ⓐ 401435    C.R.N. K-5940.2    Serial No. 6323-20    Yr. Inst. \_\_\_\_\_  
 Code/Div. ASME, VIII DIV1    Size: 32in x 324in    Manufacturer: PRESSON MANUFACTURING    Yr. Blt. 1999  
 C. Stamp: YES    Service: SWEET    PWHT: \_\_\_\_\_    Radiography: RT-1    Insulated: NO

**Design & Materials Data**

**HEAD:**  
 Top Mat'l. SA 516 70    Top Nom. 36.5mm    Top C.A. 1.6mm  
 Btm. Mat'l. \_\_\_\_\_    Btm. Nom. \_\_\_\_\_    Btm. C.A. \_\_\_\_\_  
**CHANNEL:**  
 Material: \_\_\_\_\_    Nominal: \_\_\_\_\_    C.A. \_\_\_\_\_  
**BOOT**  
 Head Mat'l. \_\_\_\_\_    Head Nom. \_\_\_\_\_    Head C.A. \_\_\_\_\_  
 Shell Mat'l. \_\_\_\_\_    Shell Nom. \_\_\_\_\_    Shell C.A. \_\_\_\_\_  
**SHELL**  
 Material: SA 516 70    Nominal: 38.1mm    C.A. 1.6mm  
 MAWP Shell Side: 11894 kPa    @ Temp. 66°C  
 MAWP Tube Side: \_\_\_\_\_    @ Temp. \_\_\_\_\_

CLIENT	ENCANA OIL AND GAS	
FACILITY	LADY FERN GAS PLANT LSD b-47-H/94-H-1	
ITEM	DEHY CONTACTOR	
BY: CB	DATE: 10/01	DWG.# 69

# UTS DATA

**CLIENT:** ENCANA OIL & GAS  
**EQUIPMENT:** DEHY CONTACTOR  
**CRN#:** K-5940.2  
**PROV REG:** 401435  
**TESTED ON STREAM**

**FACILITY:** LADY FERN GAS PLANT  
**SERVICE:** SWEET  
**LOCATION:** b-47-H/94-H-01  
**RTD JOB #:** 2321721  
**REFER TO DRAWING:** 69

Test Point	THICKNESS DATA				Flag	Crit	C.A.	Nom.	Short Term	Long Term	Ave. mm/py	Flag Date
<b>3100</b>												
Description: TOP HEAD												
2001 10												
Min. Thick.	36.7				34.9		1.6	36.5				L
Average:	38.2								0	0		L
Analysis: 2001/10 MIN SCAN AT NOZZLE. NO ACCESS.												
<b>3115</b>												
Description: MID NORTH SHELL												
2001 10 2007 6												
Min. Thick.	38.4	38.4			36.5		1.6	38.1	0	0		L
Average:	38.7	38.7							0	0		L
Analysis:												
<b>3120</b>												
Description: LOWER SHELL @ L/L												
2001 10 2007 6												
Min. Thick.	38.4	38.4			36.5		1.6	38.1	0	0		L
Average:	38.6	38.6							0	0		L
Analysis:												
<b>3125</b>												
Description: BOTTOM HEAD												
2001 10 2007 6												
Min. Thick.	36.5	36.5			34.9		1.6	36.5	0	0		L
Average:	37	37							0	0		L
Analysis: 2001/10 MIN SCAN AT MID BAND.												
<b>3130</b>												
Description: 1" 90° NOZZLE												
2001 10 2007 6												
Min. Thick.	7.9	7.8			4.8		1.6	6.4	.02	.02		L
Average:	8.3	8.2							.02	.02		L
Analysis: 2001/10 MIN SCAN AT MID APEX.												
<b>3170</b>												
Description: 1.5" 90° NOZZLE												
2001 10 2007 6												
Min. Thick.	11.6	11.6			8.6		1.6	10.2	0	0		L
Average:	12.1	12.1							0	0		L
Analysis: 2001/10 MIN SCAN AT MID APEX.												

# UTS DATA

**CLIENT:** ENCANA OIL & GAS  
**EQUIPMENT:** DEHY CONTACTOR PIPING  
**CRN#:**  
**PROV REG:**  
**TESTED ON STREAM**

**FACILITY:** LADY FERN GAS PLANT  
**SERVICE:** SWEET  
**LOCATION:** b-47-H/94-H-01  
**RTD JOB #:** 2321721  
**REFER TO DRAWING:** 69

Test Point	THICKNESS DATA				Flag	Crit	C.A.	Nom.	Short Term	Long Term	Ave. mm/py	Flag Date
<b>3135</b>												
Description: 6" 45° ELBOW												
	2001	10	2007	6								
Min. Thick.	10.5	10.1			9.63		1.38	11	.07	.07	L	2014
Average:	11	10.6							.07	.07	L	2021
Analysis: 2007/06 MIN SCAN AT LOWER MID APEX.												
<b>3140</b>												
Description: 6" 90° ELBOW												
	2001	10	2007	6								
Min. Thick.	12	12			12.51	9.3	1.8	14.3	0	0	L	2007
Average:	12.6	12.6							0	0	L	
Analysis: 2001/10 MIN SCAN AT R.O.A.												
<b>3145</b>												
Description: 6" 90° ELBOW												
	2001	10	2007	6								
Min. Thick.	15.2	15			12.51		1.8	14.3	.04	.04	L	
Average:	15.8	15.6							.04	.04	L	
Analysis: 2001/10 MIN SCAN AT MID APEX. NO ACCESS.												
<b>3150</b>												
Description: 6" 90° ELBOW												
	2001	10	2007	6								
Min. Thick.	15.3	15.3			12.51		1.8	14.3	0	0	L	
Average:	15.7	15.7							0	0	L	
Analysis: 2001/10 MIN SCAN AT MID APEX.												
<b>3155</b>												
Description: 6" 90° ELBOW												
	2001	10	2007	6								
Min. Thick.	12.2	12.2			12.51		1.8	14.3	0	0	L	2007
Average:	12.5	12.5							0	0	L	2007
Analysis:												
<b>3156</b>												
Description: 6" 90° ELBOW												
	2001	10	2007	6								
Min. Thick.	18	18			12.51		1.8	14.3	0	0	L	
Average:	19	19							0	0	L	
Analysis: 2001/10 MIN SCAN AT MID APEX.												

# UTS DATA

**CLIENT:** ENCANA OIL & GAS  
**EQUIPMENT:** DEHY CONTACTOR PIPING  
**CRN#:**  
**PROV REG:**  
**TESTED ON STREAM**

**FACILITY:** LADY FERN GAS PLANT  
**SERVICE:** SWEET  
**LOCATION:** b-47-H/94-H-01  
**RTD JOB #:** 2321721  
**REFER TO DRAWING:** 69

Test Point	THICKNESS DATA				Flag	Crit	C.A.	Nom.	Short Term	Long Term	Ave. mm/yr	Flag Date
<b>3160</b>												
Description: 3" 90° ELBOW												
	2001	10	2007	6								
Min. Thick.	7.9		7.8		6.65		1	7.6	.02	.02		L
Average:	8.1		8						.02	.02		L
Analysis:												
<b>3165</b>												
Description: 2" 90° ELBOW												
	2001	10	2007	6								
Min. Thick.	5.2		5		4.81		.7	5.5	.04	.04		L 2012
Average:	5.4		5.2						.04	.04		L 2018
Analysis:												
<b>3172</b>												
Description: 3" 90° ELBOW												
	2001	10	2007	6								
Min. Thick.	5.1		5.1		4.81		.7	5.5	0	0		L
Average:	5.4		5.4						0	0		L
Analysis:												
<b>3175</b>												
Description: 3" BOTTOM BAND												
	2001	10	2007	6								
Min. Thick.	5.5		5.3		4.81		.7	5.5	.04	.04		L 2021
Average:	5.6		5.5						.02	.02		L 2046
Analysis:												
<b>3180</b>												
Description: 20" BOTTOM BAND ON FLARE HEADER												
	2001	10										
Min. Thick.	9.6				8.31		1.2	9.5				L
Average:	9.8								0	0		L
Analysis: NO ACCESS.												