



Mountain West Services Ltd.

Inspection Report - Devon # 5430

2906081- GLYCOL CONTACTOR

VT External

Province:	Alberta	Manway:	No
District:	NORTHERN ALBERTA	Coating:	No
Location:	KAYBOB	Inspect Date:	1/20/2010
LSD:	10-15-059-18W5	Inspection Interval:	60
CRN:	H6802.2	Next Inspection:	1/20/2015
Skid/Equipment Number:	NONE	MAWP:	1440 PSI 9928.512 KPa
Service:	SOUR	Temperature:	130 F 54.44 C
Status:	Out Of Service	Outstanding NCRs:	0

General:			
Safety Valves:			
PSV <u>NON-CODE</u> Protects the Shell Of the Vessel. Set Pressure of 0 PSI / 0 KPa. Capacity: 0SCFM / 0m3/min			
Status: Out Of Service	Examination Methods: VT	Access: External	Cleaning:
External:			
All visible shell surfaces and nozzles appear in good condition. Name plate is intact and legible. Vessel supports, foundation, electrical bonding and external coating appear good. Associated piping supports and components appear in good condition and alignment with no signs of leaks or defects present at the time of inspection. Verify PSV protection and PSV's are properly installed with any block valves locked/sealed open. Verify vessel has Alberta CRN and A# stamping or Unique Identifier, PSV has correct set pressure and MWS tagging, and was last serviced within the required interval guidelines. Assign inspection interval.			
Internal:			

Recommendations:

Inspector's Declaration: I have witnessed the above inspections and certify that they have been done in accordance with our manual and that the information is accurate. I certify that the status of the pressure equipment detailed here is:

Suitable to be returned to service: Yes

Repairs complete: N/A

Repairs are still required: No

Suggested Inspection Interval: 60

Inspector: Jay Bourne, MWS **Date:** 1/20/2010

Chief Inspector: I certify that the information on this report is true and that all inspections required by the Owner/User Quality Assurance Program# (NONE) which expires in (NONE) have been done.

Chief Inspector: Jim Damiani Cert 00037

Date: 1/27/2010

[\[Back To Start Page\]](#) [\[MtnWest.Ca\]](#)



Mountain West Services Ltd.

Pressure Vessel Inventory

2906081 - GLYCOL CONTACTOR

Shell Side

Status:	Out Of Service
LSD:	102/10-15-059-18W5
District/Unit:	NORTHERN ALBERTA
Location:	KAYBOB
CRN:	H6802.2
SKID:	NONE
Manufacturer:	PRESSON
Manufacturer Serial Number:	5361-21
Test Pressure:	PSi KPa
Year Built:	1/1/1993
Comments:	

Extended Details:

Side	Drawing Number	Service	Position	Code	Code Year	Stress Relief	Radiograph	Diameter IN	Length IN	MAWP PSI	MAWT F	Manway	Nozz Type
Shell [View Details]	TAG# V200	SOUR	Vertical	V111, DIV 1		No	RT1	20	312	1440	130	No	RF

List of Inspections:

[Report Number: 5430 - VT - External - Inspection Date:1/20/2010 - Next Inspection Date:1/20/2015](#)

List of NCRs:

List of PV Status Reports:

List of Pressure Safety Valves Protecting This Vessel:

[PSV Number: NON-CODE - Side: Shell - FOR NON-CODE SERVICE - Primary: YES](#)

Material Transfer Orders:

Pictures and Attachments



Mountain West Services Ltd.

MSC_A2906081 Contactor Nameplate.JPG



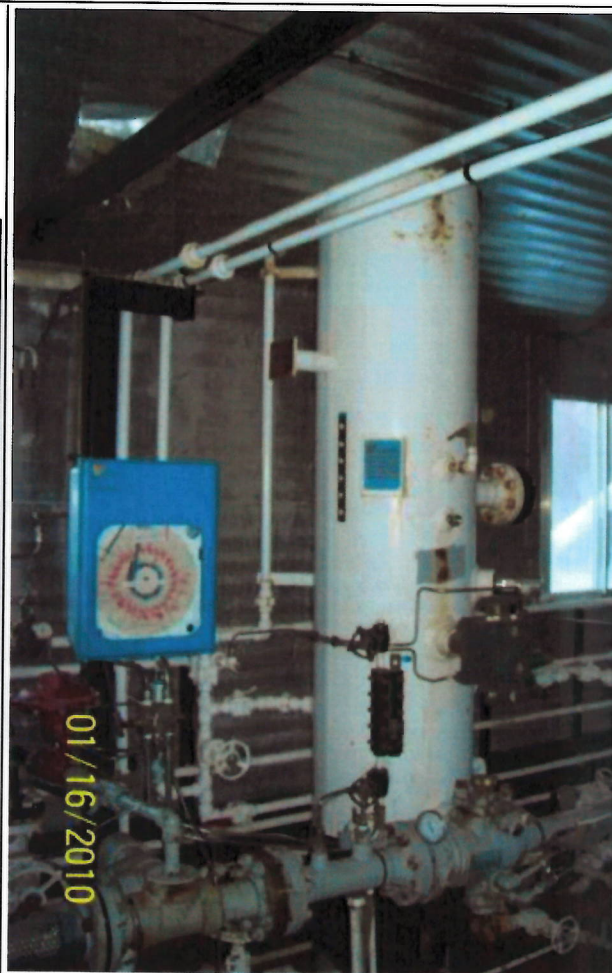
[\[Reduce Size\]](#) [\[Original Size\]](#) [\[Increase Size\]](#)

[\[Back To Start Page\]](#) [\[MtnWest.Ca\]](#)



[MSC_A2906081 Contactor Nameplate.JPG](#)

Size: 0.035 MB.



[MSC_A2906081 Contactor.JPG](#)

Size: 0.038 MB.

Satellite Images Found:

[\[Click Here For Satellite Picture\]](#)

[\[Click here for all static data\]](#)

Record Entered: 1/20/2010 Record Last Updated: 1/20/2010

[\[Back To Start Page\]](#) [\[MtnWest.Ca\]](#)



2906081 - Shell Side Detailed Data

VesselNumber	2906081	VesselSide	Shell	CompanyPartNumber	
RegistrationNumber		VesselName	GLYCOL CONTACTOR	UnitName	NORTHERN ALBERTA
UWID	102	LSD	10-15-059-18W5	Location	KAYBOB
Skid	NONE	Foreman	BRIAN LEGACY	IsComponentOf	
Fee	True	Amount	17	CRN	H6802.2
Manufacturer	PRESSON	ManufacturerSerialNumber	5361-21	TestPressureKPA	
TestPressurePSI		YearMade	1/1/1993	DateInstalled	1/1/1993
Status	Out Of Service	AccountCode	N/A	Comments	
Province		Process	SOUR	CompressorManufacturer	
CompressorModelNumber		CompressorSerialNumber		EngineManufacturer	
EngineModelNumber		EngineSerialNumber		MeterRunManufacturer	
MeterRunSerialNumber		VesselCode1		VesselCode2	
VesselCode3		VesselCode4		OperatingProvince	AB
DeleteMe	False	EnterDate	1/20/2010 1:05:32 AM	EditDate	1/20/2010 1:08:55 AM
EnteredBy	Jay	LastSubmissionBy	Jay	StatusPriorToSelling	
SwitchMWSNumberTo		TransferToClient		ReplacesTag	
ReplacesSkidTag					

General Side Extended Data

VesselNumber	2906081	Side	Shell	DrawingNumber	TAG# V200
Service	SOUR	Position	Vertical	CodeConstructedTo	ASME
Code	V111, DIV 1	CodeYear		HeadShape	Elliptical
HeadMaterialTopLeftHead	SA-516-70	TopLeftHeadOrigThicknessMM	21.336	TopLeftHeadOrigThicknessIN	0.84
IntermediateHeadMaterialGradeType	N/A	IntHeadOrigThicknessMM	0	IntHeadOrigThicknessIN	0
Bottom RightHeadShape	Elliptical	BottomRightHeadMaterialGradeType	SA-516-70	Bottom RightHeadThicknessMM	21.336
BottomRightHeadThicknessIN	0.84	HeadCorrosionAllowanceMM		HeadCorrosion AllowanceIN	
ShellMaterial	SA-516-70	ShellOriginalThicknessMM	22.225	ShellOriginalThicknessIN	0.875

ShellCorrosionAllowanceMM	1.6002	ShellCorrosionAllowanceIN	0.063	LiningOrCoated	False
LiningCoatingType	N/A	HeatTreated	No	Radiographed	RT1
DiameterM	508	DiameterIN	20	LengthM	7924.8
LengthIN	312	MaxPressureKPA	9928.512	MaxPressurePSI	1440
MaxTempCelcius	54.4444444444444	MaxTempFahrenheit	130	OperatingPressureKPA	0
OperatingPressurePSI	0	MDMTCelcius	-28.88889	MDMTFahrenheit	-20
MDDMP_PSI	1440	MDDMP_KPa	9928.512	ManwaysPresent	No
NozzleANSIRating	600	NozzleType	RF	DeleteMe	False
EnterDate	1/20/2010 1:06:19 AM	EditDate	1/20/2010 1:08:50 AM	EnteredBy	Jay
LastSubmissionBy	Jay				



Mountain West Services Ltd.

NON-CODE Detailed Data

PSVNo	NON-CODE	DistrictUnit	ALL	Location	ALL
Skid	ALL	Foreman		IsComponentOf	
UWID		LSD	00-00-000-00W0	PSVSerialNumber	NA
Make	MWS	Model	NA	ManufactureDate	
CodeStamp	NA	CRN	NA	SetPressureKPA	0
PSV_SPUNIT		SetPressurePSI	0	PSV_ISPUNIT	
BackPressureKPA		BackPressurePSI		INletSizeMM	
INletSizeIN		OutletSizeMM		OutletSizeInches	
CapacityMetric	0	PSV_CAPUNI	m3/min	CapacityImperial	0
PSV_ICAPUNI	SCFM	InletBlockValve	NA	InletBlockValveLockedOpen	NA
OutletBlockValve	NA	OutletBlockValveLockedOpen	NA	LocationOnVessel	FOR NON-CODE SERVICE
Process		PSV SERVICE TYPE		ANSIRatingInlet	
ANSIRatingOutlet		OrificeSizeMM	0	OrificeSizeIN	0
OrificeSize		Comments	NON-CODE PSV FOR VESSELS IN A NON-CODE SERVICE, OUT OF SERVICE OR STOCK.	PSV_SERTIM	0
Status	In Service	StatusPriorToSelling		DeleteMe	False
EnterDate	1/28/2001 7:03:41 PM	EditDate	11/20/2006 3:50:27 PM	EnteredBy	Admin
LastSubmissionBy	John	CompanyPartNumber		SwitchMWSNumberTo	
TransferToClient		temp		ReplacesTag	
ReplacesSkidTag					