

**Canadian Natural Resources Limited
GENERAL PRESSURE VESSEL INFORMATION**

10.114850

District: Swan hills , AB	Skid No.
Facility: Simonette Gas Gathering	Location (LSD): 07-04-63-26W5M
Vessel Name Equipment Number: Glycol Contactor	
Orientation: Vertical	
Status: Out of service	Inventory Inspection

PRESSURE VESSEL NAMEPLATE DATA

"A" or "G" or "S" (Sask.) or BC Registration Number. A2910996		CRN Number: M 2083.2	
Vessel serial number: 93C 5041-05A		Size: 16 in x 28 ft	
Shell thickness: 1.031 in		Shell material: SA 333-6	
Head thickness: 0.821 in		Head material: SA 516 70	
Tube wall thickness:		Tube material:	
Tube diameter:		Tube length:	
Channel thickness:		Channel material:	
Design pressure	Shell: 1440 PSI	Operating pressure	Shell:
	Tubes:		Tubes:
Design Temp.	Shell: 100 °F	Operating temperature	Shell:
	Tubes:		Tubes:
X-ray: RT-2		Heat treatment: No	
Code parameters: ASME VIII, Div 1		Coated: Nil	
Manufacturer: Alco Gas & Oil		Year built: 1994	
Corrosion allowance: .0625		Manway: No	

PRESSURE SAFETY VALVE NAMEPLATE DATA

PSV Tag	Manufacture / Model / Serial	Set Pressure (PSI / kPa)	Capacity (scfm / usgpm)	Size	Block Valve	Location	Service by / Date
5650 F	Mercer // 8112421117R/ 15149	1440 PSI	4956 Scfm	1 X 1	NO	Inlet Piping	RMV 09/2006

SERVICE CONDITIONS-INDICATE ALL THAT APPLY

Sweet X	Sour	Oil	Gas X	Water X
Amine	LPG	Condensate	Air	Glycol

Other (Describe):

Inspection Interval

PSV Service Interval

(Determined by MIC in conjunction with Chief Inspector following guidelines of Canadian Natural Resources Limited Owner-User Inspection Program)
Reports reviewed and accepted by:

Mechanical Integrity Coordinator

Date Apr 4/2015

Fill out all forms as completely as possible. All information is important! Use back of sheets to record additional information or sketch if required.
Copy of report to be filed by MIC at site, and copy sent to Chief Inspector

API 20981 / PESL 275

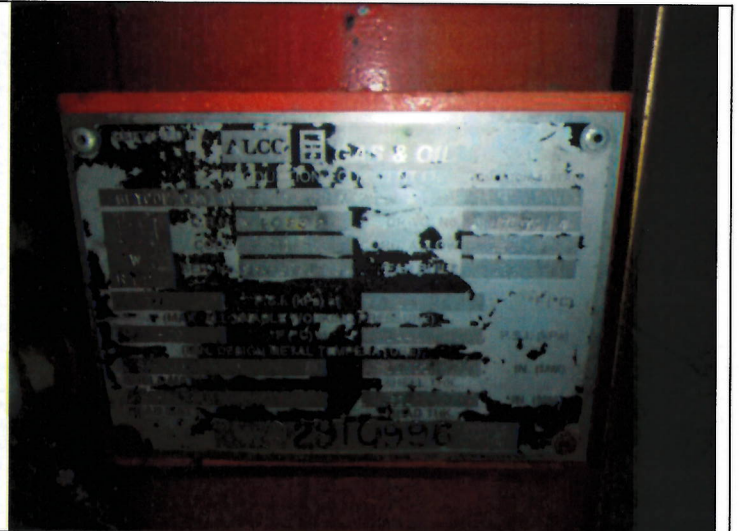
Inspected By: Dellas Wiedman
Dustin Kowal

Date: Oct 24, 2014

Photo Table



Lsd Sign



Vessel Data Plate



Vessel Overview



Base