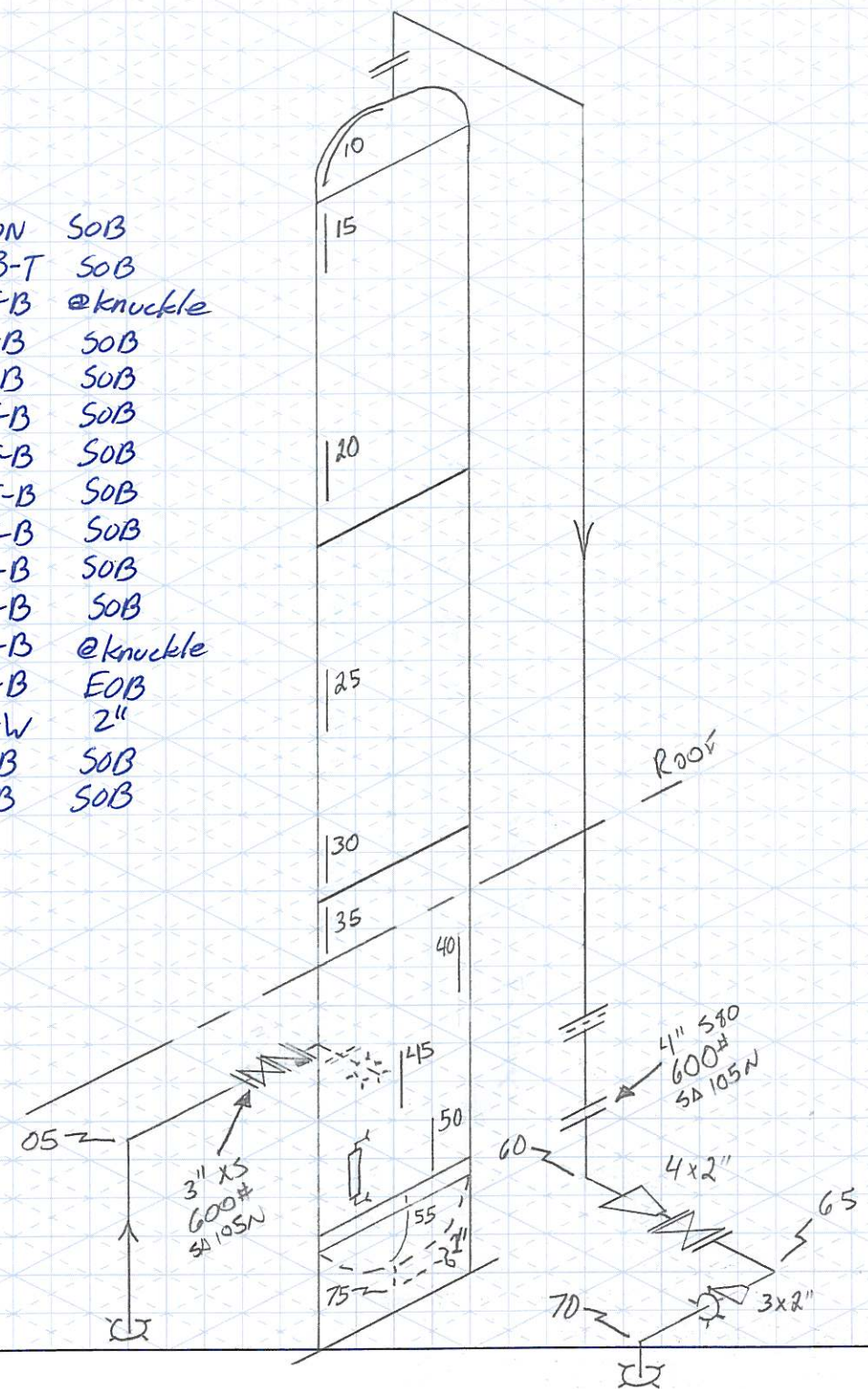


TML	DESCRIPTION	SOB
05	VO3IE B-T	SOB
10	VTWHAR T-B	@knuckle
15	VUWSAR T-B	SOB
20	VUWSAR T-B	SOB
25	VMWSAR T-B	SOB
30	VMWSAR T-B	SOB
35	VMWSAR T-B	SOB
40	VMES T-B	SOB
45	VOIN T-B	SOB
50	VLES T-B	SOB
55	VB5H T-B	@knuckle
60	VO40E T-B	EOB
65	H020E S-W	2"
70	VO30E T-B	SOB
75	VO1DN T-B	SOB



GLYCOL CONTACTOR

CUSTOMER: CARL FACILITY: DANCING LAKE LSD: 03-17-069-26W4

P & ID: \_\_\_\_\_ DRAWN BY: Wes F DATE: 26 Mar 09 DRAWING NO. 01

VESSEL INFORMATION:

Equip. No. \_\_\_\_\_ Pro. Reg. No (A) A 2637022 C.R.N. H9347.21 Serial No PE 3558 Yr. Inst. \_\_\_\_\_

Code/Div. \_\_\_\_\_ Size: 20" ID / 60 X \_\_\_\_\_ Manufacturer: PENFABCO Yr. Blt. 1991

C. Stamp \_\_\_\_\_ Service: SWEET PWHT: no J.E.: \_\_\_\_\_ Radiography: RT-2 Insulated: no

HEAD:

Top Mat'l \_\_\_\_\_ Top C.A. \_\_\_\_\_ Material \_\_\_\_\_ Nominal \_\_\_\_\_ C.A. \_\_\_\_\_

Btm Mat'l \_\_\_\_\_ Btm C.A. \_\_\_\_\_

BOOT:

Head Mat'l \_\_\_\_\_ Head Nom \_\_\_\_\_ Top Mat'l \_\_\_\_\_ Top Nom. \_\_\_\_\_ Top C.A. \_\_\_\_\_

Shell Mat'l \_\_\_\_\_ Shell Nom. \_\_\_\_\_ Btm Mat'l \_\_\_\_\_ Btm Nom. \_\_\_\_\_ Btm C.A. \_\_\_\_\_

MAWP Shell side: 1440 PSI @ Temp. 100°F MAWP Tube Side: \_\_\_\_\_ @ Temp. \_\_\_\_\_

PIPING INFORMATION:

Circuit. No. \_\_\_\_\_ Line No. (s) (PLEASE PUT LINE NUMBERS ON APPLICABLE LINES ON THE DRAWING) \_\_\_\_\_

Piping Class \_\_\_\_\_ Yr. Blt. \_\_\_\_\_

MAWP: \_\_\_\_\_ @ Temp. \_\_\_\_\_ Size & Schedule of Piping (PLEASE PUT APPROPRIATE SIZES AND SCHEDULES OF PIPING ON DRAWING)