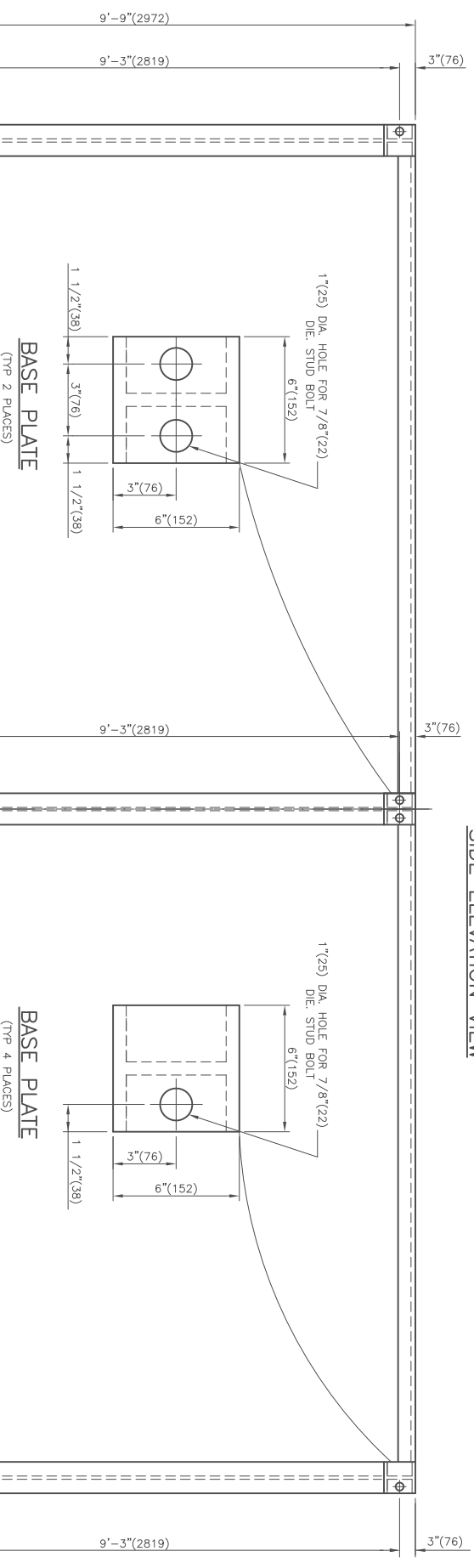
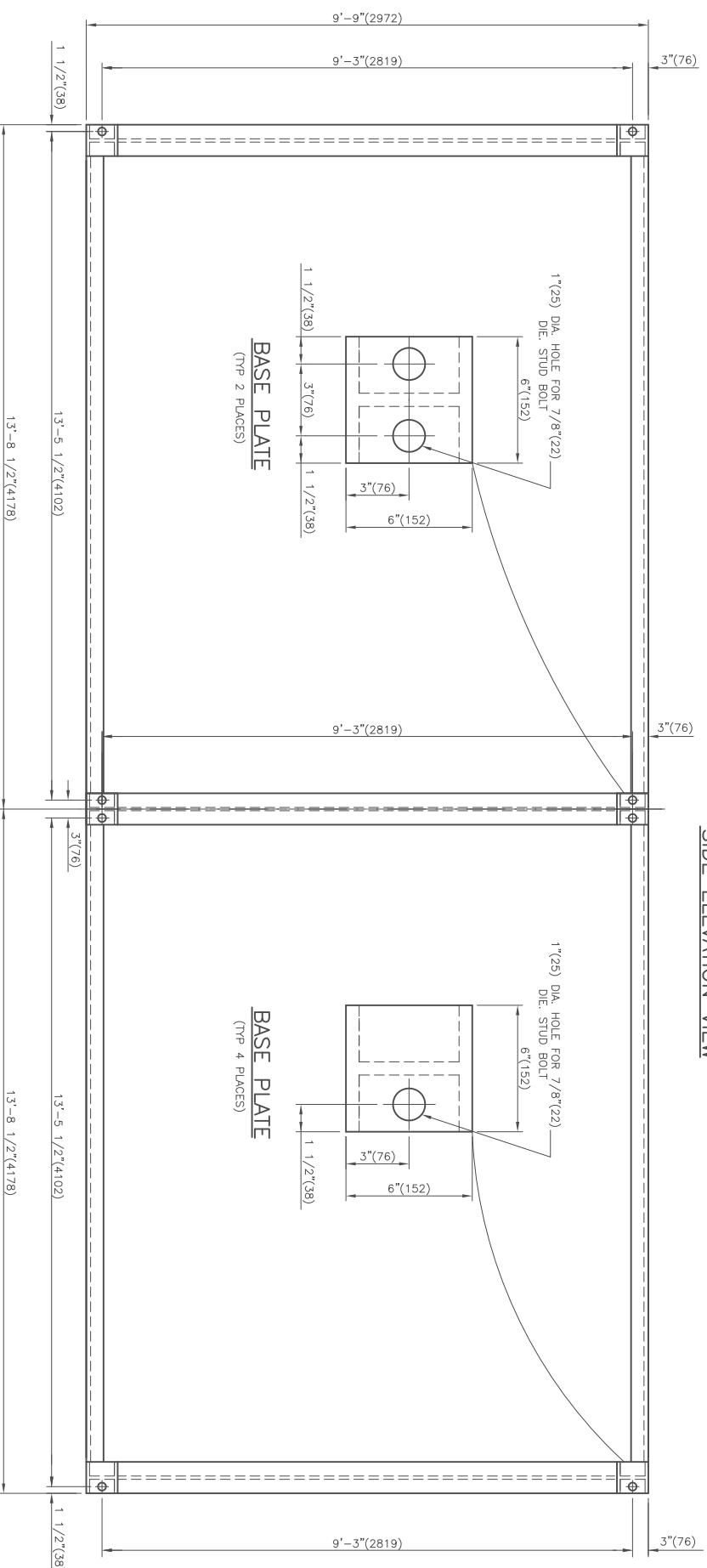


SIDE ELEVATION VIEW

FRONT VIEW
(LADDER & PLATFORM OMITTED FOR CLARITY)



ONE UNIT REQUIRED

OUTLINE DRAWING

NOZZLE / CONNECTION SCHEDULE		SERVICE	
NO. 1	NOZZLE	INLET	OUTLET
REF.	QTY.	SIZE	RATING
NO. 1/A/B	2	6"	300 BRNN
NO. 2/A/B	2	6"	300 BRNN
NO. 3/A/B	2	6"	300 BRNN
NO. 4/A/B	2	6"	300 BRNN
		VENT / BRNN C/W BLND	

CONSTRUCTION / GENERAL NOTES

1. SURFACE PREP- SSP-SPR GALVANIZED GRATING

2. FINISH- ONE COAT OF EPOXY PHENOLIC PRIMER INTERMEDIARY 228 (3.0-5.0 mils DFT)

3. COLOR- WARM GREY

4. SURFACE PREP- SSP-SPR COMMERCIAL GRADE

5. FINISH- ONE COAT OF EPOXY PHENOLIC PRIMER INTERMEDIARY 228 (3.0-5.0 mils DFT)

6. COLOR- WARM GREY

7. KICK PLATES, HANDRAILS, LADDERS - SAFETY YELLOW

8. NO PAINT ON GALVANIZED GRATING

CUSTOMER: CANADIAN NATURAL RESOURCES LTD.

PRODUCT: GYCOL COOLER

9515 - 48 TH STREET S.E.
CALGARY, ALBERTA T2C 2R1

CALHEX INDUSTRIES LTD.

ENGINEERING RECORDS

DRAWING BR:	D.K.JADONK	DATE:	JULY 19/16
CHECKED BR:	D.K.JADONK	DATE:	JULY 19/16
APPROVED BR:	M.SOUJKA	SCALE:	N.T.S.

S.D. NO.:
DWG. NO.:
16-1139-0
1