

THIS DRAWING IS THE EXCLUSIVE PROPERTY OF NEXT COMPRESSION, AND CANNOT BE REPRODUCED OR DISTRIBUTED WITHOUT THE EXPRESS WRITTEN PERMISSION OF NEXT COMPRESSION.

BU-830

BUILDING SPECIFICATIONS

DESIGN NOTES

THE BUILDING IS DESIGNED BASED ON LSD/LOCATION, SNOW AND SEISMIC CONDITIONS.

1. ALL BOLTS, SCREWS, ETC. USED FOR FASTENING ALUMINUM TO ALUMINUM AND ALUMINUM TO STEEL SHALL BE AUSTENITIC STAINLESS STEEL OR CADMIUM PLATED.

GENERAL NOTES

☒

 DENOTES WHICH ARE APPLICABLE TO THIS JOB WHEN CHECKED

BUILDING TYPE

☒ SELF FRAMING (SHED)

☐ SELF FRAMING (GABLE)

☐ RIGID FRAMING (GABLE)

☒ P.ENG. STAMPED BUILDING DRAWING

ERECTION

☐ ON-SITE BY BUILDING MANUFACTURER

☒ AT FABRICATION SHOP BY BUILDING MANUFACTURER

ROOF SLOPE

☒ 1:12

☐ 2:12

☐ 3:12

☐ 4:12

BUILDING SIZE

LENGTH: 13 FT 0 IN

WIDTH: 10 FT 0 IN

EAVE HEIGHT: 10 FT 0 IN

PEAK HEIGHT:

MATERIAL - WALL & ROOF PANELS (MIN. 22 GA.)

☐ GALVANIZED

☐ ALUMINUM

☒ PRE-PAINTED STEEL

COLOUR:

WALLS: TBD

SPEC. NO.: TBD

ROOF: TBD

SPEC. NO.: TBD

DOORS: TBD

SPEC. NO.: TBD

TRIM: TBD

SPEC. NO.: TBD

TRANSLUCENT ROOF PANELS:

WALLS: N/A

COLOUR: N/A

QTY: 0

REMOVABLE ROOF PANELS:

SIZE: N/A

COLOUR: N/A

QTY: 0

LINING

☐ 24 GA. FLUTED ALUMINUM

☒ 24 GA. FLUTED ALUMINUM - WHITE

☐ 22 GA. PERFORATED ALUMINUM - WHITE

INSULATION (FIBERGLASS)

WALLS: ☒ R-12

☐ R-20

☐ 3 LB/CU.FT. DENSITY SOUND

☐ OTHER: __

ROOF: ☐ R-12

☒ R-20

☐ 3 LB/CU.FT. DENSITY SOUND

☐ OTHER: __

POLYETHYLENE VAPOUR BARRIER

☐ 2 MIL.

☐ 4 MIL.

☒ 6 MIL.

DOORS - 20 GA. METAL, INSULATED (NORMAL SIZES)

☒ (1x) 3x7 SINGLE

☒ WS

☒ WGW

☒ PH

☒ LS

☒ DC

☒ SF

☒ CC

☒ CP

☒ (1x) 6x7 DOUBLE

☒ WS

☒ WGW

☒ PH

☒ LS

☒ DC

☒ SF

☒ CC

☒ CP

☐ WGWBD

WS - WEATHER STRIPPING

LS - LOCKSET

CC - CHECKCHAIN

WGW - WIRE GLAZED WINDOW

DC - DOOR CLOSURE

CP - CANOPY

PH - PANIC HARDWARE

SF - STEEL FRAME

WGWBD - WIRE GLAZED IN WINDOW BOTH DOORS

ROLL-UP DOORS/SECTIONAL O/H DOORS/SLIDING DOORS

☐ STEEL ROLL-UP DOOR, QTY:

☐ DIRECT DRIVE CHAIN HOIST

☐ STEEL HINGED ACCESS DOOR, QTY:

☐ GEARED DRIVE CHAIN HOIST

☐ STEEL BOLTED ACCESS DOOR, QTY:

☐ MANUAL OPERATED CHAIN HOIST

☐ TRANSOM, QTY:

☐ INSULATED

WINDOWS - HORIZONTAL SLIDING c/w SCREEN (SINGLE GLAZED)

☐ 40x40 QTY:

☐ 40x50 QTY:

☐ WIRE GLAZED QTY:

WALL LOUVERS (NOMINAL SIZES)

☒ STAMPED LOUVER c/w SLIDE CLOSURE AND SCREEN, QTY/SIZE:

☒ ADJUSTABLE LOUVER c/w MANUAL CONTROL AND SCREEN, QTY/SIZE: (1) 18"x32"

☐ FLASHED OPENINGS FOR HEATER VENTS

RIDGE VENTILATOR

☐ RIDGE VENTILATOR c/w SLIDE CLOSURE AND BIRDSCREEN

☐ RIDGE VENTILATOR (ACOUSTICAL) c/w MANUAL CLOSURE AND BIRDSCREEN

☐ LENGTH: FULL

EAVESTROUGH, DOWNSPOUT, & ICE RAKES

☒ EAVESTROUGH

☒ DOWNSPOUT (1x)

☒ ICE RAKES

MATERIAL CODE:

F8301

EF-170/ EF-171

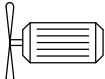
BUILDING FANS

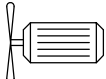
12" FAN

1200 CFM

XP / 120VAC / 1PH / 60HZ / CSA

WIRING BY OTHERS





EF-170

EF-171

MATERIAL CODE:

F8301

BH-172

BUILDING HEATER

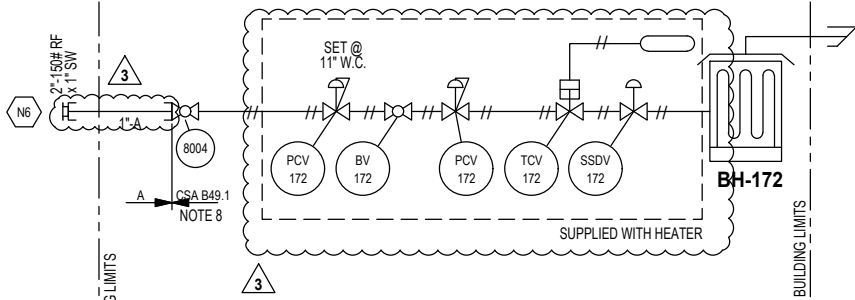
CATADYNE MK2448-XXXXX

RATED: XX,000 BTU/HR

INT HOOD, SAFETY SHUT OFF VALVE,

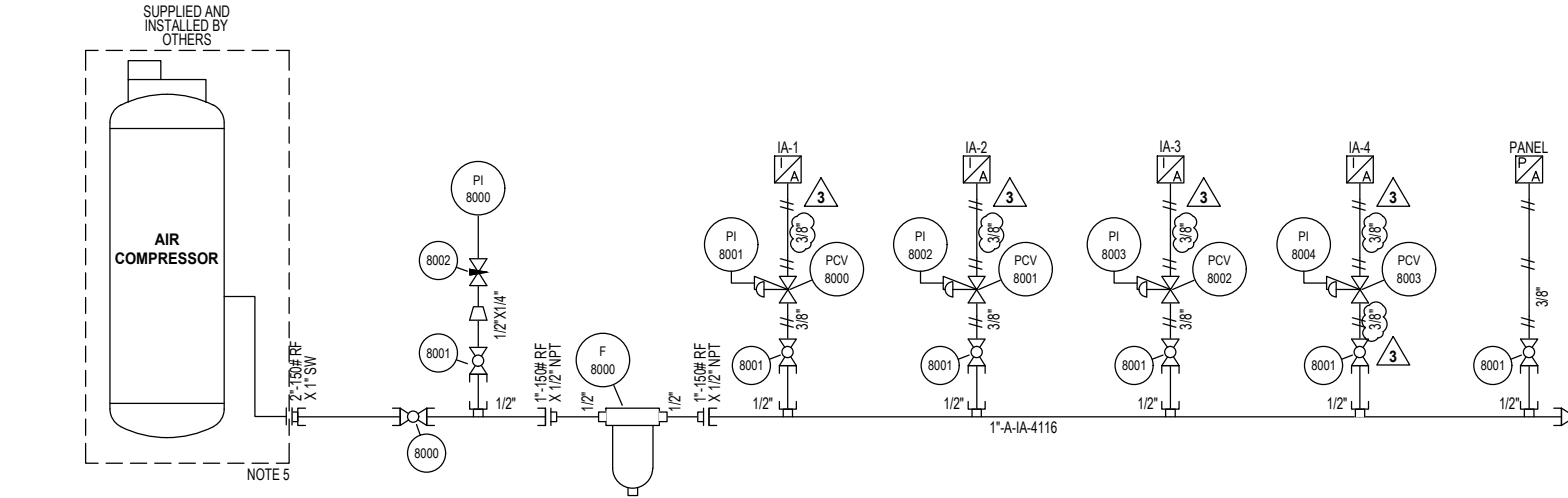
TEMP CONTROL VALVE


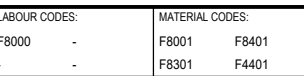
XP / 120VAC / 1PH / 60Hz / CSA STARTER



MATERIAL CODE:

F8401



SKID EDGE CONNECTIONS			REVISIONS					NEXT COMPRESSION				BUILDING UTILITIES			
TAG	DESCRIPTION	RATING	REV	DESCRIPTION	DATE	BY	APPR					PROJECT: CANADIAN NATURAL RESOURCES LTD			
N5	INSTRUMENT AIR	2"-150# RF	A	ISSUED FOR HAZOP	3/8/23	RR	KH					VRU ROFLO 60 HP ELECTRIC			
N6	HEATER GAS SUPPLY	2"-150# RF	B	ISSUED FOR APPROVAL	3/30/23	RR	KH					SMITH, ALBERTA-LSD: TBA			
			0	ISSUED FOR CONSTRUCTION	5/26/23	RR	KH					ENG. BY: K.HUARTSON PROJECT NO: 101121/2/3/4/5/6/7			
			1	REPLACED ELEC. HEATERS, UPDATED CODE, ADDED PCV'S & IA-4	6/21/23	RR	KH					DRAWN BY: R.ROVETO CLIENT REF. NO: -			
			2	ADDED NOTES, SPEC BREAK & INSTRUMENT AIR COMPRESSOR	8/11/23	RR	KH					DRAWN DATE (MM/DD/YY): 02/07/23 SHEET: 1 OF 1			
			3	ADDED/UPDATED TUBING SIZES, UPDATED HEATER CONTENT	9/29/23	RR	KH					DRAWING NO: 101121-8000 REV: 3			