

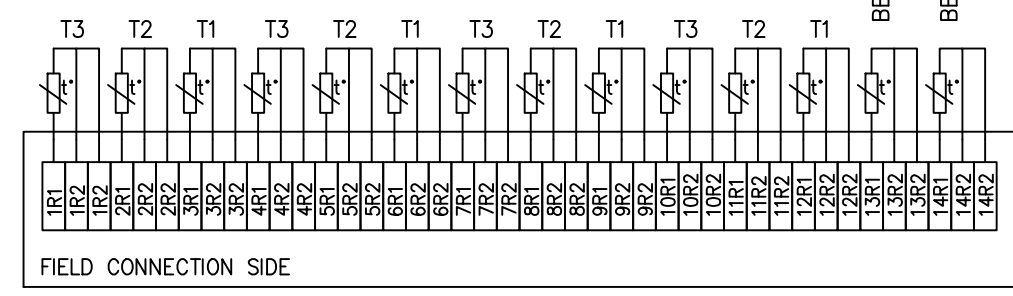
We reserve all rights in this document and in the information contained therein. Reproduction, use or disclosure to third parties without express authority is strictly forbidden.
© ABB ELECTRICAL MACHINES LTD.

Symbols for roughness according to ISO 1302,
9ADA 431

General tolerances for linear and angular dimensions and geometrical tolerances: ISO 2768 -mK
Referential standards 9ADA 422, DIN 7168T.1

TERMINAL BOX FOR ACCESSORIES

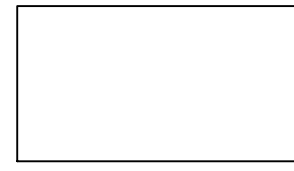
NOTE! PT100 DETECTORS
TEST CURRENT MAX. 2 mA



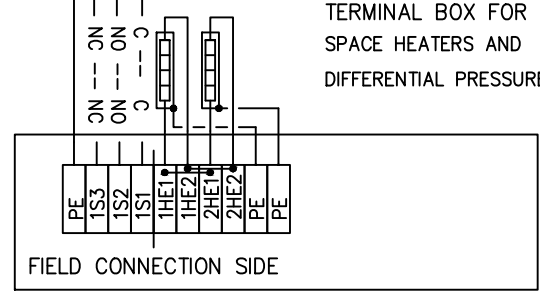
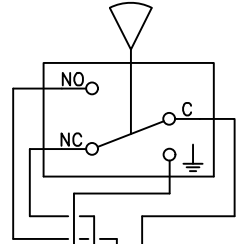
FIELD CONNECTION SIDE

TERMINAL SIZE 2.5 mm²
 NO: 1R1...9R2, STATOR, RTD'S PT100, ALARM: 130°C, TRIP: 160°C
 NO: 10R1...12R2, STATOR, RTD'S PT100, ALARM: 130°C, TRIP: 160°C, SPARE, API 541
 NO: 13R1...14R2, BEARING, RTD'S PT100, ALARM: 85°C, TRIP: 90°C

TERMINAL BOX FOR PROXIMITY TRANSDUCERS



DIFFERENTIAL PRESSURE SWITCH, Ex i FILTER

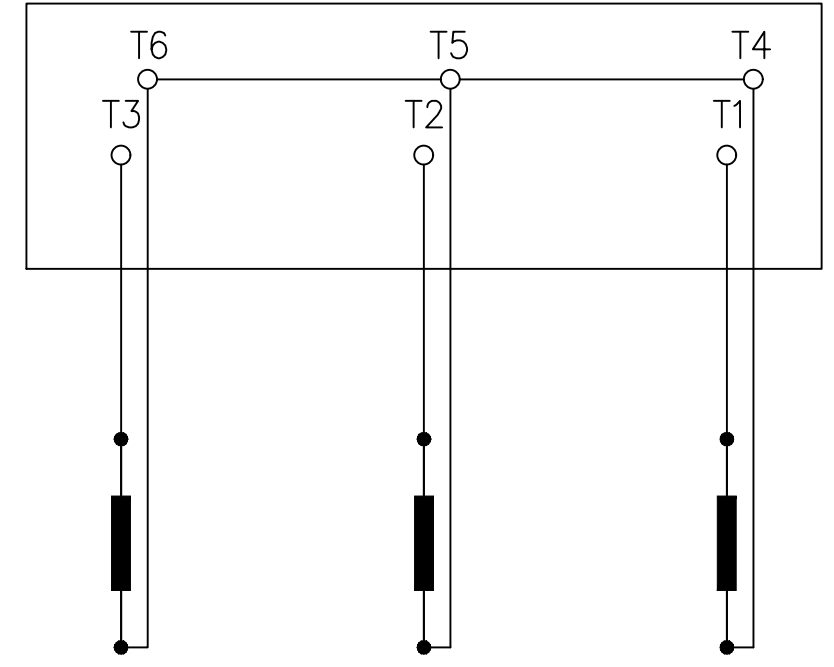


TERMINAL BOX FOR SPACE HEATERS AND DIFFERENTIAL PRESSURE SWITCH

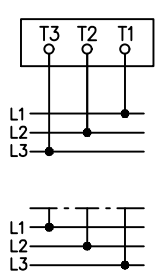
TERMINAL SIZE 2.5 mm²
 NO: 1HE1...2HE2, SPACE HEATERS, 120V 400W
 NO: 1S1...1S3, DIFFERENTIAL PRESSURE SWITCH, Ex i

ALL Ex i MARKED TERMINALS SHALL BE CONNECTED TO INTRINSICALLY SAFE CIRCUIT

MAIN TERMINAL BOX



CONNECTION OF TERMINALS Y-CONNECTION



DIRECTION OF ROTATION WITH NORMAL PHASE SEQUENCE.

DIRECTION OF ROTATION WITH REVERSED PHASE SEQUENCE.

PERMITTED DIRECTION OF ROTATION IS MARKED ON THE MOTOR.

Enerflex Ltd. VENDOR DRAWING/DOCUMENT REVIEW CODES	
1	<input checked="" type="checkbox"/> Reviewed and accepted with no comment.
2	<input type="checkbox"/> Reviewed and accepted with comment. Work may proceed subject to incorporation of comments.
3	<input type="checkbox"/> Revise and resubmit. Work will NOT proceed.
4	<input type="checkbox"/> Review not required (for information only).
Reviewed only as to general conformity with the design concept and specifications provided. Sole responsibility for correct design, detail and dimensions shall remain with the party submitting the document.	
Checked By dwallace	Date 2/14/2019
Project No. E104026	

Customer Reference 5: 02C 7.4_1750HP,6P,4kV_MSSappvd		Our Reference 2800IY200	Protection/Cooling
Additional Information Class I Division 2 Group D T3			Poles 6
Prepared 2019-01-24 GRACE ZHAO	Title CONNECTION DIAGRAM		Scale
Reviewed 2019-01-24 LEON HUANG	Responsible Department		Language en
Approved 2019-01-24 KENNY KE	Original Dwg		
Distribution 31	Functional Code AY	Order No.	Weight
Type AMI 500L6W BSFNS		Mounting	Size A3
Document No. 3GYB3898259		Revision A	Sheet 1/1

ABB ELECTRICAL MACHINES LTD.

ABBA3BF1

AutoCAD