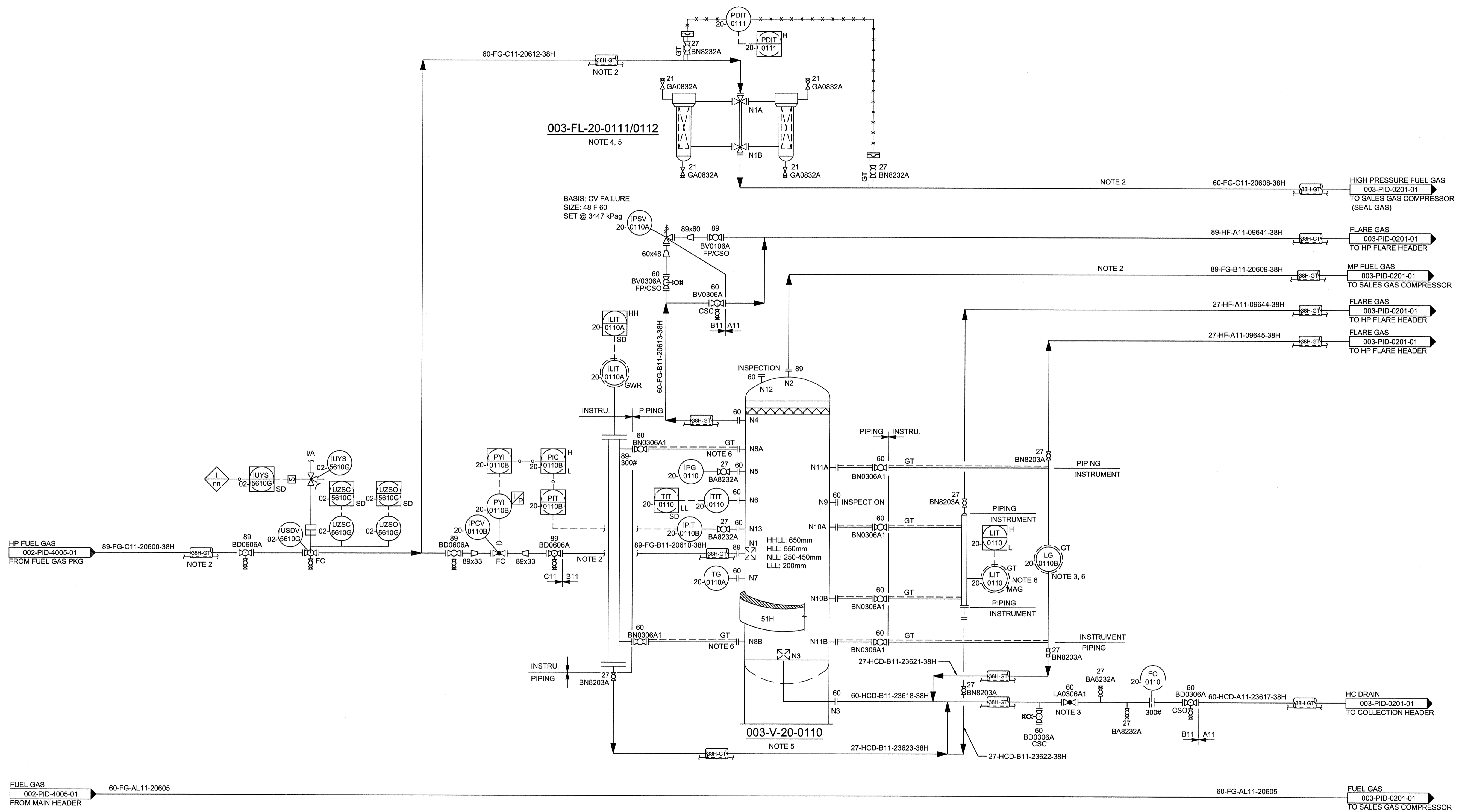


**003-V-20-0110**  
**TURBINE FUEL GAS SCRUBBER**  
SIZE: 710 mm ID x 2025 mm S/S  
DESIGN P & T: 3447 kPag @ 93/-29°C  
MDMT: -29°C  
INSULATION: YES (NOTE 5)  
TRIM: FG-B11-20614

**003-FL-20-0111/0112 (NOTE 4)**  
**SEAL GAS FILTERS**  
SIZE: NOTE 4  
DESIGN P & T: 7550 kPag @ 93/-29°C  
MDMT: -29°C  
INSULATION: YES (NOTE 5)

**NOTES:**

- 1. ALL INSTRUMENT TAG NUMBERS ON THIS SHEET SHALL FOLLOW ITS ASSOCIATED EQUIPMENT TAG NUMBERS, UNLESS OTHERWISE INDICATED (EX. PG-1010 ON EQUIPMENT 003-V-00-1010, FULL INSTRUMENT TAG NUMBER SHALL BE 003-PG-00-1010)
- 2. MINIMUM 35°C HOLD-UP TEMPERATURE
- 3. MANUAL DRAIN AND LG-20-0110B SHOULD BE VISIBLE FROM VALVE.
- 4. DUPLEX FILTER SINGEL BLOCK
- 5. HEAT INSULATION AND GLYCOL TRACING.
- 6. GLYCOL TRACING OF LEVEL DETECTION FOR FREEZE PROTECTION IN THE EVENT OF WATER CARRY-OVER.



WP REF. NO. 003-PID-0201-03

**WorleyParsons** resources & energy  
"This drawing is prepared solely for the use of the contractual customer of WorleyParsons Canada Services Ltd. and WorleyParsons Canada Services Ltd. assumes no liability to any other party for any representation contained in this drawing."

DWG. NO.	REFERENCE DRAWINGS	DEVON PROJECT	REV	REVISIONS	DATE (yy.mm.dd)	BY	CHK'D	APP'D	OWNR APP'D
01-00348.1			1	CNRL LOGO ADDED, RE-IFC	14.12.05	ERS	CH	MTV	
01-00348.1			0	ISSUED FOR CONSTRUCTION	14.02.18	EW	JM	CH	

**ENGINEER AND PERMIT STAMPS**

**PERMIT TO PRACTICE**  
WorleyParsons Canada Services Ltd.  
Signature: *[Signature]*  
Date: 2014-12-1  
**PERMIT NUMBER: P 0725**  
The Association of Professional Engineers, Geologists and Geophysicists of Alberta

DESIGNED	AO	13.11.28
DRAWN	LL	13.12.05
CHECKED	JM	13.12.06
PROCESS CK.	AO	13.12.06
MECH. CK.		
STRUCT. CK.		
ELECT. CK.		
OWNER APP.		
OWNER APP.		

**Canadian Natural**  
**CNRL FERRIER**  
DEEP CUT  
P&ID - SALES GAS COMPRESSOR FUEL GAS SKID  
LSD 11-2-39-8 W5M

CNWL JOB NO: 14-00120    SCALE: NTS    DWG. NO.: FER-003.1102039085-A-PID-0201-03    DEVON PROJ.: 01-00348.1    1