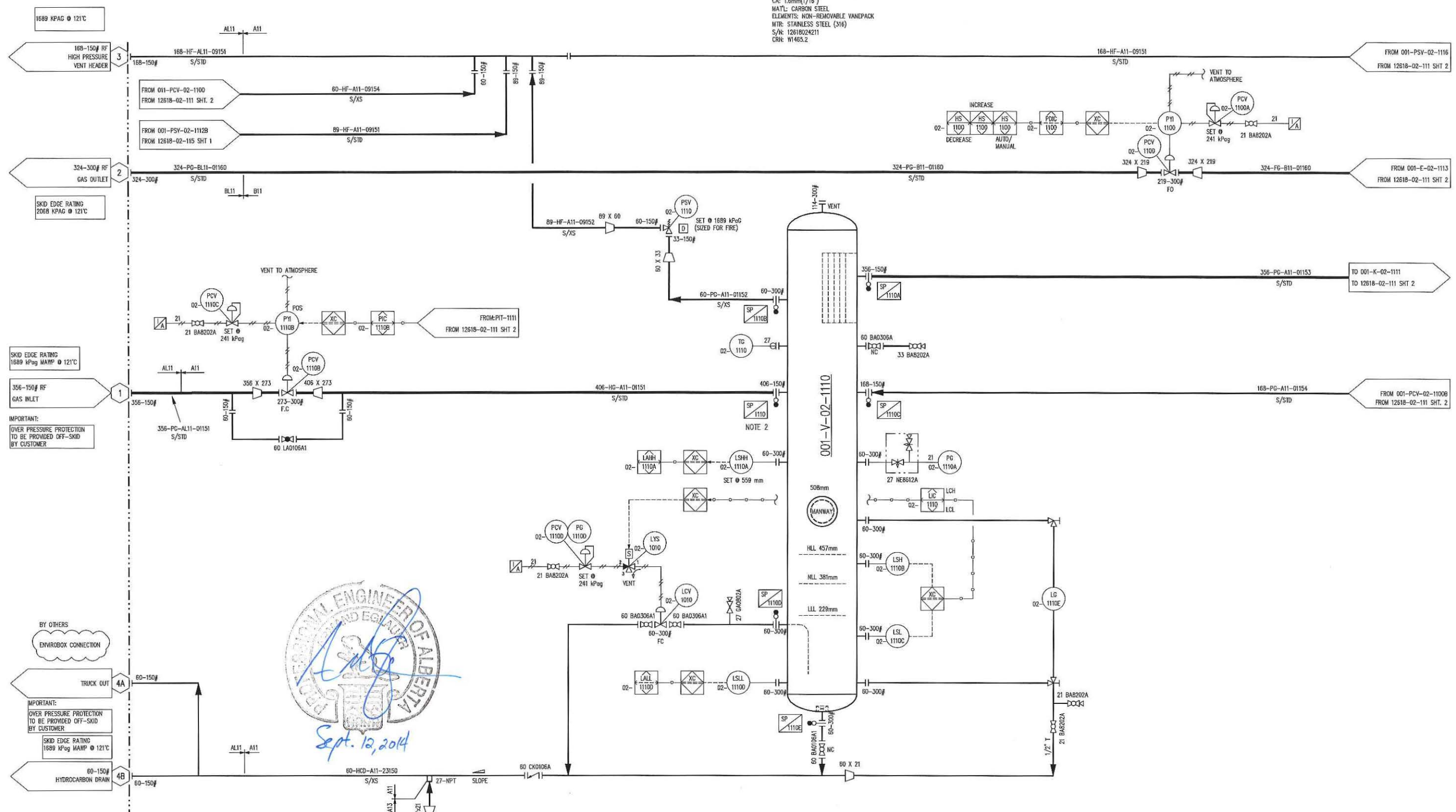


001-PK-02-1100
BATTERY GAS
COMPRESSOR PACKAGE #2

001-V-02-1110
SUCTION SCRUBBER

MFG: EFX
SIZE: 1219mm(48") OD X 2591mm(102") S/S
MAWP: 1689kPag(245 PSIG) @ 121°C(250°F)
MDMT: -29°C(-20°F) @ 1689kPag(245 PSIG)
CA: 1.6mm(1/16")
MATL: CARBON STEEL
ELEMENTS: NON-REMOVABLE VANEPACK
NTR: STAINLESS STEEL (316)
S/A: 12618024211
CRN: W1463.2



SKID EDGE RATING
1689 kPag MAWP @ 121°C

356-150# RF
GAS INLET

IMPORTANT:
OVER PRESSURE PROTECTION
TO BE PROVIDED OFF-SKID
BY CUSTOMER

BY OTHERS
ENVIROBOX CONNECTION

TRUCK OUT

IMPORTANT:
OVER PRESSURE PROTECTION
TO BE PROVIDED OFF-SKID
BY CUSTOMER

SKID EDGE RATING
1689 kPag MAWP @ 121°C

60-150#
HYDROCARBON DRAIN

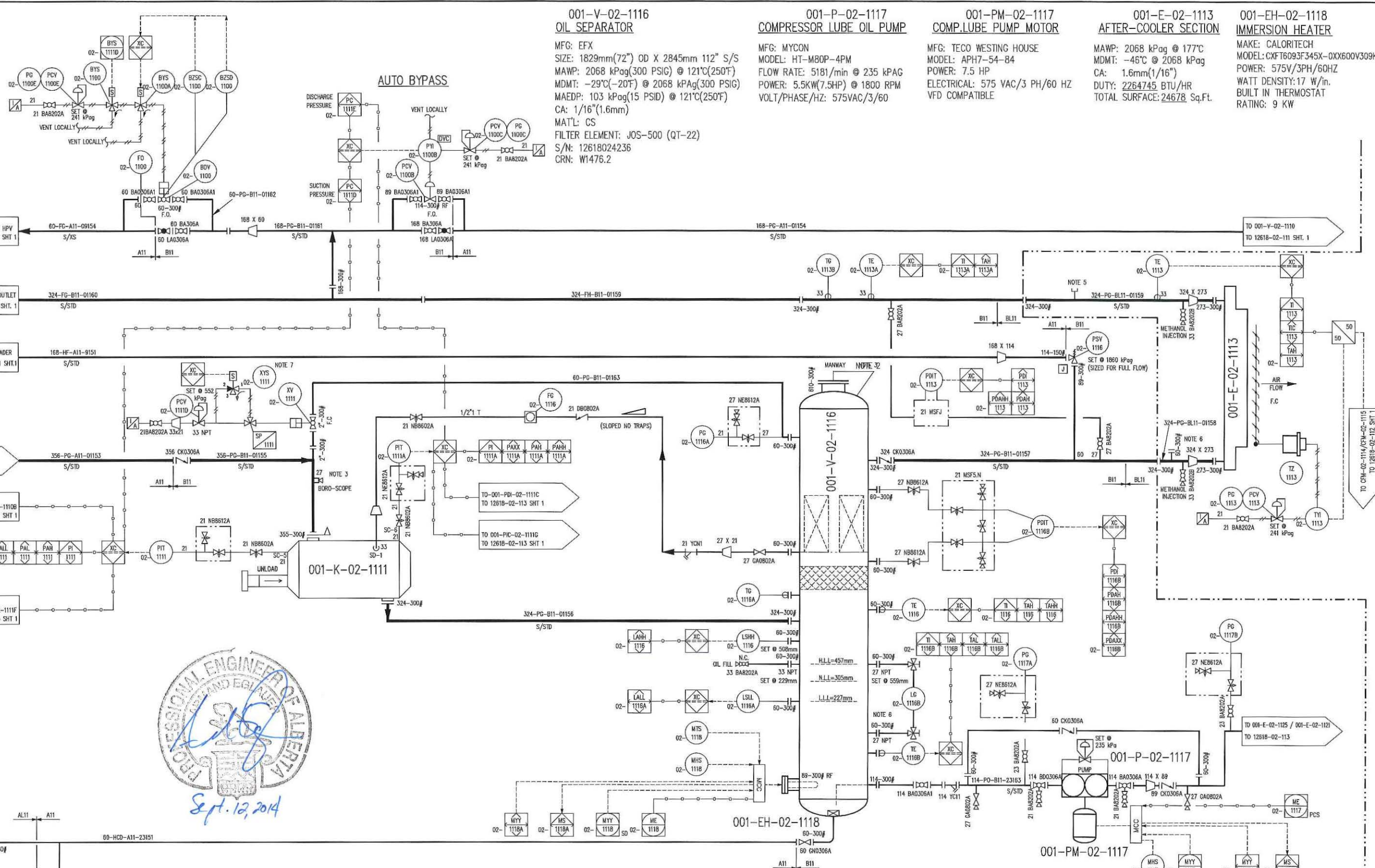


ISSUED FOR
REGISTRATION

NAME: T. WELSH DATE: SEP 12/14

- NOTES:
- LSLL-1010D TO HAVE "C" TIMER ON THE PLC.
 - SPECTACLE BLINDS ARE PCR AND APPLIED ON SUCTION SCRUBBER ONLY.
 - LG TO HAVE 45° FITTINGS.

5	ISSUED FOR REGISTRATION	SEP 12/14	TW	ATE	DATE	DEC 10/12	SCALE	NTS	DEVON CANADA FERRIER CPF BATTERY SCREW CATERPILLAR G3606LE FRICK SGC8-3524	ENERFLEX Calgary, Alberta, Canada	P & I DIAGRAM PROCESS GAS		
4	FINAL AS BUILT	JAN 02/14	CS	SG	DRAWN BY	A. HAMMOND	CHECKED BY	S. GURI				APPROVED BY	B. MINSHULL
3	FINAL AS BUILT	NOV 21/13	AR	SG	PROJECT MANAGER	B. MINSHULL	PROJECT ENGINEER	S. GURI					
2	ISSUED FOR CONSTRUCTION	SEP 27/13	GP	SG	CUST PO	4100000964							
1	ISSUED FOR CONSTRUCTION	JUN 21/13	CS	SG	OPER. CODE								
0	ISSUED FOR CONSTRUCTION	APR 09/13	AT	SG	WORK ORDER	12618-02							
REV	DESCRIPTION	DATE	BY	APR	APEGGA PERMIT No:	P8651					DWG NO	12618-02-111	
											SHT	1	
											REV	5	



001-V-02-1116 OIL SEPARATOR
 MFG: EFX
 SIZE: 1829mm(72") OD X 2845mm 112" S/S
 MAWP: 2068 kPag(300 PSIG) @ 121°C(250°F)
 MDMT: -29°C(-20°F) @ 2068 kPag(300 PSIG)
 MAEDP: 103 kPag(15 PSID) @ 121°C(250°F)
 CA: 1/16"(1.6mm)
 MAT'L: CS
 FILTER ELEMENT: JOS-500 (QT-22)
 S/N: 12618024236
 CRN: W1476.2

001-P-02-1117 COMPRESSOR LUBE OIL PUMP
 MFG: MYCON
 MODEL: HT-M80P-4PM
 FLOW RATE: 518l/min @ 235 kPag
 POWER: 5.5kW(7.5HP) @ 1800 RPM
 VOLT/PHASE/HZ: 575VAC/3/60

001-PM-02-1117 COMP. LUBE PUMP MOTOR
 MFG: TECO WESTING HOUSE
 MODEL: APH7-54-84
 POWER: 7.5 HP
 ELECTRICAL: 575 VAC/3 PH/60 HZ
 VFD COMPATIBLE

001-E-02-1113 AFTER-COOLER SECTION
 MAWP: 2068 kPag @ 177°C
 MDMT: -45°C @ 2068 kPag
 CA: 1.6mm(1/16")
 DUTY: 2264745 BTU/HR
 TOTAL SURFACE: 24678 Sq.Ft.

001-EH-02-1118 IMMERSION HEATER
 MAKE: CALORITECH
 MODEL: CXT6093F345X-0X600V309KW
 POWER: 575V/3PH/60HZ
 WATT DENSITY: 17 W/in.
 BUILT IN THERMOSTAT
 RATING: 9 KW

AUTO BLOWDOWN

AUTO BYPASS



IMPORTANT:
 OVER PRESSURE PROTECTION
 TO BE PROVIDED OFF-SKID
 BY CUSTOMER

ISSUED FOR REGISTRATION
 NAME: T. WELSH DATE: SEP 12/14

- NOTES:**
1. REMOVABLE SPOOL WITH LIFTING LUGS
 2. DAVIT ARM.
 3. BOROSCOPE INSPECTION POINT TO BE LOCATED CLOSE TO STRAINER.
 4. CORROSION COUPONS.
 5. INJECTION OF CORROSION INHIBITOR.
 6. SIGHT GLASS AND GAUGE TO HAVE 45° FITTING
 7. SOLENOID WILL BE ACTIVATED AT 400 RPM DECREASING ON ENGINE.

5	ISSUED FOR REGISTRATION	SEP 12/14	TW	ATE	DATE: DEC 10/12	SCALE: NTS	DEVON CANADA FERRIER CPF BATTERY SCREW CATERPILLAR G3606LE FRICK SCGB-3524	ENERFLEX Calgary, Alberta, Canada	P & I DIAGRAM PROCESS GAS
4	FINAL AS BUILT	JAN 02/14	CS	SG	DRAWN BY: A. HAMMOND	CHECKED BY: S. GURI	APPROVED BY: B. MINSHULL		
3	FINAL AS BUILT	NOV 21/13	AR	SG	PROJECT MANAGER: B. MINSHULL	PROJECT ENGINEER: S. GURI		DWG NO: 12618-02-111	SHT: 2
2	REVISED TAGGING & NOTES, ADDED XV1101	SEP 27/13	GP	LD	CUST PO: 4100000964			REV: 5	
1	ISSUED FOR CONSTRUCTION	JUN 21/13	CS	SG	OPER. CODE: APEGGA PERMIT No: P8651	WORK ORDER: 12618-02			
0	ISSUED FOR CONSTRUCTION	APR 09/13	AT	SG					

PLOT 12 Sep 2014 12:44pm gnsd