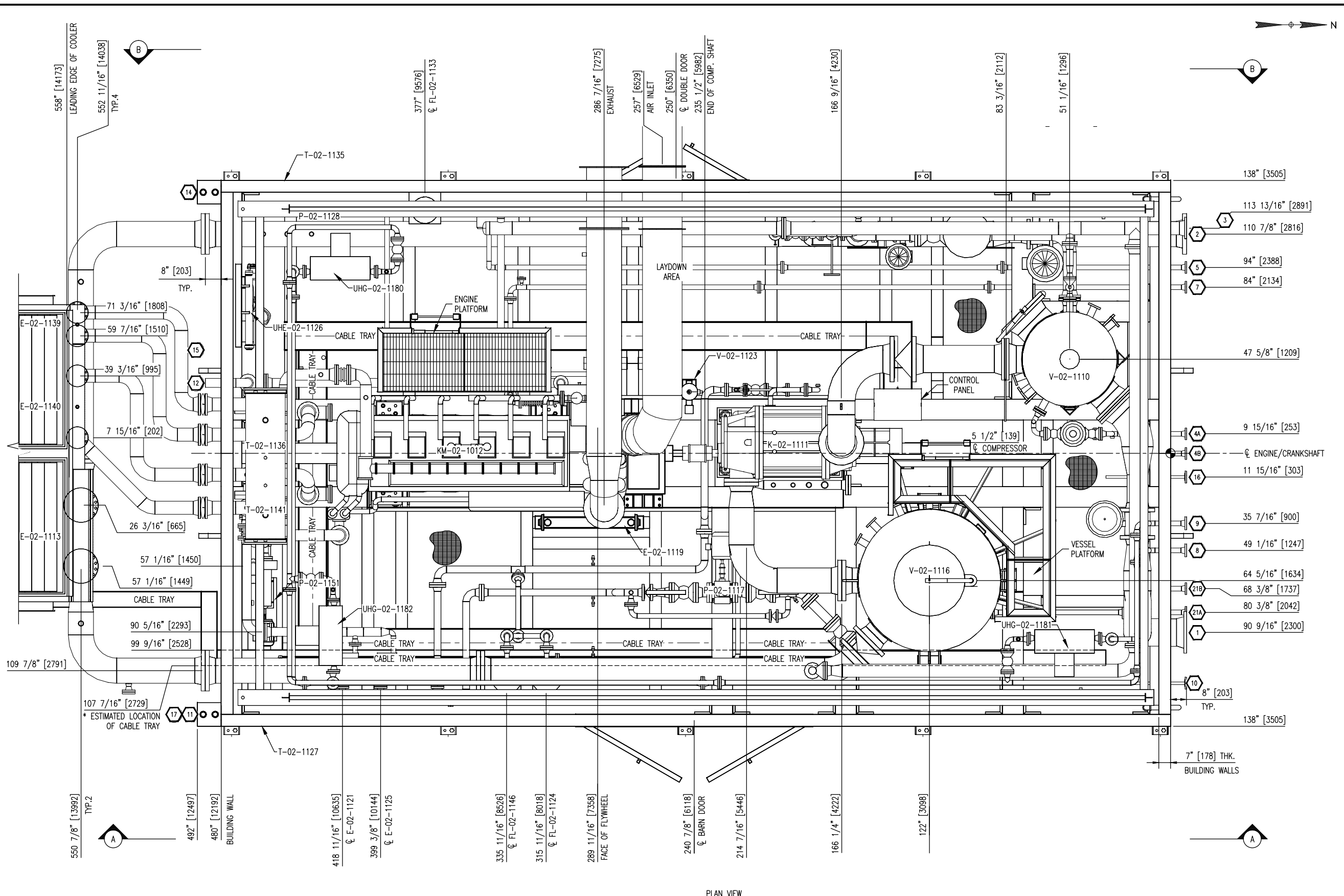


P:\10000 Projects\12618-02-Devon Canada - Worthy Parsons - Ferner G3606LE SGB-3524-V. Drafting\12618-02-AS-BUILD.dwg  
 PLOT DATE: Mar 10, 2014, 11:50



NOZZLE SCHEDULE				
MARK	SERVICE	SIZE	RATING	TYPE
1	GAS INLET	14" [356mm]	150#	RF
2	GAS OUTLET	12" [324mm]	300#	RF
3	HIGH PRESSURE VENT HEADER	6" [168mm]	150#	RF
4	HYDROCARBON DRAIN	2" [60mm]	150#	RF
5	FUEL GAS INLET	2" [60mm]	150#	RF
7	START AIR INLET	2" [60mm]	150#	RF
8	HEAT MEDIUM SUPPLY	2" [60mm]	300#	RF
9	HEAT MEDIUM RETURN	2" [60mm]	300#	RF
10	ENGINE LUBE OIL FILL	2" [60mm]	150#	RF
11	WASTE OIL PUMP-OUT	2" [60mm]	3000#	MNPT
12	START AIR VENT	4" [114mm]	-	PIPE
13	GLYCOL FILL	1" [33mm]	3000#	FNPT
14	GLYCOL DRAIN	2" [60mm]	3000#	MNPT
15	FUEL GAS PCV VENT	1" [33mm]	-	PIPE
16	INSTRUMENT AIR SUPPLY	2" [60mm]	150#	RF
17	PUMP VENT HEADER	1-1/2" [48mm]	-	PIPE
21	OIL SEPARATOR DRAIN	2" [60mm]	150#	RF

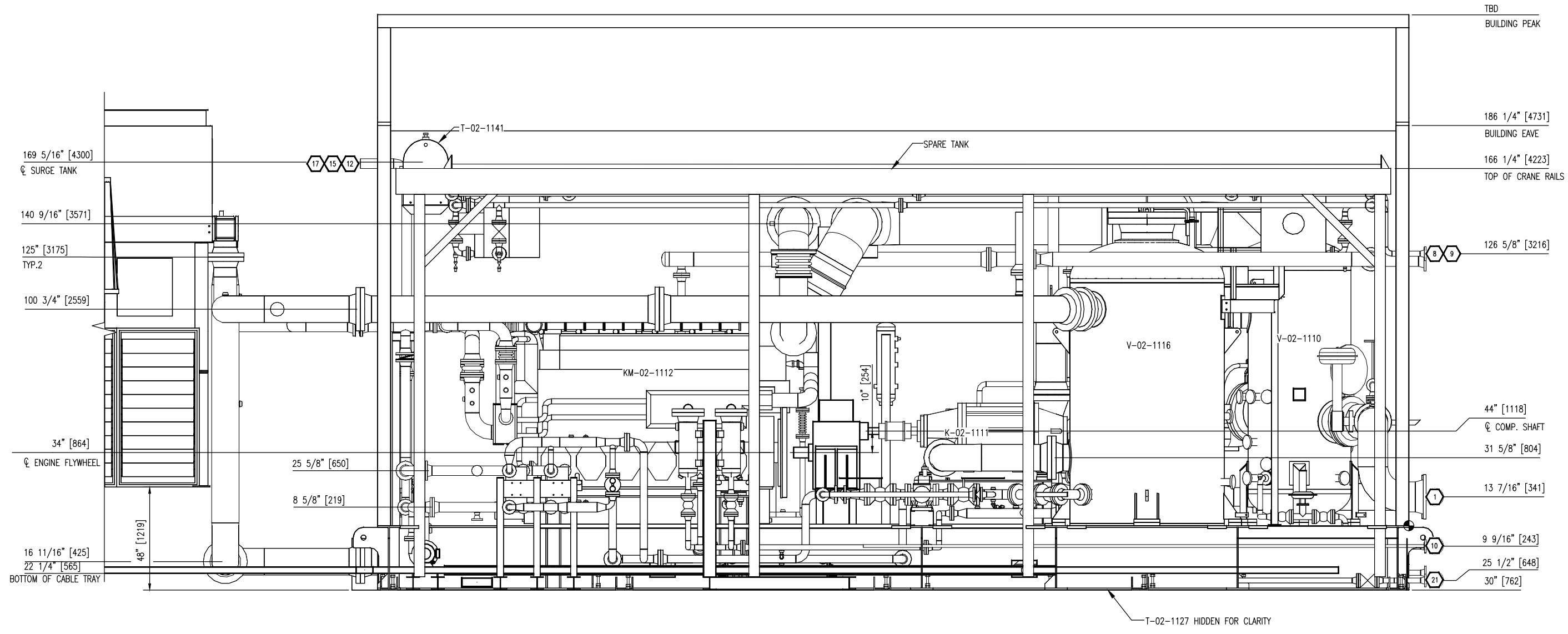
GENERAL SPECIFICATIONS	
OPERATING PACKAGE DIMENSIONS:	
LENGTH	87'-1" [26542mm]
WIDTH	TBD
HEIGHT	TBD
WEIGHT	269,036 LBS
SHIPPING DIMENSIONS (Single Piece):	
LENGTH	42'-0" [12801mm]
WIDTH	24'-0" [7315mm]
HEIGHT	TBD
WEIGHT	209,173 LBS
CENTER OF GRAVITY:	
X	"X" FROM REFERENCE: 256"
Y	"Y" FROM REFERENCE POINT: -2"
Z	"Z" FROM REFERENCE POINT: 42"
Z DIM FROM TOP OF SKID	
BRIDGE CRANE RATING	5 TON
SEAL PAN	FLAT
LOADING METHOD	CRANE/JACK & ROLL
NOTES:	
1. ALL (2) DIMENSIONS TAKEN FROM TOP OF SKID.	
2. ALL SKID EDGE CONNECTIONS ±1/4" TOLERANCE.	
3. ALL TAIL DIMENSIONS FROM REFERENCE POINT.	

**FINAL AS BUILT**  
 NAME: H.SUN DATE: MAR 10/14

3	AS-BUILT, ADDED CABLE TRAY	MAR 10/14	HS	SG	DATE DEC 18/12 SCALE 1/2"=1'-0"	DEVON CANADA CPF BATTERY SCREW CATERPILLAR G3606LE FRICK SGC3-3524	<b>ENERFLEX</b> Calgary, Alberta, Canada	GENERAL ARRANGEMENT PLAN VIEW		
2	AS-BUILT	JUL 18/13	CE	SG	DRAWN BY C.EASTHOPE CHECKED BY K.OXFORD APPROVED BY S.GURI			DWG NO 12618-02-201	SHT 1	REV 3
1	GAS INLET CONNECTION #1 MOVED EAST 1 1/4"	JUNE 4/13	CE	SG	PROJECT MANAGER B.MINSHULL PROJECT ENGINEER S.GURI			WORK ORDER 12618-02		
0	ISSUED FOR CONSTRUCTION	APR 18/13	CE	SG	CUST PO N/A	APEGGA PERMIT No: P8651 OPER. CODE 198/298/490/511/591				
REV	DESCRIPTION	DATE	BY	APR						

THE INFORMATION CONTAINED HEREIN IS THE CONFIDENTIAL PROPERTY OF ENERFLEX, LTD. AND IS NOT FOR PUBLICATION, AND NO PART THEREOF SHALL BE COPIED OR COMMUNICATED TO A THIRD PARTY WITHOUT AUTHORIZATION FROM ENERFLEX, LTD.

P:\10000 Projects\12618-02 Devon Canada - Worthy Parsons - Ferner G3606LE SCGB-3524 V. Drafting\12618-02-AS-BUILD.dwg  
 PLOT DATE Mar 10, 2014, Issun



ELEVATION VIEW A-A

TBD  
 BUILDING PEAK  
 186 1/4" [4731]  
 BUILDING EAVE  
 166 1/4" [4223]  
 TOP OF CRANE RAILS  
 126 5/8" [3216]  
 44" [1118]  
 COMP. SHAFT  
 31 5/8" [804]  
 13 7/16" [341]  
 9 9/16" [243]  
 25 1/2" [648]  
 30" [762]

NOTE:  
 ALL TAIL DIMENSIONS ARE  
 TAKEN FROM REFERENCE  
 POINT @ AT TOP OF SKID

**FINAL  
 AS BUILT**  
 NAME H.SUN DATE MAR 10/14

REV	DESCRIPTION	DATE	BY	APR	DATE	SCALE	OPER. CODE	WORK ORDER	DWG NO	SHT	REV
3	AS-BUILT, ADDED CABLE TRAY	MAR 10/14	HS	SG	DEC 18/12	1/2"=1'-0"	198/238/490/511/591	12618-02	12618-02-201	2	3
2	AS-BUILT	JUL 18/13	CE	SG							
1	GAS INLET CONNECTION #1 MOVED EAST 1 1/4"	JUNE 4/13	CE	SG							
0	ISSUED FOR CONSTRUCTION	APR 18/13	CE	SG							

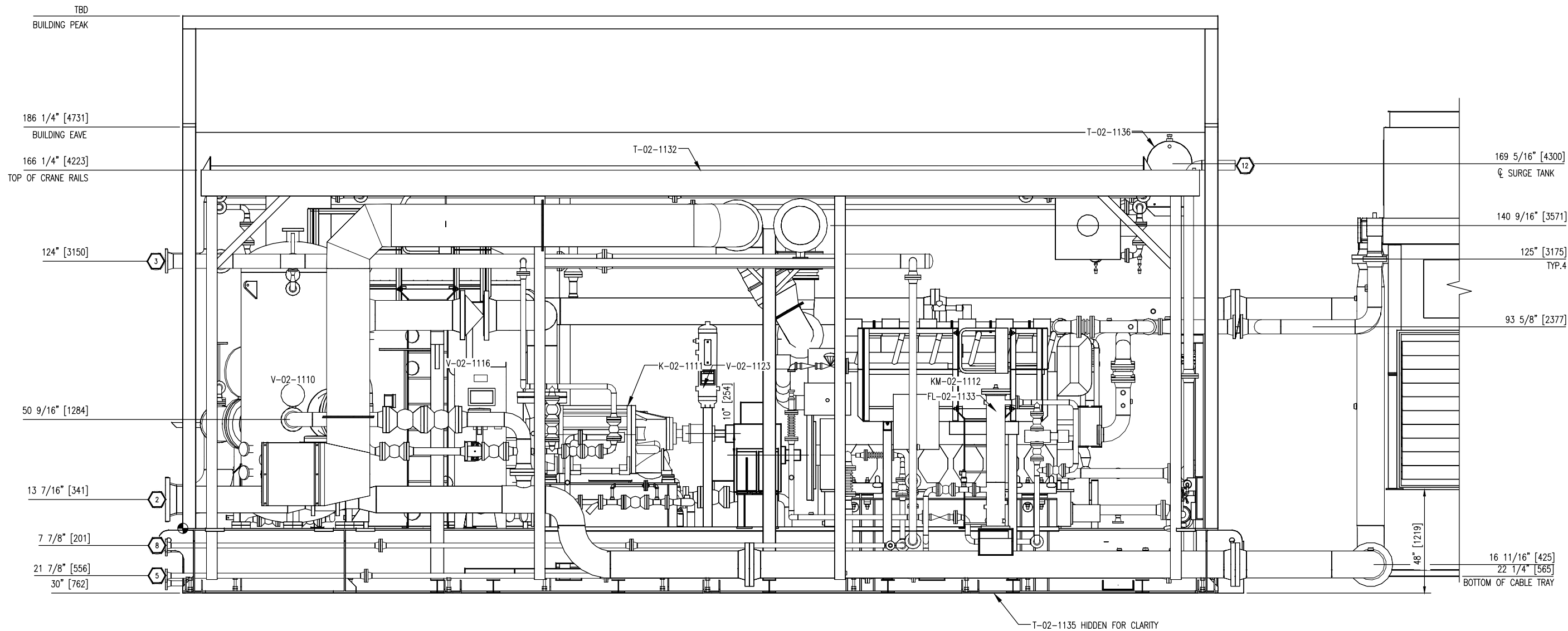
DEVON CANADA CPF  
 BATTERY SCREW  
 CATERPILLAR G3606LE  
 FRICK SGCB-3524

**ENERFLEX**  
 Calgary, Alberta,  
 Canada

GENERAL ARRANGEMENT  
 ELEVATION VIEW A-A

THE INFORMATION CONTAINED HEREIN IS THE CONFIDENTIAL PROPERTY OF ENERFLEX, LTD. AND IS NOT FOR PUBLICATION, AND NO PART THEREOF SHALL BE COPIED OR COMMUNICATED TO A THIRD PARTY WITHOUT AUTHORIZATION FROM ENERFLEX, LTD.

P:\10000 Projects\12618-02 Devon Canada - Worley Parsons - Ferner G3606LE SCGB-3524 V. Drafting\12618-02-AS-BUILD.dwg  
 PLOT DATE: Mar 10, 2014, 11:50 AM



ELEVATION VIEW B-B

**FINAL AS BUILT**  
 NAME: H.SUN DATE: MAR 10/14

NOTE:  
 ALL TAIL DIMENSIONS ARE TAKEN FROM REFERENCE POINT AT TOP OF SKID

REV	DESCRIPTION	DATE	BY	APR	DATE	SCALE	OPER. CODE	WORK ORDER	DWG NO	SHT	REV
3	AS-BUILT, ADDED CABLE TRAY	MAR 10/14	HS	SG	DEC 18/12	1/2"=1'-0"	198/298/490/511/591	12618-02	12618-02-201	3	3
2	AS-BUILT	JUL 18/13	CE	SG							
1	GAS INLET CONNECTION #1 MOVED EAST 1 1/4"	JUNE 4/13	CE	SG							
0	ISSUED FOR CONSTRUCTION	APR 18/13	CE	SG							

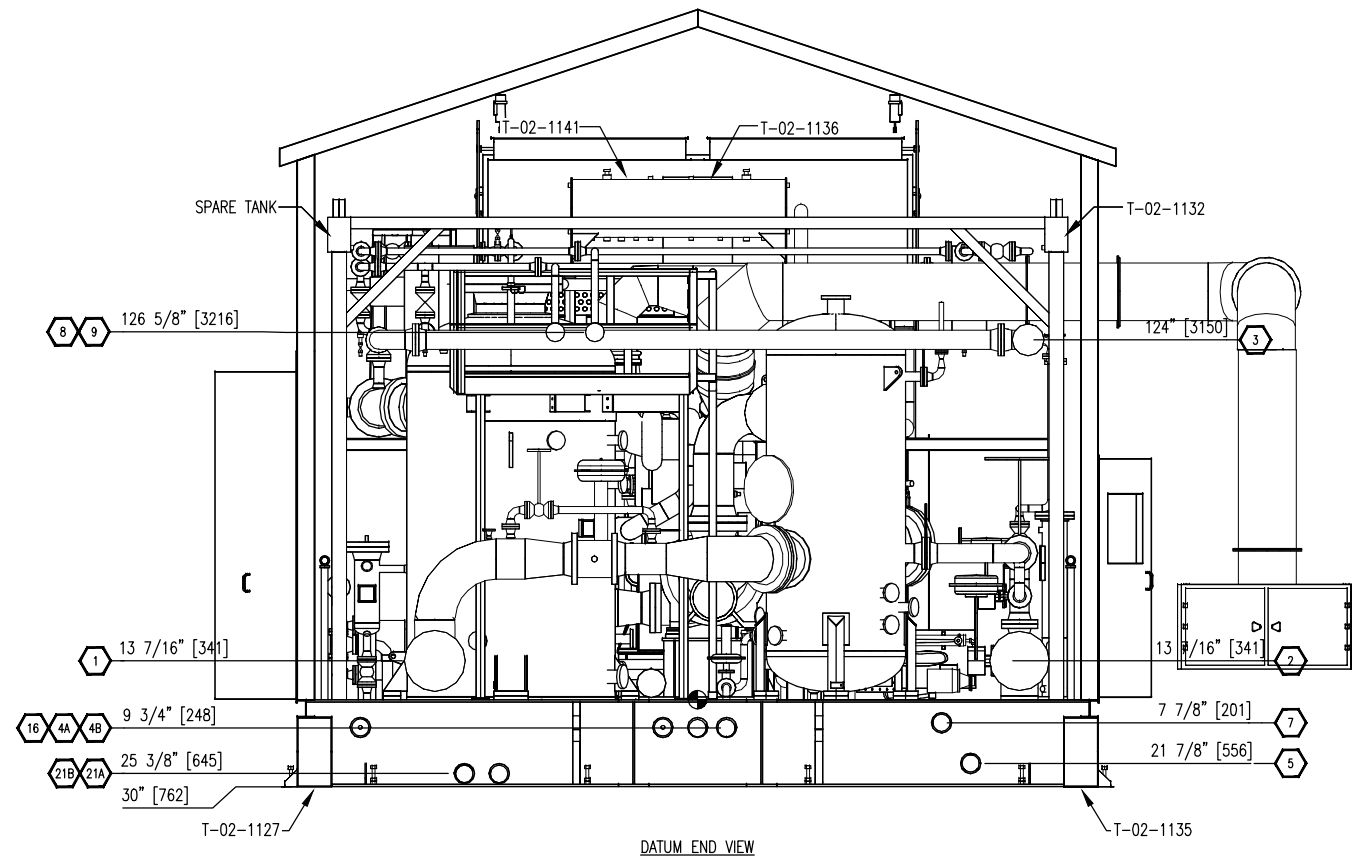
DEVON CANADA CPF  
 BATTERY SCREW  
 CATERPILLAR G3606LE  
 FRICK SGCB-3524

**ENERFLEX**  
 Calgary, Alberta,  
 Canada

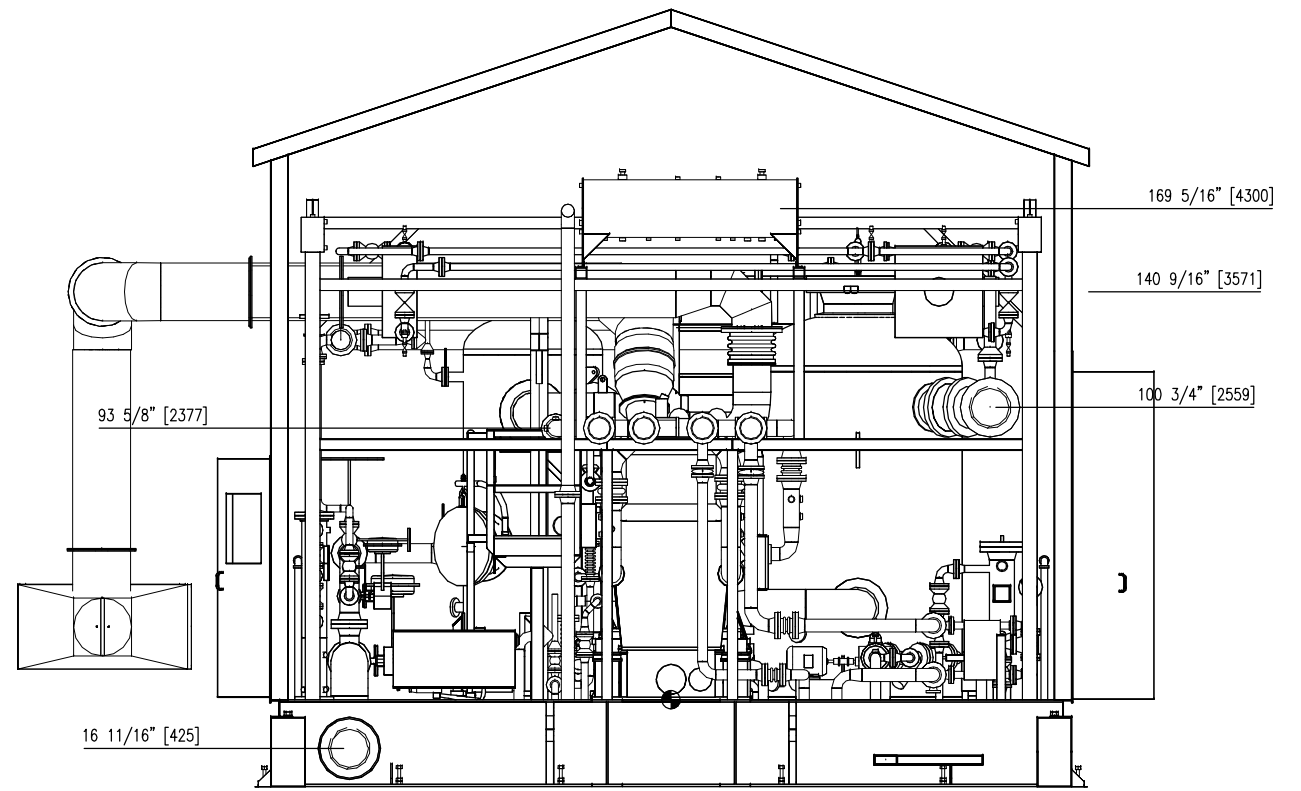
GENERAL ARRANGEMENT  
 ELEVATION VIEW B-B

THE INFORMATION CONTAINED HEREIN IS THE CONFIDENTIAL PROPERTY OF ENERFLEX, LTD. AND IS NOT FOR PUBLICATION, AND NO PART THEREOF SHALL BE COPIED OR COMMUNICATED TO A THIRD PARTY WITHOUT AUTHORIZATION FROM ENERFLEX, LTD.

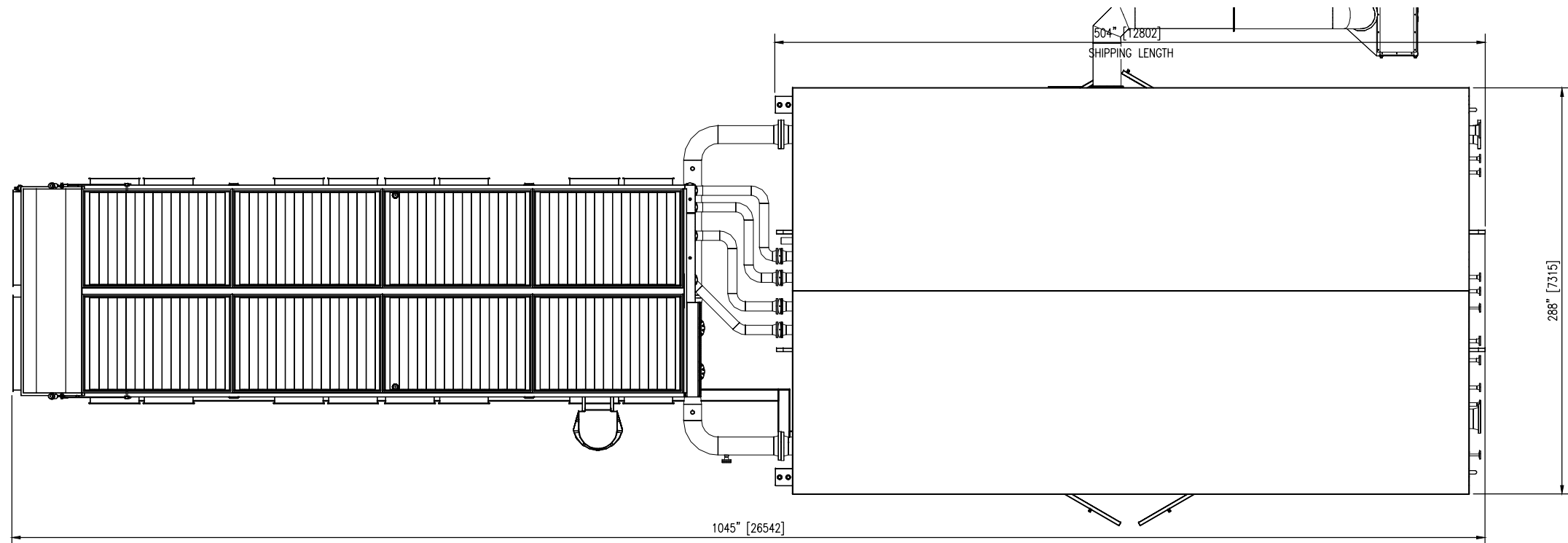
P:\10000 Projects\12618-02 Devon Canada - Workby Parsons - Ferner G3606LE SGB-3524.dwg (Drafting)\12618-02-AS-BUILD.dwg  
 PLOT DATE Mar 10, 2014, 1:58pm



DATUM END VIEW



COOLER END VIEW



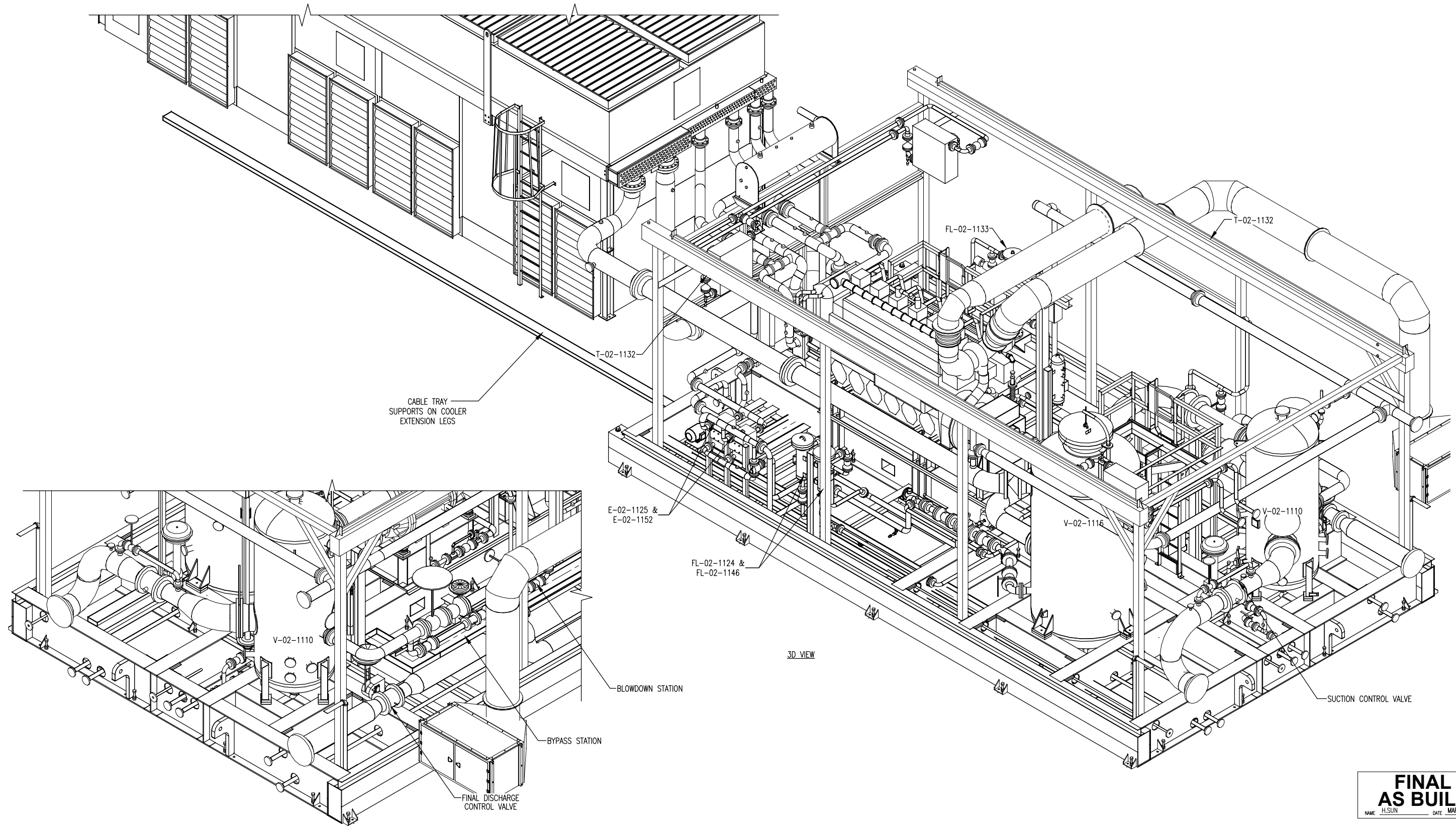
1045" [26542]  
 OVERALL PACKAGE LENGTH  
 OVERALL PLAN VIEW

**FINAL AS BUILT**  
 NAME H.SUN DATE MAR 10/14

				DATE DEC 18/12	SCALE 3/8"=1'-0"	DEVON CANADA CPF		<b>ENERFLEX</b> Calgary, Alberta, Canada	GENERAL ARRANGEMENT			
				DRAWN BY C.EASTHOPE	CHECKED BY K.OXFORD	APPROVED BY S.GURI	BATTERY SCREW		OVERALL PLAN & END VIEWS			
				PROJECT MANAGER B.MINSHULL	PROJECT ENGINEER S.GURI		CATERPILLAR G3606LE					
				CUST PO N/A		FRICK SGB-3524						
REV	DESCRIPTION	DATE	BY	APR	APEGGA PERMIT No: P8651	OPER. CODE 198/298/490/511/591	WORK ORDER 12618-02	DWG NO 12618-02-201	SHT 4	REV 3		

THE INFORMATION CONTAINED HEREIN IS THE CONFIDENTIAL PROPERTY OF ENERFLEX, LTD. AND IS NOT FOR PUBLICATION, AND NO PART THEREOF SHALL BE COPIED OR COMMUNICATED TO A THIRD PARTY WITHOUT AUTHORIZATION FROM ENERFLEX, LTD.

P:\10000 Projects\12618-02 Devon Canada - Morley Parsons - Ferner G3606LE SGCB-3524-A. Drafting\12618-02-AS-BUILD.dwg  
 PLOT DATE: Mar 10, 2014, 11:50 AM



**FINAL AS BUILT**  
 NAME: H.SUN DATE: MAR 10/14

3D VIEW

REV	DESCRIPTION	DATE	BY	APR	DATE	SCALE	OPER. CODE	WORK ORDER	DWG NO	SHT	REV
3	AS-BUILT, ADDED CABLE TRAY	MAR 10/14	HS	SG	DEC 18/12	3/8"=1'-0"	198/298/490/511/591	12618-02	12618-02-201	5	3
2	AS-BUILT	JUL 18/13	CE	SG							
1	GAS INLET CONNECTION #1 MOVED EAST 1 1/4"	JUNE 4/13	CE	SG							
0	ISSUED FOR CONSTRUCTION	APR 18/13	CE	SG							

DRAWN BY: C.EASTHOPE CHECKED BY: K.OXFORD PROJECT MANAGER: B.MINSHULL	APPROVED BY: S.GURI PROJECT ENGINEER: S.GURI	DEVON CANADA CPF BATTERY SCREW CATERPILLAR G3606LE FRICK SGCB-3524	<b>ENERFLEX</b> Calgary, Alberta, Canada	GENERAL ARRANGEMENT 3D VIEW
APEGGA PERMIT No: P8651			DATE: DEC 18/12	

THE INFORMATION CONTAINED HEREIN IS THE CONFIDENTIAL PROPERTY OF ENERFLEX, LTD. AND IS NOT FOR PUBLICATION, AND NO PART THEREOF SHALL BE COPIED OR COMMUNICATED TO A THIRD PARTY WITHOUT AUTHORIZATION FROM ENERFLEX, LTD.