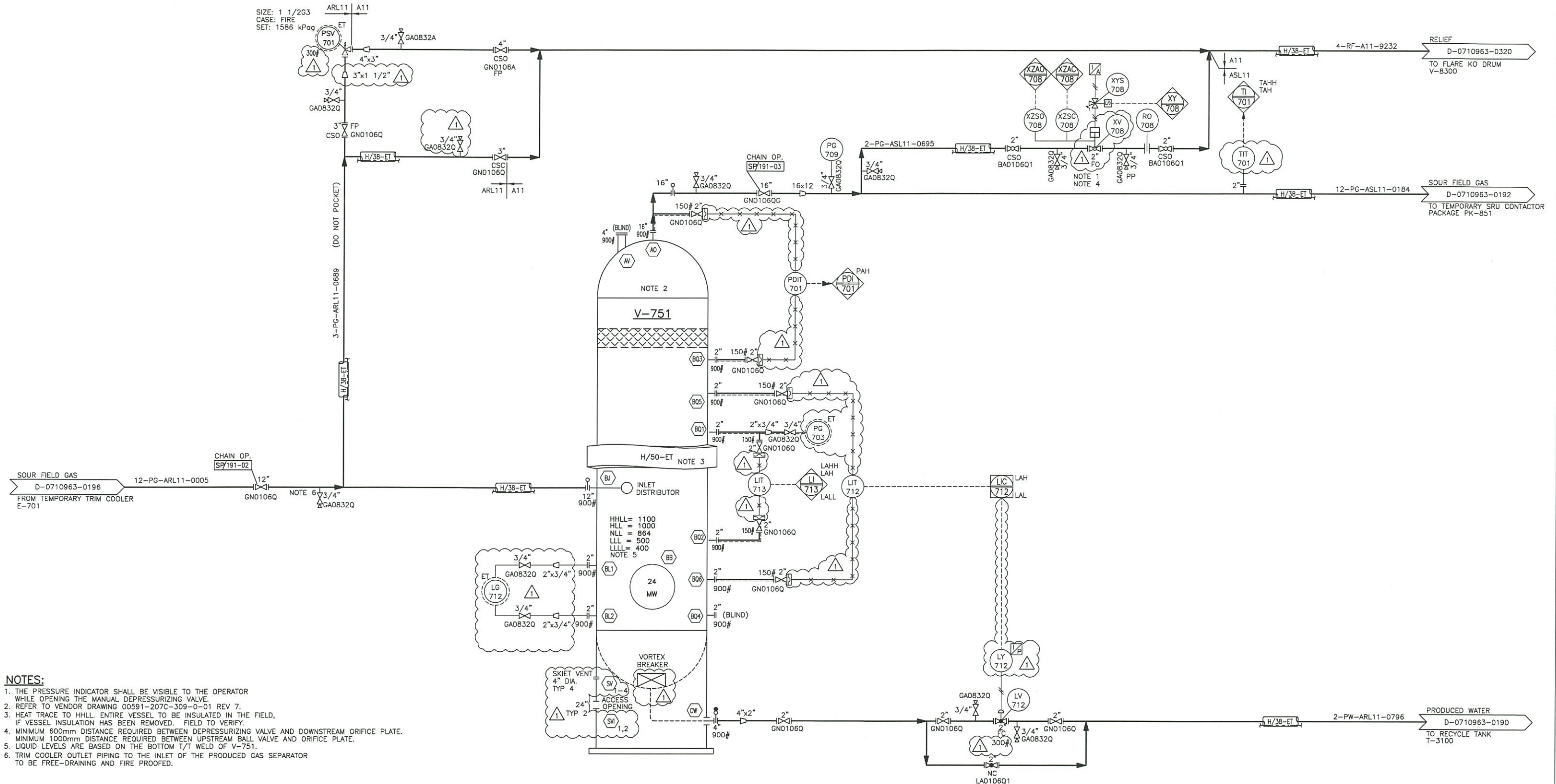


V-751  
PRODUCED GAS SEPARATOR (TEMPORARY)

SIZE: 2286 mm ID x 3200 mm T/T  
DESIGN: 12893 kPag @ 177/-29°C  
TRIM: PW-ARL11-0246



NOTES:

1. THE PRESSURE INDICATOR SHALL BE VISIBLE TO THE OPERATOR WHILE OPENING THE MANUAL DEPRESSURIZING VALVE.
2. REFER TO VENDOR DRAWING 00591-207C-309-0-01 REV 7.
3. HEAT TRACE TO HLL. ENTIRE VESSEL TO BE INSULATED IN THE FIELD, IF VESSEL INSULATION HAS BEEN REMOVED. FIELD TO VERIFY.
4. MINIMUM 600mm DISTANCE REQUIRED BETWEEN DEPRESSURIZING VALVE AND DOWNSTREAM ORIFICE PLATE. MINIMUM 1000mm DISTANCE REQUIRED BETWEEN UPSTREAM BALL VALVE AND ORIFICE PLATE.
5. LIQUID LEVELS ARE BASED ON THE BOTTOM T/T WELD OF V-751.
6. TRIM COOLER OUTLET PIPING TO THE INLET OF THE PRODUCED GAS SEPARATOR TO BE FREE-DRAINING AND FIRE PROOFED.

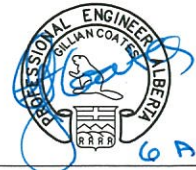
DWG. NO.	REFERENCE DRAWINGS	DEVON WBS NO.	REV	REVISIONS	DATE (yy.mm.dd)	BY	CHK'D	APP'D	OWNR APP'D	ENGINEER AND PERMIT STAMPS	DRAWN BY	BP	13.03.08
											PROCESS CK.	GC	13.03.08
											INST. CK.		
											MECH. CK.		
											CIVIL CK.		
											STRUCT. CK.		
										ELECT. CK.			
										OWNER APP.			

CH2MHILL



JACKFISH 2  
CENTRAL PROCESSING FACILITY (TEMPORARY SOLUTION)  
P&ID - PRODUCED GAS SEPARATOR V-751  
LSD 7-27-75-07 W4M

CONTR JOB NO	SCALE	DWG. NO.	DEVON WBS NO.
467971	NTS	D-0710963-0191	01-04400.02.04



PERMIT TO PRACTICE  
CH2M HILL Energy  
Canada Limited  
PERMIT NUMBER: P6361  
The Association of Professional  
Engineers, Geologists and  
Geophysicists of Alberta

CADD FILE:

6 AUG '13