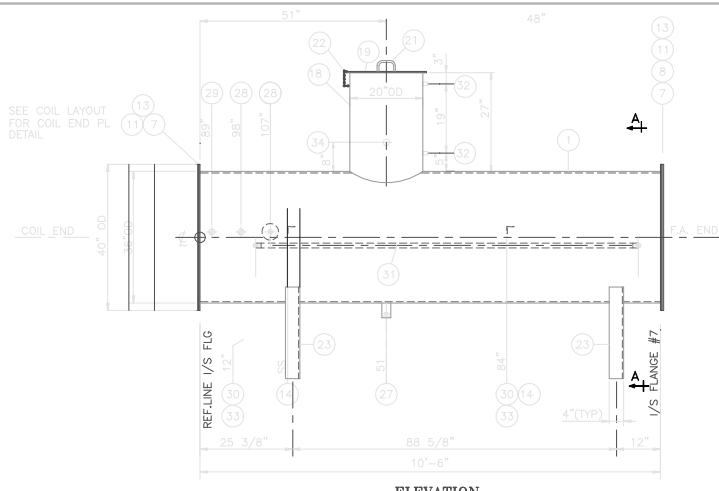
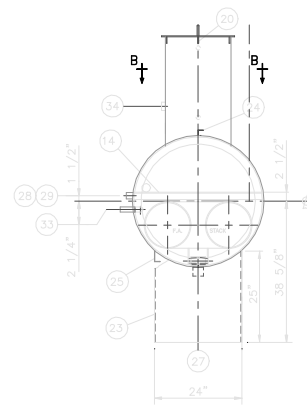


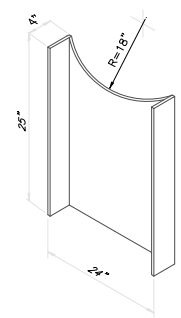
THIS DRAWING IS THE EXCLUSIVE PROPERTY OF PRIORITY PROJECTS LIMITED, AND MAY NOT BE COPIED OR COMMUNICATED TO A THIRD PARTY WITHOUT THE WRITTEN AUTHORIZATION OF PRIORITY PROJECTS LIMITED.



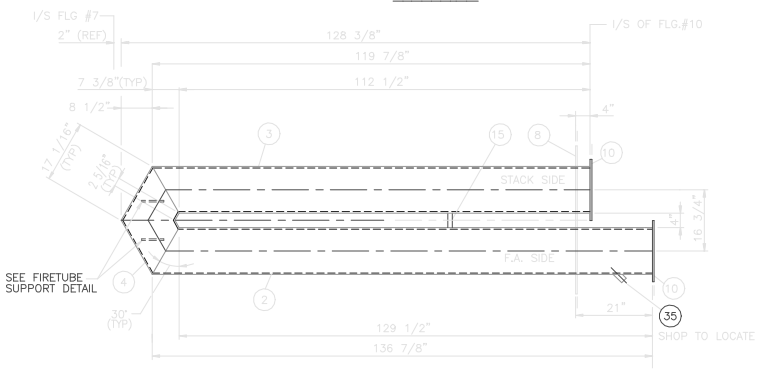
ELEVATION



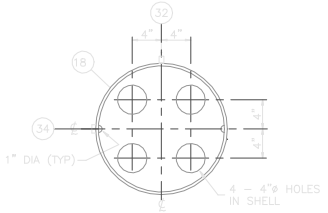
SECTION A - A



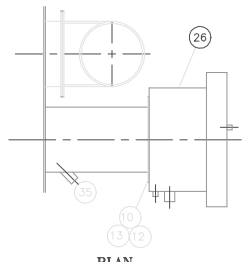
SADDLE DETAIL



FIRETUBE DETAIL



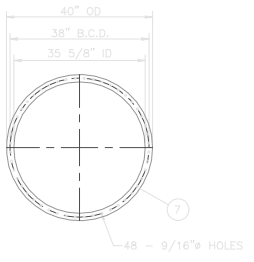
SECTION B - B



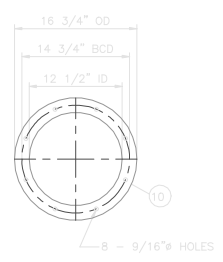
**PLAN
FLAME ARRESTOR & STACK ASS'Y**



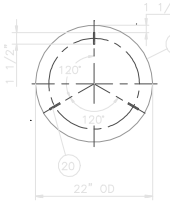
STACK DETAIL



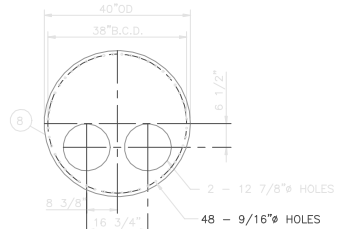
SHELL FLANGE DETAIL



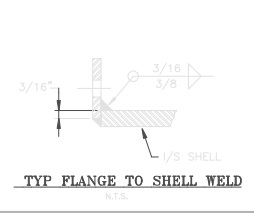
ITEM #10 DETAIL



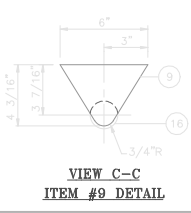
ITEM #19 DETAIL



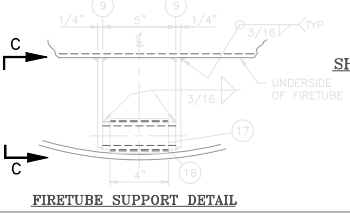
F.T. END FLANGE DETAIL



TYP FLANGE TO SHELL WELD



**VIEW C-C
ITEM #9 DETAIL**



FIRETUBE SUPPORT DETAIL

BILL OF MATERIALS

MARK No.	QUANTITY	DESCRIPTION	MATERIAL
1	1	SHELL 36" O.D. ERW PIPE x 3/8" THK x 10'-6" LG	A-53-B
2	1	FIRE TUBE 19" STD 4.21 THK ERW PIPE x 136 7/8" LG	A-53-B
3	1	FIRE TUBE 19" STD (3/8" THK) ERW PIPE x 119 7/8" LG	A-53-B
4	2	FIRE TUBE 12" STD (3/8" THK) ERW PIPE x 17" LG	A-53-B
5	1	STACK 12" PIPE x 0.18" THK x 126" LG	CS
6	1	STACK 12" PIPE x 0.18" THK x 16 3/4" LG	CS
7	2	SHELL FLANGE 1/4" PL x 40" OD x 35 5/8" ID	A-36
8	1	F.T. END COVER PL 1/4" PL x 40" OD	A-36
9	2	F.T. SUPPORT- 1/4" PL x 4 1/4" x 6" LG	A-36
10	3	FLANGE 1/4" PL x 16 3/4" OD x 12 1/2" ID	A-36
11	2	HEATER GASKET 1/8" THK x 40" OD x 36" ID	DURLON
12	2	STACK/F.A. GASKET 1/16" THK x 16 3/4" OD x 12 3/4" ID	DURLON
13	120	MACHINE BOLTS 1/2" x 1 1/2" LG C/W 1" HEX NUT EACH	GR-5 CS
14	2	COIL SUPPORT ANGLE 2" x 2" x 1/4" x 35 1/4" LG	A-36
15	1	TUBE STAY 3/8" R.B. x 4" LG	A-36
16	1	F.T. SUPPORT- 1 1/2" SCH 160 SMLS PIPE x 5" LG	A-106-B
17	1	F.T. SUPPORT ROLLER- 2" SCH 80 SMLS PIPE x 4" LG	A-106-B
18	1	EXP. POT 20" - SCH 10(1/4" WT) ERW PIPE x 50" LG	A-53-B
19	1	EXP. POT COVER PLATE 1/4" PL x 22" OD	A-36
20	3	EXP. POT CAP SPACERS 1" x 1/4" TB x 1 1/2" LG	A-36
21	1	HANDLE 3/8" R.B. x 9" LG	A-36
22	2	EXP. POT COVER CHAIN 1/4" DIA. x 1 1/2" x 10 LINK LG	CS
23	2	SADDLE PLATE- 1/4" FORMCO CHANNELS 4" x 24" x 25" LG	A-36
24	1	BLDG SUPPORT ANGLE 1 1/2" x 1 1/2" x 1/4" x 48" LG (OPTIONAL)	A-36
25	1	BLDG SUPPORT ANGLE 3 3/8" x 1 1/2" x 1/4" x 44" LG (OPTIONAL)	A-36
26	1	ENRARDO FLAME ARRESTOR FAB 20-12A	A-105
27	1	2" SCH 80 NIPPLE x 4" LG	A-105
28	2	1"-3000# NPT FULL CPLG	A-105
29	1	3/4"-3000# NPT FULL CPLG	A-105
30	2	1"-SCH 80 90 LR BW EL	A-234-WPB
31	1	1"-SCH 80 SMLS PIPE x 68 7/8" LG	A-106-B
32	2	1/2"-3000# NPT FULL CPLG	A-105
33	2	1"-SCH 80 NIPPLE x 4" LG TOE/BOE	A-105
34	1	2"-3000# NPT HALF CPLG	A-105
35	1	1"-3000# NPT CPLG x 4" LG	A-105

WEIGHT W/COIL & SKID = 5024 LBS.
WEIGHT C/W INSULATION & BLDG = 5454 LBS.

- NOTES:
- ALL WELDS TO BE 1/4" FILLET MIN. UNLESS OTHERWISE NOTED.
 - INSULATION OF HEATER SHELL O/S BLDG ONLY.
- 1 1/2" FIBERGLASS C/W ALUMINUM CLADDING (OPTIONAL).
 - PAINT: BRUSH BLAST.
ONE (1) COAT OF PRIMER.
ONE (1) COAT OF FINISH ENAMEL PAINT, COLOR - PPL BLUE.
STACK: HIGH HEAT BLACK PAINT.
 - BOLT HOLES TO STRADDLE CENTER LINES.
 - FUEL GAS COIL DESIGNED TO MEET ASME B31.3 DESIGN PRESSURE: 2000 PSIG @ 200°F.
C.A.: 0
HYDROTEST PRESSURE: 3000 PSIG
 - FILL VOLUME OF SHELL: 305 IMP. GALLONS
 - FILL VOLUME OF EXPANSION POT: 30.5 IMP. GALLONS

PRIORITY PROJECTS LTD.
BOX 638, 1603-B STREET, NISKU, ALBERTA T0C-2G0
TELEPHONE: (403) 955-3320 FAX: (403) 955-2561

750,000 BTU/Hr. INDIRECT LINE HEATER
36" O.D. x 10'-6" LG SHELL C/W
FLAME ARRESTOR

NO.	DATE	REVISIONS	DRAFTING	CHECK	DESIGN	APPR.	CUSTOMER DWG NUMBER	SCALE	DRAWING NUMBER	REV.
0	99/03/24	FOR CONSTRUCTION								