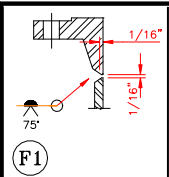
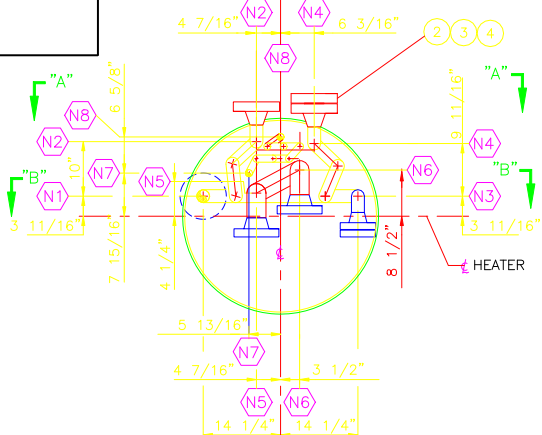


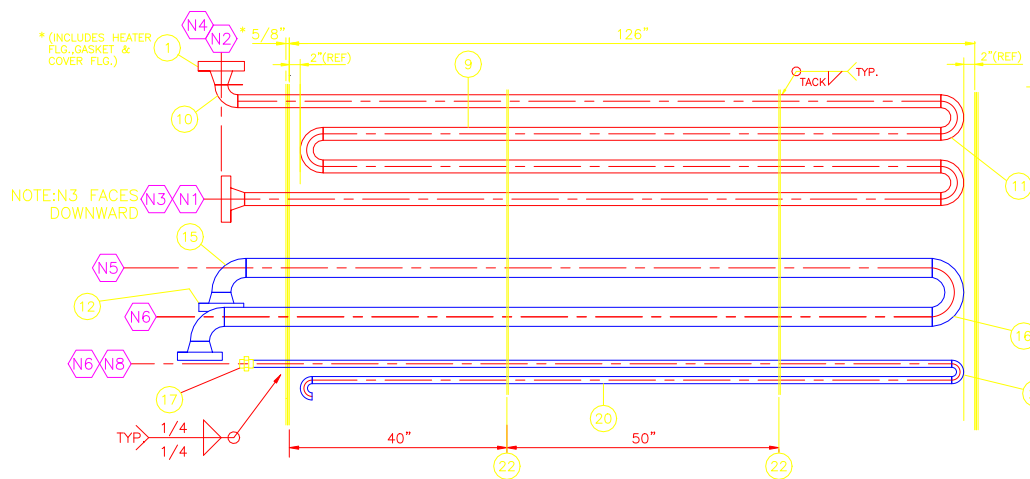
DIMTXT=-.125



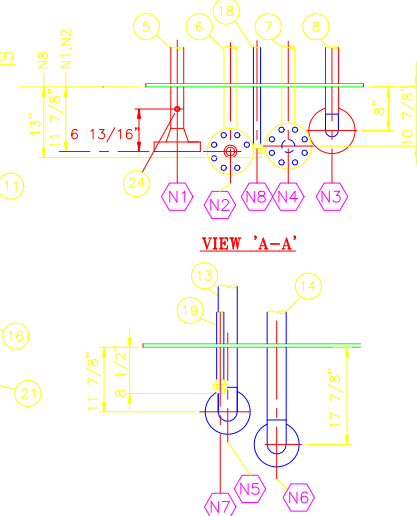
- N1,N2: COIL #1 - 2" 1500#
- N3,N4: COIL #2 - 2" 1500#
- N5,N6: COIL #3 - 3" 600#
- N7,N8: COIL #4 - 1" 3000#



COIL END VIEW



COIL LAYOUT-SCHEMATIC



VIEW 'B-B'

**BILL OF MATERIAL**

ITEM	QTY.	DESCRIPTION	MATERIAL	WELD
1	4	2"-1500# ANSI RFWN FLANGE 160 BORE N1,N2,N3,N4	A-105N	F1
2	2	2"-1500# RF BLIND FLG -N3 & N4 ONLY	A-105N	
3	2	2"-1500# ANSI FLEX. GASKETS	316 SS	
4	16	7/8"φ STUDS x 5 3/4" LG	A-193-B7M/194-2HM	
5	1	2"-SCH.160 PIPE x 127 13/16" LG N1	A-106-B	F1
6	1	2"-SCH.160 PIPE x 129 3/16" LG N2	A-106-B	F1
7	1	2"-SCH.160 PIPE x 128 3/16" LG N4	A-106-B	F1
8	1	2"-SCH.160 PIPE x 125 5/16" LG N3	A-106-B	F1
9	4	2"-SCH.160 PIPE x 113 1/2" LG	A-106-B	F1
10	3	2"-SCH.160 90° LRBW EL - N2,N3,N4	A-234-WPB	F1
11	6	2"-SCH.160 180° LRBW RETURN EL	A-234-WPB	F1
12	2	3"-600# ANSI RFWN FLANGE SCH.80 BORE N5,N6	A-105N	F1
13	1	3"-SCH.80 PIPE x 125 5/8" LG	A-106-B	F1
14	1	3"-SCH.80 PIPE x 131 5/8" LG	A-106-B	F1
15	2	3"-SCH.80 90° LRBW EL - N5,N6	A-234-WPB	F1
16	1	3"-SCH.80 180° LRBW RETURN EL	A-234-WPB	F1
17	2	1"-3000# SW UNION N7,N8	A-105N	F1
18	1	1"-SCH.80 PIPE x 133 5/16" LG	A-106-B	F1
19	1	1"-SCH.80 PIPE x 128 13/16" LG	A-106-B	F1
20	6	1"-SCH.80 PIPE x 117 1/2" LG	A-106-B	F1
21	7	1"-SCH.80 180° LRBW RETURN EL	A-234-WPB	F1
22	1	1/4" TUBE PLATE x DETAIL	G-40	F1
23	1	COIL FLANGE PL - 1/4" PL x 40" O.D.	G-40	
24	1	1"-6000# NPT TOL	A-105N	

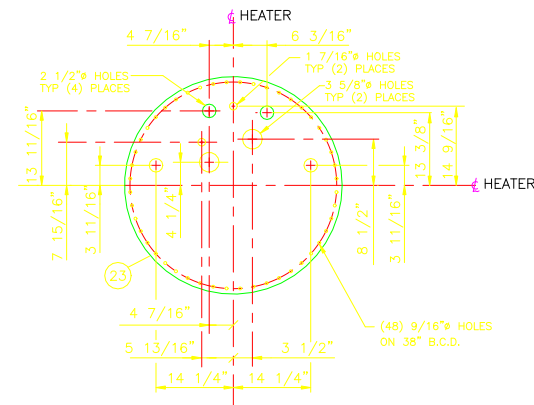
**DESIGN DATA**

DESIGN AND FABRICATE TO A.S.M.E. B 31.3 CODE, 1999 EDITION  
 COIL #1 & #2 CRN: F-3086.2  
 COIL #3 CRN: F-3319.2  
 COIL #4 CRN: F-3317.2

	COIL #1-2"	COIL #2-2"	COIL #3-3"
DESIGN PRESSURE	3130 PSIG	3130 PSIG	1350 PSIG
DESIGN TEMP.	200°F/-20°F	200°F/-20°F	200°F/-20°F
STRESS RELIEF	30 MIN@1150°F	30 MIN@1150°F	30 MIN@1150°F
RADIOGRAPHY	100%	100%	100%
C.A.	1/8"	1/8"	1/8"
HYDROTEST PRESS.	4695 PSIG	4695 PSIG	2025 PSIG
ESTIMATED WEIGHT	372 LBS	465 LBS	285 LBS
SURFACE AREA	25.14 SQ.FT	25.14 SQ.FT	17.97 SQ.FT
VOLUME	0.726 CU.FT	0.734 CU.FT	1.22 CU.FT.

	COIL #4-1"
DESIGN PRESSURE	675 PSIG
DESIGN TEMP.	200°F/-20°F
STRESS RELIEF	30 MIN@1150°F
RADIOGRAPHY	5%
C.A.	1/8"
HYDROTEST PRESS.	1013 PSIG
ESTIMATED WEIGHT	55 LBS
SURFACE AREA	32.45 SQ.FT
VOLUME	0.482 CU.FT



COIL END FLANGE DETAIL



**PRIORITY PROJECTS LTD.**

1603-8 STREET, NISQU, ALBERTA T9E 7S7  
 TELEPHONE: (780) 955-3320 FAX: (780) 955-2561

- COIL #1- 2"-SCH.160, 4 PASS
- COIL #2- 2"-SCH.160, 4 PASS
- COIL #3- 3"-SCH 80, 2 PASS
- COIL #4- 1"-SCH 80, 8 PASS

CUSTOMER NAME	KAISER ENERGY LTD.	SCALE	DRAWING NUMBER	REV.
DRAWN	SPB	NTS	5295-301	A
NO.	DATE	ISSUE FOR CRN	LSD NO.	
		REVISIONS	7-35-83-19W 6M	

B-STD-10-S