

**P-104 A/B**  
GLYCOL PUMPS

MILROY MODEL A \* MRI-G1-113  
1 1/2" PLUNGER, ADJUSTABLE STROKE  
1.0 HP, 3/50/480V X-P MOTOR  
113 SPM, 55 GPM MAX

**F-103**  
CHARCOAL FILTER

10 3/4" OD x 6'-6" HIGH  
100 PSIG DP @ 150°F  
BULK CHARCOAL

**F-102**  
GLYCOL FILTER

INVALCO # 1F-101  
\*/INTERNAL RELIEF & BYPASS  
25 MICRON CARTRIDGE

**E-108 / V-112**  
GLYCOL REGENERATOR

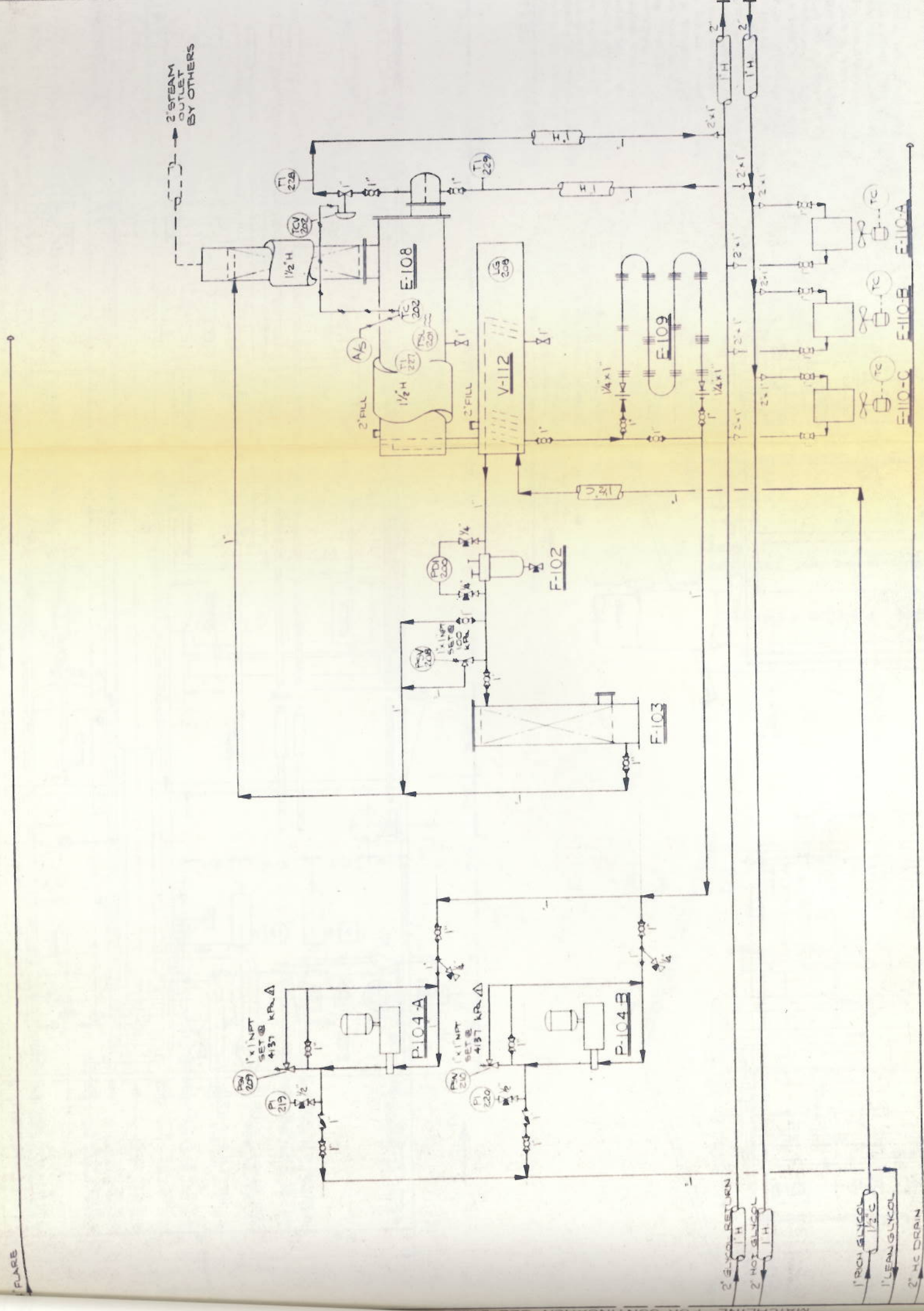
100M BTU/HR DUTY  
REBOILER: 20" OD x 8'-0" LG (E-108)  
ATMOS @ 400°F  
TUBE BUNDLE: 8" x 8'-0" LG TEMAC  
150 PSIG @ 400°F  
SURGE: 20" OD x 4'-0" LG (V-112)  
STILL COLUMN: 5 3/8" OD x 5'-3" LG

**E-109**  
GLYCOL/AIR HEAT EXCHANGER

1/4" OD x 4'-0" LG 4-PASS  
TRANE FIN TUBE

SKID EDGE

FLARE



**LEGEND**

- AS INSTRUMENT GAS SUPPLY
- FE FLOW ELEMENT
- FR FLOW RECORDER
- FI FLOW INDICATOR
- LC LEVEL CONTROLLER
- LV LEVEL CONTROL VALVE
- LG LEVEL GAUGE
- LSL LEVEL SWITCH LOW
- LSH LEVEL SWITCH HIGH
- LSL LEVEL SHUTDOWN-LOW
- LSH LEVEL SHUTDOWN-HIGH
- M FLOW METER
- PI PRESSURE INDICATOR
- PC PRESSURE CONTROLLER
- PV PRESSURE CONTROL VALVE
- PSV PRESSURE SAFETY VALVE
- PSL PRESSURE SWITCH LOW
- PSH PRESSURE SWITCH HIGH
- PR PRESSURE RECORDER
- PDI PRESSURE DIFFERENTIAL INDICATOR
- RO RESTRICTION ORIFICE
- SDN SHUTDOWN VALVE
- TI TEMPERATURE INDICATOR
- TR TEMPERATURE RECORDER
- TC TEMPERATURE CONTROLLER
- TCV TEMPERATURE CONTROL VALVE
- TN THERMOWELL
- TSL TEMPERATURE SWITCH LOW
- TSH TEMPERATURE SWITCH HIGH
- PANEL MOUNTED INSTRUMENT
- BR BALL VALVE
- CV CHECK VALVE
- CV CONTROL VALVE
- GV GATE VALVE
- GV GLOBE VALVE
- GV NEEDLE VALVE
- GV PLUG VALVE
- Y Y-TYPE LINE STRAINER
- RI FLOW ELEMENT/RESTRICTION ORIFICE

NO.	REVISION	DATE	BY	SCALE	APP'D
1	ISSUE FOR CONSTRUCTION	JUNE 21/50			
2	ISSUE FOR INSTRUMENTATION				
3	ISSUE FOR Piping				
4	ISSUE FOR APPROVAL				

**E-110 A/B/C**  
BUILDING HEATERS  
TRANE MODEL 74H  
1/2 HP 1/50/115V X-P MOTOR