

E-106

DE-ETHANIZER REBOILER
 12/24-96 TYPE BKU TEMA C
 150 PSIG / 250 PSIG DP @
 400°F / 250°F + 1/16 CA
 TOI M BTU/HR DUTY + 50% SPARE

V-100

DE-ETHANIZER
 24'00" x 40'0" SM/SM
 250 PSIG DP @ 250°F + 1/16 CA
 PACKED COLUMN - 2 15'-0" SECTIONS
 1/2" CERAMIC INTALOX SADDLES

E-104

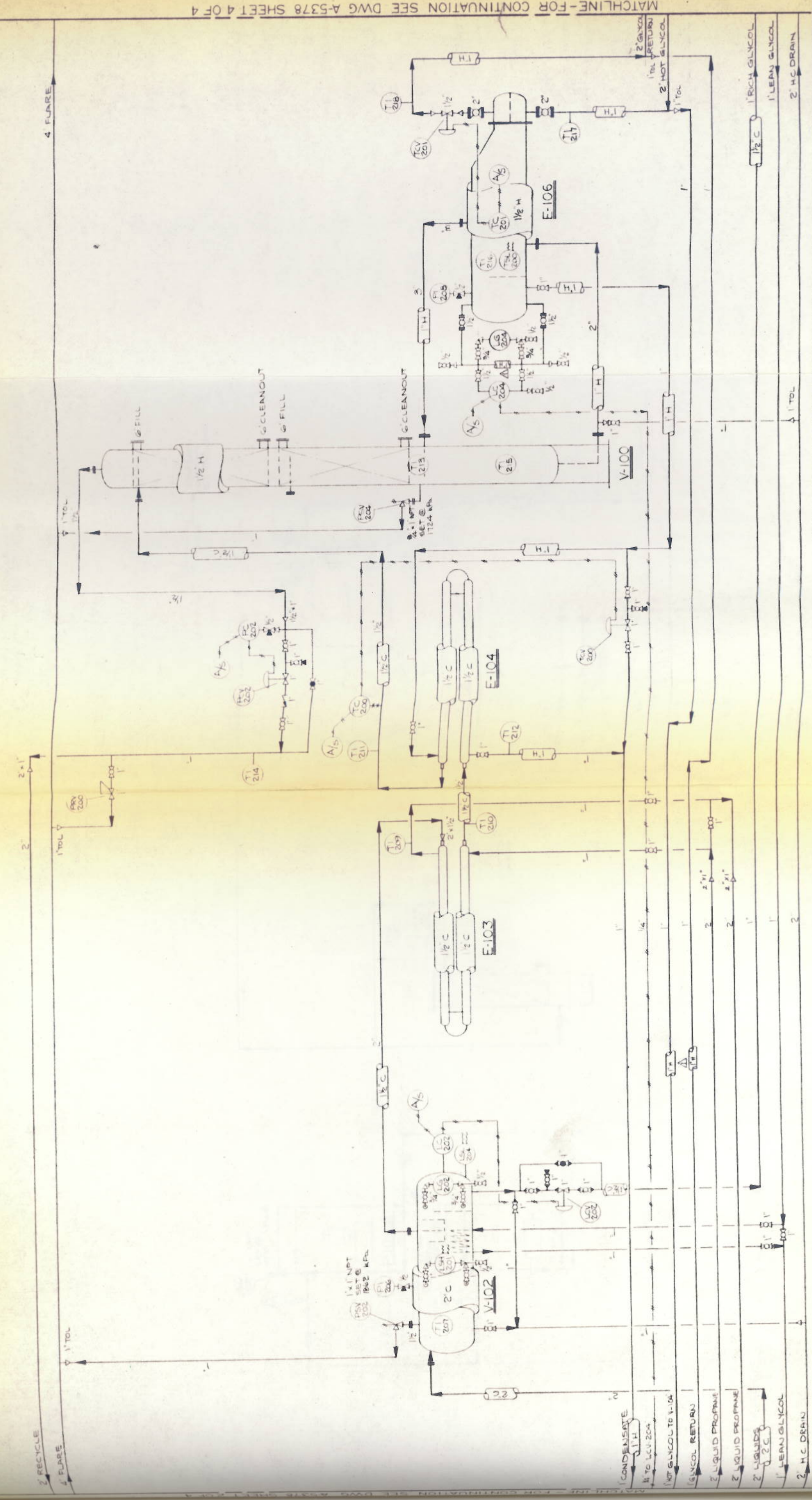
CONDENSATE / CONDENSATE HEAT EXCHANGER
 1 1/2" x 3 1/2" OD x 10'-0" LG
 250 PSIG / 250 PSIG @ 250°F + 1/16 CA
 HAIRPIN, FIN TUBE

E-103

CONDENSATE / PROPANE HEAT EXCHANGER
 1 1/2" x 3 1/2" OD x 10'-0" LG
 250 PSIG / 250 PSIG @ 150°F + 1/16 CA
 HAIRPIN, FIN TUBE

V-102

GLYCOL / HC SEPARATOR
 36" OD x 10'-0" SM/SM
 270 PSIG DP @ 150°F + 1/16 CA
 2-PHASE, HORIZONTAL



NO.	REVISION	DATE	BY	SCALE	DESCRIPTION
1		JUNE 2/89			ISSUE FOR CONSTRUCTION
2					ISSUE FOR INSTRUMENTATION
3					ISSUE FOR APPROVAL

MECHANICAL FLOWSHEET
 DEWPOINT CONTROL FACILITY
 KNOPCIK GAS PLANT
 CUSTOMER: TURBO RESOURCES LTD. DRAWING NO: TR-2624-50
 SHEET 3 OF 4