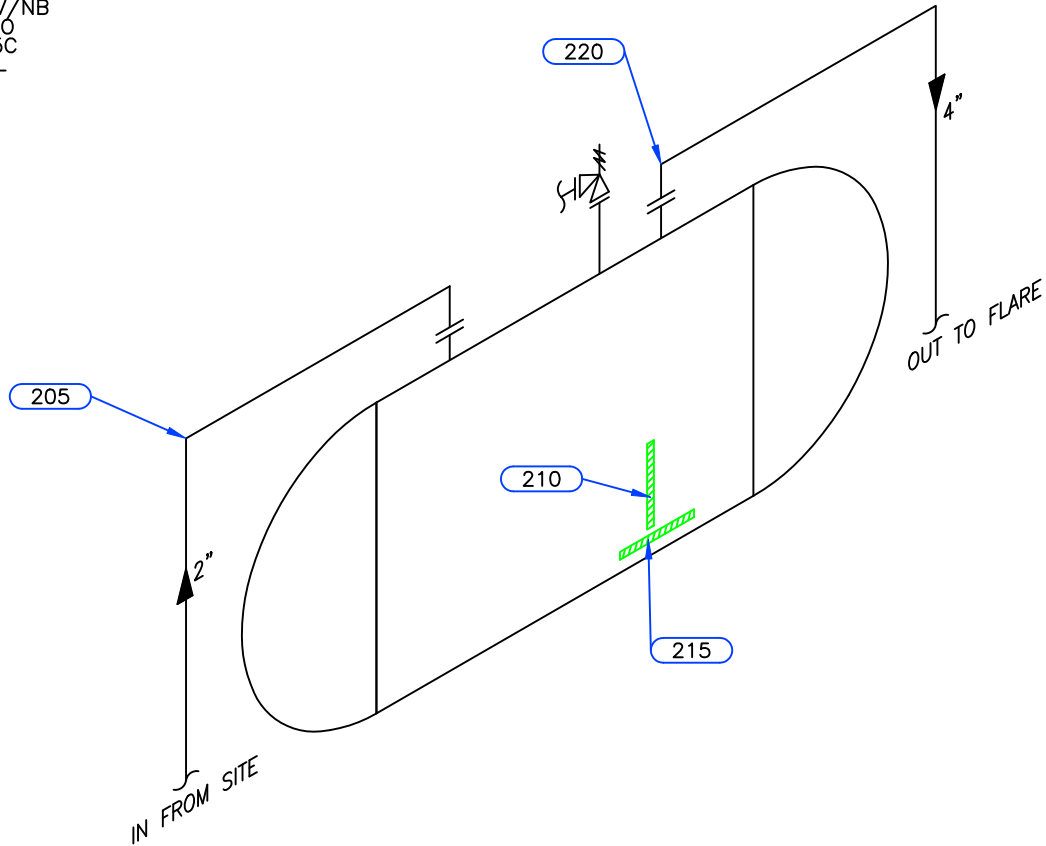


PSV DATA

MFG: FARRIS
 MODEL: 26LA10-120
 SERIAL: CE42987-1-A10
 SET PRES: 1034 kPa
 CAPACITY: 1550 SCFM
 SERVICED BY: UNIFIED
 SERVICE DATE: 09/2010
 SIZE: 3"x4"
 CODE STAMP: UV/NB
 BLOCK VALVE: NO
 CRN: OG 2369.5C
 LOCATION: SHELL
 TAG: 2981G



Equip. No. _____ Prov. Reg. No. Ⓐ C 34778 C.R.N. NON CODE Serial No. PV-96-376-1 Yr. Inst. _____
 Code/Div. NON CODE Size: 6ft x 10ft Manufacturer: GLM TANKS Yr. Blt. 1996
 C. Stamp: _____ Service: SOUR PWHT: NIL Radiography: RT-3 Insulated: YES

Design & Materials Data

HEAD:
 Top Mat'l. SA 36 Top Nom. 6.4mm Top C.A. _____
 Btm. Mat'l. _____ Btm. Nom. _____ Btm. C.A. _____
 CHANNEL:
 Material: _____ Nominal: _____ C.A. _____
 BOOT
 Head Mat'l. _____ Head Nom. _____ Head C.A. _____
 Shell Mat'l. _____ Shell Nom. _____ Shell C.A. _____
 SHELL
 Material: SA 36 Nominal: 6.4mm C.A. _____
 MAWP Shell Side: 103 kPa @ Temp. 343°C
 MAWP Tube Side: _____ @ Temp. _____

| | | |
|----------|--|---------|
| CLIENT | CANADIAN NATURAL RESOURCES | |
| FACILITY | CHOWADE GAS GATHERING LSD b-48-L/94-B-09 | |
| ITEM | FLARE KNOCKOUT DRUM | |
| BY: KM | DATE: 01/2009 | DWG.# 8 |

UTS DATA

CLIENT: CANADIAN NATURAL RESOURCES
EQUIPMENT: KNOCKOUT FLARE
CRN#:
PROV REG: C 34778
TESTED ON STREAM

FACILITY: CHOWADE GAS GATHERING
SERVICE: SOUR
LOCATION: b-48-L/94-B-09
RTD JOB #: 10.112837
REFER TO DRAWING: 8

| Test Point | THICKNESS DATA | | | | Flag | T-Min | C.A. | Nom. | Short Term | Long Term | Ave. mm/py | Retirement Date |
|----------------------------|----------------|---|------|---|------|-------|------|------|------------|-----------|------------|-----------------|
| 205 | | | | | | | | | | | | |
| Description: 2" 90° NOZZLE | | | | | | | | | | | | |
| | 2009 | 1 | 2013 | 3 | | | | | | | | |
| Min. Thick. | 5.5 | | 5.5 | | 4.80 | | .7 | 5.50 | 0 | 0 | | |
| Average: | 5.6 | | 5.6 | | | | | | 0 | 0 | | |
| Analysis: | | | | | | | | | | | | |
| 210 | | | | | | | | | | | | |
| Description: LOWER SHELL | | | | | | | | | | | | |
| | 2009 | 1 | 2013 | 3 | | | | | | | | |
| Min. Thick. | 6.4 | | 6.4 | | 6.40 | | | 6.40 | 0 | 0 | | |
| Average: | 6.5 | | 6.5 | | | | | | 0 | 0 | | |
| Analysis: | | | | | | | | | | | | |
| 215 | | | | | | | | | | | | |
| Description: BOTTOM SHELL | | | | | | | | | | | | |
| | 2009 | 1 | 2013 | 3 | | | | | | | | |
| Min. Thick. | 6.5 | | 6.5 | | 6.40 | | | 6.40 | 0 | 0 | | |
| Average: | 6.6 | | 6.6 | | | | | | 0 | 0 | | |
| Analysis: | | | | | | | | | | | | |
| 220 | | | | | | | | | | | | |
| Description: 4" 90° NOZZLE | | | | | | | | | | | | |
| | 2009 | 1 | 2013 | 3 | | | | | | | | |
| Min. Thick. | 8.1 | | 8.1 | | 7.10 | | | 7.10 | 0 | 0 | | |
| Average: | 8.4 | | 8.4 | | | | | | 0 | 0 | | |
| Analysis: | | | | | | | | | | | | |