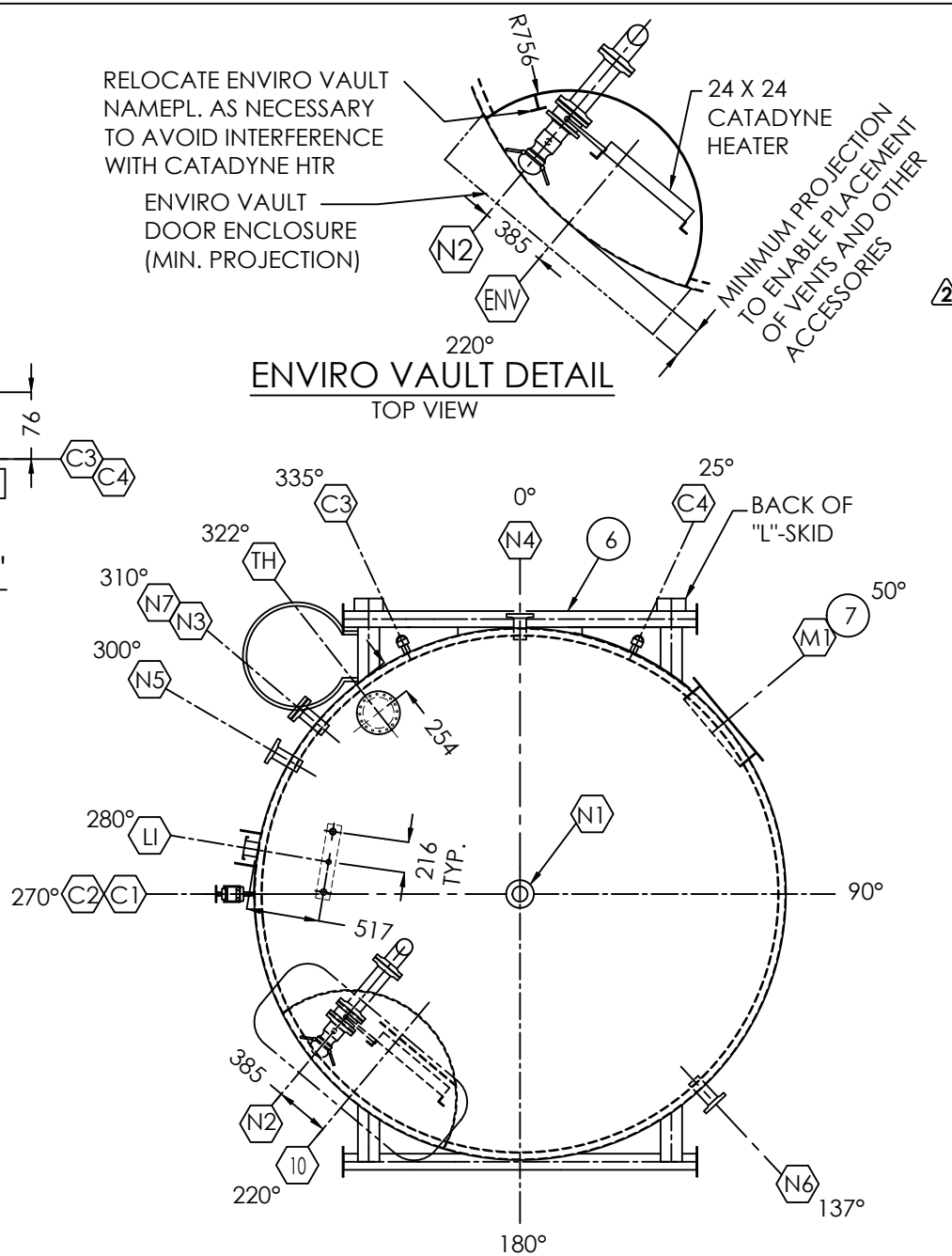


ELEVATION



ENVIRO VAULT DETAIL
TOP VIEW

ORIENTATION

BILL OF MATERIALS

| MARK | QTY | MATL | DESCRIPTION | SERVICE |
|---------|-----|-------|---|-------------------|
| 1 | 1 | A36 | 4.8 PL. x 3862 DIA. FLAT BOTTOM | SECONDARY BOTTOM |
| 2 | 1 | A36 | 6.4 PL. x 3710 DIA. FLAT BOTTOM | PRIMARY BOTTOM |
| 3 | 4 | A36 | 4.8 PL. x 1524 x 11492 LG. SHELLS | PRIMARY SHELL |
| 4 | 4 | A36 | 4.8 PL. x 1524 x 11813 LG. SHELLS | SECONDARY SHELL |
| 5 | 1 | A36 | 4.8 PL. x 3685 DIA. CONED ROOF | PRIMARY ROOF |
| 6 | 1 | A36 | 400 BBL DW L-SKID c/w LADDER & SAFETY HOOP (SEE DWG. B-16336-37-SK FOR DETAILS) | |
| 7 | 1 | | NAMEPLATE & BRACKET | |
| 8 | 2 | A36 | 4.8 x 100 FLAT BAR ROLLED TO 3760 O.D. (HARD WAY) | CLOSURE BAR |
| 9 | 1 | A36 | 400 BBL SAFETY TOE RAIL | |
| 10 | 1 | | ENVIRO VAULT c/w 110V CATADYNE HEATER VAULT HEIGHT EQUAL TO 1473mm | |
| LI | 1 | 316SS | 33 DIA. (1") 3000# NPT FULL CPLG | |
| | 2 | 316SS | 42 DIA. (1 1/4") 3000# NPT FULL CPLG | |
| | | | AMGAS SOUR SERVICE LEVEL GAUGE w/ COMPLETE ASSEMBLY & METRIC LEVEL GAUGE BOARD | |
| M1 | 1 | A36 | 610 x 914 (24" x 36") RECT. MANWAY (RAISED 100mm ABOVE FLOOR) | |
| | 1 | A36 | 762 x 1066 RECTANGULAR MANWAY COVER | |
| TH | 1 | | 219 DIA. (8") ENARDO 660 SOUR SERVICE THIEF HATCH SET @ 12 OZ. PRESS/0.4 OZ VAC. | |
| | 1 | A36 | 8" ARGO FAB. THIEF HATCH EXTENSION | |
| C1 - C2 | 2 | A105 | 21 DIA. (1/2") 3000# NPT FULL CPLG. | SIGHT GLASS CONN. |
| | 2 | | 21 DIA. (1/2") JURGUSON 125 GAUGE COCKS | |
| | 1 | | 16 (5/8") REDLINE GLASS | |
| C3 - C4 | 2 | A105 | 27 DIA. (3/4") 3000# NPT FULL CPLG. c/w NIPPLE, ELBOW, & | SECONDARY VENT |
| | 2 | | 27 DIA. (3/4") FISHER VENT SCREEN | |
| N1 | 1 | A105 | 89 DIA. (3") 150# RFSO FLG. | VENT |
| | 1 | A106 | 89 DIA. (3") SCH STD. SMLS x 172 LG. | |
| N2 | 1 | A105 | 89 DIA. (3") 150# RFSO FLG. | TRUCK OUT |
| | 1 | A106 | 89 DIA. (3") SCH STD. SMLS x 371 LG. (SEE SHT B-16336-37-D1 FOR DETAILS) | |
| N3 | 1 | A105 | 114 DIA. (4") 150# RFSO FLG. | INLET |
| | 1 | A106 | 114 DIA. (4") SCH STD. SMLS x 220 LG. | |
| N4 | 1 | A105 | 89 DIA. (3") 150# RFSO FLG. | DRAIN |
| | 1 | A106 | 89 DIA. (3") SCH STD. SMLS x 220 LG. | |
| N5 | 1 | A105 | 114 DIA. (4") 150# RFSO FLG. | SPARE |
| | 1 | A106 | 114 DIA. (4") SCH STD. SMLS x 220 LG. | |
| N6 | 1 | A105 | 89 DIA. (3") 150# RFSO FLG. | OVERFLOW |
| | 1 | A106 | 89 DIA. (3") SCH STD. SMLS x 220 LG. | |
| N7 | 1 | A105 | 114 DIA. (4") 150# RFSO FLG. | HLSD |
| | 1 | A106 | 114 DIA. (4") SCH STD. SMLS x 220 LG. | |
| | 1 | A105 | 114 DIA. (4") 150# BLIND FLANGE TAPPED 2" NPT | |

| NOZZLES | | | |
|---------|-------|---------|-------------------|
| MARK | PROJ. | ELEV. | NOTES |
| C1 | N/A | 100mm | SIGHT GLASS CONN. |
| C2 | N/A | 914mm | SIGHT GLASS CONN. |
| C3 - C4 | N/A | SEE DWG | SECONDARY VENT |
| N1 | 152mm | ROOF | VENT |
| N2 | 172mm | 1118mm | TRUCK OUT |
| N3 | 152mm | 115mm | INLET |
| N4 | 152mm | 115mm | DRAIN |
| N5 | 152mm | 305mm | SPARE |
| N6 | 152mm | SEE DWG | OVERFLOW |
| N7 | 152mm | SEE DWG | HLSD |

DESIGN NOTES

- TANK TO BE BUILT AND TESTED TO API - 12F SPEC. MODIFIED (**NON LABELLED**).
- ROOF/SHELL JOINTS NOT BE BACKWELDED TO MEET API-2000 SPECS.
- TANK TO BE AIR/SOAP LEAK TESTED TO 1.5 PSI.
- ESTIMATED SHIPPING WEIGHT = 6804 KG. (15000#)
- REFER TO ORIENTATION DRAWING FOR PROPER LOCATION OF ALL NOZZLES, COUPLINGS, ETC.
- ALL DIMENSIONS ARE IN mm.
- STUDS / NUTS / GASKETS : **B7 / 2H / 304SS FLEX**
- SIGHT GLASS TO BE SHIPPED LOOSE.**
- FINAL ELECTRICAL HOOK UP OF HEATER TO BE DONE BY OTHERS.**

INTERNAL & EXTERNAL FINISH

- INTERNAL FINISH**
BLAST: SSPC-SP5 WHITE BLAST USING SIL 7 SAND
COATING: 20 - 40 MILS DFT OF ENVIROLINE EC-376 EPOXY COATING
- EXTERNAL FINISH**
BLAST: SSPC-SP7 BRUSH BLAST USING SIL 7 SAND
INSULATION: 1-1/2" SPRAY URETHANE INSULATION WITH (2) COATS OF BLACK FIRE RETARDANT SEALER
PAINT: ALL PROJECTIONS WITH 1.5 - 2.0 MILS DFT OF BLACK LATEX
- BOTTOM FINISH**
BLAST: SSPC-SP7 BRUSH BLAST USING SIL 7 SAND
INSULATION: 1-1/2" SPRAY URETHANE INSULATION WITH (2) COATS OF BLACK FIRE RETARDANT SEALER

REVISIONS

| NO. | DESCRIPTION | BY | DATE |
|-----|---------------------------|----|----------|
| 2 | CHANGED HEATER TO BE 110V | CY | 11.01.05 |
| 1 | REVISED CUSTOMER NAME | CY | 10.07.05 |
| 0 | ISSUED FOR FABRICATION | WE | 05.10.05 |

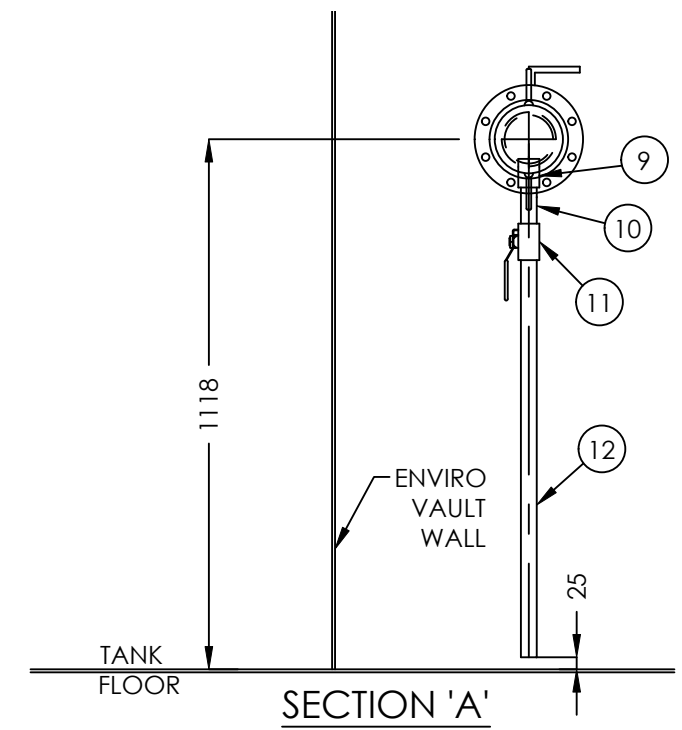
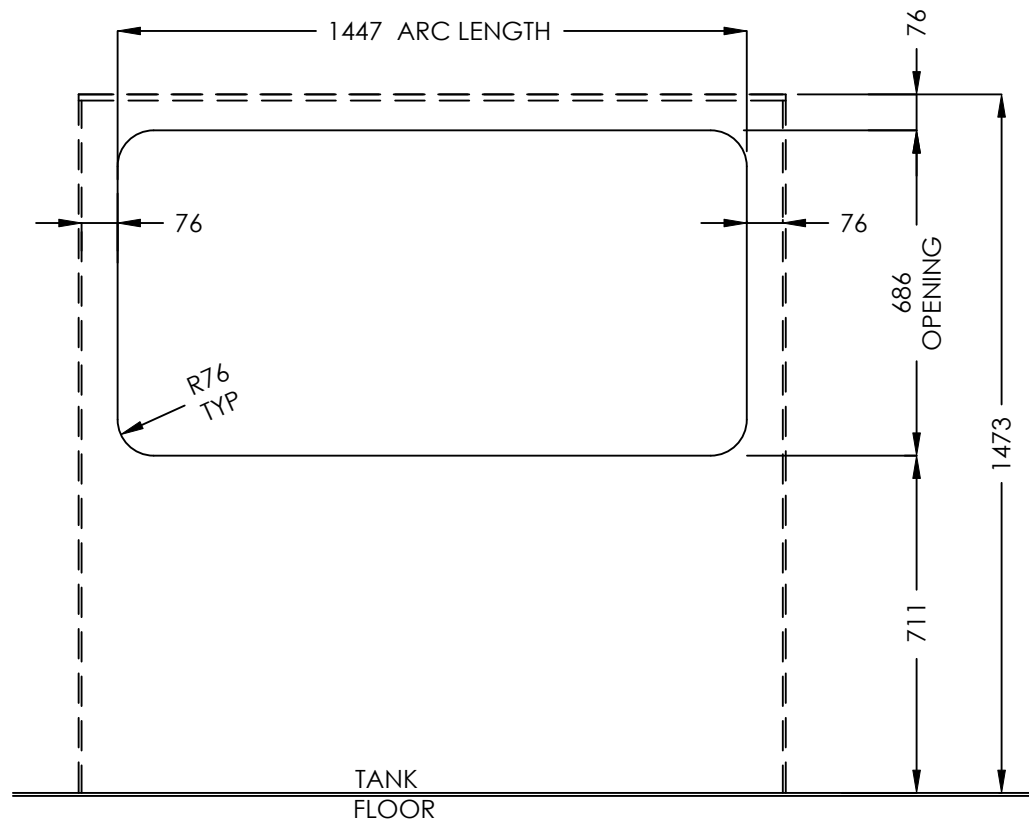
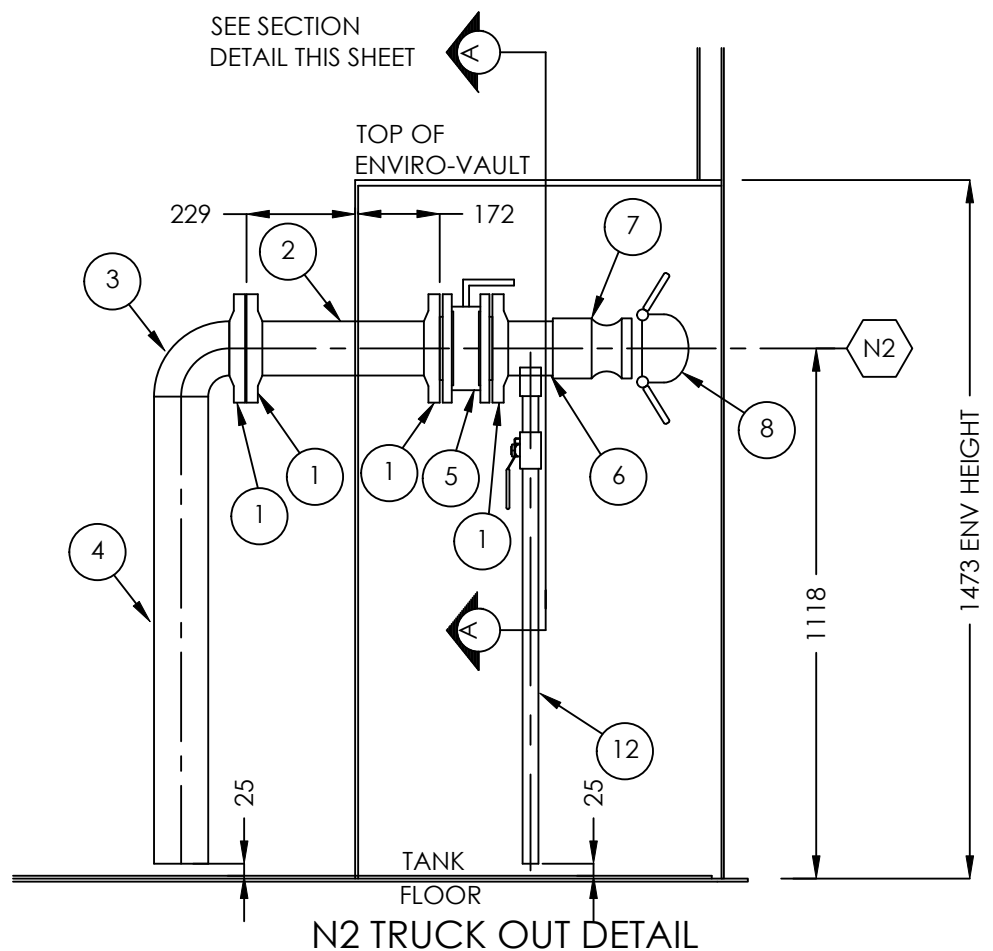
CUSTOMER:

TITLE: ONE (1) 64 CU. M. (400 BBL)
3760 x 6096 HIGH
L-SKIDDED DOUBLE WALL STORAGE TANK W/ CATADYNE HTR

| | | |
|----------------|-------------|----------------------|
| APPROVED BY: | CHECKED BY: | DRAWN BY: RR |
| DATE: 05/06/05 | TAG #: | DRAWING#: B-16336-37 |
| SHEET: 1 OF 3 | SCALE: NTS | SERIAL#: 16336-37 |

QUOTE #: **2**

TITLE: 400 BBL L-SKIDDED DOUBLE WALL STORAGE TANK W/ CATADYNE HTR
TOQ05



| BILL OF MATERIALS | | | | |
|-----------------------|-----|-------|--|---------|
| MARK | QTY | MAT'L | DESCRIPTION | SERVICE |
| N2 - TRUCK OUT | | | | |
| 1 | 4 | A105 | 89 DIA. (3") 150# RFSO FLG. | |
| 2 | 1 | A106 | 89 DIA. (3") SCH 40 SMLS PIPE x 371 LG. | |
| 3 | 1 | A234 | 89 DIA. (3") SCH 40 90° LRWE | |
| 4 | 1 | A106 | 89 DIA. (3") SCH 40 SMLS PIPE x 985 LG. | |
| 5 | 1 | | 89 DIA. (3") BUTTERFLY VALVE | |
| 6 | 1 | A106 | 89 DIA. (3") SCH 40 SMLS PIPE x 102 LG. | |
| 7 | 1 | | 89 DIA. (3") MALE CAMLOCK CONNECTION | |
| 8 | 1 | | 89 DIA. (3") CAMLOCK DUST CAP | |
| 9 | 1 | A105 | 33 DIA. (1") 3000# FULL CPLG. | |
| 10 | 1 | A105 | 33 DIA. (1") THR'D NIPPLE x 76 LG. | |
| 11 | 1 | | 33 DIA. (1") NAVCO-NUTRON ECONOMY BAR STOCK 2000# THR'D BALL VALVE NACE SPEC. | |
| 12 | | A106 | 33 DIA. (1") THR'D PIPE x 845 LG. | |

| NOZZLES | | | |
|---------|-------|--------|-----------|
| MARK | PROJ. | ELEV. | NOTES |
| N2 | 172mm | 1118mm | TRUCK OUT |
| | | | |
| | | | |
| | | | |
| | | | |
| | | | |
| | | | |
| | | | |

DESIGN NOTES

- REFER TO ORIENTATION DRAWING FOR PROPER LOCATION OF ALL NOZZLES, COUPLINGS, ETC.
- ALL DIMENSIONS ARE IN mm.
- ALL ELEVATIONS TAKEN FROM TOP OF TANK FLOOR

| INTERNAL & EXTERNAL FINISH | | | |
|----------------------------|------------------------|----|----------|
| REVISIONS | | | |
| NO. | DESCRIPTION | BY | DATE |
| 1 | REVISED CUSTOMER NAME | CY | 10.07.05 |
| 0 | ISSUED FOR FABRICATION | WE | 05.10.05 |

CUSTOMER:

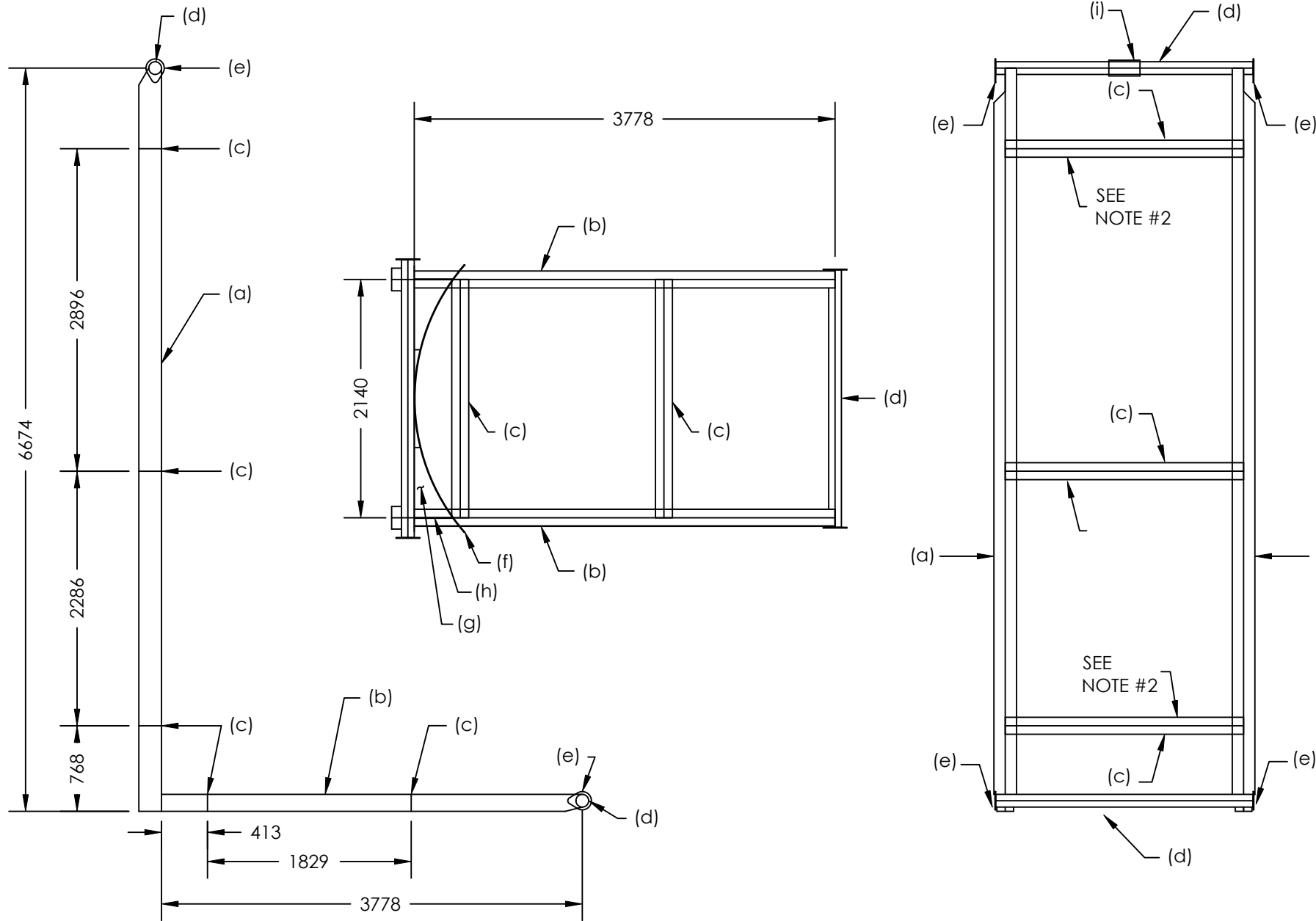
TITLE: PIPING DETAIL

APPROVED BY: [Signature] CHECKED BY: DRAWN BY: RR

DATE: 05.06.05 TAG #: - DRAWING#: B-16336-37_D1 REV. 1

SHEET: 2 OF 3 SCALE: NTS SERIAL#: 16336-37

CUSTOMER: PIPING DETAIL TITLE: TQ05- QUOTE #:



BILL OF MATERIALS

| MARK | QTY | MAT'L | DESCRIPTION | SERVICE |
|------|-----|-------|---|---------------|
| a | 2 | A36 | W200 x 27 WIDE FLANGE x 6674 LG. SKID RUNNER | |
| b | 2 | A36 | W150 x 22 WIDE FLANGE x 3778 LG. SKID RUNNER | |
| c | 5 | A36 | W150 x 22 WIDE FLANGE x 2140 LG. CROSS MEMBER | |
| d | 2 | A36 | 114 DIA. (4") COMMERCIAL GRADE ROLL BAR x 2311 LG. | |
| e | 4 | A36 | LARGE TEARDROPS | |
| f | 1 | A36 | 6 THK. PLATE x 100 WIDE ROLLED TO 1829 x 2610 LG. | |
| g | 2 | A36 | 6 THK. PLATE x 343 LG. END STIFFENER | |
| h | 2 | A36 | 6 THK. PLATE x 343 LG. x 635 WIDE GUSSET | |
| i | 1 | A36 | 140 DIA. (5") SCH. 40 x 279 LG. PIPE | SWIVEL SLEEVE |

| | | | | |
|--|--|--|--|--|
| | | | | |
| | | | | |
| | | | | |
| | | | | |
| | | | | |
| | | | | |
| | | | | |
| | | | | |
| | | | | |
| | | | | |
| | | | | |
| | | | | |
| | | | | |
| | | | | |
| | | | | |
| | | | | |
| | | | | |
| | | | | |
| | | | | |
| | | | | |
| | | | | |
| | | | | |
| | | | | |
| | | | | |
| | | | | |
| | | | | |
| | | | | |
| | | | | |
| | | | | |

NOZZLES

| MARK | PROJ. | ELEV. | NOTES |
|------|-------|-------|-------|
| | | | |
| | | | |
| | | | |
| | | | |
| | | | |
| | | | |
| | | | |
| | | | |
| | | | |
| | | | |
| | | | |
| | | | |
| | | | |
| | | | |
| | | | |
| | | | |
| | | | |
| | | | |
| | | | |
| | | | |
| | | | |
| | | | |
| | | | |
| | | | |
| | | | |
| | | | |

DESIGN NOTES

1) ALL DIMENSIONS ARE IN mm.
 2) TORCH CUT 1" DIA. DRAIN HOLES INTO ITEM "C".

INTERNAL & EXTERNAL FINISH


SKID FINISH
 BLAST: SS-SP7 BRUSH BLAST USING SIL 7 SAND
 PRIME: 1.5 - 2.0 MILS DFT OF CLOVERDALE TOWER OR RUSTEX #71024 GRAY PRIMER
 PAINT: 1.5 - 2.0 MILS DFT OF BLACK LATEX

| NO. | DESCRIPTION | BY | DATE |
|-----|------------------------|----|----------|
| 1 | REVISED CUSTOMER NAME | CY | 10.07.05 |
| 0 | ISSUED FOR FABRICATION | WE | 05.10.05 |

CUSTOMER:

TITLE:

400 BBL DW L-SKID

APPROVED BY:  CHECKED BY: DRAWN BY: RR

DATE: 05/06/05 TAG #: - DRAWING #: B-16336-37_SK

SHEET: 3 OF 3 SCALE: NTS SERIAL #: 16336-37

CUSTOMER:

400 BBL DW L-SKID

TITLE:

TQ05-

QUOTE #: