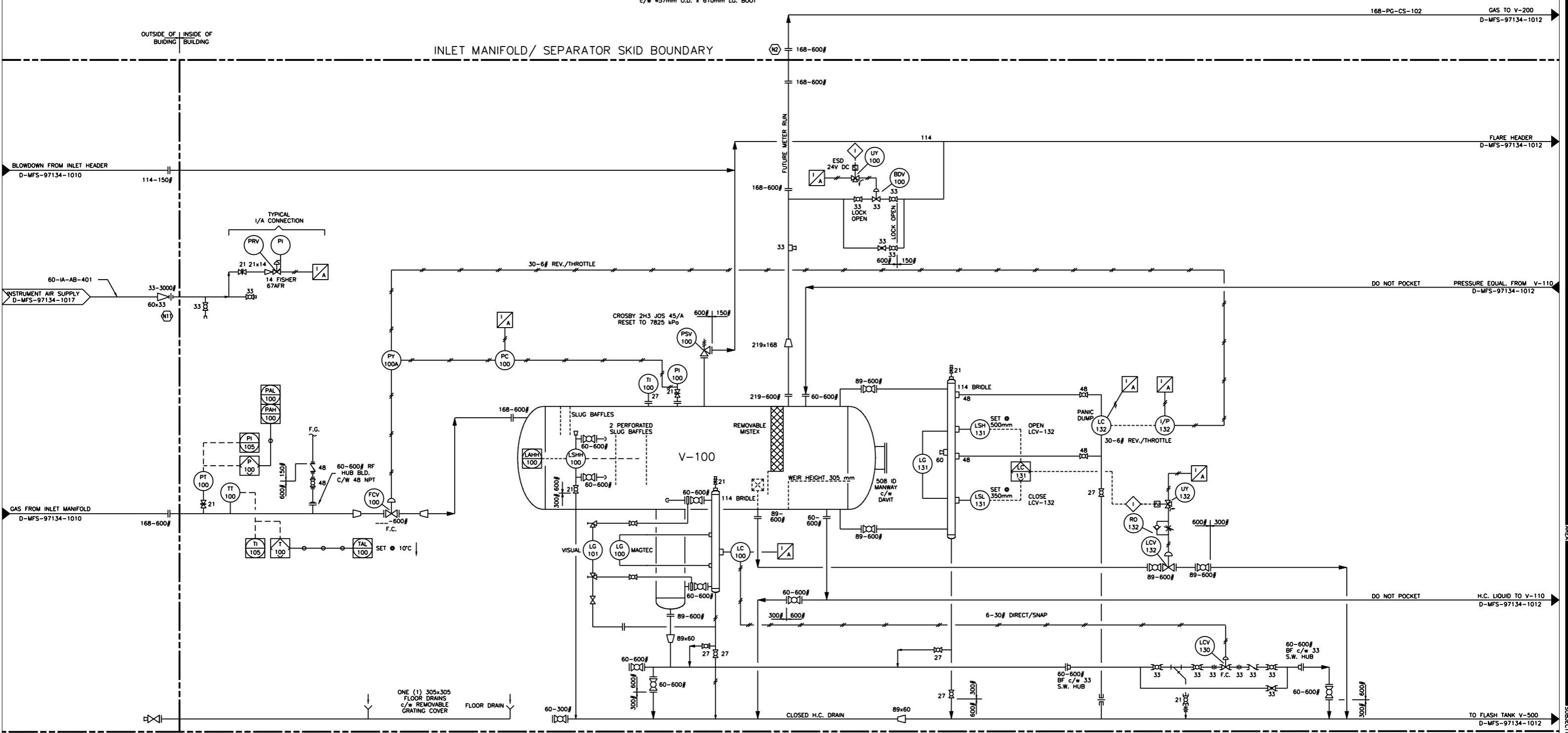


V-100

INLET SEPARATOR

1220mm ID x 4880mm S/S MIN.
 D.P.: 7825 kPa @ 49°C/-27°C - (NEW AND COLD FOR 50mm SHELL)
 3 PHASE
 C.A.: 3.2mm
 c/w 457mm O.D. x 610mm LG. BOOT



NOTE:
 ALL PROCESS, VENTS & DRAINS, PIPING, VALVES,
 AND FITTINGS TO BE AS OR CS CLASSIFICATION.

DRAWING No.	REFERENCE DRAWINGS	No.	REVISION	DATE	BY	CHK'D	APP'D	APP'D	DATE
		2	AS-BUILT	98-04-01	RJO				97-06-23
		1	DWG NO. HAS CHANGED FROM 1013 TO 1011	98-02-15	CDK				
		0	ISSUED FOR CONSTRUCTION	97-10-27	CDK	LP			
		B	ISSUED FOR TENDER	97-10-01	CDK	LP			
		A	ISSUED FOR APPROVAL	97-06-23	OFF				

RED CREEK GAS DEVELOPMENT

MECHANICAL FLOWSHEET
 INLET SEPARATOR/ BLOWCASE
 LSD. 15-01-86-22 W6M

1 0 F 1 SCALE NONE

NUMAC ENERGY
 Numac Energy Inc.

15-01-86-22 W6M

D-MFS-97134-1011

P:\98300\DWGS\97134\DWGS\71341011.DWG
 PLOTTED: MAY 05, 1999 12:11 PM

Uncontrolled When Printed