

GENERAL NOTES:

- 1. ALL OPENINGS TO BE COVERED PRIOR TO SHIPPING
- 2. VESSEL TO BE POLY WRAPPED WITH 8.5 mil WHITE SHRINKABLE POLY WRAP, INCLUDING 7 DIFFUSERS (REPLACEMENT DESSICANT)
- 3. NITROGEN BLANKET REQUIRED, NITROGEN TO BE PRESSURIZED AT 2 PSI [14 kPa]  
GAS IN NOZZLE N1, GAS OUT NOZZLE N6B
- 4. NITROGEN WARNING LABEL TO BE ATTACHED ON INSULATION CLADDING PRIOR TO SHIPPING
- 5. APPROXIMATE SHIPPING WEIGHT: 42,000 LBS [19,050 kg]
- 6. APPROXIMATE SHIPPING DIMENSIONS: 16'-6" [5030mm] W x 15'-11" [4851mm] H x 30'-4" [9246mm] LG

INSULATION DETAILS:

- 1. MATERIALS:  
INSULATION: 3" THK MINERAL WOOL TANK WRAP, BOTTOM HEAD AND 2' OF SHELL NOT TO BE INSULATED
- CLADDING:  
SHELL: 0.024" [0.61mm] THK, 1-1/4" [32mm] X 1/4" [6.4mm] CORRUGATED METAL JACKETING  
AL ALLOY 3003-H14 OR 5005-H14 FACTORY APPLIED POLYSURLYN, MOISTURE BARRIER PERMANENTLY BONDED TO THE INSIDE (OR EQUIVALENT)  
HEAD: 0.024" [0.61mm] THK SMOOTH ALUMINUM  
BANDING: 0.020" [0.51mm] THK x 3/4" [19mm] WIDE 304SS  
SCREWS: #8 x 1/2" [13mm] LONG SELF TAPPING ROBERTSON HEAD 304SS
- 2. INSULATION SHALL BE APPLIED WITH A STAGGERED JOINT ARRANGEMENT
- 3. INSULATION IS TO BE SECURED IN PLACE BY 0.020" [0.51mm] THK x 3/4" [19mm] WIDE 304SS BANDING ON 12" CENTERS.
- 4. CLADDING LONG SEAMS TO BE STAGGERED.
- 5. CIRC AND LONG SEAM CLADDING ARE TO BE LAPPED A MINIMUM OF 2".
- 6. CLADDING IS TO BE SECURED IN PLACE BY MACHINE STRETCHED BANDS ON 12" CENTERS, BREATHER SPRINGS SHALL BE FLAT, SPIRAL WOUND, TYPE 304SS SPRINGS, COMPLETE WITH PROTECTIVE BAND LOOP, PREVENTING OVER EXTENSION.
- 7. NAMEPLATES, NOZZLES, FLANGES AND WEEP-HOLE NIPPLES SHALL NOT BE INSULATED.

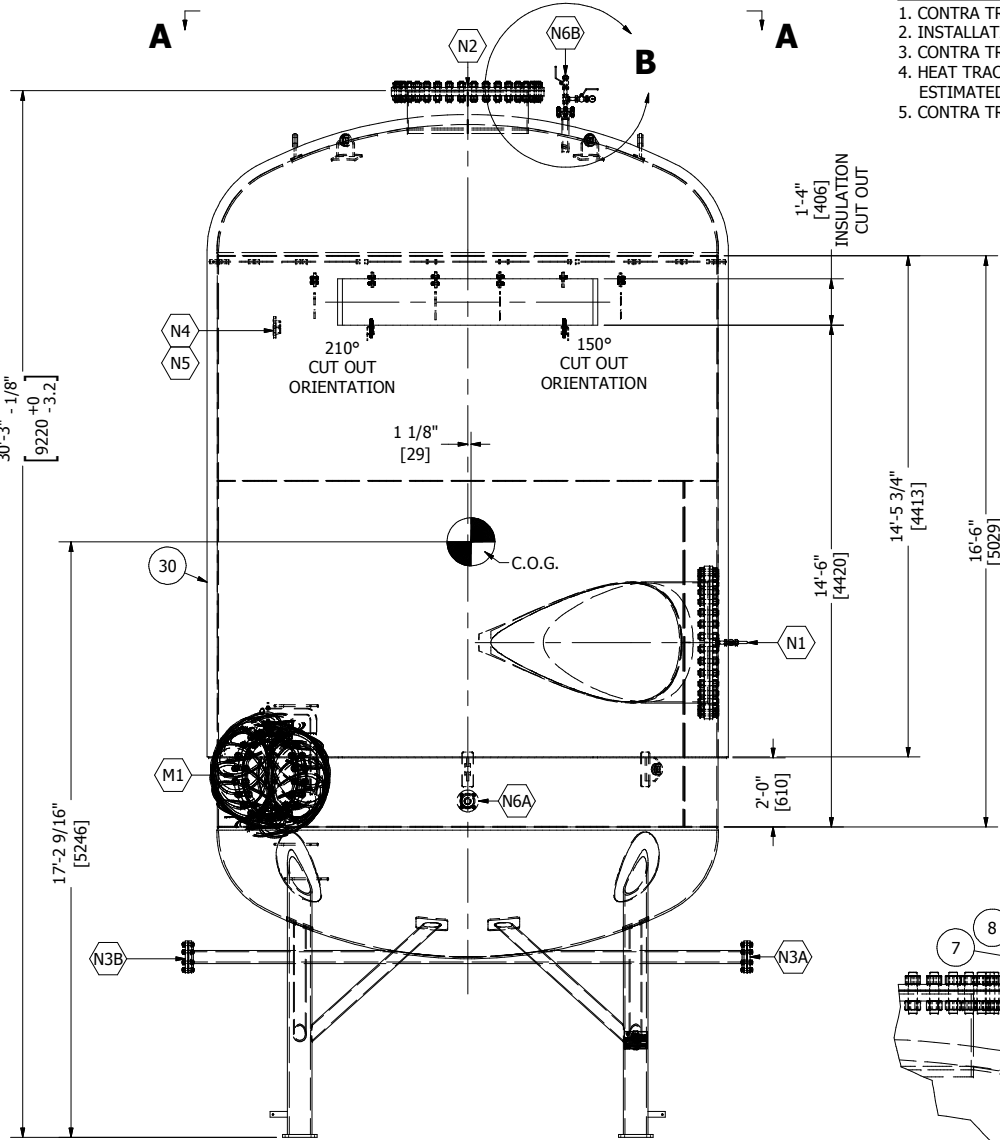
HEAT TRACE NOTES:

- 1. CONTRA TRACE MATERIALS TO BE SUPPLIED BY WESTCOAST ENERGY
- 2. INSTALLATION DRAWINGS PROVIDED BY CSI (CONTROLS SOUTH INC)
- 3. CONTRA TRACE TO BE INSTALLED BY BILTON
- 4. HEAT TRACING DETAILS TO FOLLOW ONCE PROVIDED BY CSI  
ESTIMATED MATERIALS: 12 PANELS, 48 HANGERS & 96 BOSSES
- 5. CONTRA TRACE INSULATION IS TO BE DONE ON SITE BY OTHERS

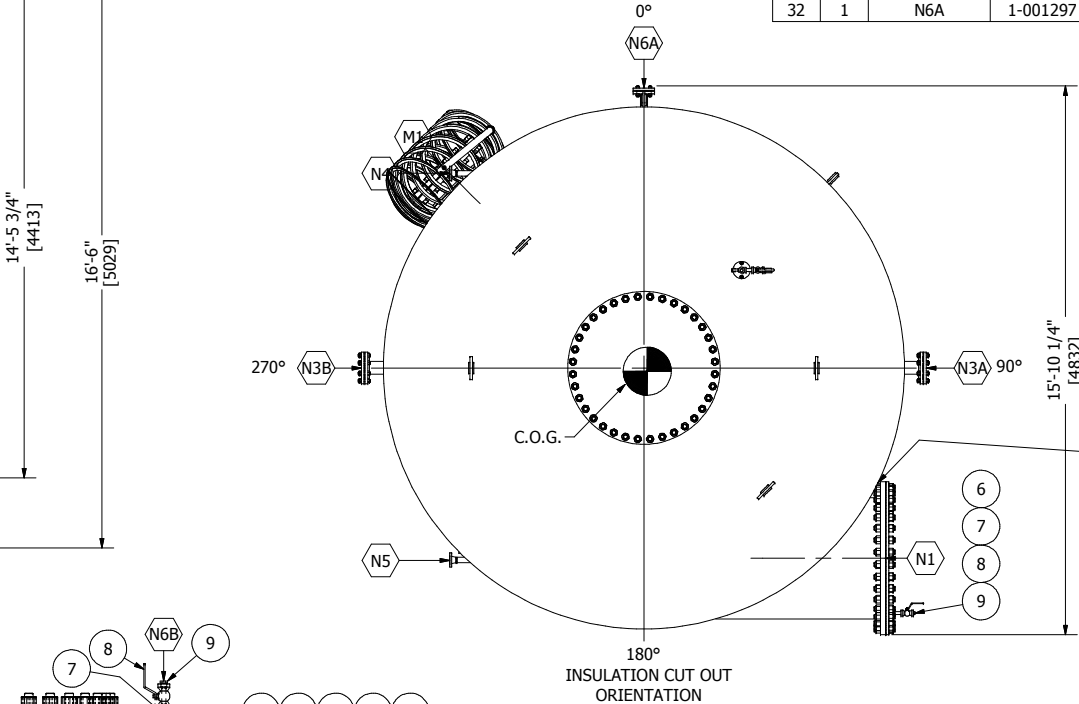
BILL OF MATERIALS

ITEM	QTY	REF.	PART No.	DESCRIPTION	LENGTH	MATERIAL	WEIGHT (lbs)
1	1		-	ATTACHMENTS (SEE DRAWING - 301 FOR DETAILS)			35036.04
3	40	M1	1-001882	1 1/4" DIA HEX NUT		SA-194-2HM	35.12
4	21	M1	1-001306	24" x CLASS 150 RF "CG" GRAPHITE FILLED GASKET		316SS	112.78
5	1	N1	-	FLANGE BLIND - 42" NPS FF 1" THK X 53" OD C/W 2" H.CPLG (SEE DRAWING - 201 FOR DETAILS)			606.36
6	1	N1	1-000293	2" x 3/4" NPT HEX BUSHING		SA-105-N	1.41
7	4	N1,N6B	1-001760	3/4" NIPPLE SCH XH/80 x 3" LG	3"	SA-106-B	1.46
8	3	N1,N6B	1-003606	3/4" BALL VALVE BAR STOCK		SA-36	9.69
9	2	N1,N6B	1-001962	3/4" NPT HEX HEAD PLUG		SA-105-N	0.51
10	1	N2	2-010900	FLANGE BLIND 42" NPS FF 1" THK x 53" OD		SA-36	606.04
11	2	N1,N2	1-020059	GASKET 42" CL150 SER A, 1/8" THK x 53" OD		NEOPRENE	17.90
12	72	N1,N2	1-005982	1 1/2" DIA x 7" LG STUD		SA-193-B7M	259.54
13	144	N1,N2	1-001887	1 1/2" DIA HEX NUT		SA-194-2HM	209.39
14	16	N3A/B	1-002641	3/4" DIA x 4" LG STUD		SA-193-B7M	8.21
15	32	N3A/B	1-001872	3/4" DIA HEX NUT		SA-194-2HM	6.81
16	2	N3A/B	1-001302	6" x CLASS 150 RF "CG" GRAPHITE FILLED GASKET		316SS	1.44
17	2	N3A/B	1-000925	6" x CLASS 150 RF BLIND FLG		SA-105-N	50.16
18	8	N6A/B	1-002627	5/8" DIA x 3 1/2" LG STUD		SA-193-B7M	2.49
19	16	N6A/B	1-001868	5/8" DIA HEX NUT		SA-194-2HM	2.08
20	1	N6A/B	1-001292	2" x CLASS 150 RF "CG" GRAPHITE FILLED GASKET		316SS	0.27
21	1	N6A	1-000891	3" x CLASS 150 RF BLIND FLG		SA-105-N	10.95
22	1	NAME PLATE	1-001708	6" x 8" NAMEPLATE		304SS	0.50
23	1	MISTEX PAD	1-019871	MISTEX PAD JCI STYLE 83, 144" OD		316SS	600.00
24	1	N6B	1-002999	3/4" x CL3000 THRD TEE		SA-105-N	1.44
25	1	N6B	1-000279	3/4" x 1/4" NPT HEX BUSHING		SA-105-N	0.18
26	1	N6B	1-005857	2-1/2" FACE PRESSURE GAUGE, 1/4" NPT BTM (WIKA SERIES 233.53 0-10 PSI)		304SS	1.47
27	1	N6A	1-003964	2" x CLASS 150 RF BLIND FLG TAPPED TO 3/4" NPT		SA-105-N	5.68
28	1	INSULATION	1-008329	INS ALUM CLAD 0.024" SMOOTH, POLYSURLYN COATED (HEAD) (1.16 ROLL)			
29	27	INSULATION	1-020024	INS ALUM CORR 0.024" SMOOTH, POLYSURLYN COATED (SHELL)			
30	1	INSULATION	1-009369	INSULATION - 3" THICK (1050 FT²)		MINERAL WOOL TANK WRAP	2132.32
31	15	INSULATION	1-001556	INS BANDING CHILL SPRING - INS-SPRINGS-1		SS	
32	1	N6A	1-001297	3" x CLASS 150 RF "CG" GRAPHITE FILLED GASKET		316SS	0.37

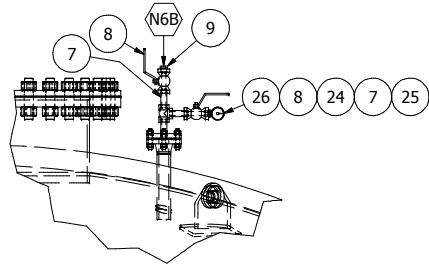
39720.62



ELEVATION VIEW  
(INTERNALS REMOVED FOR CLARITY)

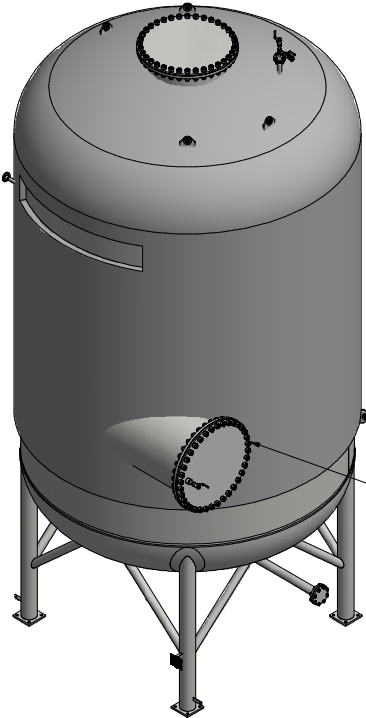


VIEW A-A



DETAIL B

MODIFY INSULATION TO PROVIDE  
CLEARANCE IN ORDER TO  
TIGHTEN FLANGE STUDS & NUTS



MODIFY INSULATION TO PROVIDE  
CLEARANCE IN ORDER TO  
TIGHTEN FLANGE STUDS & NUTS

ISOMETRIC VIEW



FEBRUARY 13, 2017



BOX 6106  
5815 37 Street  
INNISFAIL, AB  
CANADA  
403-227-7799  
1-888-227-4923  
FAX 227-7796

This drawing is property of BILTON WELDING AND MANUFACTURING LTD and is lent to the recipient for their confidential use only. In consideration of the loan of this drawing, the recipient promises and agrees that it shall not be used in any way detrimental to the interests of BILTON WELDING AND MANUFACTURING LTD, that it shall be returned upon request, and shall not be reproduced, copied, lent, or otherwise disposed of, directly or indirectly, without the written consent of BILTON WELDING AND MANUFACTURING LTD.

WESTCOAST ENERGY INC.

174" OD x 16'-6" [4420mm x 5029mm] SULPHUR TAIL GAS COALESCER- TAG#: PV 17.43A  
FINAL ASSEMBLY

QUOTE NUMBER: 07961	SALE ORDER: 004470	
PURCHASE ORDER: 2850038875	JOB ORDER:	SIZE
LOCATION: CHETWYND, BC	D3468	D
DATE: 03/15/2016	DRAWING NO.:	REV.
SHEET: 1 OF 8	D3468-101	2
CRN DWG: N/A		
CRN NUMBER: N/A		