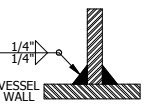
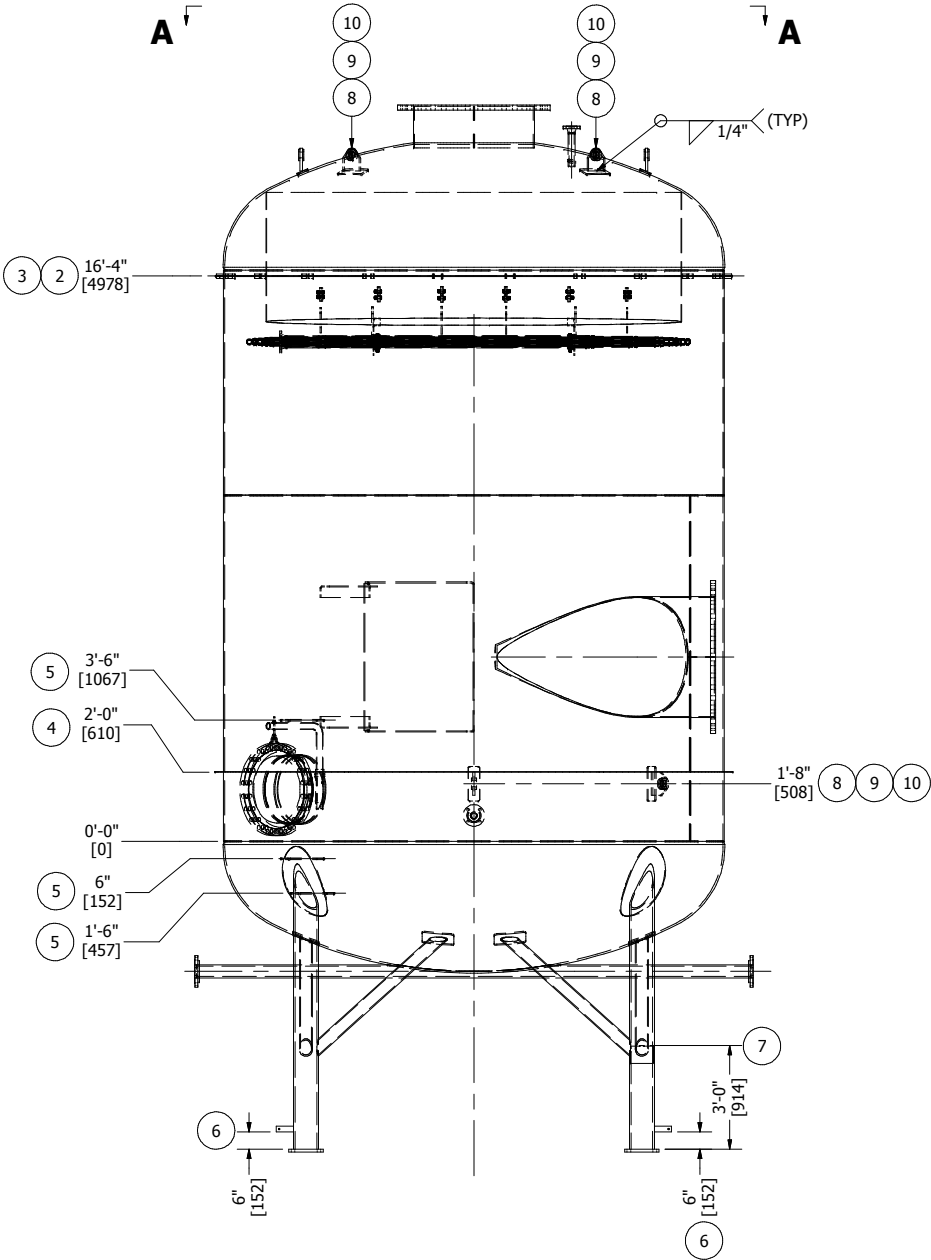


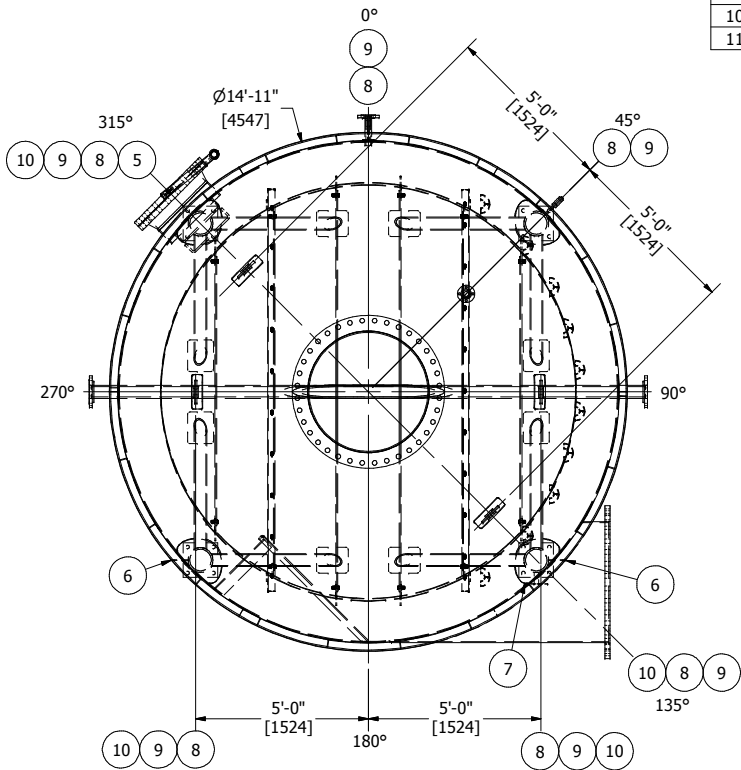
FILE PATH: C:\Workspace\Drafting\Projects\D3400-3499\D3468\D3468.idw

1	ATTACHMENTS
	

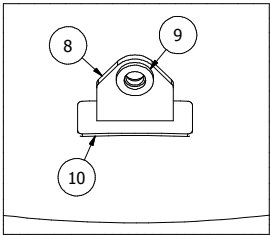
REGISTERED WELDING PROCEDURE NUMBER				
WELD DETAIL	ROOT	HOT PASS	FILL AND CAP	GOUGE/BACKWELD
1 (CS)	-	-	BWM-16/5	N/A
1 (CS-SS)	-	-	BWM-32	N/A



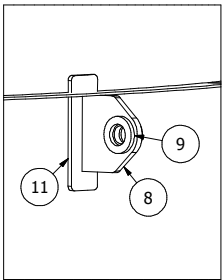
ELEVATION VIEW



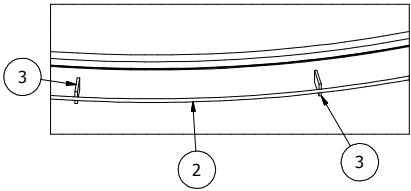
VIEW A-A  
(REMOVED HEATING COIL FOR CLARITY)



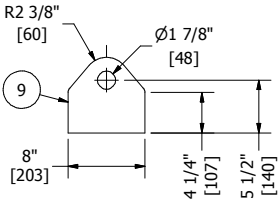
LIFT LUG DETAIL  
(ISOMETRIC)



TAIL LUG DETAIL  
(ISOMETRIC)



INSULATION RING DETAIL  
(ISOMETRIC)



LIFT/TAIL LUG DETAIL  
(QTY REQ: 6X)  
(17 TON SHACKLE)



FEBRUARY 13, 2017

BILL OF MATERIALS							
ITEM	QTY	REF.	PART No.	DESCRIPTION	LENGTH	MATERIAL	WEIGHT (lbs)
1	1		-	VESSEL ASSEMBLY (SEE DRAWING -201 FOR DETAILS)			34765.54
2	1	INSULATION	1-001429	3/8" DIA HRR BAR, ROLLED TO 179" ID	47'- 5/8"	SA-36	17.69
3	22	INSULATION	2-002705	CLIP 1/4" THK x 1 1/2" W x 2 1/2" LG		SA-516-70N	5.86
4	6	INSULATION	2-010894	INSULATING BARRIER 1/4" THK x 174" ID x 179" OD - 6 SEGMENTS		SA-516-70N	118.58
5	3	MANWAY	1-006539	5/8" DIA MANWAY HANDLE/RUNG	2'-0"	SA-479-304L	6.67
6	2	GROUND LUG	2-000228	GROUND LUG 1/4" THK x 2" W x 6" LG w/ HOLE		SA-36	1.68
7	1	NAME PLATE	2-000219	6" x 8" NAMEPLATE BRACKET		A-1011	2.07
8	6	LIFT/TAIL LUG	2-010895	LIFT/TAIL LUG: 3/4" THK x 8" W x 7 3/8" LG		SA-516-70N	64.06
9	12	CHEEK PLATES	2-006816	1/2" THK x 3 7/8" OD x 2 1/4" ID		SA-516-70N	13.34
10	4	LIFT LUG	2-010896	REPAD 4"W x 12"L x 1/2"THK		SA-516-70N	27.10
11	2	TAIL LUG	2-010896	REPAD 4"W x 12"L x 1/2"THK		SA-516-70N	13.45
							35036.04

REV	DATE	DESCRIPTION	BY	ENG	PM	APP
A	4/7/2016	ISSUED FOR APPROVAL	AD	JAM	JDW	
B	6/6/2016	REVISED AS PER CLIENT MARK UPS, REMOVED CROSS MEMBERS, ISSUED FOR APPROVAL	AD	JAM	JDW	
0	7/4/2016	ISSUED FOR FABRICATION	AD	JAM	JDW	
1	8/18/16	RE-ISSUED FOR FABRICATION	AMC	JAM	JDW	
2	02/10/2017	AS-BUILT	NHH	JAM	JDW	



This drawing is property of BILTON WELDING AND MANUFACTURING LTD and is lent to the recipient for their confidential use only. In consideration of the loan of this drawing, the recipient promises and agrees that it shall not be used in any way detrimental to the interests of BILTON WELDING AND MANUFACTURING LTD, that it shall be returned upon request, and shall not be reproduced, copied, lent, or otherwise disposed of, directly or indirectly, without the written consent of BILTON WELDING AND MANUFACTURING LTD.

BOX 6106  
5815 37 Street  
INNISFAIL, AB  
CANADA  
403-227-7799  
1-888-227-4923  
FAX 227-7796

WESTCOAST ENERGY INC.			
174" OD x 16'-6" [4420mm x 5029mm] SULPHUR TAIL GAS COALESCER- TAG#: PV 17.43A ATTACHMENTS			
QUOTE NUMBER: 07961	SALE ORDER: 004470		
PURCHASE ORDER: 2850038875	JOB ORDER:	SIZE	
LOCATION: CHETWYND, BC	D3468		D
DATE: 03/15/2016			
SHEET: 6 OF 8	DRAWING NO.:	REV.	
CRN DWG: N/A	D3468-301		2
CRN NUMBER: N/A			