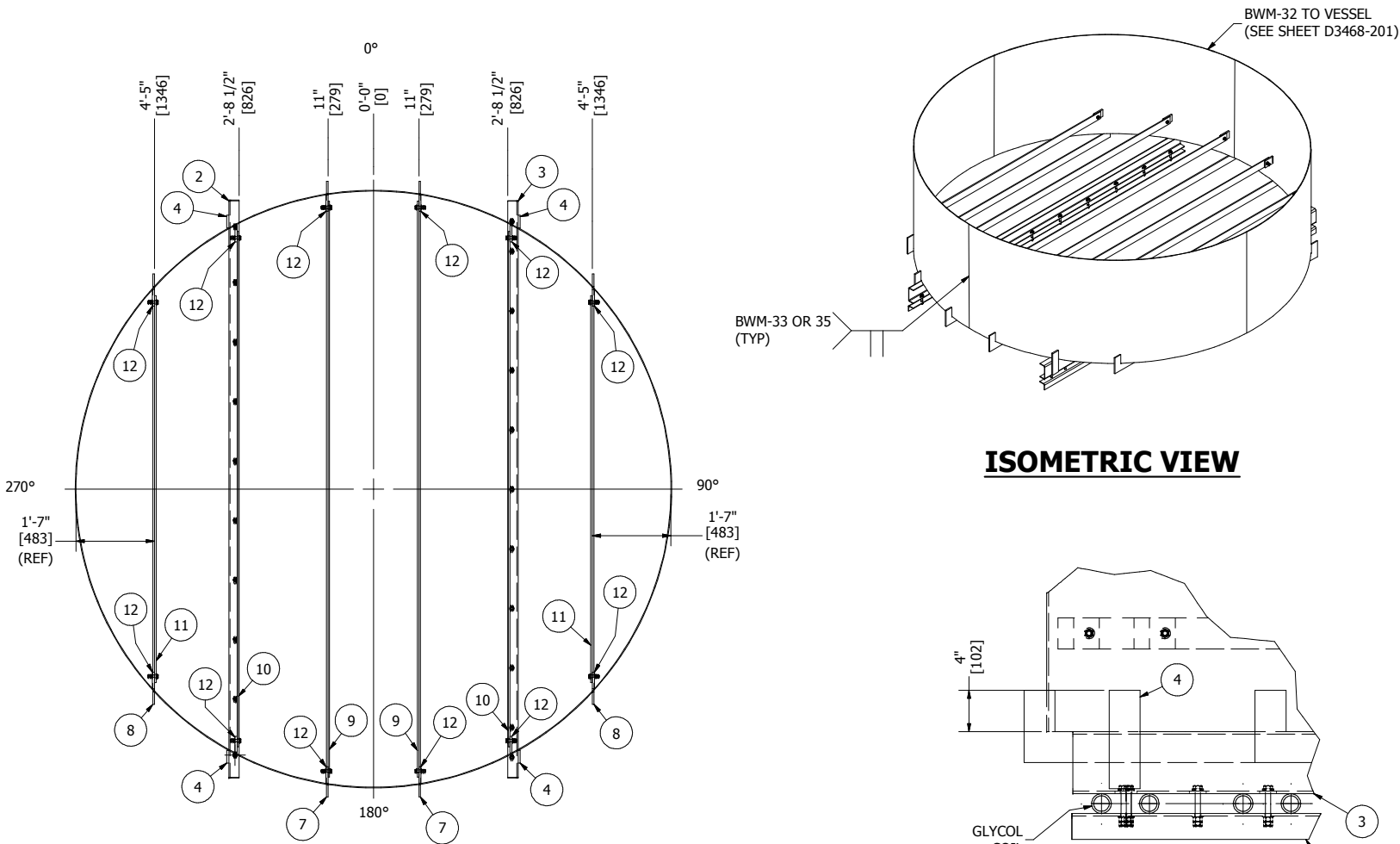
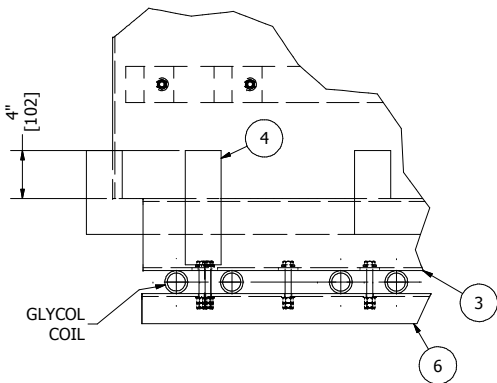


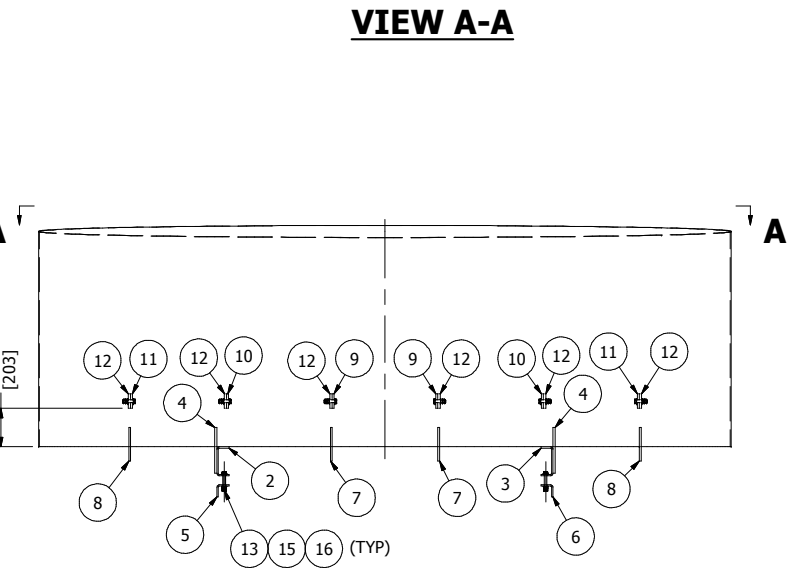
FILE PATH: C:\Workspace\Drafting\Projects\D3400-3499\D3468\D3468.idw



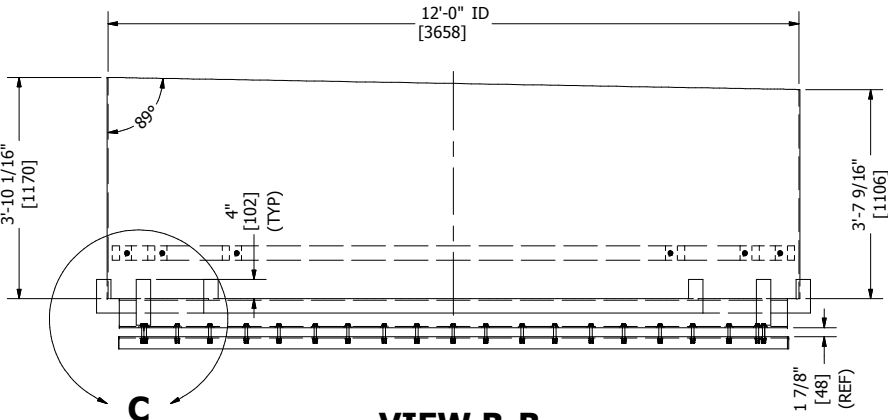
ISOMETRIC VIEW



DETAIL C

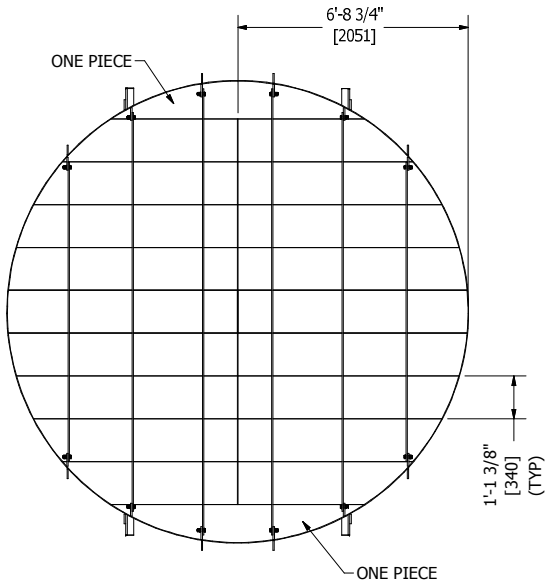


FRONT VIEW



VIEW B-B

BILL OF MATERIALS									
ITEM	QTY	REF.	PART No.	DESCRIPTION	LENGTH	MATERIAL	WEIGHT (lbs)		
1	2	MISTEX	2-011135/98	MISTEX RING 3/16" THK x 144" ID x 46-1/16" H (REQUIRES 2 HALVES)		SA-240-316/L	1103.90		
2	1	COIL	2-010891	COIL SUPPORT 1/4" THK x 6" W x 139 1/4" LG (FORMED)		SA-240-316/L	102.13		
3	1	COIL	2-011128	COIL SUPPORT 1/4" THK x 6" W x 139 1/4" LG (FORMED)		SA-240-316/L	102.06		
4	4	COIL	2-010892	SUPPORT CLIP 1/2" THK x 3" W x 9 1/2" LG		SA-240-316/L	16.54		
5	1	COIL	2-011134	COIL TIE DOWN 1/4" THK x 2 1/2" W x 139 5/8" LG (FORMED)		SA-240-316/L	46.25		
6	1	COIL	2-011129	COIL TIE DOWN 1/4" THK x 2 1/2" W x 139 3/8" LG (FORMED)		SA-240-316/L	46.14		
7	2	MISTEX	2-011130	MISTEX BAR 3/8" THK x 7" W x 148 3/4" LG		SA-276-316/L	102.32		
8	2	MISTEX	2-011131	MISTEX BAR 3/8" THK x 7" W x 104" LG		SA-276-316/L	73.11		
9	2	MISTEX	2-010889	MISTEX BAR 3/8" THK x 3" W x 139 1/8" LG C/W SLOTS		SA-240-316/L	90.59		
10	2	MISTEX	2-010890	MISTEX BAR 3/8" THK x 3" W x 124 7/16" LG C/W SLOTS		SA-240-316/L	81.01		
11	2	MISTEX	2-011132	MISTEX BAR 3/8" THK x 3" W x 93 3/8" LG C/W SLOTS		SA-240-316/L	60.71		
12	12	MISTEX	2-011133	MISTEX CLIP 1/2" THK x 3" W x 4" LG		SA-240-316/L	20.35		
13	23	COIL	1-020038	1/2-13 UNC x 3 1/2" LG HEX BOLT		18.8SS	5.57		
14	12	MISTEX	1-000181	1/2-13 UNC x 2 1/4" LG HEX BOLT		18.8SS	2.05		
15	70	MISTEX/COIL	1-003727	1/2" SAE FLAT WASHER		18.8SS	1.28		
16	70	MISTEX/COIL	1-001929	1/2-13 UNC HEX NUT		18.8SS	3.07		
							1857.08		



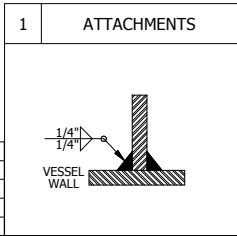
TOP VIEW WITH MISTEX PAD

NOTES:  
1. SEE SHEET 204 FOR DETAILS ON PARTS



FEBRUARY 13, 2017

REGISTERED WELDING PROCEDURE NUMBER				
WELD DETAIL	ROOT	HOT PASS	FILL AND CAP	GOUGE/BACKWELD
1 (SS)	BWM- 33	BWM- 33	BWM- 33	N/A
1 (SS)	BWM-35	BWM-35	BWM-35	N/A
1(SS-CS)	-	-	BWM-32	N/A



REV	DATE	DESCRIPTION	BY	ENG	PM	APP
A	6/6/2016	ISSUED FOR APPROVAL	AD	JAM	JDW	
0	7/4/2016	ISSUED FOR FABRICATION	AD	JAM	JDW	
1	8/12/2016	COIL SUPPORTS ADJUSTED	AMC	JAM	JDW	
2	9/8/2016	REDESIGN OF COIL SUPPORT, MISTEX PAD TO BE INSTALLED FROM TOP, INSTEAD OF UNDERNEATH	AD	JAM	JDW	
3	02/10/2017	AS-BUILT: INCLUDED 2-011198 WITH ITEM #1 (2-011135)	NHH	JAM	JDW	

**BILTON**  
Welding and Manufacturing Ltd.  
This drawing is property of BILTON WELDING AND MANUFACTURING LTD and is lent to the recipient for their confidential use only. In consideration of the loan of this drawing, the recipient promises and agrees that it shall not be used in any way detrimental to the interests of BILTON WELDING AND MANUFACTURING LTD, that it shall be returned upon request, and shall not be reproduced, copied, lent, or otherwise disposed of, directly or indirectly, without the written consent of BILTON WELDING AND MANUFACTURING LTD.

BOX 6106  
5815 37 Street  
INNISFAIR, AB  
CANADA  
403-227-7799  
1-888-227-4923  
FAX 227-7796

WESTCOAST ENERGY INC.		
174" OD x 16'-6" [4420mm x 5029mm] SULPHUR TAIL GAS COALESCER- TAG#: PV 17.43A MISTEX PAD ASSEMBLY DETAIL		
QUOTE NUMBER: 07961	SALE ORDER: 004470	
PURCHASE ORDER: 2850038875	JOB ORDER:	SIZE
LOCATION: CHETWYND, BC	<b>D3468</b>	<b>D</b>
DATE: 03/15/2016	DRAWING NO.:	
SHEET: 4 OF 8	<b>D3468-203</b>	
CRN DWG: N/A	REV.	3
CRN NUMBER: N/A		