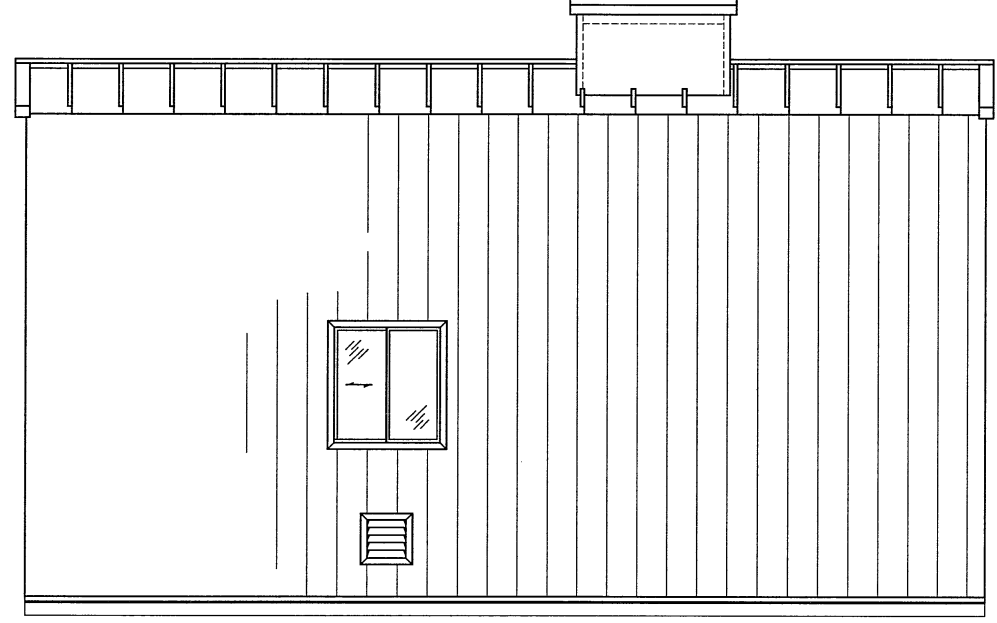
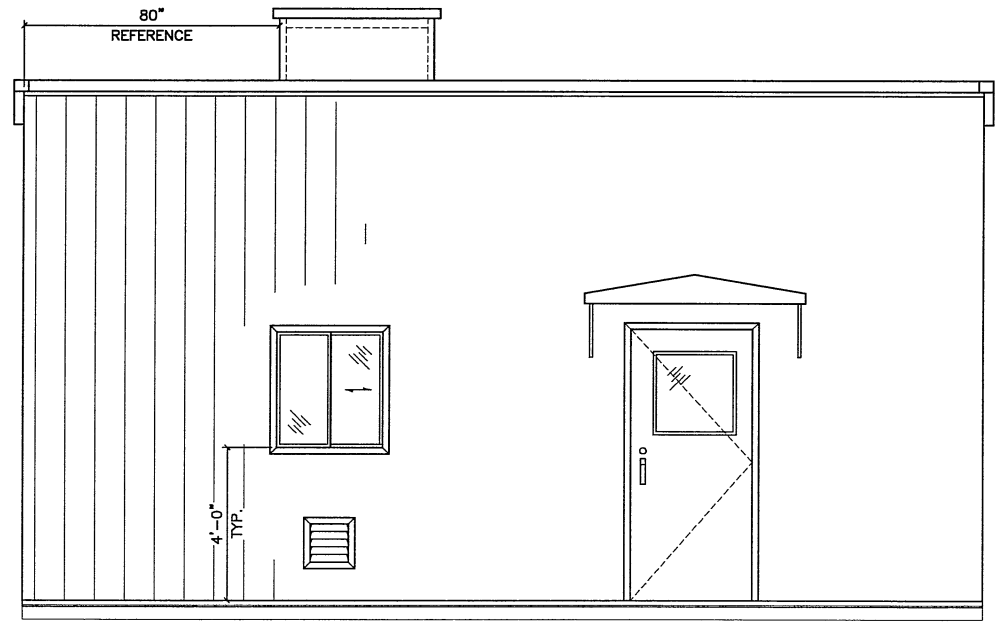


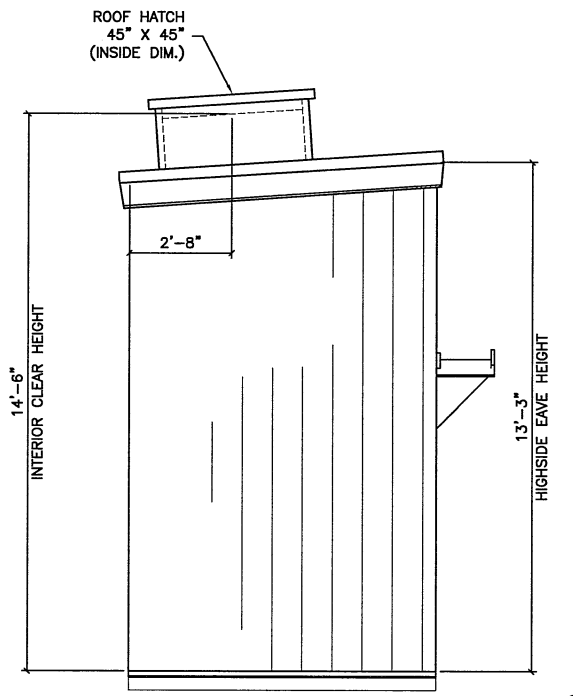
FLOOR PLAN VIEW



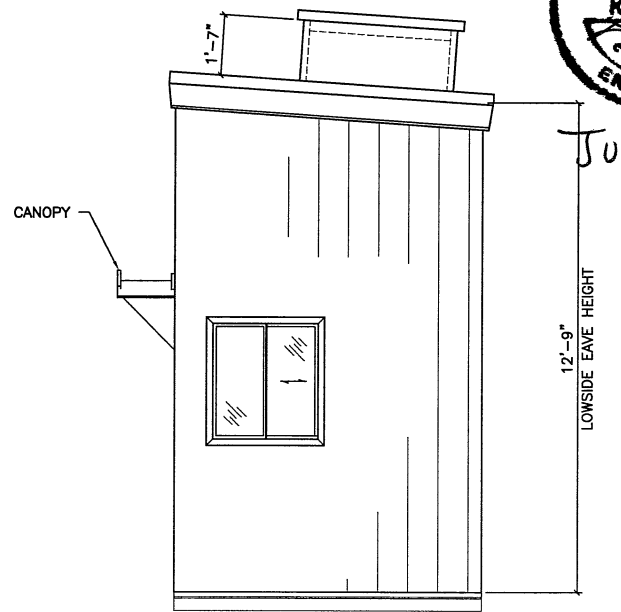
NORTH ELEVATION



SOUTH ELEVATION



WEST ELEVATION



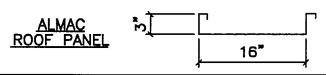
EAST ELEVATION



JUN 11/13

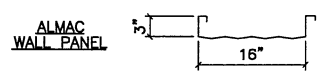
ROOF CONSTRUCTION:

- 22 GA. PREPAINTED STEEL INTERLOCKING STRUCTURAL RIB ROOF PANELS. ROOF PANELS ARE TO BE FINISHED: TAN (QC-8315).
- 22GA. STEEL INSULATION RIBS AT ROOF PANEL JOINTS.
- R12 (3") FIBREGLASS BATT INSULATION.
- 6 MIL POLY VAPOUR BARRIER.
- 24ga. PREPAINTED ALUMINUM FLUTED PROFILE LINER PANELS, TO COLOUR: WHITE



WALL CONSTRUCTION:

- 22 GA. PREPAINTED STEEL INTERLOCKING STRUCTURAL RIB WALL PANELS. WALL PANELS ARE TO BE FINISHED: TAN (QC-8315).
- R12 (3") FIBREGLASS BATT INSULATION.
- 6 MIL POLY VAPOUR BARRIER.
- 24ga. PREPAINTED ALUMINUM FLUTED PROFILE LINER PANELS, TO COLOUR: WHITE



TRIM COLOURS:

- GABLE FLASHING AND ALL NOTED FLASHINGS ARE TO BE FORMED FROM PREPAINTED STEEL MATERIAL. FINISH: METRO BROWN (QC-8228)

ACCESSORIES:

- (A) ONE ONLY 3'-0" x 7'-0" STEEL INSULATED EXTERIOR MAN DOOR C/W HARDWARE AS FOLLOWS:
 - *DOOR LEAF-20 GA. STEEL 45mm THK HONEYCOMB CORE (R4)
 - *DOOR FRAME-16 GA. PRESSED STEEL
 - *BUTT HINGES-"STANLEY" #BB1409 x 114x102 x 26D
 - *PANIC HARDWARE-"VDN DUPRIN" #44TP
 - *LOCK CYLINDER-"DOREX" #501 RIM KA x C26D
 - *WIRE GLASS-"24" x 24" SINGLE GLAZED (I.W.G.)
 - *CHECKCHAIN-"CANAROPA" #354B
 - *THRESHOLD-"PEMKO" #1700A (ALUMINUM)
 - *WEATHERSTRIP-"PEMKO" #306AV (ALUM./VINYL)
 - *SWEEP-"PEMKO" #315CN (ALUM./NEOPRENE)
 - *SHEET METAL CANOPY, FINISH: METRO BROWN (QC-8228)

DOOR LEAF FINISH: METRO BROWN (QC-8228)
DOOR FRAME FINISH: METRO BROWN (QC-8228)

- (B) THREE ONLY 32" WIDE x 36" HIGH (NOM. SIZE), DOUBLE GLAZED ALUMINUM SLIDING WINDOW C/W LOCK, FIBERGLASS CLOTH HALF SCREEN AND PLAIN GLASS. FRAME FINISH: TAN (QC-8315)

- (C) ONE ONLY 45" X 45" (CLEAR INSIDE DIM.) ROOF HATCH C/W INSULATED CURB AND REMOVABLE COVER

HVAC EQUIPMENT

- (D) TWO ONLY 1'-0" WIDE x 1'-0" HIGH, ADJUSTABLE ALUMINUM LOUVER C/W EXTRUDED ALUMINUM BLADES AND BIRDSCREEN.

GENERAL NOTES:

- ALL EXTERIOR SCREWS ARE TO BE CADMIUM PLATED.
- BUILDING PACKAGE INCLUDES BASE FLASHING (TO MATCH WALL COLOR).

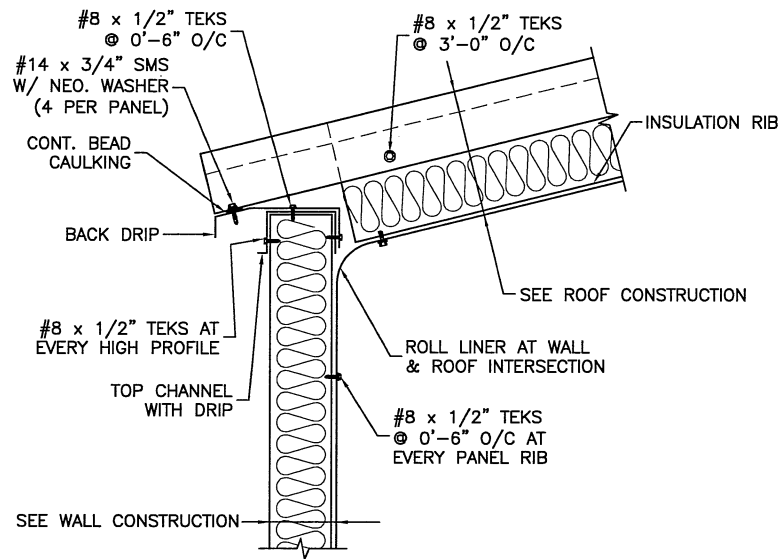
BUILDING MATERIAL SPECIFICATIONS	
PREPAINTED STEEL c/w GALVANIZED SUBSTRATE - A653, G90, Gr 37	c/w GALVALUME SUBSTRATE - A792, AZ150, Gr 37
PLAIN GALVANIZED STEEL - A653, G90, Gr 37	PLAIN GALVALUME STEEL - A792, AZ150, Gr 37
BUILDING DESIGN LOADS (kPa) - FORT ST. JOHN LOADS (BCBC 2012)	
GROUND SNOW LOAD - S _s = 2.8, S _r = 0.10	
WIND LOAD q _{1/10} = 0.30 q _{1/50} = 0.39	
SEISMIC ZONE - S _a (0.2) = 0.096, S _a (0.5) = 0.061, S _a (1.0) = 0.032	S _a (2.0) = 0.019, PGA = 0.054
IMPORTANCE FACTOR = 1.00 U.N.O.	

REV.	DESCRIPTION	BY	DATE
△	ISSUED AS-BUILT	TR	2013/06/11
△	ISSUED FOR CONSTRUCTION	DJK	2011/11/25
△	REVISED AS PER MARK UPS - RE ISSUED FOR APPROVAL	DJK	2011/11/21
△	ISSUED FOR APPROVAL	DJK	2011/11/16

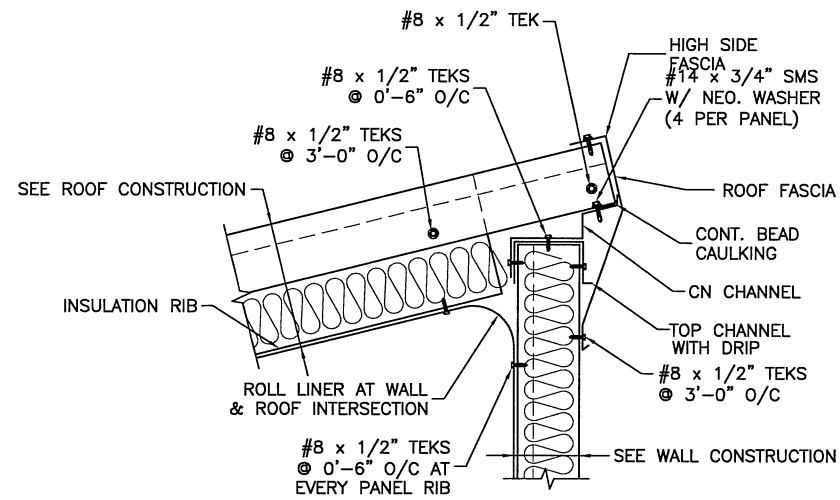
METAL BUILDINGS ALMAC METAL BUILDINGS

Almac Metal Industries Ltd.
 6140-76th AVENUE EDMONTON, ALBERTA T6B 0A6
 PHONE: (780) 465-0861 FAX: (780) 465-4198

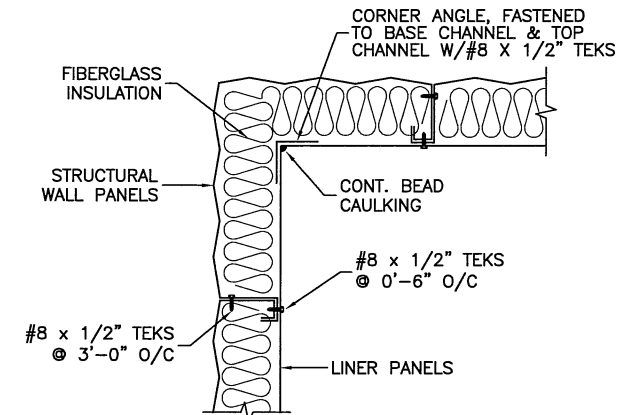
CLIENT: BRASS APPLE ENTERPRISES	DRAWN BY: DJK	CHECKED BY:
TITLE: ENCANA NATURAL GAS c/o ACE INST. INLET SEPERATOR UNIT BUILDING	SCALE: 3/16"=1'-0"	DATE: 2011/11/16
LOCATION: FORT ST. JOHN, BC	JOB NUMBER: 12439	SHEET: 12439-1
SHEET DESCRIPTION: PLAN AND ELEVATION VIEWS	12439	REV. 3



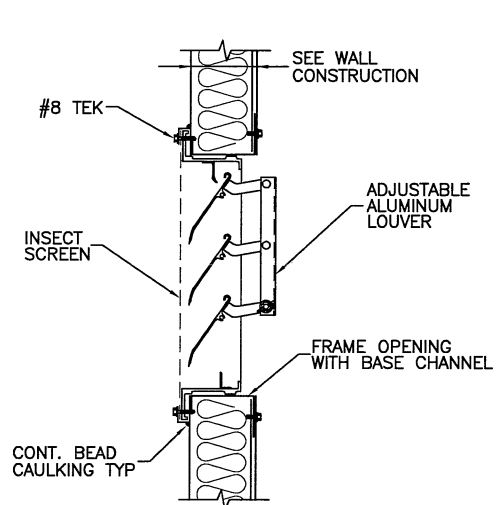
LOWSIDE EAVE DETAIL



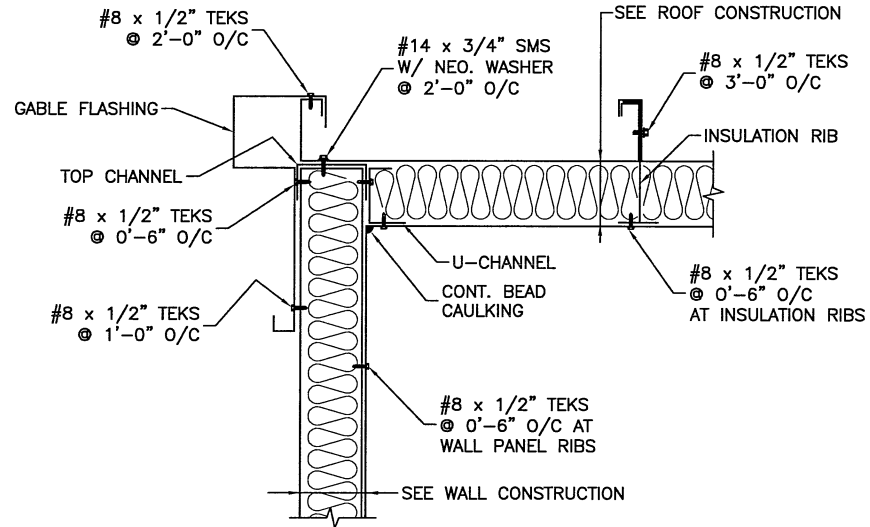
HIGHSIDE EAVE DETAIL



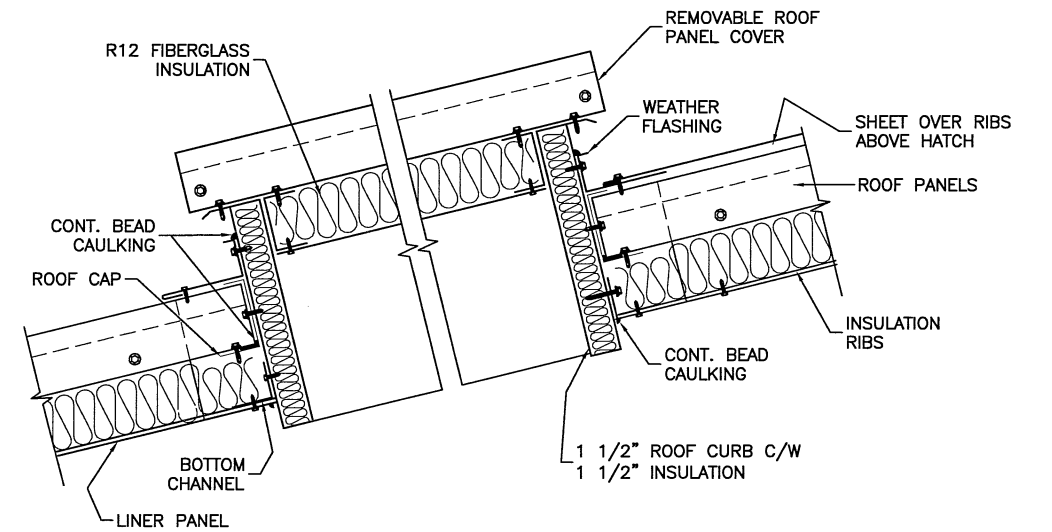
BUILDING CORNER DETAIL



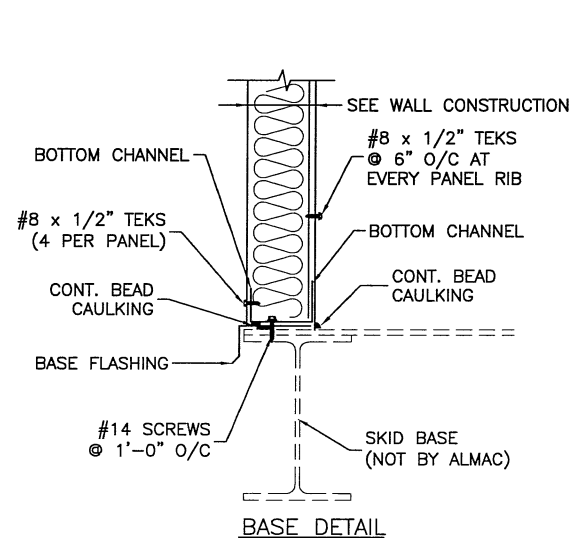
ADJUSTABLE LOUVER DETAIL



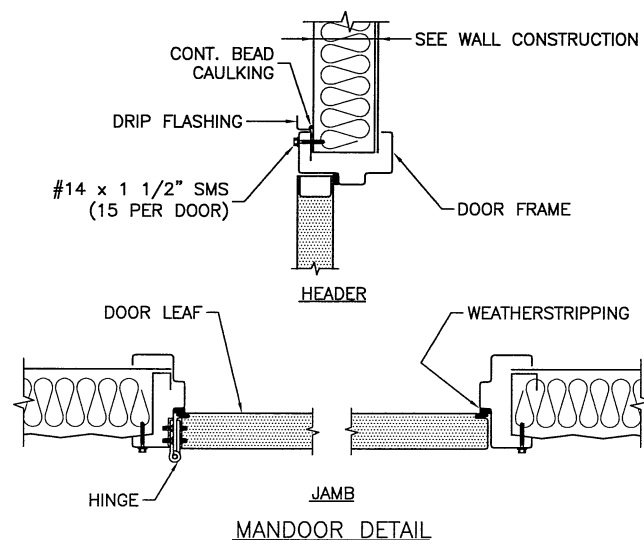
GABLE DETAIL



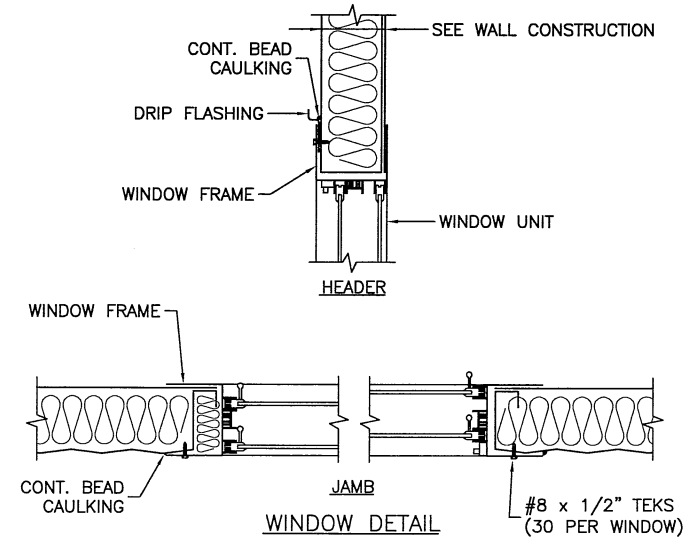
SECTION THROUGH ROOF HATCH



BASE DETAIL



MANDOOR DETAIL



WINDOW DETAIL

PROFESSIONAL ENGINEER
K.P. HO
COLUMBIA
JWH/1/13

ISSUED AS-BUILT	TR	2013/06/11
ISSUED FOR CONSTRUCTION	DJK	2011/11/25
ISSUED FOR APPROVAL	DJK	2011/11/16
REV.	DESCRIPTION	BY DATE



Almac Metal Industries Ltd.

6140-76th AVENUE EDMONTON, ALBERTA T6B 0A6
PHONE: (780) 465-0861 FAX: (780) 465-4198

CLIENT: BRASS APPLE ENTERPRISES	DRAWN BY: DJK	CHECKED BY:
TITLE: ENCANA NATURAL GAS c/o ACE INST. INLET SEPERATOR UNIT BUILDING	SCALE: NTS	
LOCATION: FORT ST. JOHN, B.C.	DATE: 2011/11/16	
SHEET DESCRIPTION: TYPICAL BUILDING DETAILS	JOB NUMBER: 12439	SHEET: 12439-2
		REV. 2