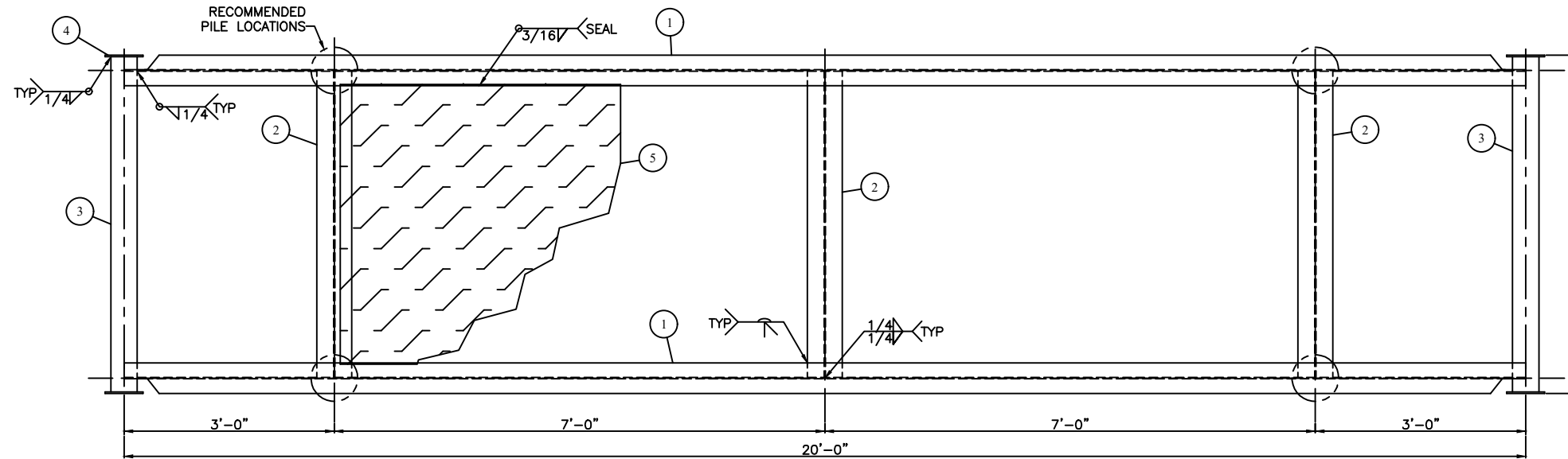


GENERAL NOTES

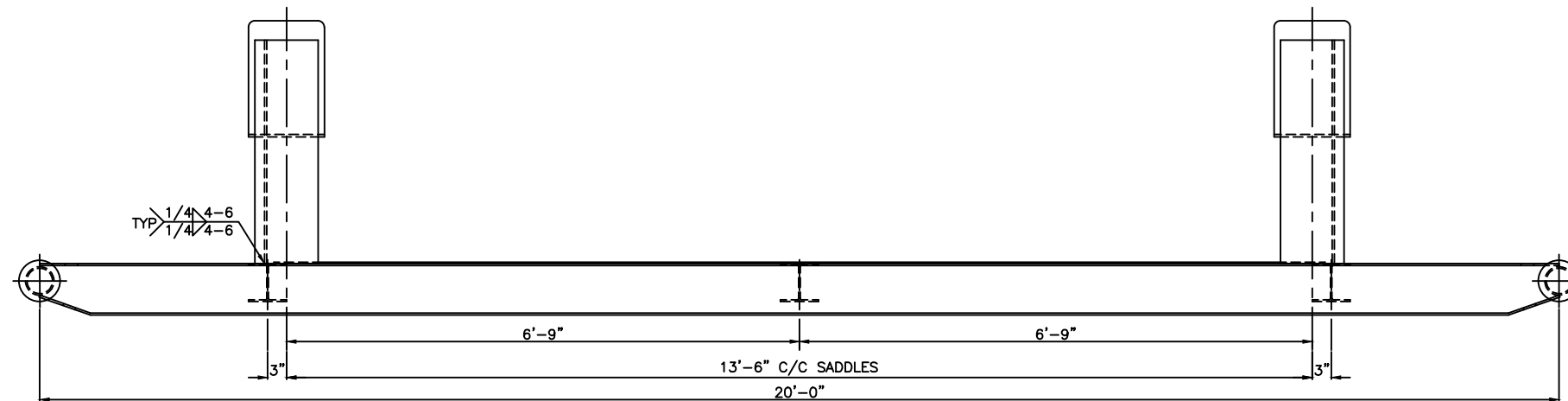
1. WELD PROCEDURE: GM-1
2. SANDBLAST: SSPC-SP6 (COMMERCIAL)
3. PRIME: ONE (1) COAT RUSTEX 71024 PRIMER
4. PAINT: TWO (2) COATS INDUSTRIAL ENAMEL (WARM GREY)
5. INSULATION: 3" THK SPRAY FOAM U/S OF FLOOR
6. APPROXIMATE WEIGHT: 1,550 LBS

BILL OF MATERIALS

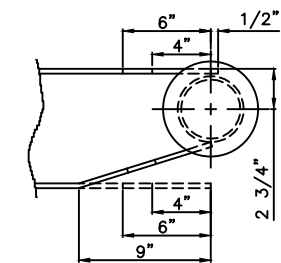
ITEM	REQ'D	PART	DESCRIPTION	MATERIAL	WEIGHT
1	2	RUNNER	W8@18# x 20'-0" LG (ROUGH CUT TO 241")	SA-36	720#
2	3	CROSSMEM	W6@15# x 4'-4 1/2" LG (COPE TO SUIT)	SA-36	197#
3	2	PULL	4" STRUCTURAL PIPE SCH XH x 4'-9 1/2" LG	SA-53	145#
4	4	PULLCAP	1/4" THK x 6 1/2" OD (TEMPLATE #12)	SA-36	5#
5	1	FLOOR	3/16" THK CHECKERPLATE x 4'-0" W x 13'-10" LG	SA-36	445#



PLAN VIEW



ELEVATION VIEW



COPE DETAIL

FILE PATH: \MAINDATA\CAD\TANKS\C600-C699\C648-2

REV. NO.	DATE	REVISION	BY	APP'D
A	10/02/08	ISSUED FOR APPROVAL	DSG	
0	11/16/09	ISSUED FOR FABRICATION	DSG	JAM
1	12/23/09	AS BUILT	DSG	JAM

BILTON
 BOX 6106
 5815 37 Street
 INNISFAIL, AB
 CANADA
 403-227-7799
 1-888-227-4923
 FAX 227-7796
Welding & Manufacturing Ltd.

This drawing is property of BILTON WELDING & MANUFACTURING LTD and is loaned to the recipient for their confidential use only. In consideration of the loan of this drawing the recipient promises and agrees that it shall not be used in any way detrimental to the interests of BILTON WELDING & MANUFACTURING LTD. that it shall be returned upon request, and shall not be reproduced, copied, loan, or otherwise disposed of, directly or indirectly, without the written consent of BILTON WELDING & MANUFACTURING LTD.

BP CANADA ENERGY		
SOUR GAS WELLSITE FLARE KNOCKOUT DRUM - TAG: V-3110 SKID DETAILS		
DATE: 10/02/08	SALE ORDER: 001083	
SHEET: 2 OF 2	JOB ORDER:	SIZE
DRAWN BY: DSG	D0738	D
PURCHASE ORDER: 30940-3051.003	DRAWING NO.:	
LOCATION: NOEL MAJOR PROJECT	C648-2	
APP'D BY: JAM	REV. 1	