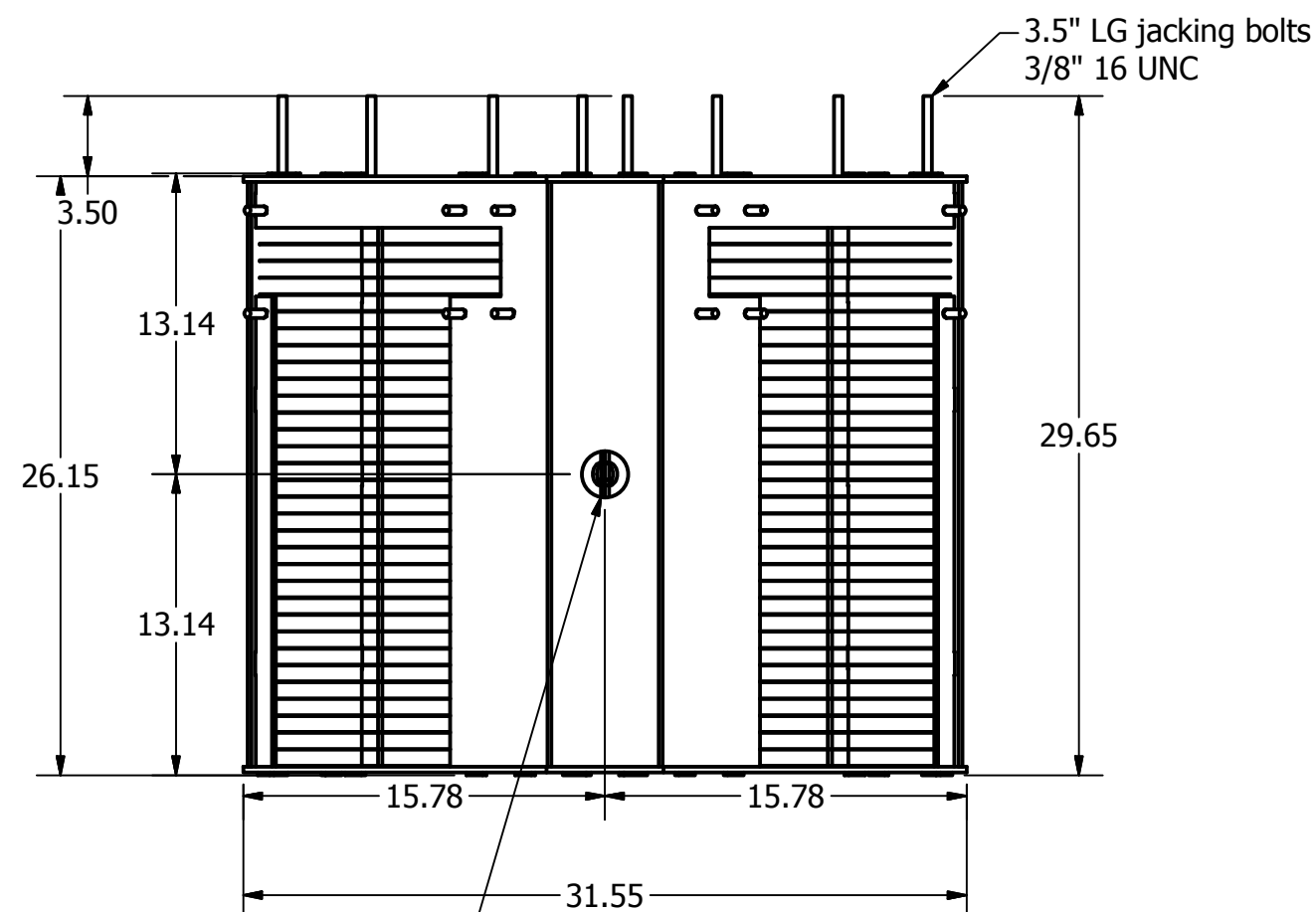
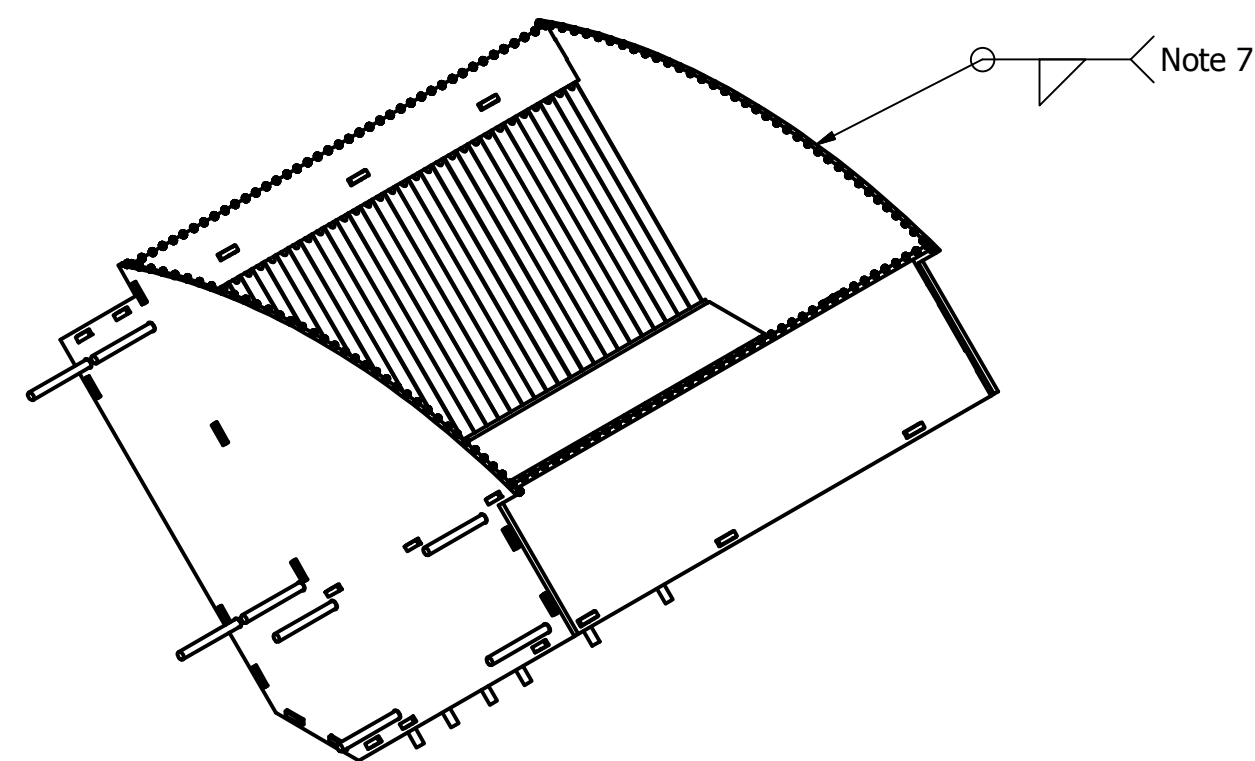


Openings for removal/insertion of removable vanes, to be sealed with supplied gates

1" studs for securing gate seals  
3/8" 16UNC



2" DownComer Hole



Note 7

AS BUILT

This Drawing is the property of Petromesh Inc. and is not to be reproduced or used in any way without the prior written consent of Petromesh Inc. [www.petromesh.com](http://www.petromesh.com)

Sold by Industrial Process Products Ltd.  
10580 48 St SE Calgary, Alberta T2C 2B8  
403 301-0111

#### NOTES:

- 1) All dimensions are inches.
- 2) All housing material is 1/4" TH 316L SS
- 3) All vane material to be 316L SS.
- 4) Approx. weight 316 lbs
- 5) For Installation into a 72" ID FWKO
- 6) Vanes Removable
- 7) Welds to shell be fabricator

5B1088-08-DR-20-007 Rev 0

DRAWN GarySmyth	19/02/2013
CHECKED	
QA	
MFG	
APPROVED	

TITLE  
Petromesh Enhanced Double Pocket Vane  
3V-32-15-72ID - 2-VEE Bank  
5Blue PO: P5957-5B1087-20 & P5958-5B1088-20 Item 1  
FWKO  
Removable Vanes - 316L SS Constrution

SIZE C	DWG NO 3V-32-15-72ID	REV 0
SCALE	SHEET 1 OF 1	