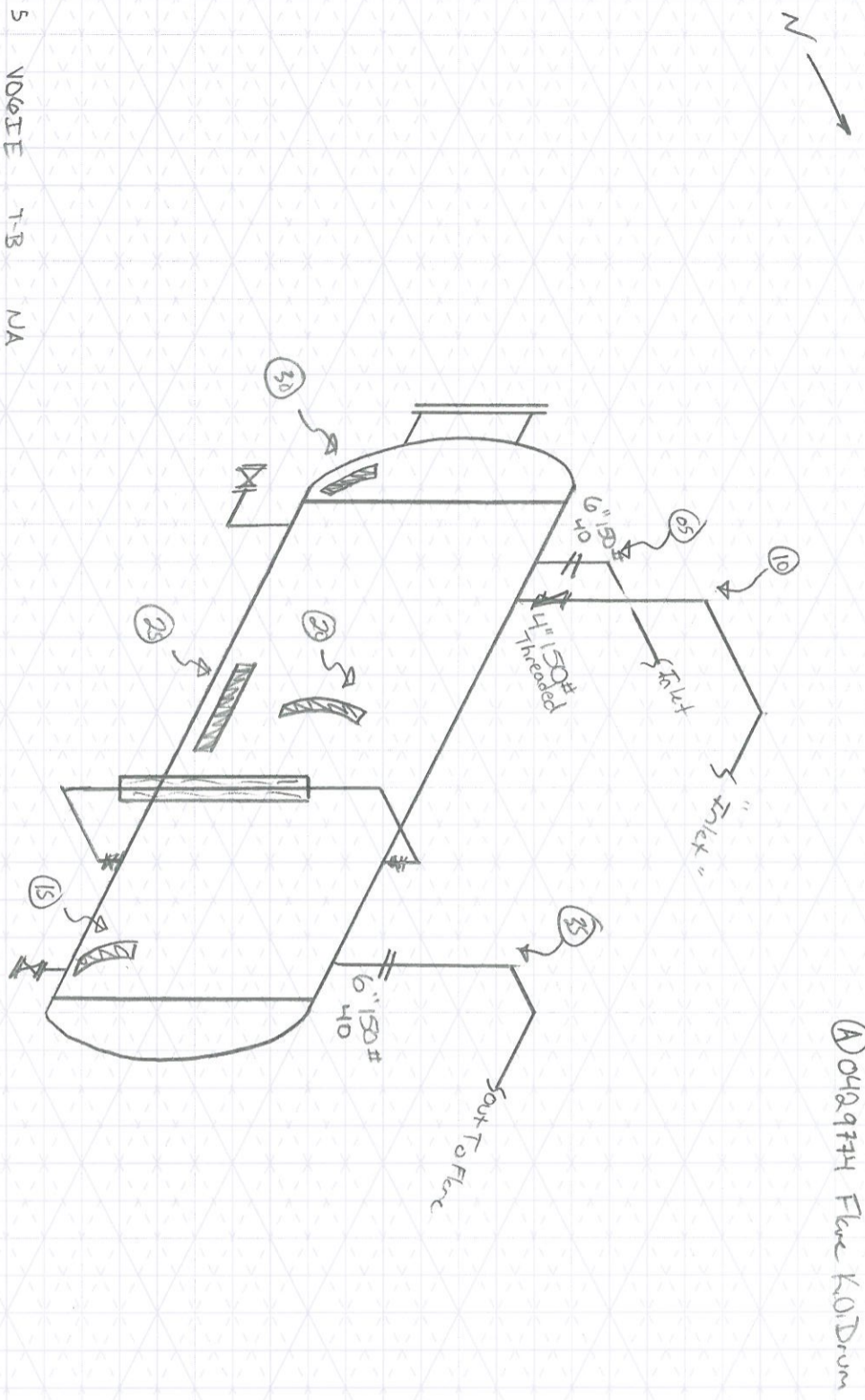


5	NO&IE	T-B	NA
10	VO IE	T-B	NA
15	VBESS	T-B	
20	HMB	E-W	
25	VHSS	T-B	
30	VMBH	T-B	
35	V060E	BT	NA



A 0429774 Flue KODrum

CUSTOMER: CNRL FACILITY: Brintnell LSD: 13-22-081-22 W4M
 P & ID: - DRAWN BY: MD DATE: 6.25.10 DRAWING NO. MD-40

VESSEL INFORMATION:

Equip. No. _____ Pro.Reg.No (A) 0429774 C.R.N. NG4152 Serial No 1960 KI V1001 Yr. Inst. -
 Code/Div. UW Size: 60" ID @ X 144" L Manufacturer: Plains oil Ltd. Yr. Blt. 1997
 C. Stamp yes Service: sweet PWHT: - J.E.: - Radiography: RT-3 Insulated: yes

HEAD: Top Mat'l SA-516-70N Top Nom 8.76mm Top C.A. - **SHELL:** Material SA-516-70N Nominal 9.5mm C.A. -
 Btm Mat'l " Btm Nom. " Btm C.A. -

BOOT: Head Mat'l - Head Nom - Head C.A. - **CHANNEL:** Top Mat'l - Top Nom. - Top C.A. -
 Shell Mat'l - Shell Nom. - Shell C.A. - Btm Mat'l - Btm Nom. - Btm C.A. -
 MAWP Shell side: 345 KPA @ Temp. 38°C MAWP Tube Side: - @ Temp. -

PIPING INFORMATION:

Circuit. No. _____ Line No. (s) **(PLEASE PUT LINE NUMBERS ON APPLICABLE LINES ON THE DRAWING)**
 Piping Class _____ Service: _____ Yr. Blt. _____
 MAWP: _____ @ Temp. _____ Size & Schedule of Piping **(PLEASE PUT APPROPRIATE SIZES AND SCHEDULES OF PIPING ON DRAWING)**

A0429774 UT Readings
Readings in Inches

	PNT 1	PNT 2	PNT 3
LOC 5	Obstr M	Obstr M	Obstr M
LOC 10	Obstr M	Obstr M	Obstr M
LOC 15	0.393	0.402	0.395
LOC 20	0.415	0.430	0.425
LOC 25	0.420	0.428	0.425
LOC 30	0.392	0.402	0.394
LOC 35	Obstr M	Obstr M	Obstr M