

V-1050
FLARE KNOCK OUT DRUM
SIZE: 72" ID x 20'-0" S/S
DESIGN: 50 PSIG @ 200/-40°F
C.A.: 3/16"

P-1060/1061
TRANSFER PUMPS
TEXTTEAM MODEL 6121
MAX. DISCHARGE PRESSURE: 1800 PSIG
MAX. DISCHARGE FLOW: 3.0 USGPM

BH-1065
BUILDING HEATER
CATADYNE MODEL Bx24x48
DUTY: 48,000 BTU/HR

V-1051
FUEL GAS SCRUBBER
SIZE: 6 5/8" OD x 3'-0" S/S
DESIGN: 250 PSIG @ 200/-20°F MDMT
C.A.: 1/16"

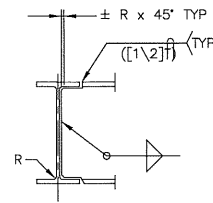
NO.	REVISION	BY	CHKD.	DATE
7	AS BUILT	MC		99/11/22
6	REVISED AS SHOWN	CM		99/11/12
5	ADD SB-201SL, PRV-1060, PRV-1061	GRS		99/10/18
4	REVISED AS SHOWN	CM		99/10/15
3	REVISED AS SHOWN	CM		99/10/13
2	ADDED VENT LINE BACK TO BRIDLE	GRS		99/10/01
1	REVISED AS SHOWN	KB		99/09/22
0	ISSUED FOR CONSTRUCTION	CM		99/08/30
B	RE-ISSUED FOR APPROVAL	KB		99/08/20

CUSTOMER REFERENCE: F-2186

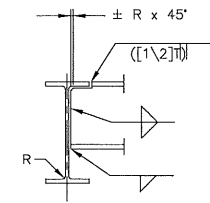


PRESSON
MANUFACTURING LTD.
ENGINEERING — DESIGN — FABRICATION

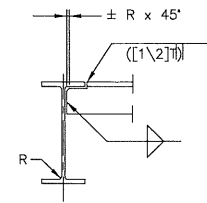
CUSTOMER:	ULSTER PETROLEUMS LTD.	JOB NO.	B6423-00
PROJECT:	LELAND LSD 07-02-59-26 W5M		
TITLE:	WELLSITE FLARE KNOCKOUT PACKAGE P. & I.D.		
DRAWN	GRS	CHECKED	APPROVED
SCALE	N.T.S.	DATE	99/08/09
DRAWING NUMBER	B6423-001		



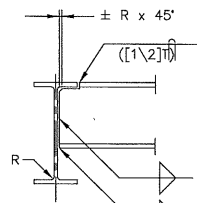
COPING DETAIL
MAIN MEMBERS



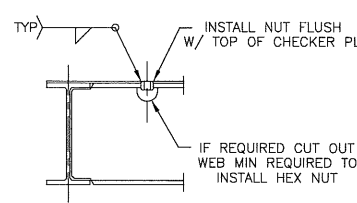
COPING DETAIL
BEAM TO BEAM



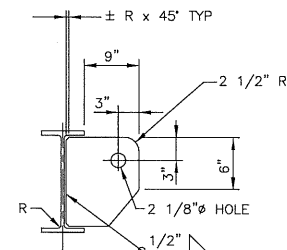
COPING DETAIL
ANGLE TO BEAM



COPING DETAIL
CHANNEL TO BEAM



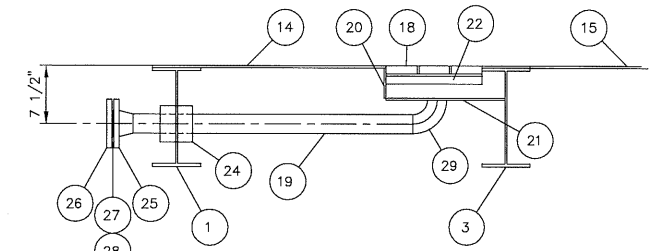
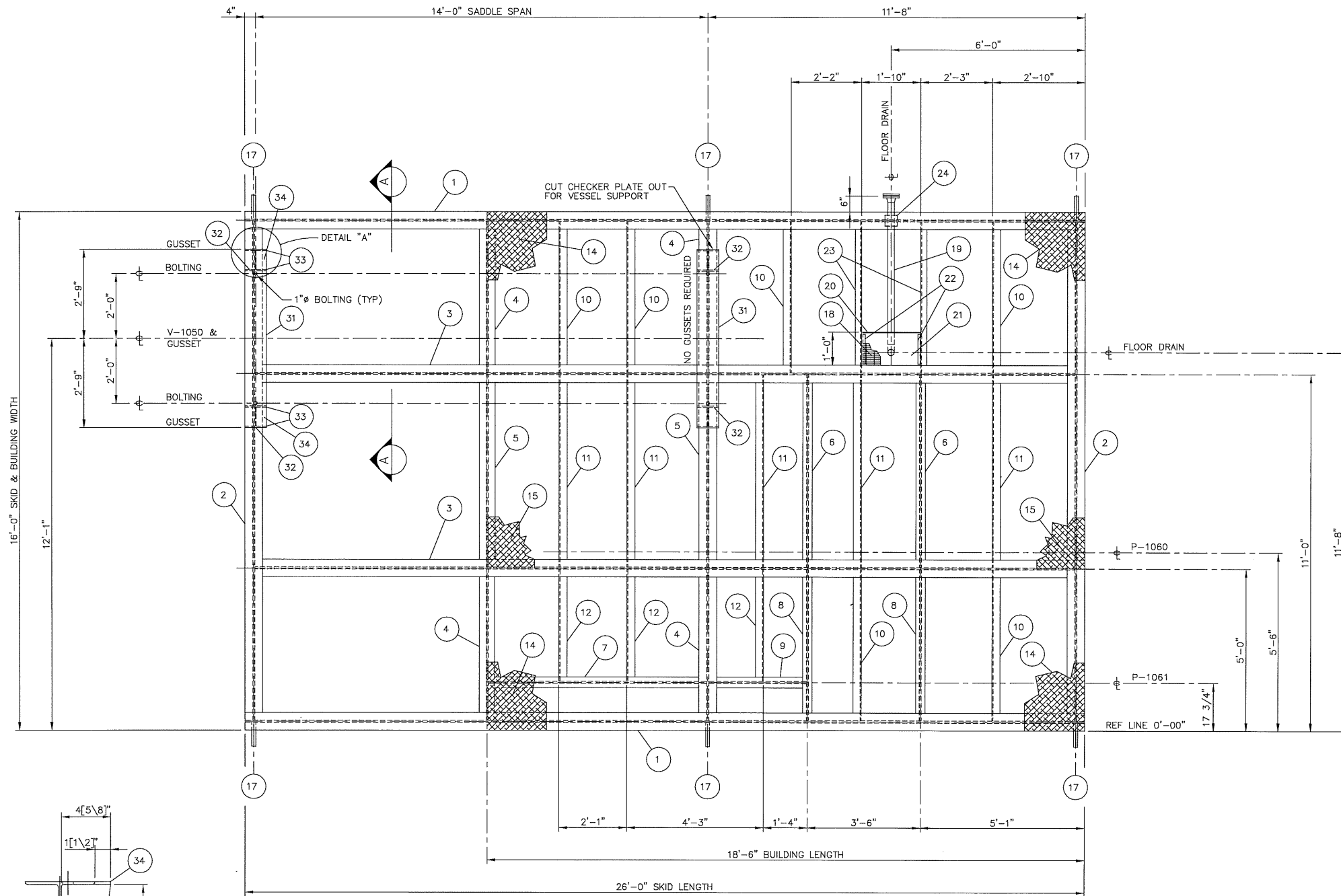
BOLTING DETAIL



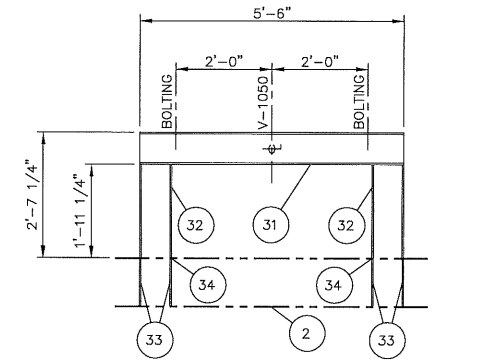
LIFTING LUG DETAIL
FOR LUG ON SIDE OF SKID

BILL OF MATERIALS

MARK	PART	DESCRIPTION	QTY.	MATERIAL
1	MAIN SUPPORT	W12 x 26# x 26'-0" LG	2	SAG40.21.44W
2	MAIN SUPPORT	W12 x 26# x 15'-5 1/4" LG	2	SAG40.21.44W
3	MAIN SUPPORT	W12 x 26# x 25'-5 1/4" LG	2	SAG40.21.44W
4	MAIN SUPPORT	W12 x 26# x 4'-8 1/2" LG	4	SAG40.21.44W
5	MAIN SUPPORT	W12 x 26# x 5'-11 3/4" LG	2	SAG40.21.44W
6	MAIN SUPPORT	W4 x 13# x 5'-11 3/4" LG	2	SAG40.21.44W
7	MAIN SUPPORT	W4 x 13# x 6'-9 3/4" LG	1	SAG40.21.44W
8	MAIN SUPPORT	W4 x 13# x 4'-8 1/2" LG	2	SAG40.21.44W
9	MAIN SUPPORT	W4 x 13# x 3'-0 3/4" LG	1	SAG40.21.44W
10	SUPPORT	3" x 3" x 3/8" ANGLE x 4'-8 1/2" LG	6	SAG40.21.44W
11	SUPPORT	3" x 3" x 3/8" ANGLE x 5'-11 3/4" LG	5	SAG40.21.44W
12	SUPPORT	3" x 3" x 3/8" ANGLE x 3'-2 3/4" LG	3	SAG40.21.44W
14	FLOOR	5'-0" x 1/4" THK CHECKER PL x 18'-6" LG	2	SAG40.21.44W
15	FLOOR	6'-0" x 1/4" THK CHECKER PL x 18'-6" LG	1	SAG40.21.44W
17	LIFT LUGS	11 3/8" x 1" PL x 1'-0" LG c/w 2 1/8" HOLE	6	SAG40.21.44W
18	DRAIN	11 3/4" x 1" THK DB GRATING x 1'-9 3/4" LG	1	SAG40.21.44W
19	DRAIN	2" SCH 40 SMLS PIPE x 4'-2 1/2" LG	1	SA-106B
20	DRAIN SUPPORT	4" x 1/4" PL x 1'-9 1/2" LG	1	SAG40.21.44W
21	DRAIN SUPPORT	1'-3" x 1/4" PL x 1'-9 1/2" LG	1	SAG40.21.44W
22	DRAIN SUPPORT	1" x 1" x 1/4" ANGLE x 11" LG	2	SAG40.21.44W
23	DRAIN SUPPORT	C4 @ 5.4# x 4'-8 1/2" LG	2	SAG40.21.44W
24	DRAIN SUPPORT	4" SCH 40 SMLS PIPE x 4" LG	1	SA-106B
25	DRAIN FLANGE	2" 150# SCH STD RFWN FLG	1	SA-105N
26	BLIND FLANGE	2" 150# RF BLIND FLG	1	SA-105N
27	DRAIN GASKET	2" 150# RF x 1/8" THK FLEX GASKET	1	SA-105N
28	DRAIN STUDS	5/8" x 3 1/4" LD STUDS c/w (2) NUTS EA	4	SA-105N
29	DRAIN	2" SCH 40 LRBW 90° ELL	1	SA234WPB
30				
31	VESSEL SUPPORT	W8 x 31# x 5'-6" LG	2	SAG40.21.44W
32	VESSEL SUPPORT	W8 x 31# x 1'-11 1/4" LG	4	SAG40.21.44W
33	GUSSET	4 5/8" x 3/8" PL x 11 3/4" LG	4	SAG40.21.44W
34	SUPPORT	1 1/2" x 3/8" PL x 8" LG	2	SAG40.21.44W



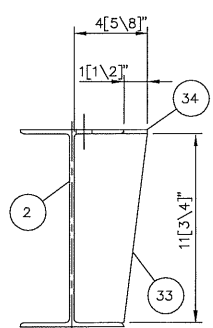
DRAIN DETAIL



SECTION "A-A"

NOTES

- 1) TOP OF CHECKER PLATE REFERENCE ELEVATION 0'-0".
- 2) CHECKER PLATE SEAMS TO BE SEAL WELDED.
- 3) CHECKER PLATE PERIMETER TO BE STITCH WELDED.
- 4) CHECKER PLATE TO BE STITCH WELDED TO ALL SUPPORTS.
- 5) STRUCTURAL SKID TO BE COMMERCIALY SANDBLASTED PER SSPC-SP6, PRIOR TO RECEIVING: (1) COAT ZINC PHOSPHATE PRIMER & (2) COAT WARM GREY ENAMEL.
- 6) UNDERSIDE OF SKID TO RECEIVE 2" THK URETHANE FOAM INSULATION.
- 7) TOTAL APPROXIMATE SKID WEIGHT: 9,500 lbs. (4318 kg).



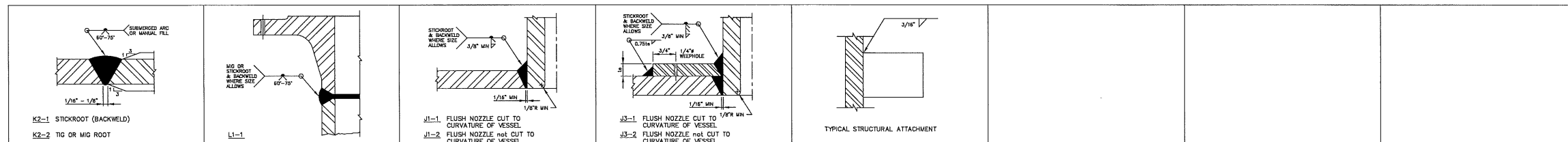
DETAIL "A"

NO.	REVISION	BY	CHKD.	DATE
1	RELOCATED P-1060/1061, ADDED SUPPORTS	GRS		99/10/20
0	ISSUED FOR CONSTRUCTION	CM		99/10/19

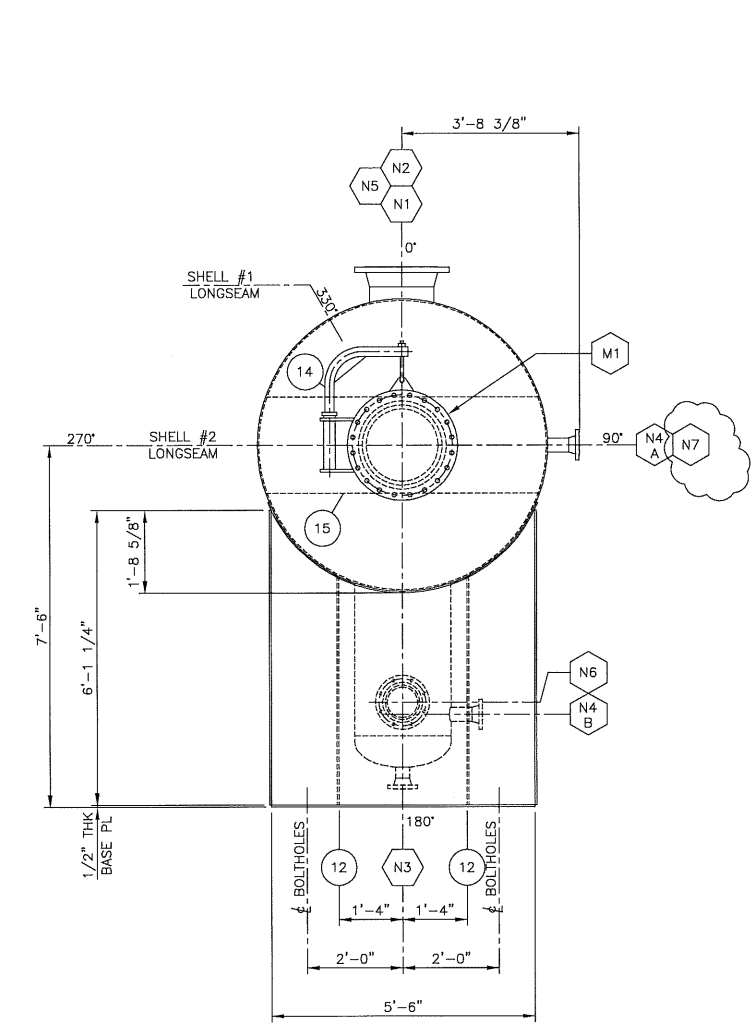
CUSTOMER REFERENCE: F-2186

PRESSON MANUFACTURING LTD.
ENGINEERING — DESIGN — FABRICATION

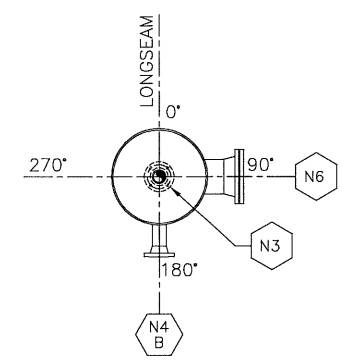
CUSTOMER:	ULSTER PETROLEUMS LTD	JOB NO.:	B6423-10
PROJECT:	LELAND LSD 07-02-59-26 W5M		
TITLE:	SKID DETAIL 16'-0" x 26'-0" LG w/W12 @ 26# MAIN MEMBERS		
DRAWN:	GRS	CHECKED:	APPROVED:
SCALE:	1/2" = 1'-0"	DATE:	99/10/17
DRAWING NUMBER:	B6423-100		



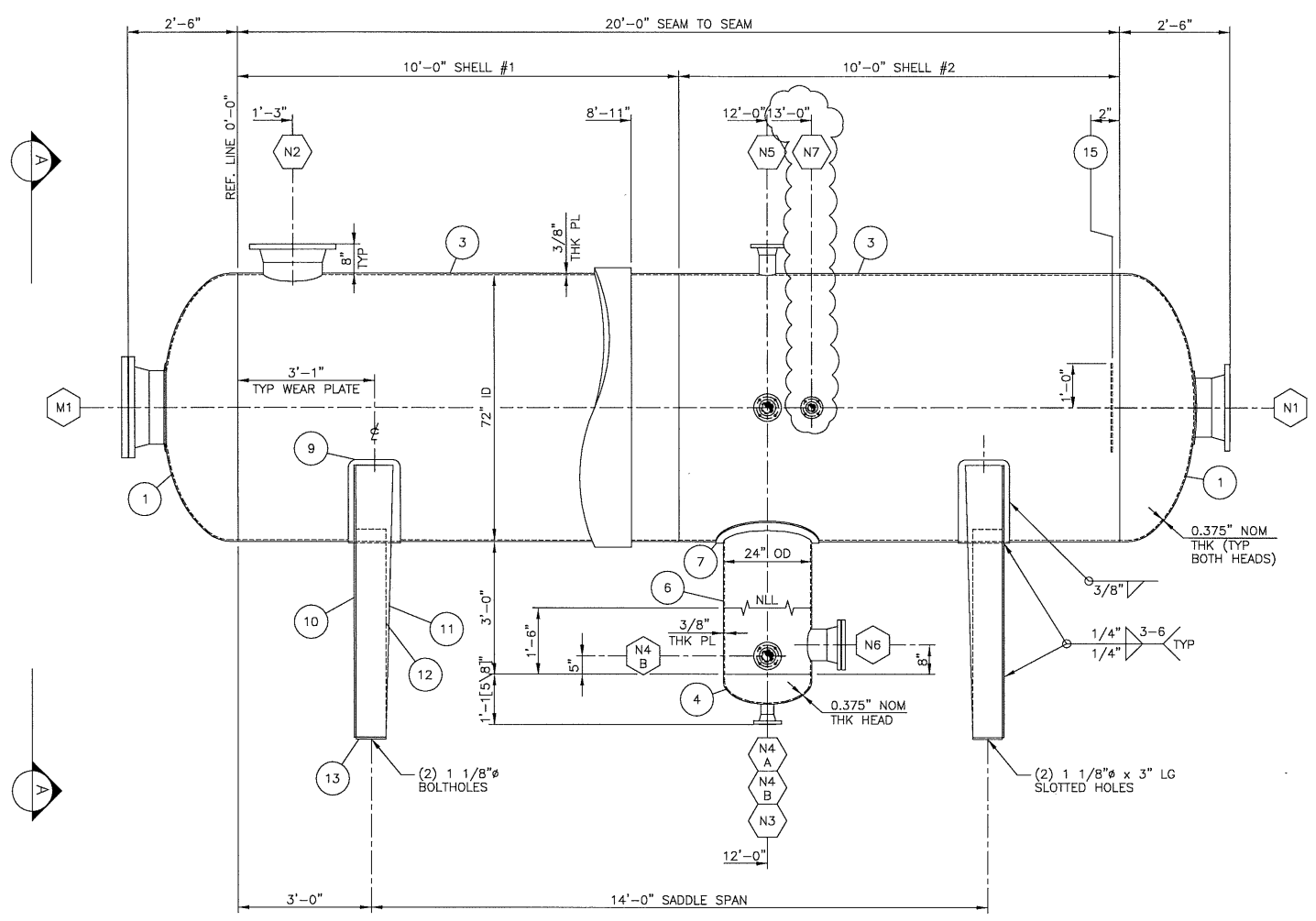
PM-109/126/127 PM-109/126/131 PM-109 PM-109 PM-109



SECTION "A-A"



BOOT ORIENTATION



GENERAL NOTES

1. WELDING PROCEDURES: WP-719.2
2. QUALITY CONTROL PROGRAM: AQP-1077
3. REFERENCE DRAWING NUMBER: STD. 2000 (WELD STANDARDS)
4. ALL BOLT HOLES TO STRADDLE CENTRE LINES
5. SERIAL NUMBER: 6423-20
6. SERVICE: CORROSIVE
7. LONG SEAM WPS: PM-109/127 CIRC. SEAM WPS: PM-126/127 NOZZLE TO FLG. WPS: PM-109/126/131 OTHER WELD WPS: PM-109
8. PRE-HEAT TO: 70°F (21°C) MIN IMPACT TESTS: EXEMPT PER UCS-66
9. SURFACE PREP. INT.: NONE EXT.: SSPC-SP6 (SEE NOTE #16)
10. SURFACE FINISH EXT.: (1) COAT ZINC PHOSPHATE PRIMER EXT.: (2) COATS WARM GRAY ENAMEL
11. INSULATION: 1 1/2\"/>

NOTES:

- 12) ALL BOLTING TO BE OF SPEC SA-193-B7M & SA-194-2HM MATERIAL.
- 13) ALL PRESSURE RETAINING MATERIAL TO BE CHEM SELECT AS FOLLOWS: CE=C + Mn/6 + (Cr + Mo + V)/5 + (Ni + Cu)/15 < 0.45
- 14) SANDBLASTING SHALL NOT BE CONDUCTED ON SURFACES THAT ARE LESS THAN 3' ABOVE DEW POINT, OR WHEN THE RELATIVE HUMIDITY OF THE AIR IS GREATER THAN 80%.
- 15) VESSEL OVER PRESSURE PROTECTION TO BE PROVIDED IN PIPING.

DESIGN DATA		
	NOM THK	MIN THK
SHELL	0.375" (9.5 mm)	0.375" (9.5 mm)
HEAD	0.375" (9.5 mm)	0.3125" (7.9 mm)
BOOT SHELL	0.375" (9.5 mm)	0.375" (9.5 mm)
BOOT HEAD	0.375" (9.5 mm)	0.3125" (7.9 mm)

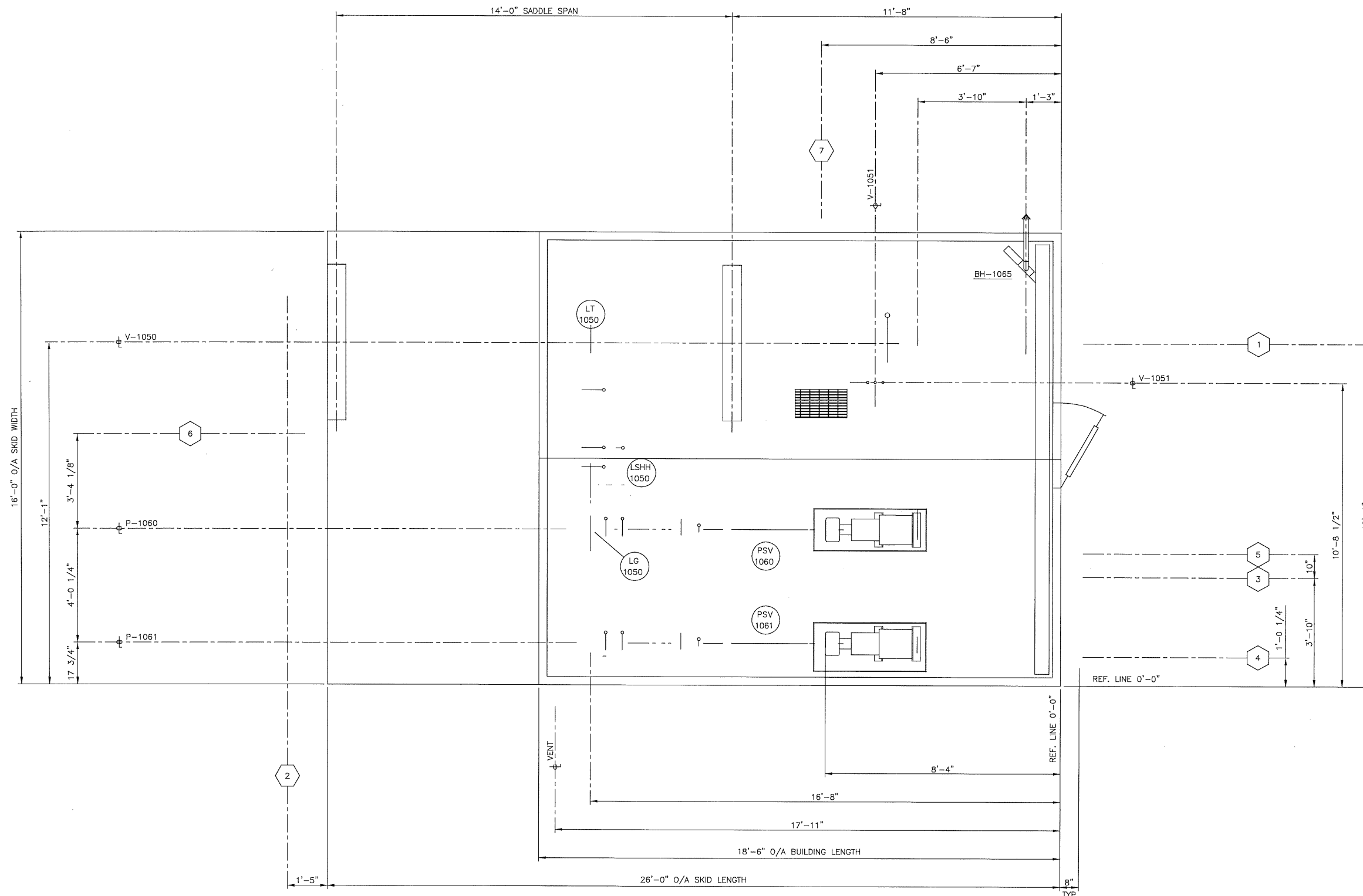
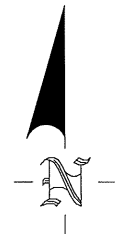
DESIGN DATA	
CODE: ASME SECTION VIII, DIV. 1, 1998 EDITION	ADDENDA
DESIGN PRESS. 345 kPa (50 PSIG), DESIGN TEMP. 93 °C (200 °F)	
MIN. DESIGN METAL TEMP. -40 °C @ 345 kPa (-40 °F @ 50 PSIG)	
M.A.W.P. @ MAX. TEMP. kPa @ °C (PSIG @ °F)	
M.A.W.P. NEW & COLD kPa (PSIG)	
HYDROSTATIC TEST PRESSURE 518 kPa (75 PSIG)	
CORROSION ALLOW. 4.76 mm (0.1875"), P.W.H.T. NONE	
RADIOGRAPHY SPOT PER RT-3	
HEAD THK. NOM. SEE mm (TABLE), MIN. SEE mm (TABLE)	
SHELL THK. NOM. SEE mm (TABLE), MIN. SEE mm (TABLE)	
VOLUME 18.2 cu m (642 cu ft.)	
WEIGHT EMPTY 5545 kg (12200 lbs)	
WEIGHT FULL OF WATER 23755 kg (52261 lbs)	

BILL OF MATERIALS

MARK	PART	DESCRIPTION	QTY	MATERIAL	WELD SYM
1	HEAD	72" ID x 3/8" NOM THK 2:1 SE HEAD c/w 2" SF (HOT FORMED)	2	SA51670N	K2-2
3	SHELL #1,#2	72" OD x 3/8" PL x 10'-0" LG	2	SA51670N	K2-1
4	BOOT HEAD	24" OD x 3/8" NOM THK 2:1 SE HEAD c/w 2" SF (HOT FORMED)	1	SA51670N	K2-2
6	BOOT	24" OD x 3/8" PL x 3'-2" LG	1	SA51670N	K2-1/J3-1
7	BOOT REPAD	28" OD x 3/8" PL x 24 1/8" ID (ROLL TO 72 3/4" ID)	1	SA51670N	J3-1
9	WEAR PL	14" x [3/8"] PL x 7'-0" LG (ROLL TO 72[3/4"] ID)	2	SA51670	
10	FACE PL	5'-6" x 3/8" PL x 6'-1 1/4" LG	2	SAG40.21.44W	
11	SIDE PL	8" x 10" x 3/8" PL x 6'-1 1/4" LG	4	SAG40.21.44W	
12	SADDLE SUPP	8" x 3/8" PL x 4'-8 1/2" LG	4	SAG40.21.44W	
13	BASE PL	8" x 1/2" PL x 5'-6" LG	2	SAG40.21.44W	
14	DAVIT	PRESSON STD DAVIT FOR 20" 150# RF BLIND FLG	1	SA-106B	
15	INLET DEFLECTOR	24" WIDE x 3/8" PL x 71 7/8" OD	1	SA51670	
N1	GAS INLET	16" 150# SCH XH RFWN FLG	1	SA350LF2	L1-1
		16" SCH XH SMLS PIPE x 5 1/2" LG	1	SA333GR6	J3-2
	REPAD	20" OD x 3/8" PL x 16 1/8" ID (DISH TO 72 3/4" OD HEAD) (USE CUTOFF OF M1)	1	SA51670N	J3-2
N2	GAS OUTLET	16" 150# SCH XH RFWN FLG	1	SA350LF2	L1-1
		16" SCH XH SMLS PIPE x 4 3/8" LG	1	SA333GR6	J1-1
N3	LIQUID OUTLET	3" 150# SCH 160 RFWN FLG	1	SA350LF2	L1-1
		3" SCH 160 SMLS PIPE x 3 1/8" LG	1	SA333GR6	J1-1
N4	BRIDLE	3" 150# SCH 160 RFWN FLG	2	SA350LF2	L1-1
	N4A	3" SCH 160 SMLS PIPE x 5 5/8" LG	1	SA333GR6	J1-2
	N4B	3" SCH 160 SMLS PIPE x 5 3/4" LG	1	SA333GR6	J1-2
N5	LT-1050	4" 150# SCH XH RFWN FLG	1	SA350LF2	L1-1
		4" SCH XH SMLS PIPE x 5 1/2" LG	1	SA333GR6	J1-1
N6	HAND HOLE	8" 150# SCH XH RFWN FLG	1	SA350LF2	L1-1
		8" SCH XH SMLS PIPE x 5 1/4" LG	1	SA333GR6	J1-1
		8" 150# RF BLIND FLANGE	1	SA350LF2	
		8" 150# RF x 1/8" THK FLEX GASKET	1	T316SS	
		3/4" x 4 1/4" LG STUDS c/w (2) NUTS EA	8	NOTE #12	
N7	PUMP VENT	2" 150# SCH 160 RFWN FLG	1	SA350LF2	L1-1
		2" SCH 160 SMLS PIPE x 5 7/8" LG	1	SA333GR6	J1-2
M1	MANWAY	20" 150# SCH STD RFWN FLG	1	SA350LF2	L1-1
		20" OD x 3/8" PL x 5 1/8" LG	1	SA51670N	K2-1/J3-2
		20" 150# RF BLIND FLANGE	1	SA350LF2	
		20" 150# RF x 1/8" THK FLEX GASKET	1	T316SS	
		1 1/8" x 6 1/4" LG STUDS c/w (2) NUTS EA	20	NOTE #12	
	REPAD	24" OD x 3/8" PL x 20 1/8" ID (DISH TO 72 3/4" OD HEAD)	1	SA51670N	J3-2
1	ADDED N7		D.S.		99/10/21
A	ISSUED FOR CONSTRUCTION		CM		99/10/19
A	ISSUED FOR APPROVAL		KB		99/08/20
NO.	REVISION		BY	CHECKED	DATE



CUSTOMER	ULSTER PETROLEUMS LTD.	
CUSTOMER REF. NO.	F-2186	JOB NO. B6423-20
PROJECT	LELAND LSD 07-02-59-26 W5M	
TITLE	WELLSITE FLARE KNOCKOUT DRUM (V-1050) 72" ID x 20'-0" S/S x 50 PSIG @ 200°F 1829 mm ID x 6096 mm S/S x 345 kPa @ 93°C	
DRAWN	CHECKED	APPROVED
KB		
SCALE	1/2"=1'-0"	DATE
		99/08/20
DRAWING NUMBER	B6423-200	



TIE-IN SCHEDULE

1	12-FL-5737-ASL-B SOUR GAS INLET EL. 9'-6 5/8" B.O.P.	5	2-FG-6737-CL-B FUEL GAS INLET EL. 9'-6 5/8" B.O.P.
2	16" 150# RF GAS TO FLARE EL. 13'-9 3/8" F.O.F.	6	1-FG-6738-ASL-B F.G. TO FLARE STACK EL. 7'-6" ⌀
3	2-DR-4740-DSL-B LIQUID TO PLANT EL. 9'-6 5/8" B.O.P.	7	2" 150# RF FLOOR DRAIN EL. -0'-7 1/2" ⌀
4	2-DR-4741-ASL-B LIQUID DRAIN EL. 0'-6" ⌀		

NOTES:

- 1) ALL ELEVATIONS ARE TAKEN FROM TOP OF CHECKER PL REF ELEV 0'-0".
- 2) FOR PIPING SURFACE PREP AND PAINT NOTES SEE INSTRUMENT LIST.
- 3) SHOP SUPPORT ALL PIPING AS REQUIRED
- 4) TOTAL APPROX PACKAGE WEIGHT: 35,000 lbs (15,909 kg).

NO.	REVISION	BY	CHKD.	DATE
D	ISSUED FOR CONSTRUCTION			99/10/20
A	ISSUED FOR APPROVAL			99/09/27

CUSTOMER REFERENCE F-2186



CUSTOMER:	ULSTER PETROLEUMS LTD.	JOB NO.:	B6423-00
PROJECT:	LELAND LSD 07-02-59-26 W5M		
TITLE:	WELLSITE FLARE KNOCKOUT PACKAGE GENERAL ARRANGEMENT		
DRAWN:	D.S.	CHECKED:	APPROVED:
SCALE:	1/2"=1'-0"	DATE:	99/09/27
DRAWING NUMBER:	B6423-300		