

NOZZLE SCHEDULE				
NO./NO. QTY.	DESCRIPTION	MAT'L	REMARKS	WT.(KG)
N1 1	Ø168 (6") 150# RFSO		021023-CGP-01D14	
N2 1	Ø114 (4") 150# RFSO		021023-CGP-01D14	
N3 1	Ø168 (6") 150# RFSO		021023-CGP-01D14	
N4 1	Ø89 (3") 150# RFSO		021023-CGP-01D14	
C1 1	COUPLING: Ø21 (½") 3000# FULL CPLG.	A105	FULL PROL.	1
C2 1	COUPLING: < (2") 3000# FULL COUPLING	A105	FULL PROL.	1
C3 1	Ø48 (1 ½") 3000# COUPLING			
	Ø48 (1 ½") BALL VALVE			
	Ø48 (1 ½") STD BLR NIPPLE x 102LG. TBE.	A108B		1
	Ø48 (1 ½") STD BLR SQ. HEAD PLUG			
C4 1	Ø11 (1/4") 3000# CPLG.			
C6 1	Ø27 (3/4") 3000# FULL CPLG. (FULL PROL.)	A105	HEATER GROUND	1
M1 1	2' x 4' MANWAY (CLEAN OUT DOOR)		DWG.: 13110	
M2 1	20" MANWAY		DWG. 13400	
M3 1	20" HINGED MANWAY c/w 12" NECK		DWG. 07501	
V1 1	Ø60 (2") SKIRT FRESH AIR INLET		020916-CGP-01D14	
V2 1	Ø60 (2") SKIRT VENT OUTLET		020916-CGP-01D14	

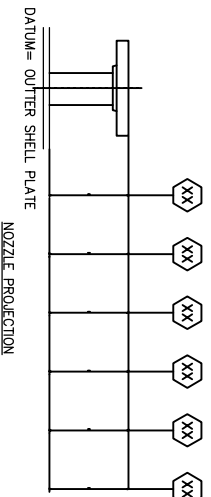
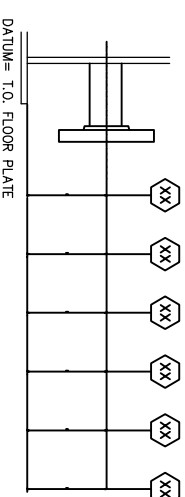
NO.	DATE	REVISIONS	BY	CHKD
1	02/11/04	RELOCATED C2 & CANCELED C5	JHZ	
0	--	ISSUED FOR CONSTRUCTION	JHZ	



THIS DRAWING IS THE EXCLUSIVE PROPERTY OF CORLAC DRUMS (USA) INC. NO PART OF THIS DRAWING SHALL BE REPRODUCED OR TRANSMITTED IN ANY FORM OR BY ANY MEANS, ELECTRONIC OR MECHANICAL, INCLUDING PHOTOCOPYING, RECORDING, OR BY ANY INFORMATION STORAGE AND RETRIEVAL SYSTEM, WITHOUT THE WRITTEN PERMISSION FROM CORLAC DRUMS (USA) INC.

CORLAC STOCK FKO DRUM  
GENERAL ARRANGEMENT  
25 BBL DOUBLE CONTAINED

DATE: 02/10/23  
DRAWN BY: JHZ  
CHECKED BY: JHZ  
SCALE: N.T.S.



REF.: