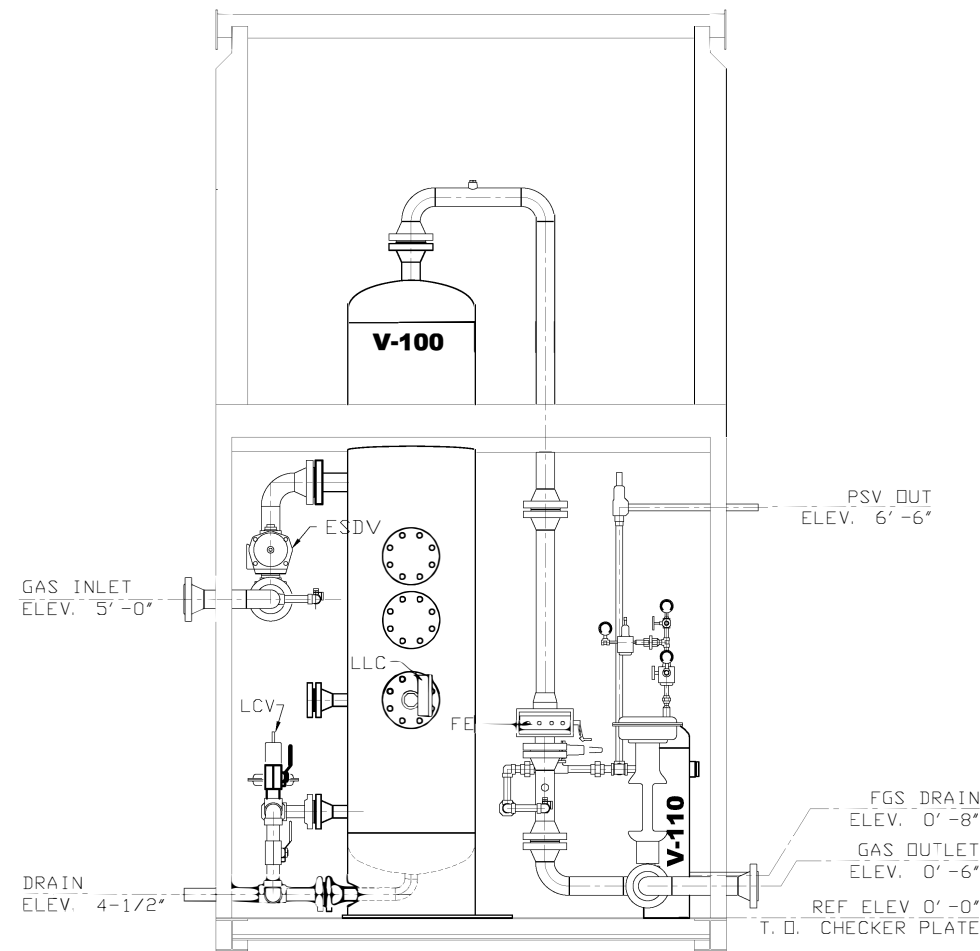
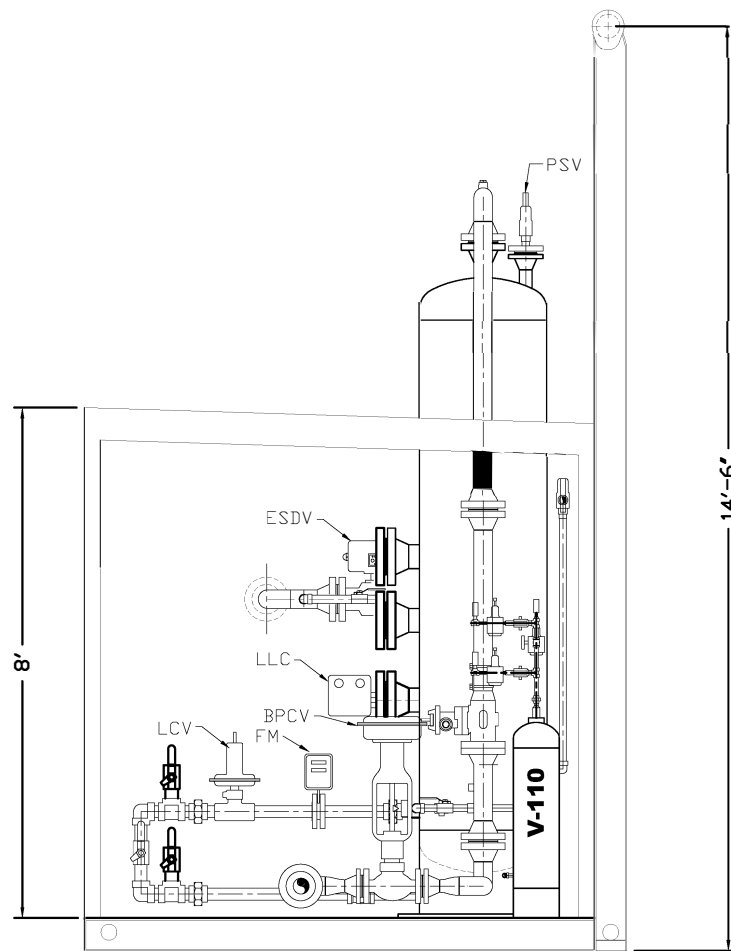


**PLAN VIEW**



**ELEVATION**



**SECTION VIEW**

**DESIGN NOTES**

**BUILDING**

- 1) 96" x 95.5 x 96"-100" EAVE SHED TYPE
- 2) 22 GAUGE GALVALUME EXTERIOR
- 3) 24 GAUGE FLUTED ALUMINUM INTERIOR
- 4) 3' x 7' INSULATED STEEL MANDDOOR c/w PANIC HARDWARE, AND LOCKSET.
- 5) 38" x 36" DOUBLE GLAZED SLIDING WINDOW WITH SCREEN
- 6) 12" x 12" MANUAL SLIDER WITH SCREEN (2 REQUIRED)

**GENERAL NOTES**

- 1) PIPING TO CONFORM TO ASME B31.3 LATEST EDITION
- 2) STRESS RELIEVING ON BUTT WELDED SPDDLS: YES  
WELDED PIPING STRESS RELIEVED FOR 1 HOUR @ 1150°F  
MAXIMUM HEATING: 400°F/HR FROM 800°F TO 1150°F  
MAXIMUM COOLING: 500°F/HR FROM 1150°F TO 800°F
- 3) SEE CHART FOR HYDRO TEST PRESSURE.
- 4) ALL INSTRUMENTATION IS AIR TESTED TO 30 PSIG
- 5) ALL INSTRUMENT TUBING IS TO BE VENTED OUTSIDE THE BUILDING.
- 6) APPROX WT OF PACKAGE: 8000 LBS.

**PIPING DESIGN**

- |                               |                                   |
|-------------------------------|-----------------------------------|
| 1) 1/2" THREADED L. P. LINES: | SCH 80 WITH 3000# FITTINGS        |
| 2) 1" THREADED H. P. LINES:   | SCH 160 WITH 3000# FITTINGS       |
| 3) 1" THREADED L. P. LINES:   | SCH 80 WITH 3000# FITTINGS        |
| 4) 2" THREADED H. P. LINES:   | SCH 160 WITH 3000# FITTINGS       |
| 5) 2" THREADED L. P. LINES:   | SCH 160 WITH 3000# FITTINGS       |
| 6) WELDED PIPING:             | SCH 80                            |
| 7) INSTRUMENT TUBING:         | 3/8" X 0.035" WALL 316SS          |
| 8) INSTRUMENT TUBE FITTINGS:  | 316SS SWAGELOK                    |
| 9) PROCESS TUBING:            | 1/2" X 0.035" WALL 316SS          |
| 10) PROCESS TUBE FITTINGS:    | 3/8" X 0.035" WALL 316SS SWAGELOK |

**MATERIALS**

- |                      |                    |
|----------------------|--------------------|
| 1) PIPE:             | SA106 GR. B        |
| 2) NPT FITTINGS:     | SA105N             |
| 3) FLANGES:          | SA105N             |
| 4) WELD FITTINGS:    | SA234 WPB          |
| 5) PRESSURE GASKETS: | 316SS FLEXITALIC   |
| 6) PRESSURE BOLTING: | 2HM NUTS/B7M STUDS |

**BLAST & PAINT**

- 1) SKID & PIPING BLASTED TO SSPC-SP7
- 2) SKID & PIPING PRIMED WITH ONE COAT OF ARGO SHOP PRIMER
- 3) SKID & PIPING FINISHED WITH ONE COAT OF CLOVERDALE ENAMEL

CUSTOMER:

**TITLE:**  
**24" O.D. x 8'0" S/S**  
**1440 PSI M.A.W.P. @ 130°F**  
**3 PHASE, DRESSED 2 PHASE,**  
**SOUR SERVICE SEPARATOR,**  
**CONSTRUCTION LAYOUT**

CUSTOMER:

TITLE:

**24" O.D. x 8'0" S/S 1440# @ 130°F**

SERIAL #: 231862

**NOTES**

- 1) SEE DRAWING # DM1870P FOR MATERIALS LIST.

**REVISIONS**

NO.	DESCRIPTION	BY:	DATE:
1	AS BUILT	MG	06.27.13
0	SHOP ISSUED	MS	03.08.13
NO.			

**ARGO SALES LTD**  
 655 - 30TH AVE.  
 NISKU, ALBERTA  
 T9E 0R4

DRAWN BY:	MS	SCALE:	N.T.S.
CHECKED BY:		DATE:	02/28/13
APPROVED BY:		QUOTE:	VQ13-021
		DWG. #:	DM1870L
SHEET	2 OF 2	REV.:	△