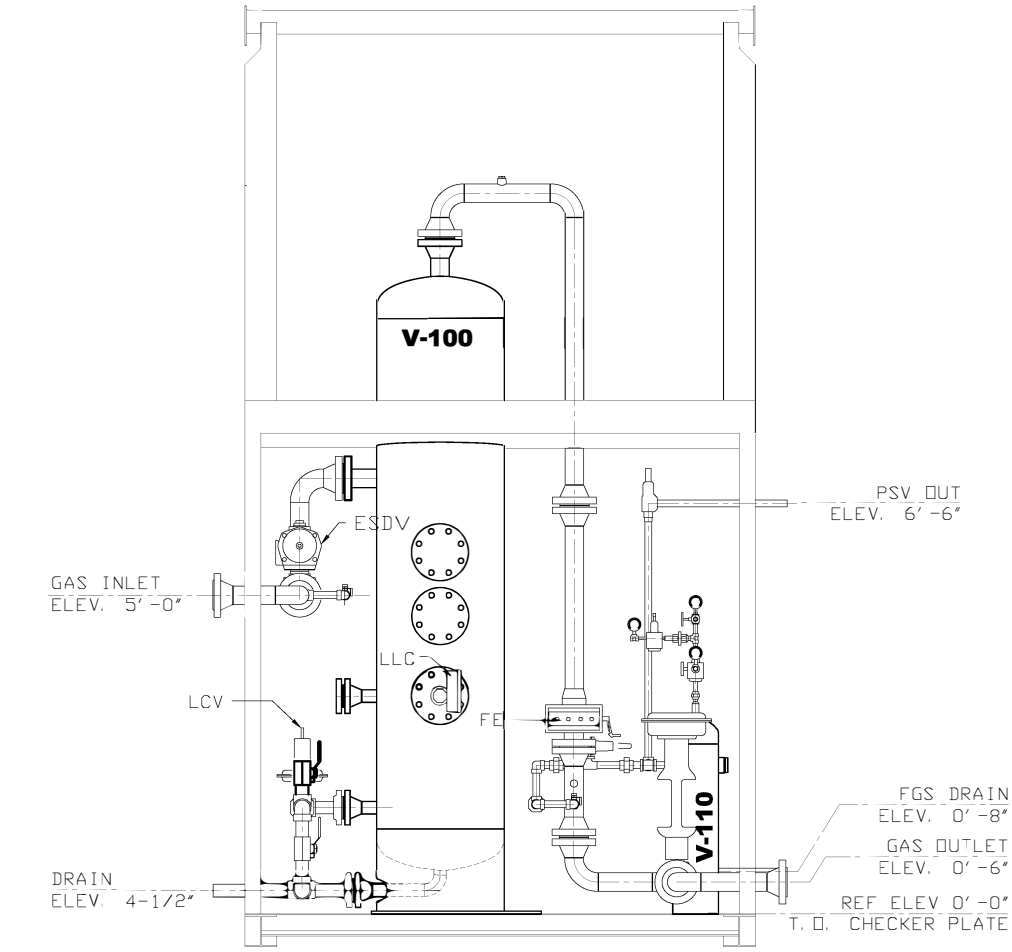
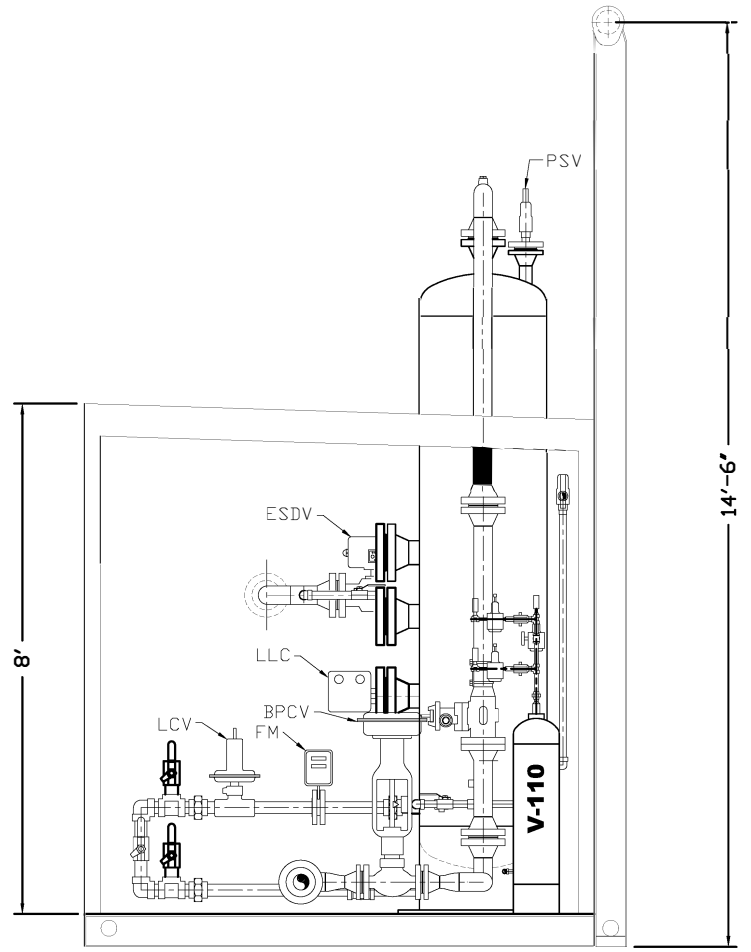


PLAN VIEW



ELEVATION



SECTION VIEW

DESIGN NOTES

BUILDING

- 1) 96" x 95.5 x 96"-100" EAVE SHED TYPE
- 2) 22 GAUGE GALVALUME EXTERIOR
- 3) 24 GAUGE FLUTED ALUMINUM INTERIOR
- 4) 3' x 7' INSULATED STEEL MANDDOOR c/w PANIC HARDWARE, AND LOCKSET.
- 5) 38" x 36" DOUBLE GLAZED SLIDING WINDOW WITH SCREEN
- 6) 12" x 12" MANUAL SLIDER WITH SCREEN (2 REQUIRED)

GENERAL NOTES

- 1) PIPING TO CONFORM TO ASME B31.3 LATEST EDITION
- 2) STRESS RELIEVING ON BUTT WELDED SPDDLS: YES
WELDED PIPING STRESS RELIEVED FOR 1 HOUR @ 1150°F
MAXIMUM HEATING: 400°F/HR FROM 800°F TO 1150°F
MAXIMUM COOLING: 500°F/HR FROM 1150°F TO 800°F
- 3) SEE CHART FOR HYDRO TEST PRESSURE.
- 4) ALL INSTRUMENTATION IS AIR TESTED TO 30 PSIG
- 5) ALL INSTRUMENT TUBING IS TO BE VENTED OUTSIDE THE BUILDING.
- 6) APPROX WT OF PACKAGE: 8000 LBS.

PIPING DESIGN

- | | |
|-------------------------------|-----------------------------------|
| 1) 1/2" THREADED L. P. LINES: | SCH 80 WITH 3000# FITTINGS |
| 2) 1" THREADED H. P. LINES: | SCH 160 WITH 3000# FITTINGS |
| 3) 1" THREADED L. P. LINES: | SCH 80 WITH 3000# FITTINGS |
| 4) 2" THREADED H. P. LINES: | SCH 160 WITH 3000# FITTINGS |
| 5) 2" THREADED L. P. LINES: | SCH 160 WITH 3000# FITTINGS |
| 6) WELDED PIPING: | SCH 80 |
| 7) INSTRUMENT TUBING: | 3/8" X 0.035" WALL 316SS |
| 8) INSTRUMENT TUBE FITTINGS: | 316SS SWAGELOK |
| 9) PROCESS TUBING: | 1/2" X 0.035" WALL 316SS |
| 10) PROCESS TUBE FITTINGS: | 3/8" X 0.035" WALL 316SS SWAGELOK |

MATERIALS

- | | |
|----------------------|--------------------|
| 1) PIPE: | SA106 GR. B |
| 2) NPT FITTINGS: | SA105N |
| 3) FLANGES: | SA105N |
| 4) WELD FITTINGS: | SA234 WPB |
| 5) PRESSURE GASKETS: | 316SS FLEXITALIC |
| 6) PRESSURE BOLTING: | 2HM NUTS/B7M STUDS |

BLAST & PAINT

- 1) SKID & PIPING BLASTED TO SSPC-SP7
- 2) SKID & PIPING PRIMED WITH ONE COAT OF ARGO SHOP PRIMER
- 3) SKID & PIPING FINISHED WITH ONE COAT OF CLOVERDALE ENAMEL

CUSTOMER:

TITLE:
24" O.D. x 8'0" S/S
1440 PSI M.A.W.P. @ 130°F
3 PHASE, DRESSED 2 PHASE,
SOUR SERVICE SEPARATOR,
CONSTRUCTION LAYOUT

NOTES	
1)	SEE DRAWING # DM1869P FOR MATERIALS LIST.

REVISIONS			
1	AS BUILT	MG	06.27.13
0	SHOP ISSUED	MS	03.08.13
NO.:	DESCRIPTION:	BY:	DATE:

DRAWN BY:	MS	SCALE:	N.T.S.
CHECKED BY:		DATE:	02/28/13
APPROVED BY:		QUOTE:	VQ13-021
		DWG. #:	DM1869L
SHEET	2 OF 2	REV.:	△

CUSTOMER:

TITLE:

24" O.D. x 8'0" S/S 1440# @ 130°F

SERIAL #: 231861