

H-100
 2. MMBTU/HR LINEHEATER
 SHELL: 54" O.D. x 20'-0" S/S
 REHEAT COIL: SIX (6) PASSES OF 3" SCH 80,
 2500# RTJ CONNECTIONS
 REHEAT COIL: SIX (6) PASSES OF 3" SCH 80,
 600# RF CONNECTION
 DISTILLATE HEAT COIL: TEN (10) PASSES 2" SCH 80,
 600# RF CONNECTIONS

BH-100
 THERMAT MODEL HA12.24
 12,000 BTU/HR
 SWEET NATURAL GAS
 12 VDC STARTING ELEMENT
 TVC & THERMOSTAT, REGULATORS
 PROTECTIVE GRILLE AND VENT HOOD

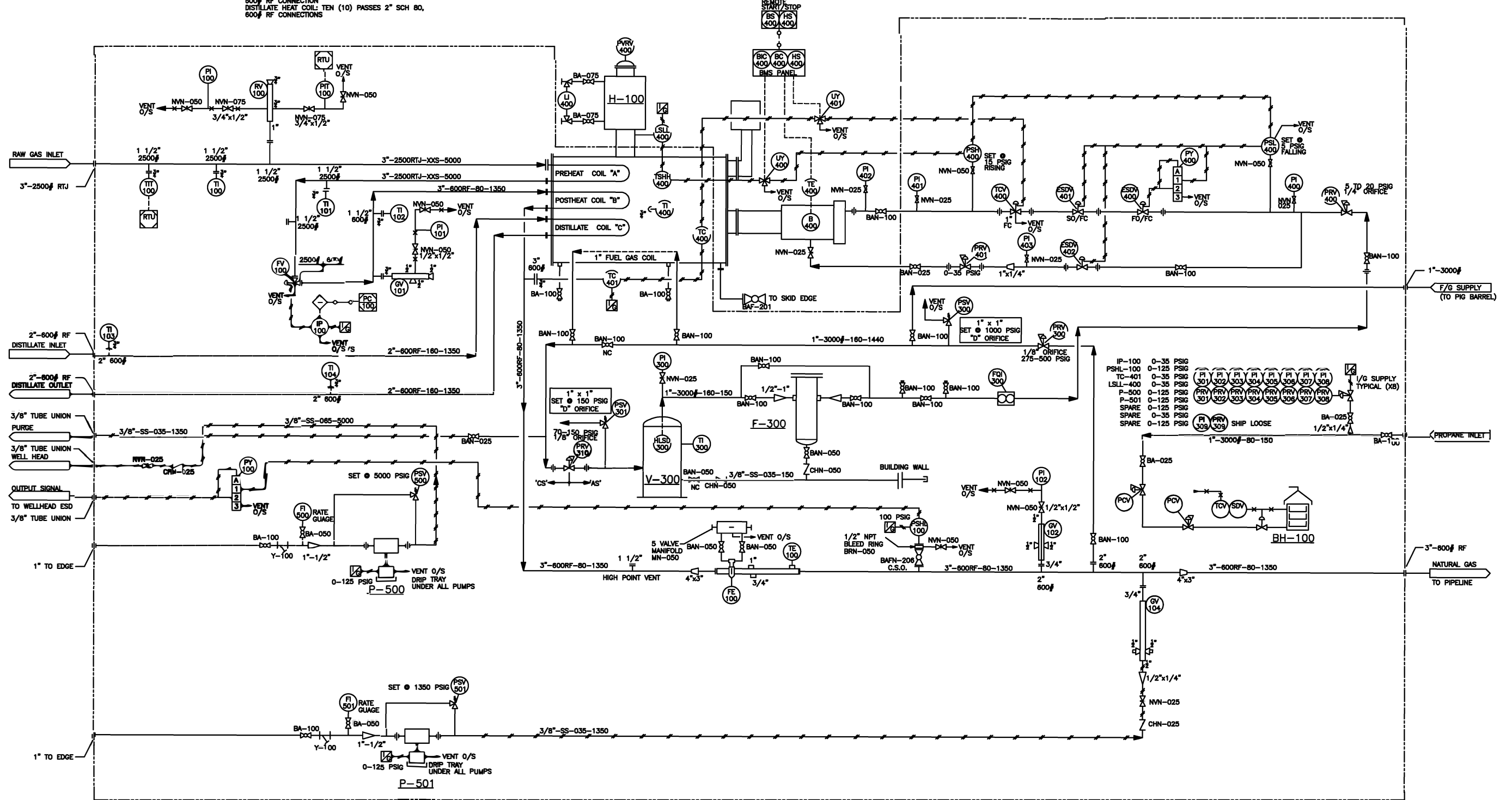
V-300
 FUEL GAS SCRUBBER (SOUR)
 10 3/4" O.D. x 30' S/S
 285 PSIG @ 100°F
 1/8", RT-1 X-RAY, PWHT

F-300
 HEADLINE COALESCING FILTER
 MODEL: 370 AP
 1/2" FNPT CONNECTIONS c/w
 70C COALESCING ELEMENT

P-500/501
 SP (METHANOL) / CORROSION INHIBITOR PUMPS
 LINC MODEL 841-11-81-4
 6.370 PSIG DISCHARGE PRESSURE
 1/4" PLUNGER SIZE, CERAMIC

FI-500/502
 CHEMICAL LEVEL/RATE GAUGE
 1/2" NPT CONNECTIONS

SOUR SERVICE



WELLSITE HEATER BUILDING SKID

PIPING CLASS LEGEND:

- *CS - 600 ANSI SOUR (FUEL GAS & PROCESS)
- *AS - 150 ANSI SOUR (FUEL GAS & PROCESS)
- *A - 150 ANSI SWEET (INSTRUMENT GAS & RELIEF)

No.	DATE	REVISION	DWN	CHK	APP.
A	04/12/16	ISSUED FOR APPROVAL	GG		



PRODUCT:			
2MMBTU/HR SOUR LINEHEATER P & ID			
SCALE:	JOB No.:	DWG. No.:	REV.
1" = 1'-0"	04-7069	CPT04-7069-001	A
MATERIAL SHOWN FOR ONE (1) UNIT ONLY - ONE (1) UNIT REQUIRED			

THIS DRAWING IS THE PROPERTY OF COMPLETE PACKAGE TECHNOLOGY (2000) LTD. ANY REPRODUCTION IN WHOLE OR PART WITHOUT EXPRESS PERMISSION IS PROHIBITED