

**Y-101**  
INLET SEPARATOR  
VERTICAL 2 PHASE  
12 3/4" OD x 5'-0" SEAM/SEAM  
1400 PSIG MWP @ 100°F  
1/16" CORROSION ALLOWANCE  
SWEET SERVICE  
-20°F MONT

**Y-102**  
EXHAUST SCRUBBER  
2 3/8" OD x 3'-0" SEAM/SEAM  
14.9 PSIG MWP @ 100°F  
1/16" CORROSION ALLOWANCE  
SWEET SERVICE  
-20°F MONT

**P-101**  
INJECTION PUMP  
TIT MODEL 5113 LP  
6000 PSIG MAXIMUM DISCHARGE PRESSURE  
16 IMP. GALLONS PER DAY

**T-101**  
60 BBL STORAGE TANK  
DOUBLE WALL (TIGHT WRAP)  
7'-5" OD x 8'-0" HIGH

**T-102**  
250 GALLON STORAGE TANK  
MUSCO STANDARD

**H-101**  
BUILDING HEATER  
FLAMELESS INFRA-RED NATURAL GAS  
CATALYTIC MODEL WX-24x24  
12,000 BTU/HR

**F-101**  
FUEL GAS FILTER  
FLO-ORI MODEL G-10-AA  
CRN 011609.2  
DESIGN PRESS: 150 PSIG  
DESIGN TEMP: -50°F TO 200°F

**AS BUILT**

APR 22 2014

- NOTE:**
- 1) MOUNT FI-101 EVEN WITH BOTTOM OF T-102
  - 2) PRV-100 IS TO BE MOUNTED AS CLOSE AS POSSIBLE TO F-101
  - 3) USE TUBING UP TO PUMP (AS CLOSE AS POSSIBLE)
  - 4) THERE ARE (2) TWO SPOOL SHEETS WITH THIS DRAWING SERIES.
  - 5) FLOAT AND ROD TO BE SHIPPED LOOSE FOR FIELD INSTALLATION.
  - 6) SHOP TO SECURE THE LEVEL INDICATOR FLOAT FOR SHIPPING
  - 7) MANWAY COVER TO BE COMPLETELY BOLTED TO TANK
  - 8) LOCATE TEE c/w PLUG AT FIRST CHANGE OF DIRECTION DOWNSTREAM OF LCY-100 (THIS APPLIES STARTING AT W.O. 007864).

PART	DESCRIPTION	PART	DESCRIPTION
PSV-100	TAYLOR MODEL 8200 PRESSURE RELIEF VALVE	FI-101	GRESCHNER MODEL 60-130 LIQUID RATE LEVEL GAUGE
PSV-101	TAYLOR MODEL 8200 PRESSURE RELIEF VALVE	PRV-100	FISHER MODEL 627 PRESSURE REDUCING REGULATOR
PSV-102	SS-4CP2-1 (1/4" MNP) CHECK VALVE	PRV-101	FISHER MODEL 67CFR INSTRUMENT GAS REGULATOR
PSV-103	MURRO MODEL SS-AR3AS-C-BU PIPE-ENDED CHECK VALVE	PRV-102	FISHER MODEL 67CFR INSTRUMENT GAS REGULATOR
FE-100	NORTH STAR SIMPLEX METER RUN	PRV-103	FISHER MODEL 912N-115 PRESSURE REDUCING REGULATOR
FI/PI/TT c/w TE-100	ROSEMOUNT MODEL 3095FB30AB13A0111CN MULTIVARIABLE TRANSMITTER WITH MODBUS RTU PROTOCOL	PI-100	NUOVA FMA MODEL MGS18/3A-421 PRESSURE GAUGE
LSH-100	WELLMARK PNEUMATIC LEVEL SWITCH MODEL ST2TP w/ OVERRIDE	PI-200	NUOVA FMA MODEL MGS18/3A-213 PRESSURE GAUGE
LC-100	FISHER MODEL L2 LEVEL CONTROLLER	TI-100	GAUGETECH MODEL GT36-02 TEMPERATURE INDICATOR
LCY-100	FISHER DZ FLOPRO CONTROL VALVE	LI-101	GAUGE BOARD
LC-101	PENBERTHY REFLEX LEVEL GAUGE		

REV.	DATE	DRWG.	APP'D.	DESCRIPTION	SCALE	S.D.	007860-245 TO 007894-245	DISCUSSION FILE NO.	007860-245 TO 007894-245	007860-245 TO 007894-245
1	04/04/22	IE		AS - BUILT	3/4"=1'-0"					
0	04/04/12	NCS		REMOVED FROM D1523-001 (ISSUED FOR CONSTRUCTION).						

**NUSCO** MANUFACTURING & SUPPLY LTD.

ENCANA RESOURCES P.O. 6300-0001  
C/O DPH ENGINEERING INC. DPH JOB NO. 6300

WELLSITE SEPARATOR / TANK PACKAGE

DISCUSSION FILE NO. E0238-03000

SCALE: 3/4"=1'-0" S.D. 007860-245 TO 007894-245

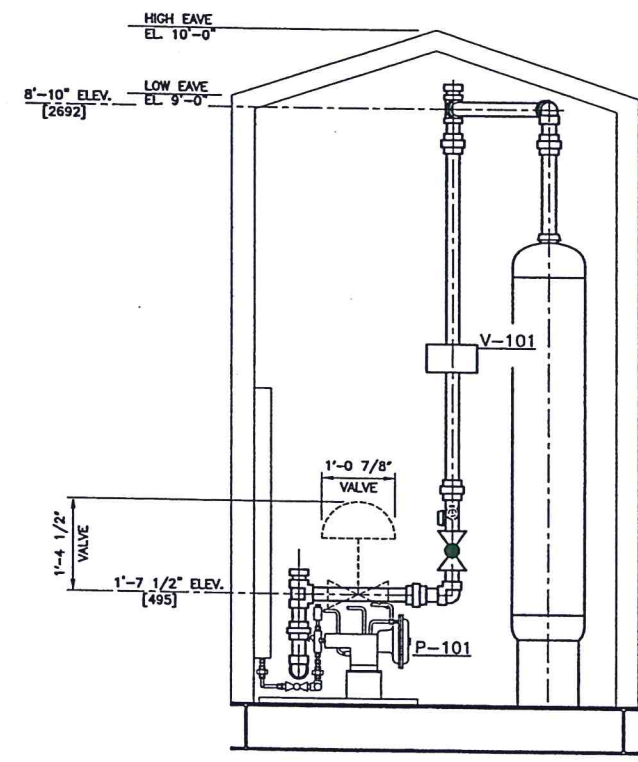
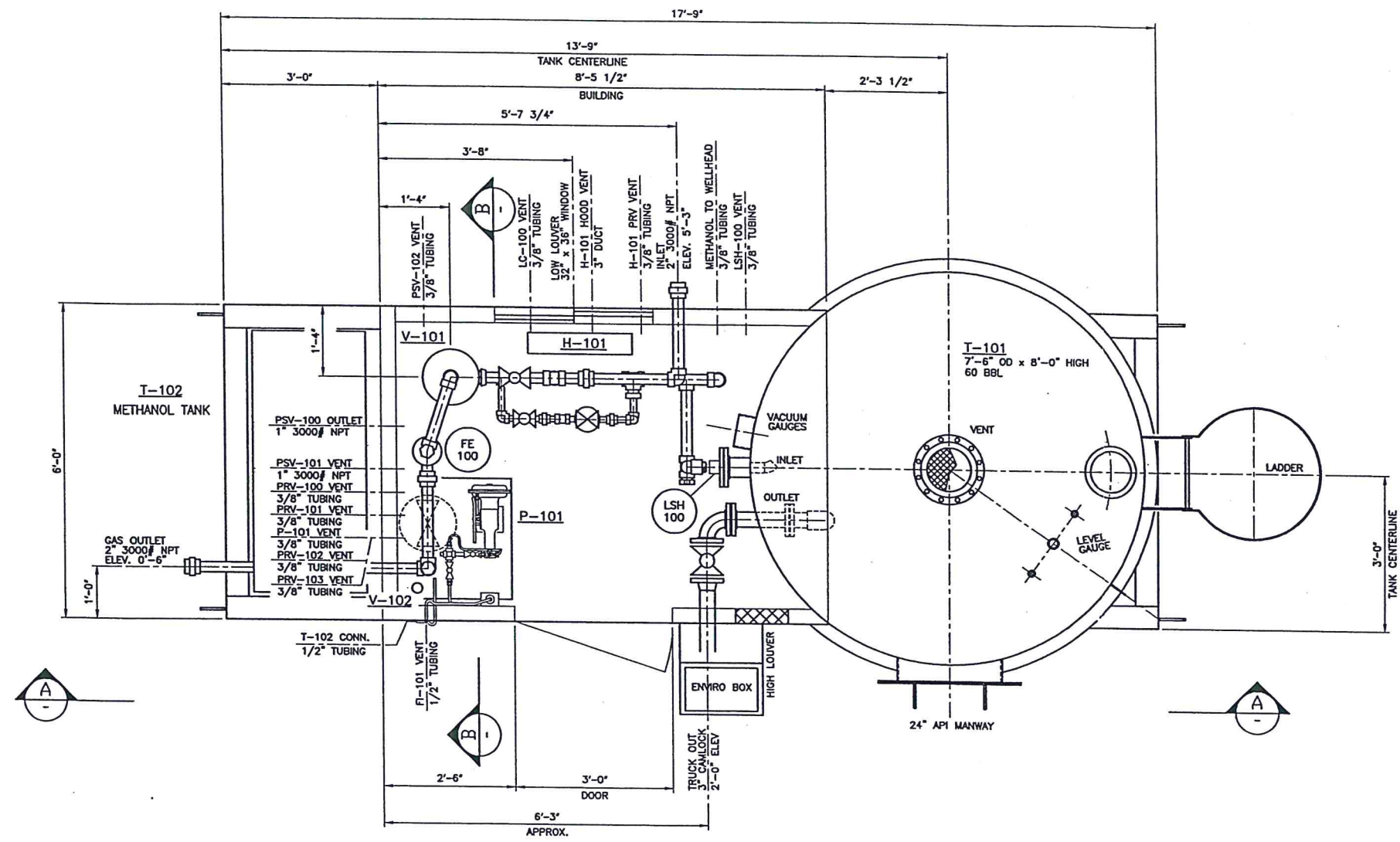
DATE: 03/12/11

REV. 1



**GENERAL NOTES:**

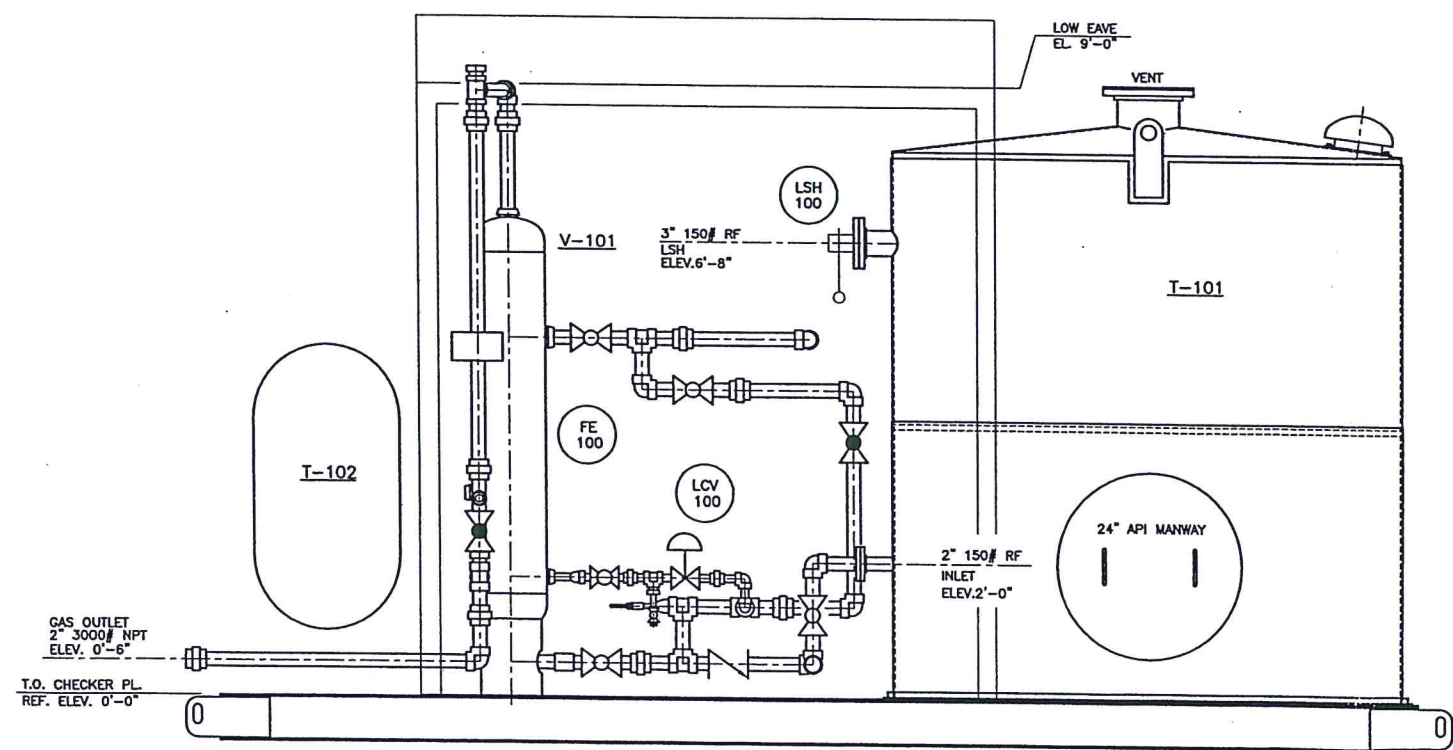
- 1) REFERENCE ELEVATION TOP OF CHECKER PLATE.
- 2) TOTAL DEPTH OF SKID INCLUDING 3/16" CHECKER PLATE: 8 5/16"
- 3) LOW VENT TO BE LOCATED DIRECTLY BEHIND H-200 AND TO BE 6" OFF THE FLOOR.
- 4) SHOP TO PROVIDE DRIP PAN AROUND PUMP (P-101).
- 5) SHOP TO APPLY 2 1/2" THK FIRE RETARDANT URETHANE FOAM INSULATION TO UNDERSIDE OF CHECKERPLATE.



**AS BUILT**  
APR 22 2011

(45) REQUIRED

TOTAL APPROX. SHIPPING WEIGHT: 9000 LBS  
TOTAL APPROX. SHIPPING DIMENSIONS: 19'-0" LG x 8'-6" WIDE x 10'-10" HIGH.



**A**  
ELEVATION

REV.	DATE	DRGN.	APPR.	DESCRIPTION	SCALE:	BL.	QUOTATION FILE No.
4	04/04/22	IE		AS - BUILT	3/4"=1'-0"	007850-245 TO	E0238-03000
3	04/03/11	IE		AS - BUILT (W/O 007850 ONLY)	03/12/11	007894-245	D1523-100
2	04/02/20	YB		CHANGED ELEVATIONS. ISSUED FOR CONSTRUCTION			
1	01/01/30	KCS		OUTLET PIPING REVISED, ROOF WAS SHED STYLE (FC)			
0	04/01/17	KCS		ISSUED FOR CONSTRUCTION			
B	04/01/12	IE		ISSUED FOR APPROVAL			
A	03/12/11	IE		ISSUED FOR QUOTATION			

**A NUSCO** MANUFACTURING & SUPPLY LTD.

CUSTOMER: ENCANVA RESOURCES  
C/O DPH ENGINEERING INC.  
WELLSITE SEPARATOR / TANK PACKAGE  
PIPING PLAN & SECTIONS