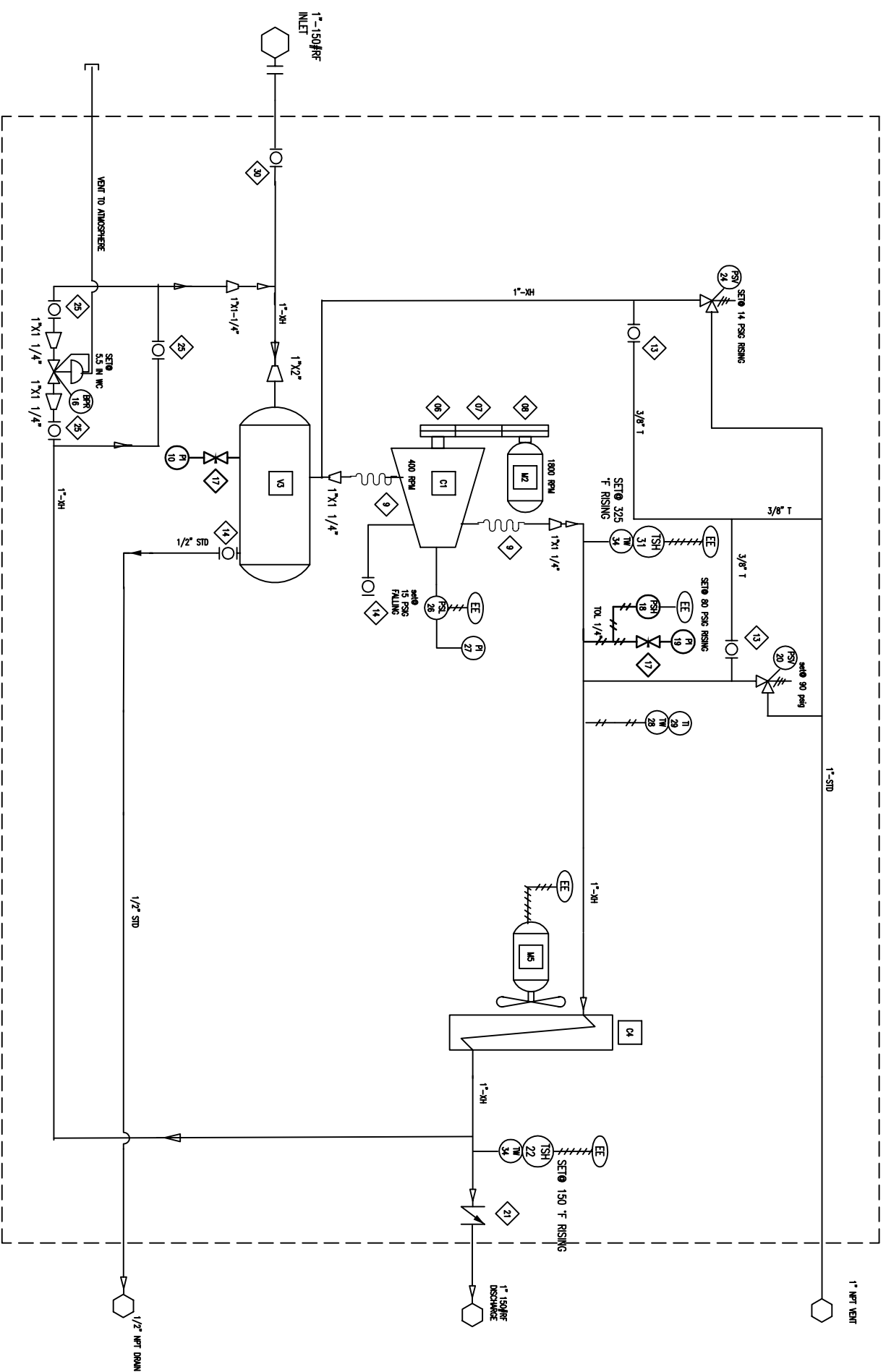


NOTES
ALL SYMBOL LEGENDS ARE MAIN TO A JUNCTION BOX FOR
EXTERNAL CONTROL.
THE SNOO IS TO BE ENCLOSED IN AN INSULATED BUILDING



PERFORMANCE

INLET PRESSURE (OZ)	2-3
DISCHARGE PRESSURE (PSIG)	45
COMPRESSOR SPEED (RPM)	400
FLOW RATE (MSCFD)	36

RELEASED FOR FABRICATION
PROJECT ENG. _____ \$750 _____ 100
JOB# 20092 DATE 28/09/2002

ITEM/NO	PART NO	DESCRIPTION	NOTES
1	1 GRNG-240	COMPRESSOR DRNG 240	QUINCY
2	1 EMHX11AN	NEW 5 H.P., EXPLOSION PROOF, 208/230/460/3/60, 1800 RPM, MOTOR	STANDARD
2	1 SLIDE 184T	SLIDE BASE 184T FRAME DOUBLE	
3	1 A10124	HORIZONTAL DUPLEX PEDESTAL (GRASSHOPPER) 200 PSIG MHP	
4	1 CC100-3-R-CRN	COOLER C/W ELECTRIC MOTR, FAN, FINGERGUARD AND SHROUD REVERSE FLOW, CRN	ARG
5	1	MOTOR 1/2 HP, EXPLOSION PROOF, 230/460/3/60 3600 RPM	
6	1	DRIVEN SHEAVE 2B16 (SUPPLIED WITH QUINCY 240)	
7	2 BELT BX69	TRANSMISSION BELTS BX69 FOR 18" CENTERS	
8	1 SHEAVE 2B36	DRIVING SHEAVE 2B3.6	
8	1 BUSHING SH 102	BUSHING SH 1-1/8"	
9	2 MCX-1 1/4-9	FLEXIBLE HOSE SCH 80 1-1/4" X 9" LONG HEX NUTS	
10	1 G22706	PI 0-15 OZ 2-1/2" X 1/4 BTM DRY	
13	2 50725	BALL VALVE 1/4" 2000# THD RP LCC BDY 316 TRIM NACE NAVCO	
14	2 50726	BALL VALVE 1/2" 2000# THRD RP LCC 316SS BDY & TRIM NAVCO	
16	1 S302	REG 1-1/4" 5.5" - 8" W.C. 1/4" ORIFICE, INTERNAL RELIEF, FISHER, SET @ 5.5 W.C	
17	2 194851	NEEDLE VALVE 1/4"NPT, 303SS, 6000#	
18	1 6900GE16	PRESSURE SWITCH SET@80 PSIG RISING, LOCAL MOUNT, DUAL SNAP, X-PROOF	
19	1 W/7848P	PRESSURE INDICATOR 0-100 PSIG, LOCAL MOUNT, 2-1/2" DIAL, LIO FILLED, SS	
20	1 W9501-RS90	RELIEF VALVE 1"NPTX1"NPT SET@90PSIG RISING	
21	1 FB-100	ARGUS 1" CS 3000# CHECK VALVE	
22	1 6900TE14	SWITCH TEMPERATURE DUAL SWAP NEMA 4 80-205 DEG F SET @ 150 F RISING, XP	
24	1 TAB200-1-14	PSV 1" SET AT 14 PSI TAYLOR	
25	3 50727	BALL VALVE 1" 2000# THD RP LCC 316SS BDY & TRIM NAVCO	
26	1 6900GE12	SWITCH PRESSURE DUAL SNAP 1-18 PSIG SET AT 15 PSI DECREASING	
27	1	PRESSURE INDICATOR (PART OF QUINCY)	
28	1 5X5X2.5316	THERMOWELL 1/2 X 1/2 X 2-1/2 316SS	
29	1 L31107	PI 0-500 F GCM 1/2" NPT 2.5" DIAL DRY	
30	1 BALL VLV 1"	BALL VALVE 1" 3000# THRD RP	
31	1 6900TE18	SWITCH TEMPERATURE DUAL SWAP NEMA 7 185-315 DEG F SET @ 325 F RISING, XP	
32	1 SWITCH	LOCAL ON/OFF SWITCH	BY ALORO
33	2 ESD	ESD	BY ALORO
34	2 5X5X6316	THERMOWELL 1/2 X 1/2 X 6 316SS	

REV	DESCRIPTION	DATE	APPROVED
C	ADDED ELECTRICAL, UPDATED TO AS-BUILT	10/10/2001	EU

REV	DESCRIPTION	DATE	APPROVED
C	ADDED ELECTRICAL, UPDATED TO AS-BUILT	10/10/2001	EU

BRITANNIA COMPRESSION
CE FRAZER HARRISON CIVILS

PROCESS AND INSTRUMENTATION DIAGRAM
VRU - Quincy 240/ 5HP

Drawn	EU	Date	18/NOV/2002
Checked	EU	Date	
Approved	EU	Date	
Scale	NTS	Weight (est.)	
Sheet	1 of 1	Size	D
Rev	B	Dwg No.	1-1353

THE DESIGN AND SPECIFICATIONS ON THIS DOCUMENT ARE THE PROPERTY OF BRITANNIA COMPRESSION LTD. AND SHALL NOT BE REPRODUCED OR COPIED IN ANY FORM WITHOUT WRITTEN PERMISSION BY AN OFFICER OF THE COMPANY.