

CUSTOMER:

**TERRA ENERGY c/o
GREAT PLAINS ENG.**

TITLE:

16" x 7'6" 1440# SOUR SEPARATOR

SERIAL #:

PE9682-85

BILL OF MATERIALS

MARK QTY. DESCRIPTION

| | | |
|------------|---|--|
| LLC 100 | 1 | 2" NPT, NORRISEAL 100IE LIQUID LEVEL CONTROLLER, 25M60-NERD, DIRECT ACTING, C/W HANG DOWN FLOAT, SOUR |
| BPCV 100 | 1 | 2" 600 ANSI RF, MERIDIAN (BAKER) BTE MAP 2100, SOUR |
| LCV 100 | 1 | 1" NPT, NORRISEAL 2220 LEVEL CONTROL VALVE, 3/8" TRIM, SOUR |
| PRV 110 | 1 | 1" NPT, FISHER 627 REGULATOR, 1/8" DRIFICE, 70 - 150#, STEEL BODY, NYLON DISK, SOUR |
| PRV 111 | 1 | 1/4" NPT, FISHER 67 CFR REGULATOR, 5 - 35#, VENTED BONNET, SOUR |
| PRV 112 | 1 | 1/4" NPT, FISHER 67 CFR REGULATOR, 5 - 35#, VENTED BONNET, SOUR |
| LG 100 | 1 | 3/4" NPT, PENBERTHY 1RM6 REFLEX GAUGE GLASS, C/W 330J GAUGE COCKS, SOUR |
| PI 100 | 1 | 1/2" NPT x 4" FACE, PRESSURE GAUGE, 0 - 1500#, SOUR |
| PI 110 | 1 | 1/4" NPT x 2-1/2" FACE, PRESSURE GAUGE, 0 - 200#, SOUR |
| PI 111 | 1 | 1/4" NPT x 2-1/2" FACE, PRESSURE GAUGE, 0 - 60#, SOUR |
| PI 112 | 1 | 1/4" NPT x 2-1/2" FACE, PRESSURE GAUGE, 0 - 60#, SOUR |
| TI 100 | 1 | 1/2" NPT x 3" x 6" STEM, TEMPERATURE INDICATOR, -40° TO 160°F, C/W 316SS THERMOWELL, SOUR |
| FE 100 | 1 | 3" 600# RF, DANIEL SENIOR DRIFICE FITTING METER RUN, AGA 1991, SCH 80, RIGHT HAND CRANK, <<RECONDITIONED>>, SOUR |
| PSV 100 | 1 | 1" NPT, TAYLOR 8200 PRESSURE SAFETY VALVE, SET @ 1440#, SOUR |
| PSV 110 | 1 | 1" NPT, TAYLOR 8200 PRESSURE SAFETY VALVE, SET @ 150#, SOUR |
| HLSD 110 | 1 | 2" NPT, LARSEN & J' AMICO HIGH LEVEL FUEL-GAS SHUTDOWN, SOUR |
| BV1T-2MS | 5 | 1" NPT 2000#, STOCK BALL VALVE, SOUR |
| BV2T-2MS | 1 | 2" NPT 2000#, STOCK BALL VALVE, SOUR |
| CV1T-2160S | 1 | 1" NPT 2160#, WHEATLEY CHECK VALVE (SWING), SOUR |
| CV2P-600S | 1 | 2" 600# RF, WHEATLEY CHECK VALVE (SWING), 910-025144-822, SOUR |
| NV1/2-6M | 6 | 1/2" 6000#, ANDERSON GREENWOOD NEEDLE VALVE, 316SS TRIM |
| NV1/4-6M | 1 | 1/4" 6000#, ANDERSON GREENWOOD NEEDLE VALVE, 316SS TRIM |
| SVALVE-- | 1 | 5 VALVE, ANDERSON GREENWOOD BAR MANIFOLD |

**CUSTOMER: TERRA ENERGY c/o
GREAT PLAINS ENG.**

**TITLE: 16" O.D. x 7'6" S/S
1440# MAWP @ 100°F
3 PHASE, DRESSED 2 PHASE
SENIOR & D-BODY, SOUR**



P.O. Box 1160
NISKU INDUSTRIAL
PARK
NISKU, ALBERTA
T9E 6A8

ARGO
SALES LTD

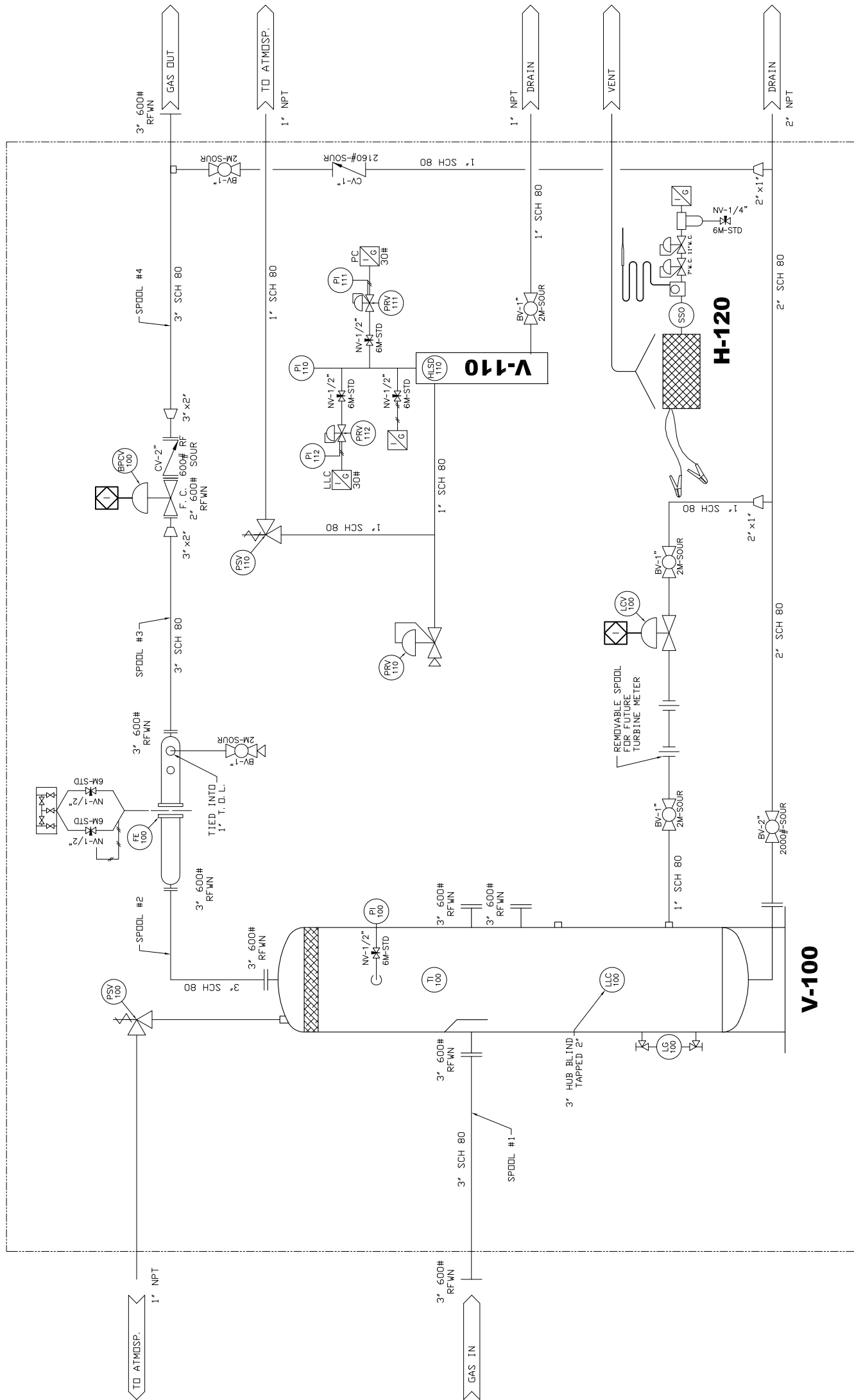
SCALE: N.T.S.
DATE: 03/21/06
CHECKED BY:
APPROVED BY:
DWG. #: DM1270P
SHEET 1 OF 3 REV: Δ

SKID
7' x 7' "EL" SKID
PRODUCT #12872

H-120
C.C.I. WX 24x24 (16,000 BTU/HR
RATING) CATALYTIC HEATER,
PROPANE GAS, GRILL GUARD,
SAFETY SHUT OFF, THERMOSTAT,
VENT HOOD SOUR GAS FILTER, 25'
OF 12 VOLT START CABLES

V-110
8" O.D. x 36" S/S
150# M.A.W.P. @ 100°F
FUEL GAS SCRUBBER
STRESS RELIEVED

V-100
16" O.D. x 7'6" S/S
1440# M.A.W.P. @ 100°F
3 PH, DRESSED 2 PH
STRESS RELIEVED
100% X-RAY, SOUR



BUILDING PERIMETER

REVISIONS

| NO. | DESCRIPTION | APPROVAL | DATE |
|-----|-------------|----------|----------|
| 0 | | | 03.21.06 |

NOTES

- SEE DRAWING # DM1225L FOR DESIGN NOTES.
- UNDERSIDE OF SKID IS 3" SPRAYED POLYURETHANE WITH FIRE RETARDANT SEALER.

SPOOL DATA

| SPOOL # | WEL PROC. | X-RAY | STRESS | DESIGN | TEST |
|----------|-----------|-------|--------|--------|-------|
| 1 thru 4 | ASL-8 | 100% | YES | 1440# | 2160# |