

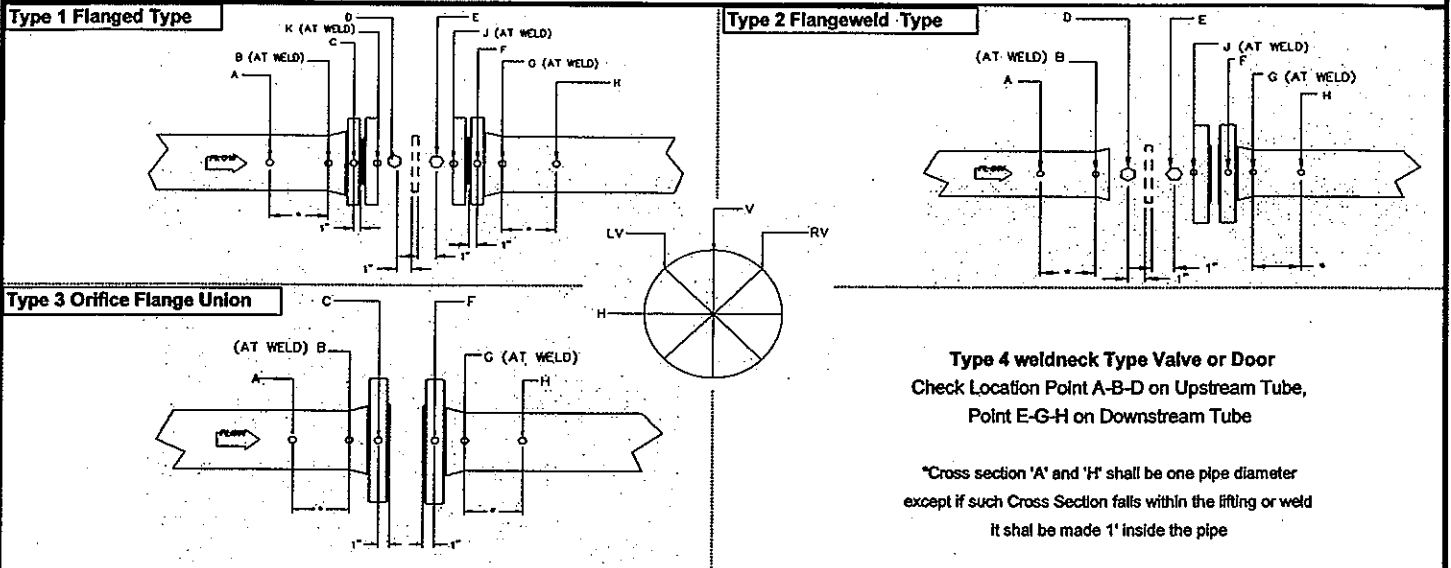
**R.J.V. GAS FIELD SERVICES LTD.  
UNIT IDENTIFICATION SHEET**

<b>COMPANY:</b> CANADIAN NATURAL RESOURCES		<b>JOB #</b> 04-3195	<b>UNIT#</b> 11275		
<b>P.O#</b>	<b>AFE# F05L-3611-C197</b>	<b>SO# 15663</b>	<b>DRAWING#</b> 04-3195-1 (R1)		
<b>REQUESTED BY:</b> Aaron Tannas		<b>LOCATION:</b> 04-12-39-21 W4	<b>AREA:</b>		
<b>DESCRIPTION:</b> 16" x 7'6" s/s, 600# ANSI, 1440 PSI, 3-PHASE VERTICAL MISTEX, SWEET SERVICE, SINGLE ZONE SEPARATOR - DUAL METER/15,000L TANK SKID UNIT c/w 2"600# ANSI JUNIOR METER RUNS, 2" 600# ANSI INLET AND OUTLET CONNECTIONS					
DESCRIPTION		MAKE	MODEL	SERIAL	
METER RUN		Nu Flo	2" 600 Sch 80 JR FIG 3A	EV05285	
METER RUN		Nu Flo	2" 600 Sch 80 JR FIG 3A	EV05297	
RECORDER		Cavern Oil	2 Model 202A, 2-PEN, 0-1500 PSI	45254	37639
SEPARATOR		R.J.V. Gas Field	16"x7'6"s/s 600# 3 PHASE	9338	A#529028
LIQUID LEVEL CONTROL		Norriseal	2" NPT, 1001A, 2SM60SLDL-AA	94639	
LEVEL CONTROL VALVE		Norriseal	1" NPT, 2275, S40RTV9BA4	95079	
SIGHT GLASS		Penburthy	1TM5 Level Gauge w/ #330J GAUGE COCKS		
PRESSURE	VESSEL	Hydroseal	1" x 1" NPT, Model 14E3M0V00	D19119	1440 PSI
SAFETY VALVES	FUEL GAS	Hydroseal	1" x 1" NPT, Model 14E3M0V00	1186-121	150 PSI
METHANOL PUMP		Flomore	2 Model 5203MS	P13742	P13738
ABOVE GROUND TANK		Westeel	15,000 Litre, Double Walled	63052247	
HIGH LEVEL SHUT DOWN		Wellmark	2" NPT, Model 7400	ST2TP	
HEATER		Scott Can	2 HA24X24 24,000 BTU, 12 VDC	12578	12585
SCRUBBER		R.J.V. Gas Field	6" x 24" Fuel Gas, 1200 PSI DESIGN PRESSURE		
PRESSURE	VESSEL	Bel Gas	1" NPT Type P627, 1/8" ORIFICE, 75-150 PSI SPRING RANGE		
REGULATOR VALVES	FUEL GAS	Mallard	3 1/4" Type 5601-T2, 0-60 PSI SPRING RANGE		
SKID		R.J.V. Gas Field	10'x21'-4" c/w 6"@8.2 CH IRON PERIPH. & 6"@15 TANK BEAMS		
BUILDING		R.J.V. Gas Field	10' x 16' x 10' -9'6" EAVE PANEL TYPE WHITE/WHITE		
MANUFACTURE DATE: May 19/05		TESTER: DAVE HAUCA		TANK: 500G	
TESTING DATE: May 19, 2005		SHIPPING DATE: June 9,2005		DELIVERY: First Pick	

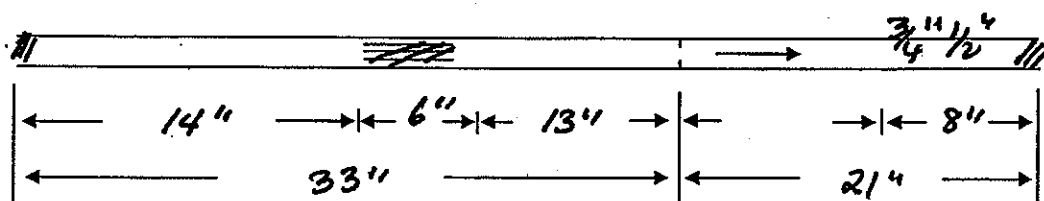
### Meter Tube Calibration Record

#### General Specifications

Customer:	R.J.V. Gas field services	Date:	JANUARY 19/ 2005
Location:		P.O. Number:	91412
Serial No.	EV05285	Work Order No.	H595
Assembly Part No.	40982-000-A0356	Part No.	40422-34221
Orifice Fitting:	2" 600# SCH. 80 SINGLE CHAMBER	Meter Tube Type No.	2
Straightening Vane		Yes	X No



Location	Upstream Meter Tube					Downstream Meter Tube					
	A	B	C	D	K	E	F	G	H	J	
V	1.934	1.939		1.939		1.938	1.940	1.944	1.932	1.934	
LV	1.934	1.934		1.939		1.939	1.939	1.934	1.939	1.936	
RV	1.935	1.939		1.939		1.939	1.940	1.942	1.929	1.944	
H	1.935	1.929		1.934		1.939	1.939	1.934	1.939	1.939	
Average	1.934	1.935		1.939		1.939	1.939	1.938	1.935	1.938	
Upstream Mean Average to Stamp on I.D. Plate	1.939					Downstream Mean Average to Stamp on I.D. Plate	1.939				



AGA/API Figure	3A	BETA	0.70	Meter Tap Location	Upstream: 1"	Downstream: 1"
----------------	----	------	------	--------------------	--------------	----------------

Remarks: 68°F

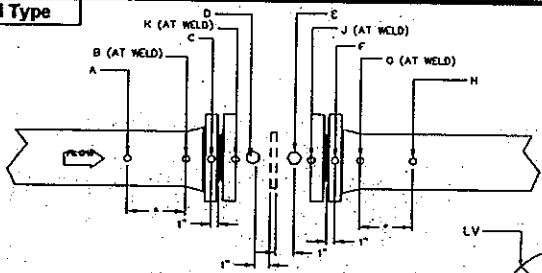
Inspector: V.P. Reddy

### Meter Tube Calibration Record

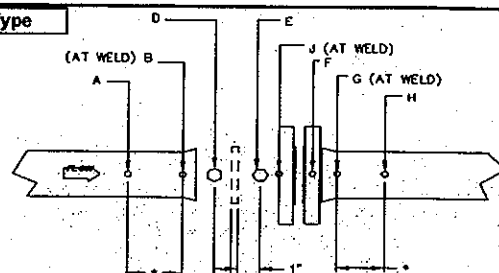
#### General Specifications

Customer:	R.J.U. Gas Field Services	Date:	JANUARY 19/ 2005
Location:		P.O. Number:	91418
Serial No.	EV05297	Work Order No.	H595
Assembly Part No.	40982-000-A0356	Part No.	40422-34221
Orifice Fitting:	2" 600# SCH. 80 SINGLE CHAMBER	Meter Tube Type No.	2
Straightening Vane		Yes	X No

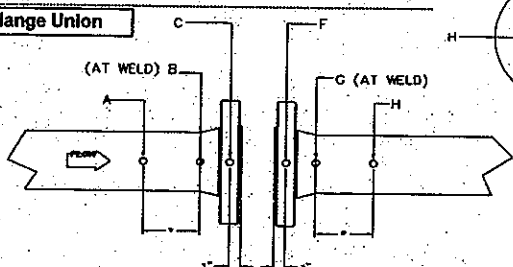
#### Type 1 Flanged Type



#### Type 2 Flangeweld Type



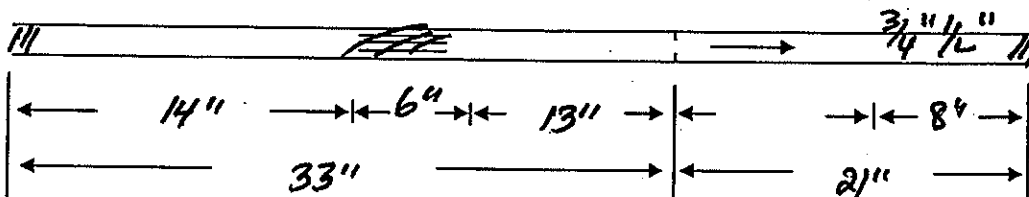
#### Type 3 Orifice Flange Union



**Type 4 weldneck Type Valve or Door**  
 Check Location Point A-B-D on Upstream Tube,  
 Point E-G-H on Downstream Tube

\*Cross section 'A' and 'H' shall be one pipe diameter  
 except if such Cross Section falls within the lifting or weld  
 It shall be made 1" inside the pipe

Location	Upstream Meter Tube					Downstream Meter Tube					
	A	B	C	D	K	E	F	G	H	J	
V	1.934	1.934		1.939		1.939	1.929	1.936	1.932	1.929	
LV	1.935	1.932		1.939		1.937	1.929	1.929	1.939	1.929	
RV	1.934	1.929		1.939		1.939	1.930	1.939	1.930	1.927	
H	1.935	1.929		1.939		1.939	1.930	1.929	1.934	1.927	
Average	1.934	1.931		1.939		1.939	1.929	1.933	1.933	1.928	
Upstream Mean Average to Stamp on I.D. Plate	1.939					Downstream Mean Average to Stamp on I.D. Plate	1.939				



AGA/API Figure	3A	BETA	0.70	Meter Tap Location	Upstream	1/4	Downstream	1"
Remarks:	68°F			Inspector:	V Reddy.			

W  
BT-2

CERTIFIED BY

**RJV**

**GAS FIELD  
SERVICES LTD**

VEGREVILLE, ALBERTA  
PHONE (403) 632-7774

**A529028**

UNIT NAME

Vert. 3 Phase Separator

C. R. NO.

P7217.2

SERIAL NO.

9338

M.A.W.P.

1480 p.s.i.  
10204 Kpa

HYDRO TEST

2220 p.s.i.  
15307 Kpa

DESIGN TEMP.

100 °F  
38 °C

CORR. ALLOW.

1.6 mm

HEAT TREATMENT

Nil

SIZE

406 x 2285 mm

SHELL MAT'L

SA-106-B

HEAD MAT'L

SA-516-70

WEIGHT

685 Kg

SHELL THICK.

21.44 mm

M. D. M. T.

-20 °F  
-29 °C

HEAD THICK.

20.63 mm

DATE MFG.

2005-04



1610 US Highway 259 N  
Kilgore, TX 75662  
(903) 984-8574 Fax: (903) 984-6307  
[www.hydroseal.com](http://www.hydroseal.com)

### SAFETY RELIEF VALVE TEST CERTIFICATION

Date: 12/19/2004  
Sales Order #: 26119  
Customer PO#: 7831  
Serial #: D19119

Customer: Dyna\_Flo Control Valves  
6803-71 St  
Edmonton, AB Canada T6B 2M5

**Hydroseal Valve Company, Inc.** 1400 Series pressure relief valves are manufactured and tested in accordance with the requirements of the ASME Boiler and Pressure Vessel Code, Section VIII. The relieving capacities have been certified by the National Board of Boiler and Pressure Vessel Inspectors. This valve is guaranteed to relieve within plus or minus 2 psi for pressures 70 psig or below and plus or minus 3% of set pressure for pressures above 70 psig, as allowed for in the provisions of ASME.

#### Valve Specifications:

Model #: 14E3M0V00/UO  
Inlet: 1 in  
Outlet: 1 in  
Orifice Area: 0.243 in<sup>2</sup>

Material Code:	0
Spring:	U0
Seat:	V
Cap:	O

#### Materials:

Body: Carbon Steel  
Guide: Stainless Steel  
Disc: Stainless Steel  
Seat: Fluorocarbon (Viton)

Spring: Stainless Steel  
Spring Range: 1379-1600  
Cap: Carbon Steel  
Cap Type: Closed Cap

#### Test Information:

CDT:	psig	0.00 Bar	0.00 Kg/cm <sup>2</sup>
Set Pressure:	1440.00 psig	99.28 Bar	101.24 Kg/cm <sup>2</sup>
Opening:	1441.00 psig	99.35 Bar	101.31 Kg/cm <sup>2</sup>
Closing:	1268.00 psig	87.43 Bar	89.15 Kg/cm <sup>2</sup>
Capacity (Air):	5656.20 scfm	Specific Gravity:	Temperature: amb °F
Capacity (Gas):	scfm		

Prepared By: Sharon R Cox  
Title: Technical Services

Signed: \_\_\_\_\_

Approved By: Clinton Wood  
Title: Operations Manager

Signed: \_\_\_\_\_

APR-06-2005 16:30 FROM:HYDROSEAL

9039846307

TD:17804694035

P.59'64



1610 US Highway 259 N  
Kilgore, TX 75662  
(903) 984-8574 Fax: (903) 984-6307  
[www.hydroseal.com](http://www.hydroseal.com)

### SAFETY RELIEF VALVE TEST CERTIFICATION

Date: 4/5/2005  
Sales Order #: 27719  
Customer PO#: 9088  
Serial #: 1186-121

Customer: Dyna-Flo Control Valve  
1911 66 Ave  
Edmonton, AL Canada T6P 1M5

*Hydroseal Valve Company, Inc.* 1400 Series pressure relief valves are manufactured and tested in accordance with the requirements of the ASME Boiler and Pressure Vessel Code, Section VIII. The relieving capacities have been certified by the National Board of Boiler and Pressure Vessel Inspectors. This valve is guaranteed to relieve within plus or minus 2 psi for pressures 70 psig or below and plus or minus 3% of set pressure for pressures above 70 psig, as allowed for in the provisions of ASME.

#### Valve Specifications:

Model #: 14E3M0V00/L5  
Inlet: 1 in  
Outlet: 1 in  
Orifice Area: 0.243 in<sup>2</sup>

Material Code:	0
Spring:	L5
Seat:	V
Cap:	O

#### Materials:

Body: Carbon Steel  
Guide: Stainless Steel  
Disc: Stainless Steel  
Seat: Fluorocarbon (Viton)

Spring: Stainless Steel  
Spring Range: 125-260  
Cap: Carbon Steel  
Cap Type: Closed Cap

#### Test Information:

CDT:	psig	0.00 Bar	0.00 Kg/cm <sup>2</sup>
Set Pressure:	150.00 psig	10.34 Bar	10.55 Kg/cm <sup>2</sup>
Opening:	150.20 psig	10.36 Bar	10.56 Kg/cm <sup>2</sup>
Closing:	128.80 psig	8.88 Bar	9.06 Kg/cm <sup>2</sup>
Capacity (Air):	635.78 scfm	Specific Gravity:	Temperature: amb °F
Capacity (Gas):	scfm		

Prepared By:  
Title: Technical Services

Signed: Clint Wood