

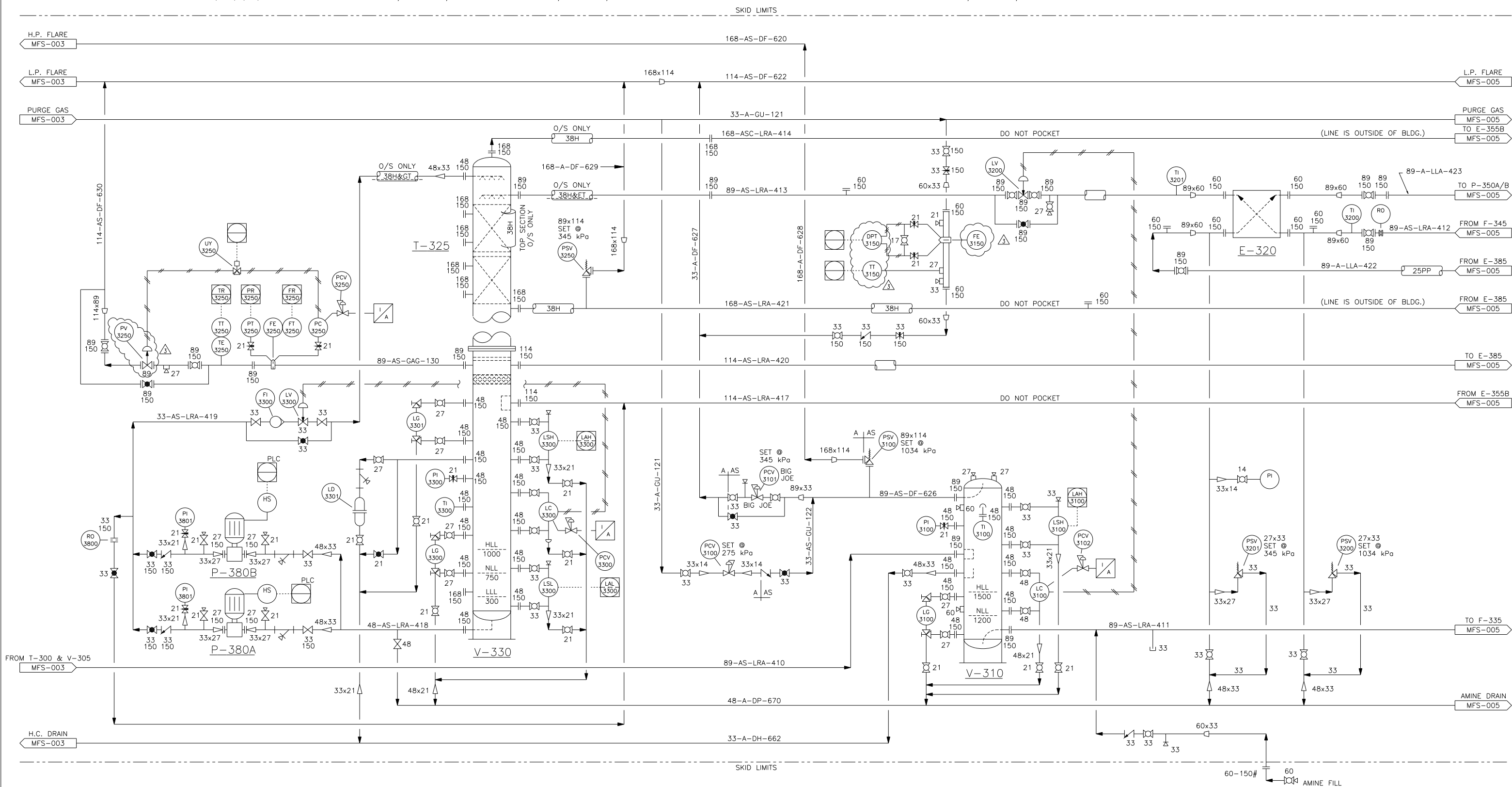
P-380A/B
REFLUX/MAKE-UP PUMPS
DEAN 3/4DL-316SS
18 L/MIN. @ 345 kPa
2 H.P./460/3/60/XP

T-325
STRIPPER
660mm O.D. x 17364mm S/S
DP: 345 kPa @ 149°C
C.A. 3.2mm/ FULL XRAY/ S.R.

V-330
REFLUX ACCUMULATOR
660mm O.D. x 3048mm S/S
DP: 345 kPa @ 149°C
C.A. 3.2mm/ FULL XRAY/ S.R.

V-310
AMINE FLASH TANK
762mm O.D. x 2134mm S/S
DP: 1034 kPa @ -29/93°C
C.A. 3.2mm/ FULL XRAY/ S.R.

E-320
LEAN/RICH AMINE
EXCHANGER
c/w 73 316 S.S. PLATES
D.P.: 1379 kPa @ 135°C



DRAWING NO.	REFERENCE DRAWINGS	REV.	REVISION DESCRIPTION	BY	DATE	CHKD	APP	AMOCO APP	ENGINEER'S STAMP	ENGINEERING RECORD	Amoco Canada Petroleum Company Ltd.	
D-MFS-94160-100	PROPAG VENDOR DRAWING	3	REVISED AS PER MAXIMO SCE PROJECT-PER MOC NO.2004-42	WD	2006-04-17	GD		PT		DRAWN BY R. LANGSTAFF	DATE 94.12.04	CALGARY ALBERTA
		2	AS-BUILT AS PER PLANT MARK-UPS (S.E.A.L. INTERNATIONAL)	VIC J	00-06-16	HM				CHKD BY		AREA/PROJECT BOTHA COMPRESSOR STATION
		1	REVISED AS NOTED	MR	95-03-10					ENGINEER		PREPARED BY Gemini Engineering Ltd.
		0	ISSUED FOR CONSTRUCTION	RKL	95-02-13							PROJECT MANAGEMENT-DESIGN CALGARY, ALBERTA
		D	ISSUED FOR APPROVAL OF AMINE UNIT INSTALLATION	RKL	95-01-26							TITLE BOTHA COMPRESSOR STATION AMINE PROCESSING UNIT MECHANICAL FLOWSHEET
		C	ISSUED FOR INFORMATION ONLY	C.H.	94-08-19							
		B	ISSUED FOR BID	C.S.	94-06-09					AMOCO APP.		
		A	ISSUED FOR CLIENT APPROVAL	K.M.	94-06-01							SCALE N.T.S.
										CONTR. DWG. NO. G93-128-MFS-004		REV. 3
										AMOCO DWG. NO. D-BOT-220-05		