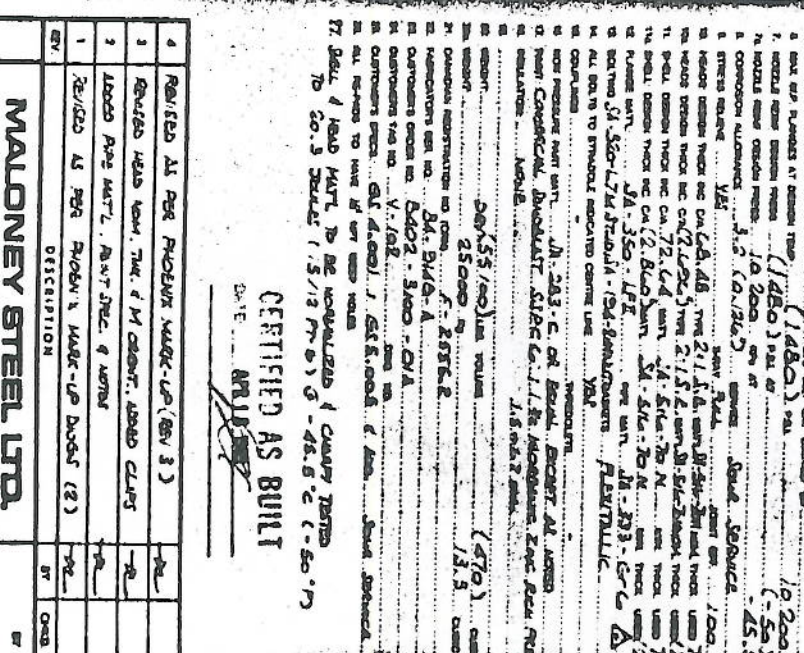
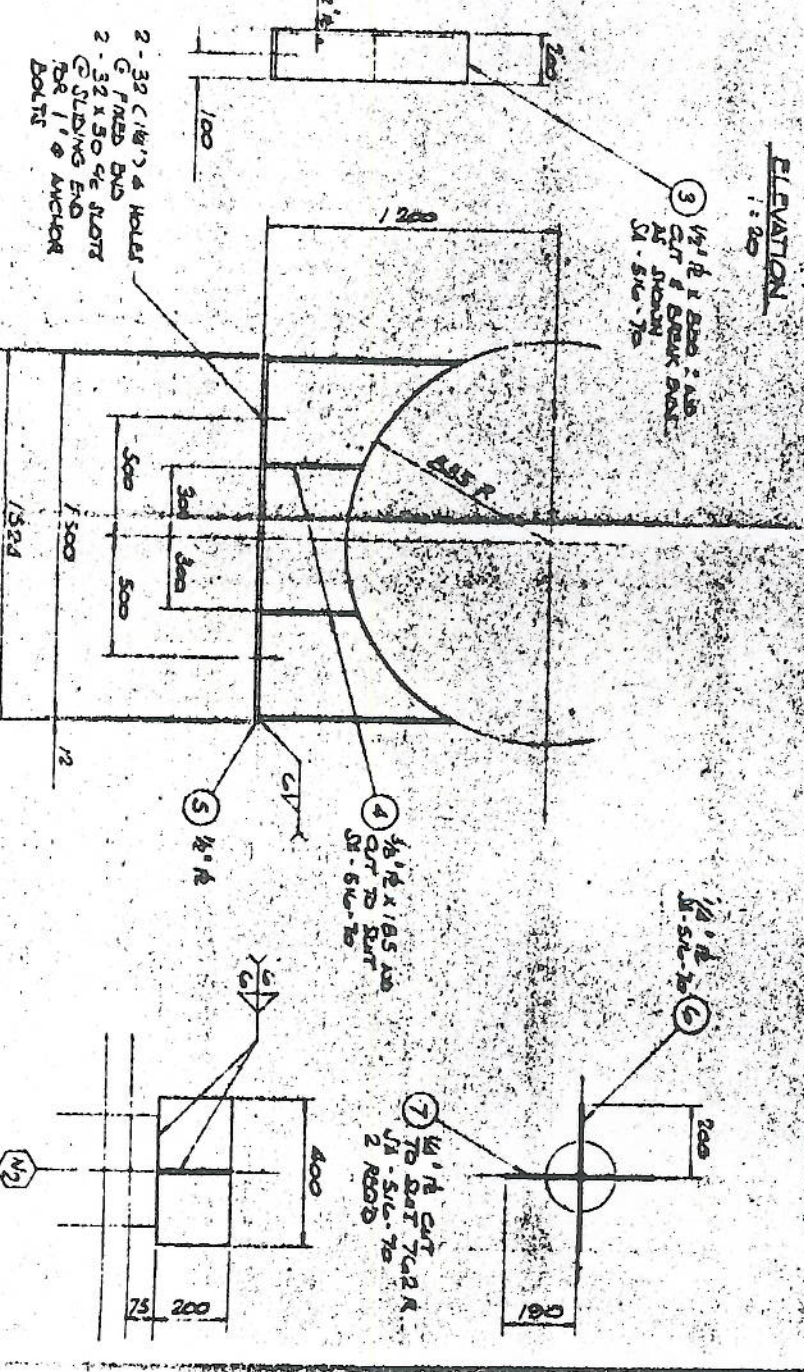
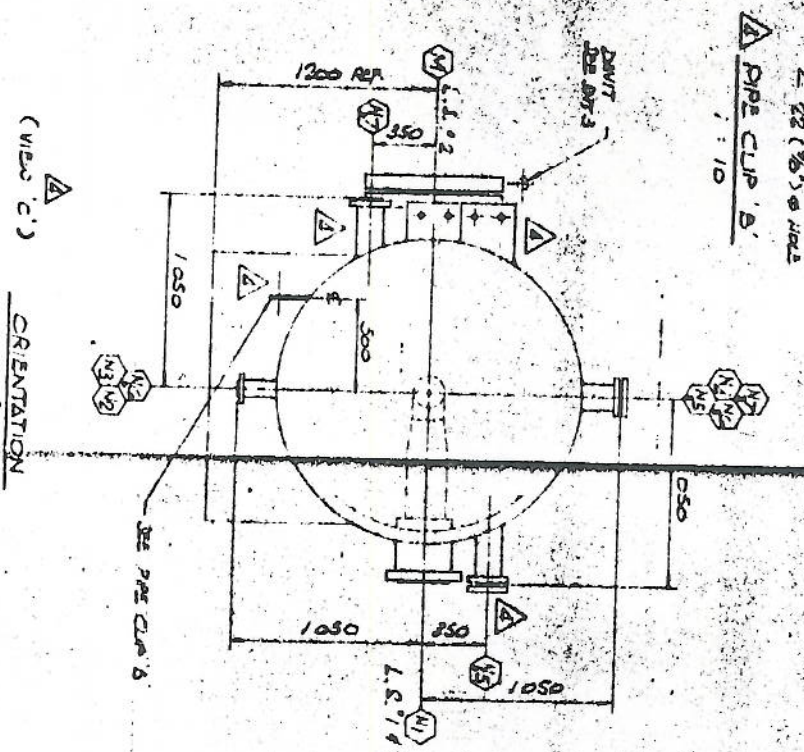
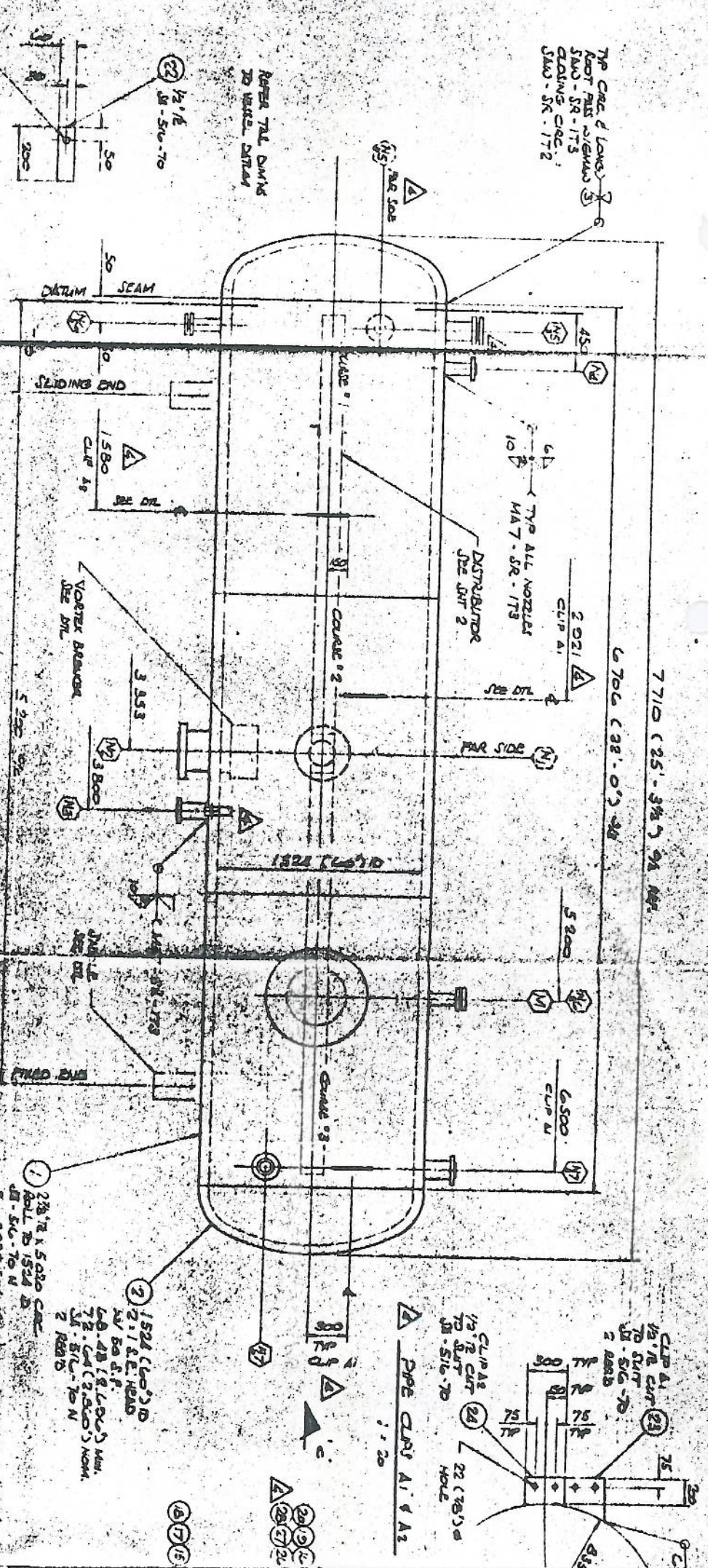
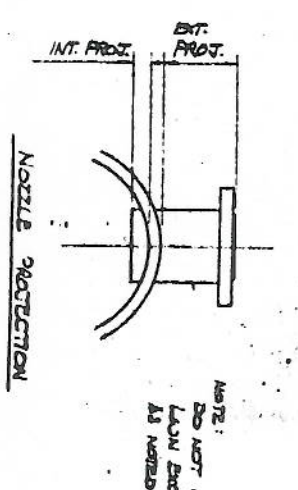


TOP CASE & LOWER  
FOOT CASE ASSEMBLY  
3100 - SR - 173  
CLOSING CIRC.  
3100 - SR - 172

REFER T&E DRAWING  
TO WATER SYSTEM



NO.	DESCRIPTION	QTY	UNIT	REMARKS
1	CONSTRUCTION	1	NO.	1.00
2	STEEL PLATE	10.200	SQ. FT.	1/2" THICK
3	STEEL PLATE	37.7	SQ. FT.	3/8" THICK
4	STEEL PLATE	0.20	SQ. FT.	1/4" THICK
5	STEEL PLATE	10.200	SQ. FT.	1/2" THICK
6	STEEL PLATE	10.200	SQ. FT.	1/2" THICK
7	STEEL PLATE	10.200	SQ. FT.	1/2" THICK
8	STEEL PLATE	10.200	SQ. FT.	1/2" THICK
9	STEEL PLATE	10.200	SQ. FT.	1/2" THICK
10	STEEL PLATE	10.200	SQ. FT.	1/2" THICK
11	STEEL PLATE	10.200	SQ. FT.	1/2" THICK
12	STEEL PLATE	10.200	SQ. FT.	1/2" THICK
13	STEEL PLATE	10.200	SQ. FT.	1/2" THICK
14	STEEL PLATE	10.200	SQ. FT.	1/2" THICK
15	STEEL PLATE	10.200	SQ. FT.	1/2" THICK
16	STEEL PLATE	10.200	SQ. FT.	1/2" THICK
17	STEEL PLATE	10.200	SQ. FT.	1/2" THICK
18	STEEL PLATE	10.200	SQ. FT.	1/2" THICK
19	STEEL PLATE	10.200	SQ. FT.	1/2" THICK
20	STEEL PLATE	10.200	SQ. FT.	1/2" THICK
21	STEEL PLATE	10.200	SQ. FT.	1/2" THICK
22	STEEL PLATE	10.200	SQ. FT.	1/2" THICK
23	STEEL PLATE	10.200	SQ. FT.	1/2" THICK
24	STEEL PLATE	10.200	SQ. FT.	1/2" THICK
25	STEEL PLATE	10.200	SQ. FT.	1/2" THICK
26	STEEL PLATE	10.200	SQ. FT.	1/2" THICK
27	STEEL PLATE	10.200	SQ. FT.	1/2" THICK
28	STEEL PLATE	10.200	SQ. FT.	1/2" THICK
29	STEEL PLATE	10.200	SQ. FT.	1/2" THICK
30	STEEL PLATE	10.200	SQ. FT.	1/2" THICK
31	STEEL PLATE	10.200	SQ. FT.	1/2" THICK
32	STEEL PLATE	10.200	SQ. FT.	1/2" THICK
33	STEEL PLATE	10.200	SQ. FT.	1/2" THICK
34	STEEL PLATE	10.200	SQ. FT.	1/2" THICK
35	STEEL PLATE	10.200	SQ. FT.	1/2" THICK
36	STEEL PLATE	10.200	SQ. FT.	1/2" THICK
37	STEEL PLATE	10.200	SQ. FT.	1/2" THICK
38	STEEL PLATE	10.200	SQ. FT.	1/2" THICK
39	STEEL PLATE	10.200	SQ. FT.	1/2" THICK
40	STEEL PLATE	10.200	SQ. FT.	1/2" THICK
41	STEEL PLATE	10.200	SQ. FT.	1/2" THICK
42	STEEL PLATE	10.200	SQ. FT.	1/2" THICK
43	STEEL PLATE	10.200	SQ. FT.	1/2" THICK
44	STEEL PLATE	10.200	SQ. FT.	1/2" THICK
45	STEEL PLATE	10.200	SQ. FT.	1/2" THICK
46	STEEL PLATE	10.200	SQ. FT.	1/2" THICK
47	STEEL PLATE	10.200	SQ. FT.	1/2" THICK
48	STEEL PLATE	10.200	SQ. FT.	1/2" THICK
49	STEEL PLATE	10.200	SQ. FT.	1/2" THICK
50	STEEL PLATE	10.200	SQ. FT.	1/2" THICK
51	STEEL PLATE	10.200	SQ. FT.	1/2" THICK
52	STEEL PLATE	10.200	SQ. FT.	1/2" THICK
53	STEEL PLATE	10.200	SQ. FT.	1/2" THICK
54	STEEL PLATE	10.200	SQ. FT.	1/2" THICK
55	STEEL PLATE	10.200	SQ. FT.	1/2" THICK
56	STEEL PLATE	10.200	SQ. FT.	1/2" THICK
57	STEEL PLATE	10.200	SQ. FT.	1/2" THICK
58	STEEL PLATE	10.200	SQ. FT.	1/2" THICK
59	STEEL PLATE	10.200	SQ. FT.	1/2" THICK
60	STEEL PLATE	10.200	SQ. FT.	1/2" THICK
61	STEEL PLATE	10.200	SQ. FT.	1/2" THICK
62	STEEL PLATE	10.200	SQ. FT.	1/2" THICK
63	STEEL PLATE	10.200	SQ. FT.	1/2" THICK
64	STEEL PLATE	10.200	SQ. FT.	1/2" THICK
65	STEEL PLATE	10.200	SQ. FT.	1/2" THICK
66	STEEL PLATE	10.200	SQ. FT.	1/2" THICK
67	STEEL PLATE	10.200	SQ. FT.	1/2" THICK
68	STEEL PLATE	10.200	SQ. FT.	1/2" THICK
69	STEEL PLATE	10.200	SQ. FT.	1/2" THICK
70	STEEL PLATE	10.200	SQ. FT.	1/2" THICK
71	STEEL PLATE	10.200	SQ. FT.	1/2" THICK
72	STEEL PLATE	10.200	SQ. FT.	1/2" THICK
73	STEEL PLATE	10.200	SQ. FT.	1/2" THICK
74	STEEL PLATE	10.200	SQ. FT.	1/2" THICK
75	STEEL PLATE	10.200	SQ. FT.	1/2" THICK
76	STEEL PLATE	10.200	SQ. FT.	1/2" THICK
77	STEEL PLATE	10.200	SQ. FT.	1/2" THICK
78	STEEL PLATE	10.200	SQ. FT.	1/2" THICK
79	STEEL PLATE	10.200	SQ. FT.	1/2" THICK
80	STEEL PLATE	10.200	SQ. FT.	1/2" THICK
81	STEEL PLATE	10.200	SQ. FT.	1/2" THICK
82	STEEL PLATE	10.200	SQ. FT.	1/2" THICK
83	STEEL PLATE	10.200	SQ. FT.	1/2" THICK
84	STEEL PLATE	10.200	SQ. FT.	1/2" THICK
85	STEEL PLATE	10.200	SQ. FT.	1/2" THICK
86	STEEL PLATE	10.200	SQ. FT.	1/2" THICK
87	STEEL PLATE	10.200	SQ. FT.	1/2" THICK
88	STEEL PLATE	10.200	SQ. FT.	1/2" THICK
89	STEEL PLATE	10.200	SQ. FT.	1/2" THICK
90	STEEL PLATE	10.200	SQ. FT.	1/2" THICK
91	STEEL PLATE	10.200	SQ. FT.	1/2" THICK
92	STEEL PLATE	10.200	SQ. FT.	1/2" THICK
93	STEEL PLATE	10.200	SQ. FT.	1/2" THICK
94	STEEL PLATE	10.200	SQ. FT.	1/2" THICK
95	STEEL PLATE	10.200	SQ. FT.	1/2" THICK
96	STEEL PLATE	10.200	SQ. FT.	1/2" THICK
97	STEEL PLATE	10.200	SQ. FT.	1/2" THICK
98	STEEL PLATE	10.200	SQ. FT.	1/2" THICK
99	STEEL PLATE	10.200	SQ. FT.	1/2" THICK
100	STEEL PLATE	10.200	SQ. FT.	1/2" THICK



CERTIFIED AS BUILT  
DATE: APR 1978  
BY: [Signature]

**MALONEY STEEL LTD.**  
2075 Sheppard Rd. S.E., Calgary, Alberta, Canada

**INLET SURGE TANK V-102**  
1524 (60) X C706 (22) (0) X  
CUSTOMER: HOME OIL CO. LTD.  
576 ROBSON ST. CALGARY, ALBERTA, CANADA  
FOR GRANVILLE HILLS MISCELLANEOUS FLOOD PROTECT