

**Collicutt Energy Services Ltd**  
 CORPORATE OFFICE  
 7580 EDGAR INDUSTRIAL DRIVE  
 RED DEER, AB CANADA T4P 3K2  
 PHONE (403) 358-3400  
 FAX (403) 358-3210

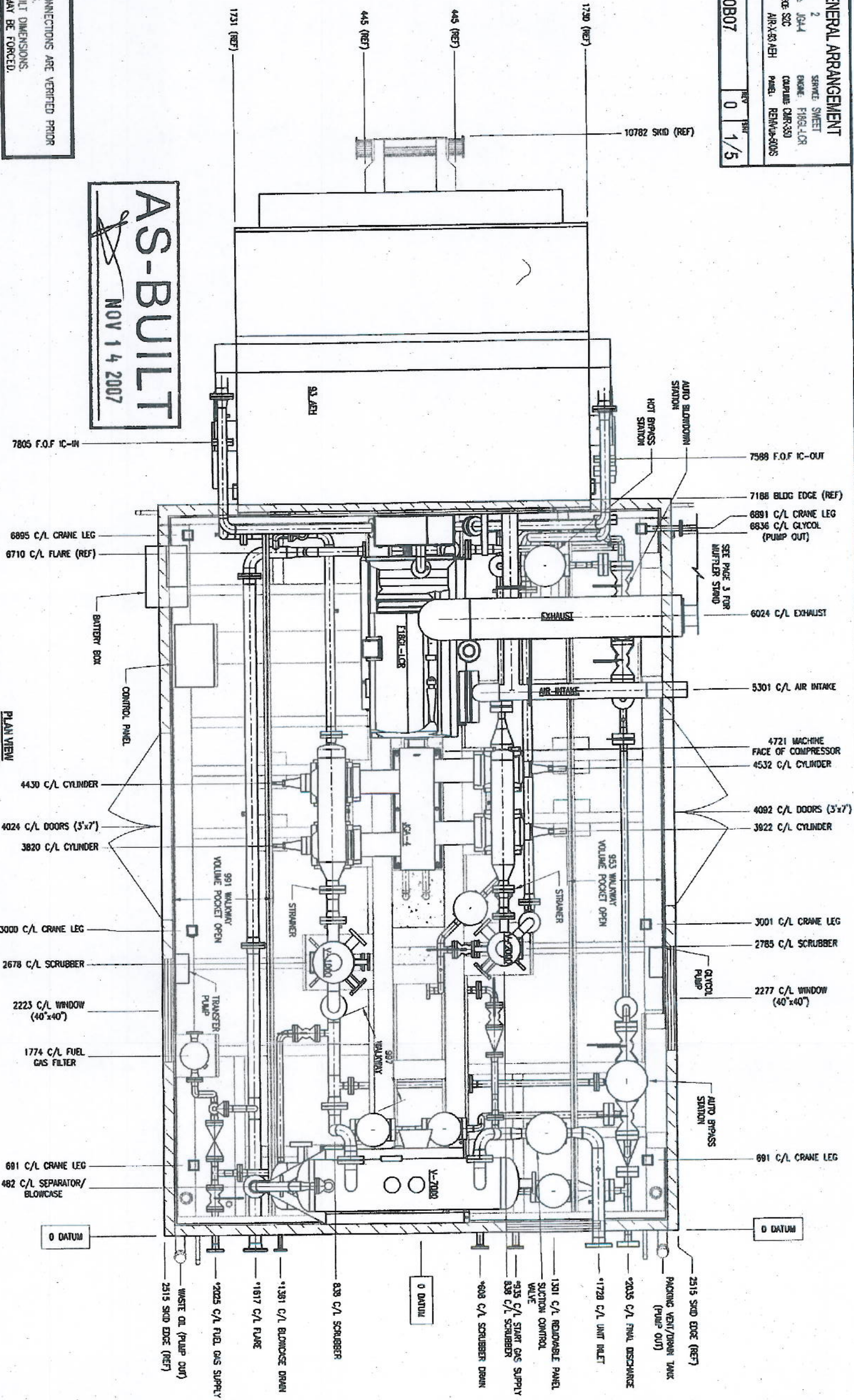
**GENERAL ARRANGEMENT**  
 STAGE: 2  
 COMPRESSOR: JCH4  
 DISTANCE PROJ: SOC  
 OWNER: AIR-X-33/NEH  
 JOB: FHS87

ENGINE: FHS87-LOR  
 COMP: CAR-330  
 PANEL: REMAN-330S

11180B07 0 1/5

**AS-BUILT NOTES:**  
 1. AS-BUILT CUSTOMER CONNECTIONS ARE VERIFIED PRIOR TO THE PACKAGE SHIPPING.  
 2. \* \* \* INDICATES AS-BUILT DIMENSIONS.  
 3. AS-BUILT DIMENSIONS MAY BE FORCED.

**AS-BUILT**  
 NOV 14 2007



DRAWING NO	REFERENCE DRAWINGS	REV	MOC NO.	REVISION DESCRIPTION	BY	DATE	CHKD	APRD	BR APPD	ENGR'S STAMP	ENGINEERING RECORD	CALCULATED	PREPARED BY	SCALE	DATE	REV
11180B07	UTILITY PAID	D	MOC NO. 2007-XXXX, AS BUILT		R. VALUCHAN	2007-11-14			M. ABOLGUSH		DATE: 2007-05-31 DRAWN BY: R. VALUCHAN CHKD BY:	AREA/PROJECT: TBA	TBA	AS NOTED	2007-07-12	
11187A07	PROCESS PAID										DATE: 2007-05-31 ENGINEER: M. SOPKOW					

**BP Canada Energy Company**  
 TBA WELL SITE  
 GENERAL ARRANGEMENT

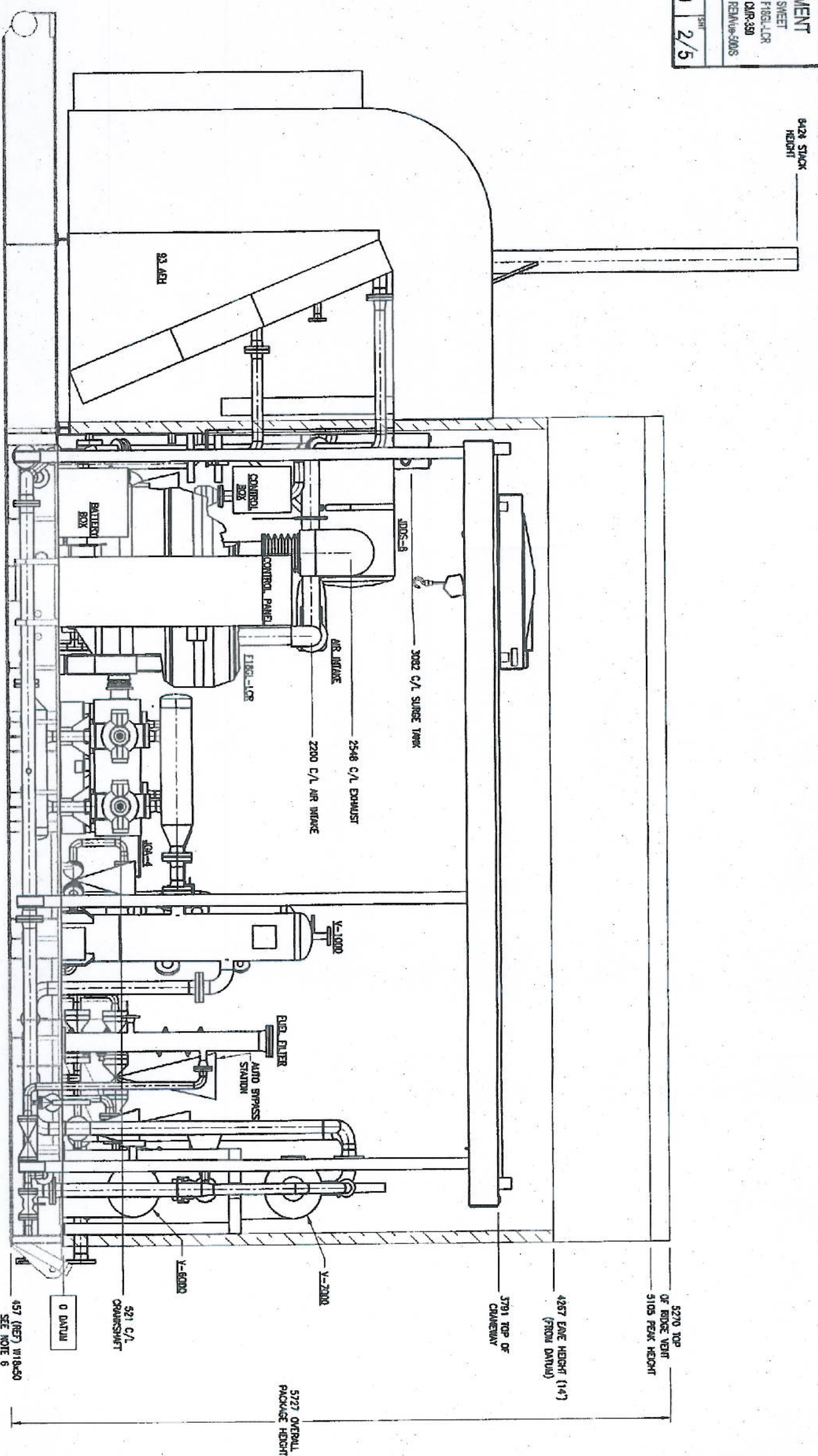
11180B07



**Collicutt Energy Services Ltd.**  
 CORPORATE OFFICE  
 7590 EDGAR INDUSTRIAL DRIVE  
 RED DEER, AB CANADA T4P 3R2  
 PHONE (403) 366-3200  
 FAX (403) 366-3210

**GENERAL ARRANGEMENT**  
 STAGES: 2  
 COMPRESSOR: JG44  
 DISTANCE FROM SSC: 1000L  
 CONTROL: AIR-4-53/4EH  
 SERVICE SWEET: FB81-LOR  
 ENGINE: FB81-LOR  
 COMPULSION: CARR-350  
 PANEL: REMANU-500S

11180B07 REV 0 2/5



ELEVATION VIEW  
 SCALE 1:40  
 WASTE OIL TANKS ARE REMOVED IN THIS VIEW FOR CLARITY

**AS-BUILT**  
 NOV 14 2007

- GENERAL NOTES:**
- UNLESS OTHERWISE SPECIFIED
  - ALL DIMENSIONS ARE IN mm
  - ALL WEIGHTS ARE IN kg
  - FABRICATE BELT GUARD AS REQUIRED (NOT SHOWN)
  - ALL PIPING TO BE IN ACCORDANCE WITH THE LATEST EDITION OF ASME B31.3 PRESSURE PIPING CODE.
  - UNLESS OTHERWISE SPECIFIED ALL PROCESS PIPING HOLES TO STRADDLE CENTERLINES
  - UNLESS OTHERWISE SPECIFIED PIPE SHALL BE IN ACCORDANCE WITH ASTM A-106 GR.B.
  - ALL FULL DEPTH STRUCTURAL SKID MEMBERS (STACKED HSS TANKS AND BEAM) OVERALL DEPTHS WILL DIFFER
  - SKID FABRICATED WITH STRUCTURAL MEMBERS FLUSH ON TOP
  - THE AREA AROUND STRAINERS TO BE CLEAR OF UTILITY PIPING FOR EASY REMOVAL

DRAWING NO	REFERENCE DRAWINGS	REV	LOC NO.	REVISION DESCRIPTION	BY	DATE	CHNO	APPR	BP APPR	ENGINEER'S STAMP	ENGINEERING RECORDED	CAD/PROJECT	TITLE	SCALE	REV
11180A07	UTILITY PAID	0	MCC NO. 2007-XXXX	AS BUILT	R. VAUGHAN	2007-11-14			M. ABOUCOUSH			2007-05-31	BP Canada Energy Company TBA WELLSITE GENERAL ARRANGEMENT	AS NOTED	D
11187A07	PROCESS PAID											2007-05-31			











**Energy Services Ltd.**  
 CORPORATE OFFICE  
 7500 EDGAR INDUSTRIAL DRIVE  
 RED DEER, AB CANADA T4P 3K2  
 PHONE (403) 358-3200  
 FAX (403) 358-3210

**PROCESS PAID**  
 STAGES: 2  
 SERVICE: SHEET  
 ENGINE: FIBERGLOR  
 DISTANCE FROM: 304  
 COORDINATE: CHIR 330  
 DRAWN: AIR-K88 AEH  
 PAINT: REPAIRS-SUPPLIES  
 SHEET NO: 11187A07  
 REV: 0  
 DATE: 2/2

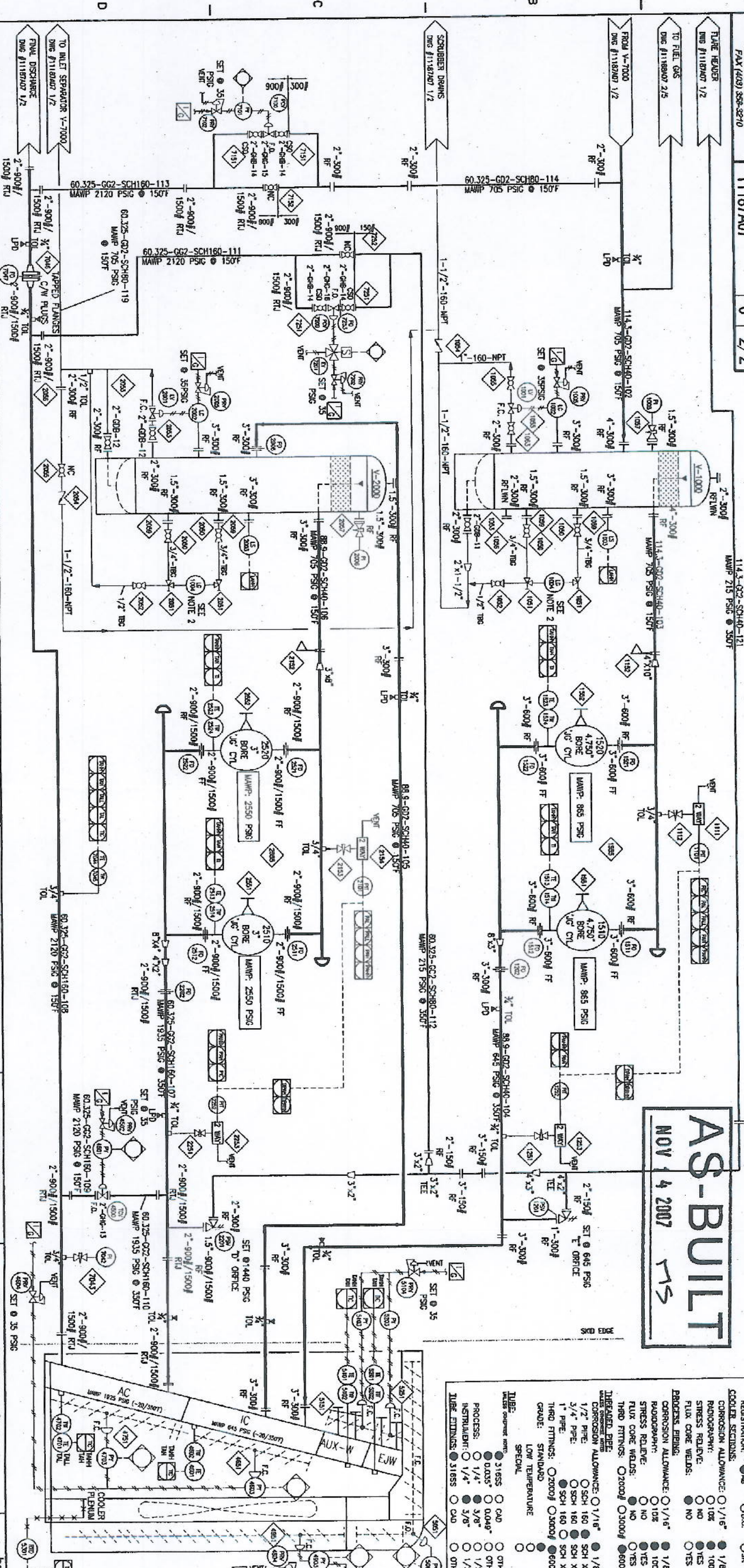
**V-1000**  
 SUCTION  
 SCRUBBER  
 16" OD x 60' S/S  
 710 PSIG MAMP @ 150°F  
 S/N: V1000-07-0013  
 CRN: U2090.2

**V-2000**  
 INTERSTAGE  
 SCRUBBER  
 12.75" OD x 60' S/S  
 705 PSIG MAMP @ 150°F  
 S/N: V2000-07-0009  
 CRN: R5965.2

**AS-BUILT**  
 NOV 4 2007

**NOTES:**  
 1. 3/4" TAG TO BE 150mm (6000) WALL THICKNESS  
 2. ALL GASKETS TO BE SUPERHEATED REBUILT, AND  
 3. ALL GASKETS TO BE 316SS  
 4. ALL VENTS SHALL VENT TO ATMOSPHERE OUTSIDE BUILDING WALL

**DESIGN DATA**  
 ALL PIPING DESIGN IN ACCORDANCE WITH B31.3  
 ALL STUDS TO BE 87M WITH 2MM NUTS  
 ALL RF GASKETS TO BE GRAF-HILL 316SS  
 ALL RTJ GASKETS TO BE 316SS OVAL RING  
 VESSELS  
 CORROSION ALLOWANCE: 1/16" 1/8"  
 RADIOGRAPHY: 100% 100%  
 STRESS RELIEVE: YES YES  
 STRESS WELDING: YES YES  
 FLUX CORE WELDS: YES YES  
 THIRD FITTINGS: 20000/30000/60000  
 REGISTRATION: 08 08C 08K  
 COOLER SECTIONS  
 CORROSION ALLOWANCE: 1/16" 1/8"  
 RADIOGRAPHY: 100% 100%  
 STRESS RELIEVE: YES YES  
 FLUX CORE WELDS: YES YES  
 PROCESS BIRDS  
 CORROSION ALLOWANCE: 1/16" 1/8"  
 RADIOGRAPHY: 100% 100%  
 STRESS RELIEVE: YES YES  
 FLUX CORE WELDS: YES YES  
 THIRD FITTINGS: 20000/30000/60000



REVISION NO.	DATE	BY	CHKD	APPD	DESCRIPTION
0	2007-05-31	MARK SOPKOW	MARK SOPKOW	MARK SOPKOW	ISSUED FOR CONSTRUCTION
1	2007-05-31	MARK SOPKOW	MARK SOPKOW	MARK SOPKOW	ISSUED FOR CONSTRUCTION
2	2007-07-12	MARK SOPKOW	MARK SOPKOW	MARK SOPKOW	ISSUED FOR CONSTRUCTION

DESIGNED BY	DATE	CHKD BY	APPD
MARK SOPKOW	2007-05-31	MARK SOPKOW	MARK SOPKOW
DESIGNED BY	DATE	CHKD BY	APPD
MARK SOPKOW	2007-05-31	MARK SOPKOW	MARK SOPKOW

PROJECT NO.	11187A07
PROJECT NAME	TBA WELL SITE
PROJECT LOCATION	ALBERTA
PROJECT TYPE	PIPING & INSTRUMENTATION DIAGRAM
PROJECT NO.	11187A07
PROJECT NAME	TBA WELL SITE
PROJECT LOCATION	ALBERTA
PROJECT TYPE	PIPING & INSTRUMENTATION DIAGRAM