



#1890

60" ID x 20' 720psi Sour Separator

FOR IMMEDIATE SALE



This separator package, sitting in southern Alberta, is a simple, high quality, straightforward design without a bunch of silly redundancy, or over the top options that you don't want to pay for. It is dressed 2 phase; the current configuration has both the panic and water dump flowing through 2 x 2" lines via ANSI style centrifugal pumps, or with the flip of a couple valves bypassing the pumps and utilizing dump valves only. There is no inlet controller, BPCV, or meter run - however, drop out spools are included for each and we can get you connected with new or surplus/recon options for each of these. Prior to redeployment you may need to add in a 3rd phase or apply for a SK/BC registration; both options are quickly and easily handled by us or your shop/field crew of choice. Whatever way you need it setup and configured, we can make these mods quickly and efficiently - far better than building new from a time and cost perspective. Tell us about your application and let us prepare a scope of supply to have this into your hands in as little as 2-3 weeks.

FOR IMMEDIATE SALE

#1890

60" ID x 20' 720psi Sour Separator

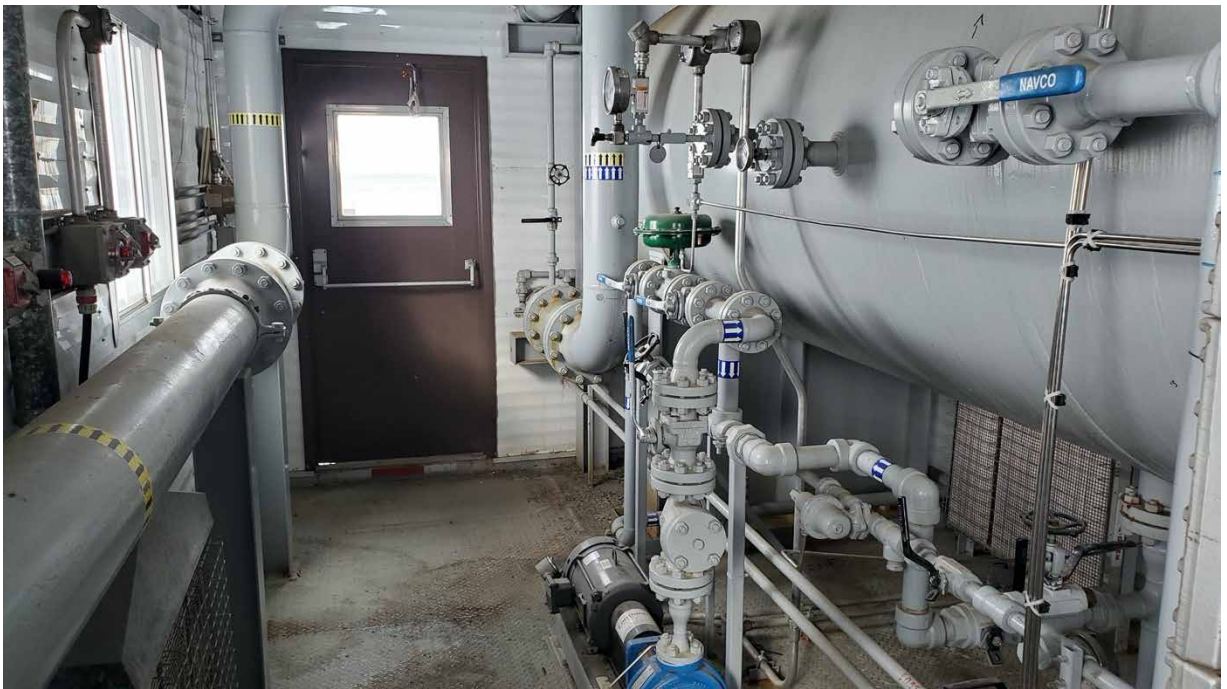


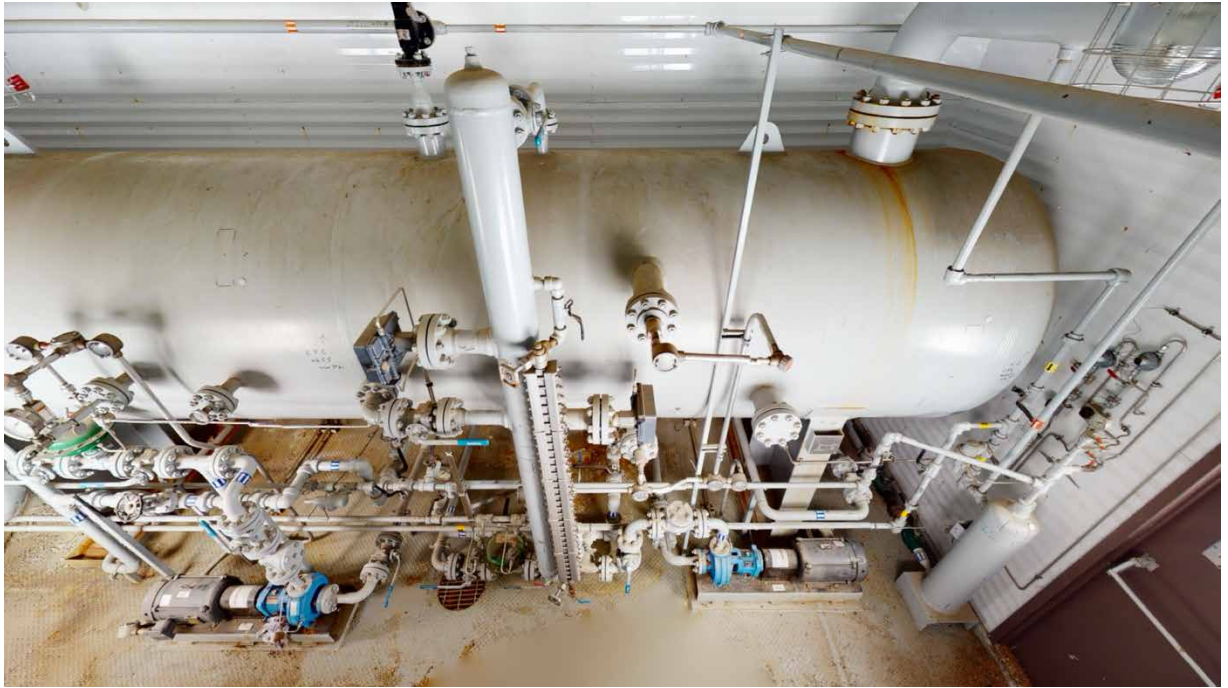
Condition	Used
Manufactured	Paintearth 2007
Location	Central AB
Status	Connected; 1 week for disconnection
Registration	AB (BC/SK available)
Service	Sour
Phases	3 Phase, Dressed 2
Vessel Connections	8" Inlet & Outlet; 3" Liquid & Oil Outlet; 3" PSV's
Meter Run	No Meter; Drop out spool piece included
Electrical	ESD Button, LEL Detection, 3 x Interior Lights, 2 x Exterior lights, 1 Exhaust Fan, 4 Catadyne heaters w/ Indicators and 120V Start, and 2 x 5HP electric motors for pumps wired to Junction Box
Building Dimensions	12' width x 24' length x 10'6" eave height
Building	Two (2) Single Man Doors with Windows IWG; Two (2) 36" Windows w/ Screens; Two (2) 12" x 12" Adjustable Louvers; 3" Drip Lip around skid perimeter interior, Fuel Gas Scrubber, Floor drain piped to skid edge 2" connection



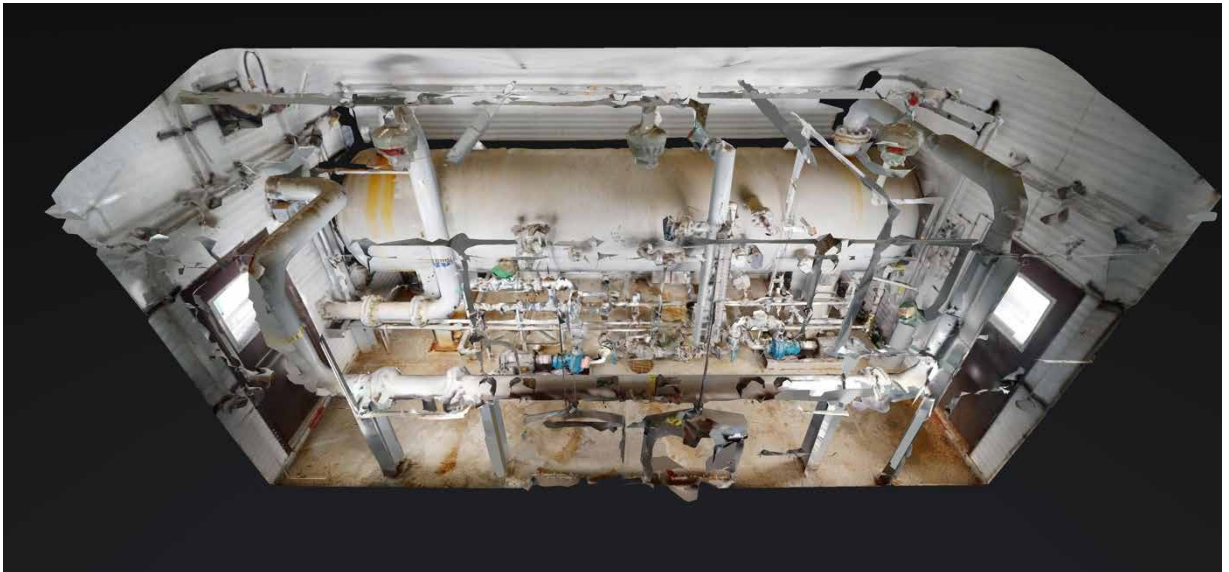
Take a 3D walkthrough at <https://bit.ly/33Zp8xH>







The Goulds pumps were incorporated to help in low pressure applications. The piping is designed so you can either flow through the centrifugal pumps or bypass them completely with no piping changes required.



Take a 3D walkthrough at <https://bit.ly/33Zp8xH>