

A dark, grayscale photograph of an industrial building. In the foreground, there is a metal staircase with a handrail leading up to a platform. To the right of the stairs, there is a large, complex piece of machinery, likely the compressor mentioned in the text. The building has a corrugated metal roof with several skylights. A tall chimney stack is visible in the background. The overall scene is dimly lit, creating a somber and industrial atmosphere.

#1896

1450hp Sour 3 Stage Reciprocating Compressor

FOR IMMEDIATE SALE



This unit is located on the same site as a really nice 72" x 300# Sour 3 Phase Separator (also for quick sale) and is located just north of Calgary. Built in 2009 by Propak, this unit has just under 65,000 total hours on it. Designed for 1650psig MAWP full sour operation and, as the pictures show, possibly excessive amounts of noise attenuation which is included in the price, but this feature doesn't have to be taken if you don't require it. Obviously, sour compressors of this size are rare on the surplus market and in this case, there is no possible way that anyone should buy new if this unit will fit the application – price and delivery can't be beat. Call us for a custom performance sizing or to get pricing on moving, cylinder/vessel mods, overhaul comments etc.

FOR IMMEDIATE SALE

#1896

1450hp Sour Reciprocating Compressor



Condition	Field Ready &/or Minor Repair
Manufactured	Propak 2009
Location	Airdrie, AB
Registration	AB Only (some vessels have .123 and all are eligible for re-registration by us)
Status / Availability	Connected; 2 weeks for Joint Venture partner approval.
Service	Sour
Driver / Driven	1450 hp @ 1200 rpm Waukesha 5794LT ESM; Ariel JGK/4-3
Stages	3
Cylinders & MAWP	1st stage 2x 14.125" @ 635psi; 2nd stage 9.625" @ 1900psi; 3rd stage 6.250" @ 2050psi
Package MAWP	1650psi
Control Panel	Allen-Bradley Panel View 1000 HMI
Additional Notes:	10" 300# inlet/3" 900# outlet. purge packing & seal pot drain. Crankcase vented outside. Auto/Manual blowdown and recycle, Multiple diaphragm pumps for oil/glycol. Sound attenuation on interior walls, cooler and all exhaust fans. 2 ton crane. Fully Wired to JB's c/w lights, exhaust fans, gas detection, ESD's, 2 x fire-eyes, AC catadyne heat.



Take a 3D walkthrough at <https://bit.ly/3aOSbWw>

Sample Performance

For information only, subject to engineering review.

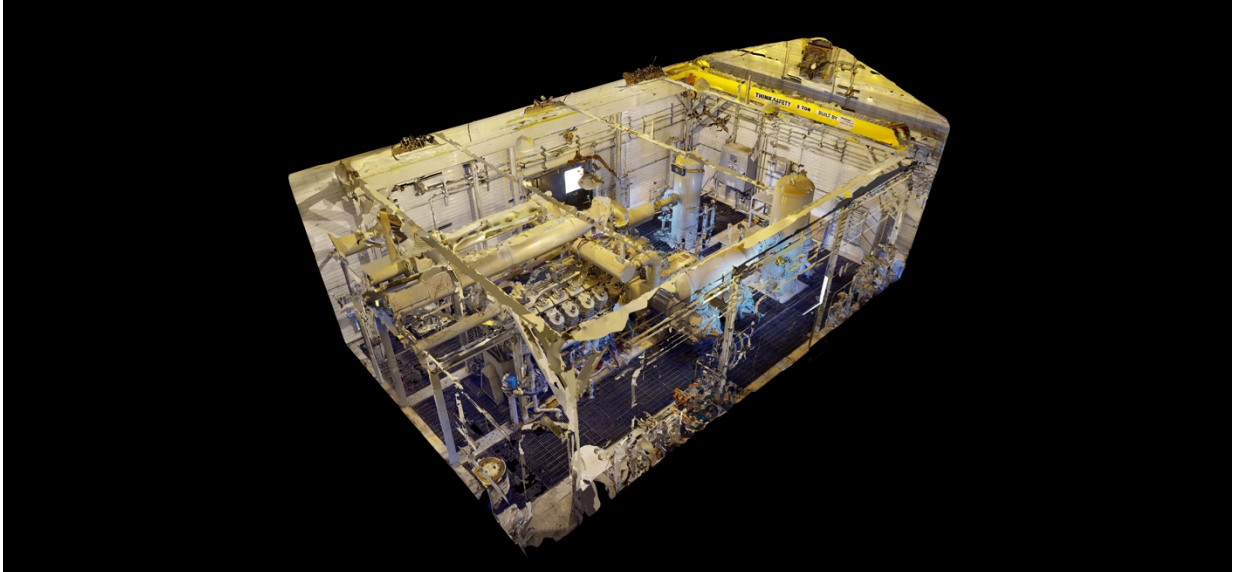
AS CONFIGURED 3 STAGE

Suction Pressure: 60psi	Discharge Pressure: 1000psi	7.95MMSCFD @ 1352 HP
Suction Pressure: 45psi	Discharge Pressure: 1500psi	6.42MMSCFD @ 1347 HP
Suction Pressure: 65psi	Discharge Pressure: 1525psi	6.73MMSCFD @ 1312 HP









Take a 3D walkthrough at <https://bit.ly/3aOSbWw>

