



CJV#1853

800 Amp MCC With Full PLC

CJV#1853

800 AMP MCC With Full PLC



Electrical Equipment Includes:

- Qty. 1 800 AMP, 480 VAC, Model 6 Square D MCC Cabinet w/
- Qty. 1 Main 800 AMP Breaker
- Qty. 2 200 AMP breakers for main pumps
- Qty. 2 50 AMP breakers for the air compressor motors (these can be used for charge pumps)
- Qty. 2 25 AMP breakers for building heaters
- Qty. 3 Breakers for CCT panel, yard light contactor panel and
- Qty. 2 Toshiba 100 HP VFD assemblies for main pumps
- Qty. 1 PLC Control panel with Allen Bradley PLC and I250 Panel View HMI
- Qty. 1 Hayley SUPERTROL UPS, 120 VAC/24 VDC
- Qty. 1 Hamond 45 kVA - 208/120/3/60 VAC transformer
- Qty. 2 Light Beacon

Self-frame building measures 10' W x 16' L x 11' H x 14'6" H

NOTE: There are Qty. 2 I/O modules missing from slot rack but wiring connectors intact



Take a 3D walkthrough at <https://bit.ly/2DhasqR>

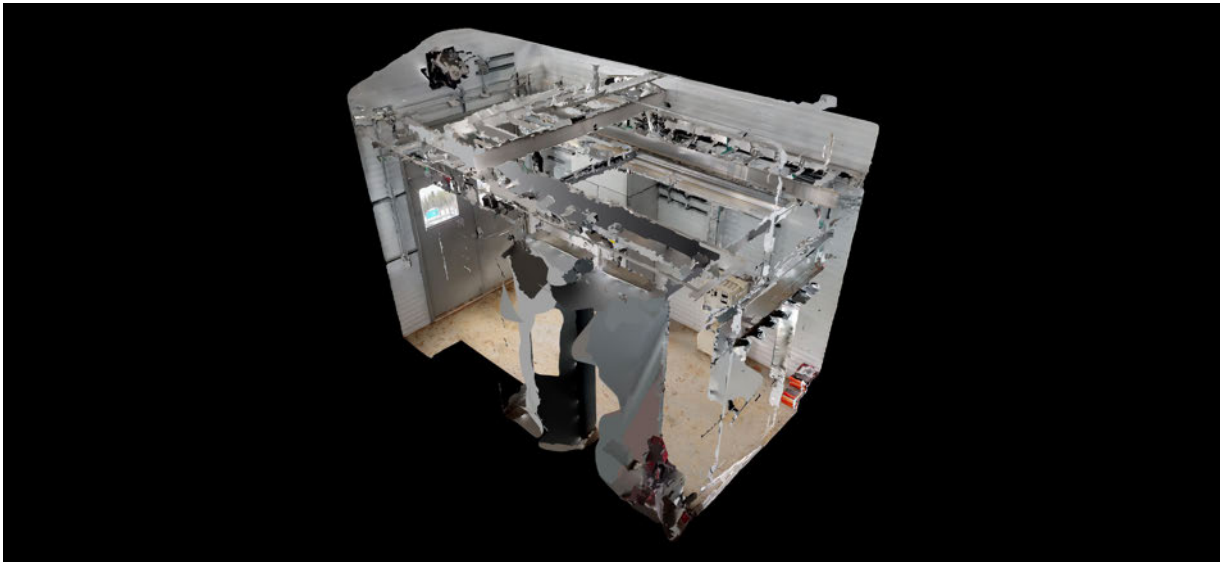












Take a 3D walkthrough at <https://bit.ly/2DhasgR>