



Project 069

10' x 16' Surplus Building (Plus Pumps)

FOR IMMEDIATE SALE



If you can use the pumps, GREAT (and we can help you set it up for that), but more than likely we see this being used by someone who needs an all purpose building. Since it was designed as a pump building, the skid is heavier so whatever you want to put in here will likely work; cut shack, air compressors, VRU, or anything else you can imagine. Additional value can be gained by utilizing the existing wiring in place all wired into JB's on the building side. Sitting in PACE Trucking yard in Nisku it can be hauled out on a moments notice for whatever project you decide.

FOR IMMEDIATE SALE

Project 069

12' x 18' Surplus Building (Plus Pumps)



Condition	Used
Manufactured	ALCO 2002
Location	Pace Trucking - Nisku, AB
Availability	Immediate
Electrical	Wired to Junction Boxes
Dimensions	12' x 18' x 9' Eave



Take a 3D walkthrough at <https://bit.ly/2DRBwDz>

BUILDING & SKID:

- 10' x 16' x 8' Eave
- One (1) Single Man Door w/ Window
- One (1) Double Man Door w/ Window
- Two (2) Windows
- Roof Ridge Vent
- One (1) High Mount Louvered Vent
- One (1) Low Mount Louvered Vent
- Lifting Lugs for loading
- Two (2) Catadyne Heaters w/ 12 V Start

WIRED TO JB'S C/W:

- Interior / Exterior Lights (Fixtures Removed)
- LEL Detection
- Two (2) ESD Button
- HOA for Main Motors
- 12V Receptacle

Optional Configurations

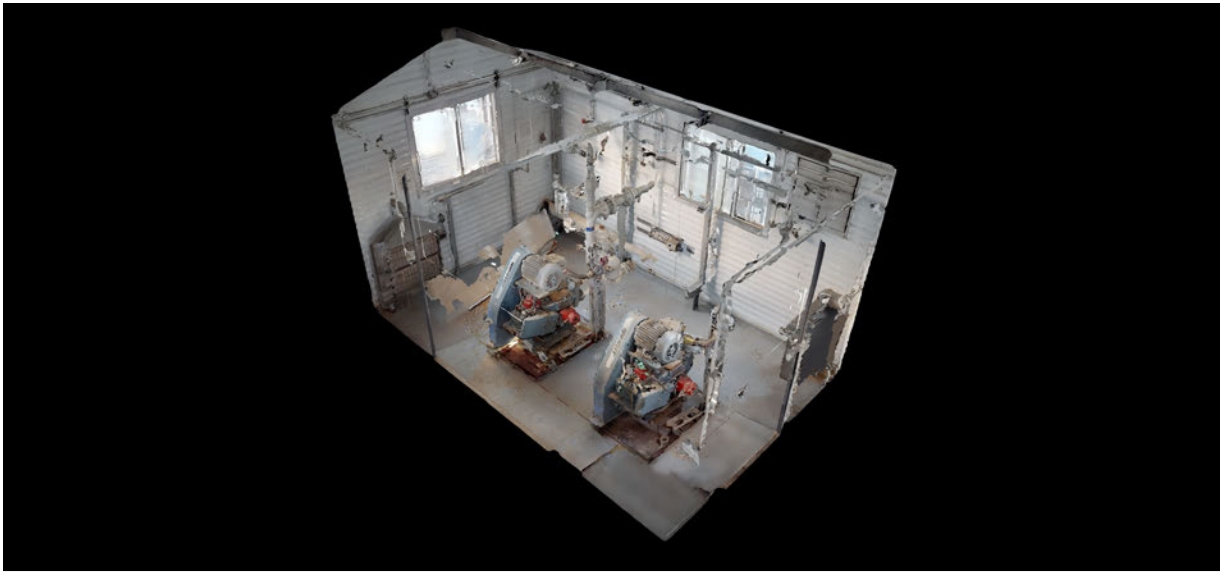
If you can use the pumps, please see below for the curves. There is room to install some supporting equipment such as filters and charge pump if required so let us know if we can help on that end.

Model	Plunger	Gal/Rev	Max PSI	Max kPa	50 RPM		150 RPM		250 RPM		350 RPM		400 RPM	
					m ³ /d	GPM	m ³ /d	GPM	m ³ /d	GPM	m ³ /d	GPM	m ³ /d	GPM
Wheatley P100-A 11D-2M	1125"	0.0188	2042	14079	5.45	1	16.4	3	27.3	5	38.2	7	43.6	8
	125"	0.0232	1654	11404	5.45	1	16.4	3	32.7	6	43.6	8	49.1	9
	1375"	0.0281	1367	9425	5.45	1	21.8	4	38.2	7	54.5	10	60	11
	15"	0.0335	1149	7922	10.9	2	27.3	5	43.6	8	65.4	12	70.9	13
	1625"	0.0393	979	6750	10.9	2	32.7	6	54.5	10	76.3	14	87.2	16
	175"	0.0456	844	5819	10.9	2	38.2	7	60	11	87.2	16	98.1	18
<i>Brake HP Required</i>						1		4		6		9		10









Take a 3D walkthrough at <https://bit.ly/2DRBwDz>