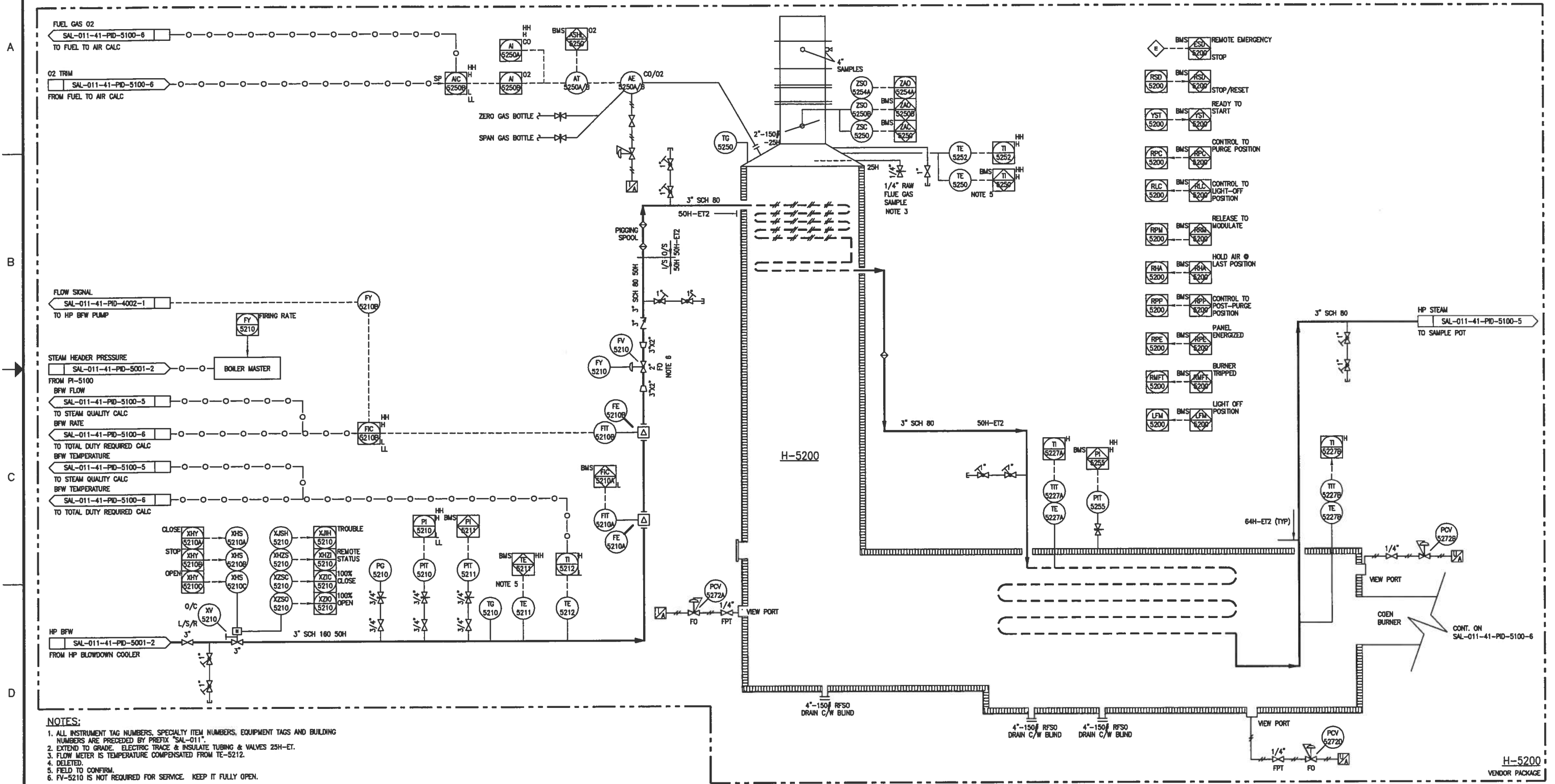


H-5200  
HP STEAM GENERATOR

DUTY: 11980 kW  
FLOW: 23060 kg/hr  
STEAM PRESSURE: 9000 kPa



- NOTES:**
1. ALL INSTRUMENT TAG NUMBERS, SPECIALTY ITEM NUMBERS, EQUIPMENT TAGS AND BUILDING NUMBERS ARE PRECEDED BY PREFIX "SAL-011".
  2. EXTEND TO GRADE. ELECTRIC TRACE & INSULATE TUBING & VALVES 25H-ET.
  3. FLOW METER IS TEMPERATURE COMPENSATED FROM TE-5212.
  4. DELETED.
  5. FIELD TO CONFIRM.
  6. FY-5210 IS NOT REQUIRED FOR SERVICE. KEEP IT FULLY OPEN.

DRAWING NO.		REFERENCE DRAWINGS		PROJEX 06210		REV. A		ISSUED FOR REVIEW (PROJEX 06210)		11/08/10		BY		DATE		CHK		APP.		PE							
DRAWN: -		DATE: -		DESIGNED: -		DATE: -		CHECKED: -		DATE: -		APPROVED: -		DATE: -		PE: -		DATE: -		SCALE: N.T.S.		JOB NO.: 06210		DRAWING NO.: SAL-011-41-PID-5100-4		REV. A	
<p style="text-align: center;"><b>LARICINA</b> <b>PROJEX</b></p> <p style="text-align: center;">TITLE: SW SECTION 26-85-19 W4M SALESKI SC SAGD PILOT PROJECT HP STEAM GENERATOR - H-5200 PIPING AND INSTRUMENTATION DIAGRAM</p>																											

SCALE APPLIES IF PLOTTED ON SIZE "D" (22x34")