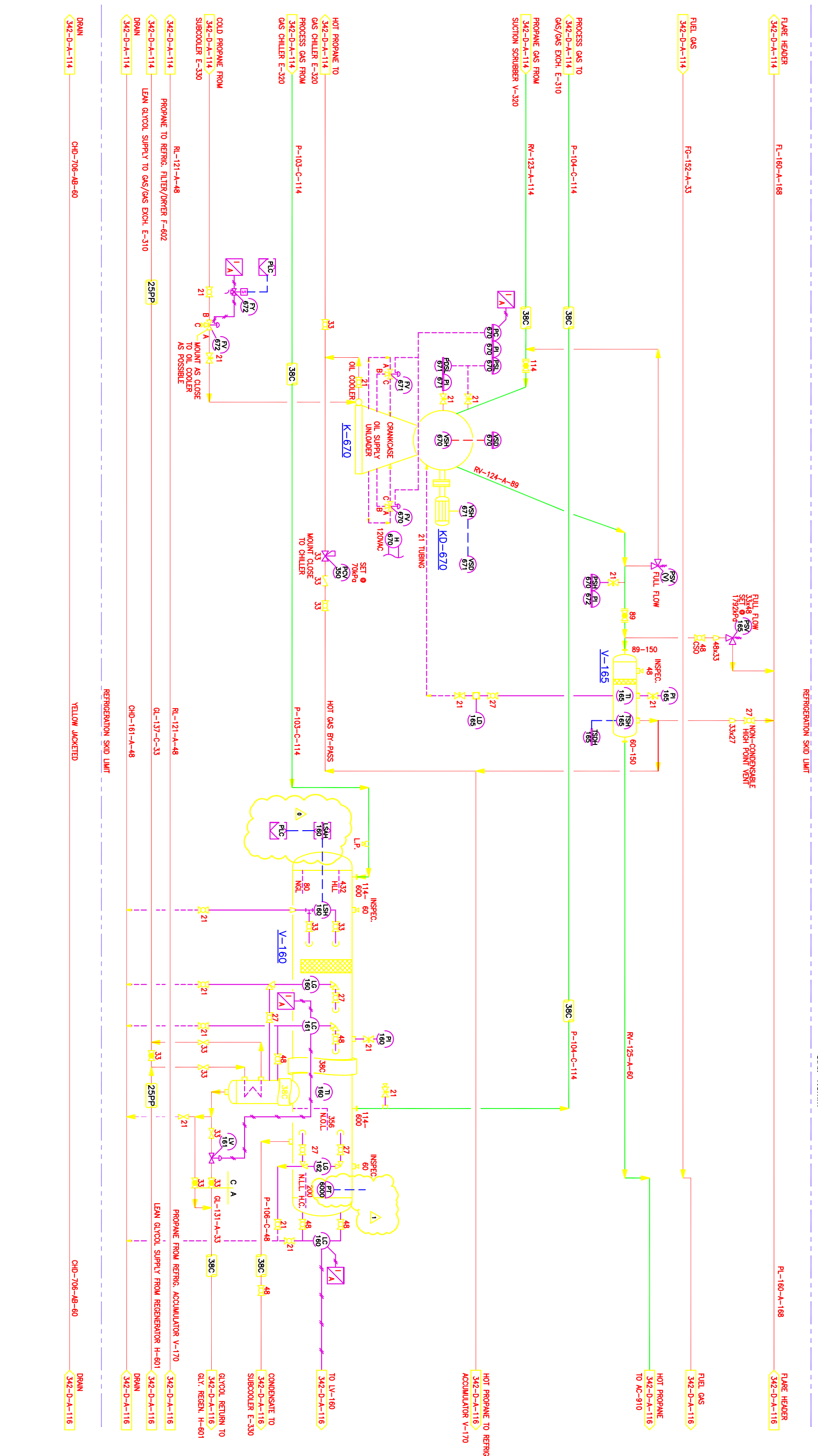


K-670 REFRIGERANT COMPRESSOR **KD-670 COMPRESSOR DRIVER** **V-165 DISCHARGE OIL SCRUBBER** **V-160 LOW TEMP. SEPARATOR**
 MYCOM MODEL P4WB ELECTRIC MOTOR 7.5 KW x P 460/3/60 D.P.: 1792 kPa @ -29°C/63°C
 43 USTR @ 70 KW, 1200 RPM 1.15 SF C.A.: 1.6mm
 SIZE: 324 O.D. x 3048 S/S SIZE: 762 O.D. x 3048 S/S
 D.P.: 869kPa @ -29°C/65°C D.P.: 219 O.D. x 610 LG. BOOT
 C/W 219 O.D. x 610 LG. BOOT C.A.: 1.6mm



NUMBER	REFERENCE DRAWINGS	NO	REVISION DESCRIPTION	BY	DATE	CHD	APPD	ENGINEER & PERMIT STAMPS
01		A	IMPLEMENTED CALWEST TITLE BLOCK - IFA	BC	00.12.19			DARSI ENGINEERING CALWEST DESIGN LTD. CALGARY, ALBERTA, CANADA JENNER COMPRESSOR STATION LSD: 04-23-020-09 W4M REFRIGERATION PLANT PROCESS & INSTRUMENTATION DIAGRAM
02		B	ISSUED FOR BID	BC	01.02.03			
03		0	ISSUED FOR CONSTRUCTION	BC	01.02.26			
04		1	TEMPERATURE TRANSMITTER ADDITION	CEF	01.04.30			ARC RESOURCES LTD. 2100, 440-2nd Ave. S.W. 1st Fl. Calgary, Alberta, Canada SCALE DRAWING NUMBER N.T.S. 342-D-A-115 REV 1