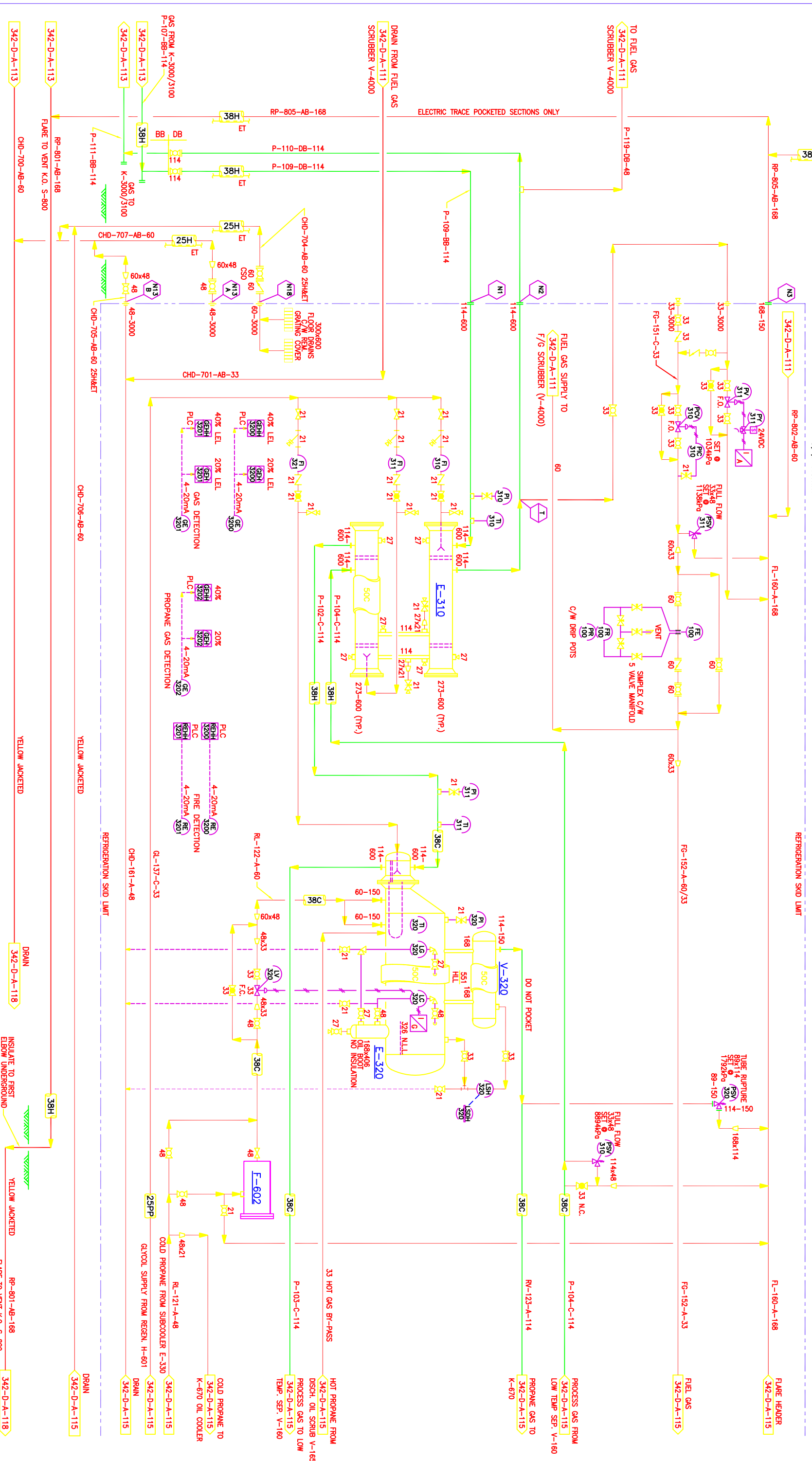


**E-310 GAS/GAS EXCHANGER**  
 SIZE: 273 O.D. x 12186  
 TS: 8894kPa @ -29°C/55°C  
 SS: 8894kPa @ -29°C/55°C  
 C.A.: 1.6mm

**V-320 PROpane SUCTION SCRUBBER**  
 SIZE: 610 O.D. x 3048 S/S  
 TS: 8894kPa @ -29°C/55°C  
 SS: 1792kPa @ -29°C/55°C  
 C.A.: 1.6mm

**E-320 GAS CHILLER**  
 SIZE: 324 O.D. x 508 O.D. x 5255 FT/S  
 TS: 8894kPa @ -29°C/55°C  
 SS: 1792kPa @ -29°C/55°C  
 C.A.: 1.6mm

**E-602 REFRIGERANT FILTER/DRYER**  
 SPORLAN MODEL C-19212P  
 C/W 4 ROW-48 CORES



NUMBER	REFERENCE DRAWINGS	NO	REVISION DESCRIPTION	BY	DATE	CHD/APPD	ENGINEER & PERMIT STAMPS
00163	D-MFS-00412-100	A	IMPLEMENTED CALWEST TITLE BLOCK - IFA	BC	00.12.19		<b>DARSI ENGINEERING</b> CALWEST DESIGN LTD. CALGARY, ALBERTA, CANADA JENNER COMPRESSOR STATION LSD: 04-23-020-09 W4M REFRIGERATION PLANT PROCESS & INSTRUMENTATION DIAGRAM
		B	ISSUED FOR CONSTRUCTION	BC	01.02.03		
		0	ISSUED FOR CONSTRUCTION	BC	01.02.26		

DATE	SCALE	DRAWING NUMBER	REV
00.12.19	N.T.S.	342-D-A-114	0