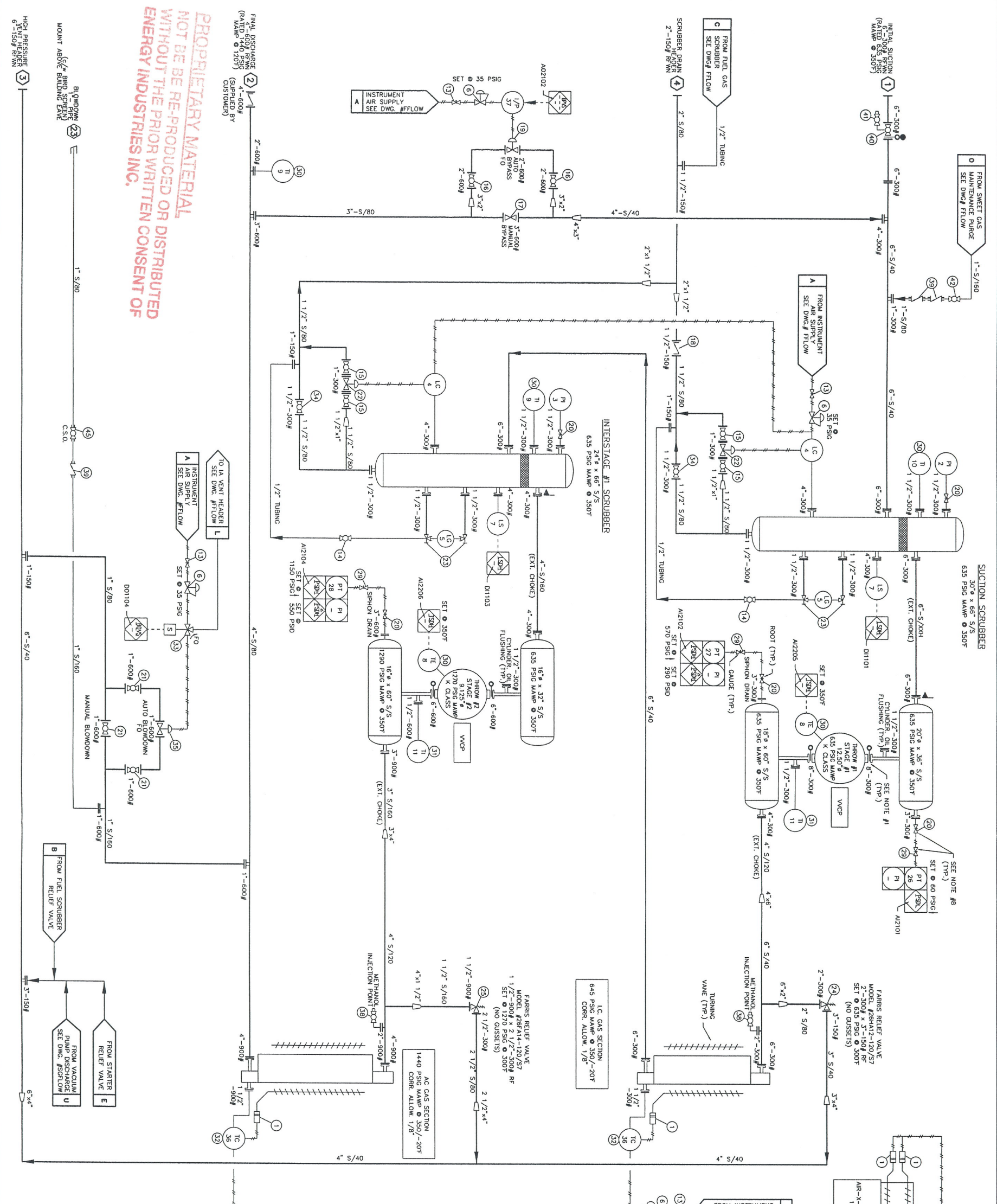


**PROPRIETARY MATERIAL**  
 NOT BE RE-PRODUCED OR DISTRIBUTED  
 WITHOUT THE PRIOR WRITTEN CONSENT OF  
**ENERGY INDUSTRIES INC.**



**MATERIAL SPECIFICATIONS**

PAINT: SURFACE PREPARATION, COMMERCE QUALITY PAINT TO SPEC-685 SPECIFICATION, FOR PIPEWORKS AND SHOP FABRICATED STEEL. INCLUDES PRIMER: GLOVA PRIME 21, OR, ONE COAT.

PAINT: GORONATE GCR #16 MARINE ENAMEL SERIES III, TWO COATS.

TUBING: 316SS TYPE '316' FITTINGS & 316SS TUBING (75' FITTINGS PROCESS STATION) & 316SS BACK-FITTING & 316SS FRONT-FITTING) PROCESS STATION LINE TO BE 1/2\"/>

PIPE SUPPORT: ALL PIPE CLAMP WITH TO BE 1\"/>

PROCESS SUPPORT: 100# X-40XV, 1/8\"/>

SCRUBBERS: 100# X-40XV, 1/8\"/>

ENGINE: ESSEQUE OIL PLUS-30 IN ENGINE & COMPRESSOR FRAME. ESSEQUE OIL PLUS-30 FOR CYLINDER LUBRICATION. ESSEQUE OIL PLUS-30 FOR CRANKCASE LUBRICATION. ESSEQUE OIL PLUS-30 FOR WATER SYSTEM. ESSEQUE OIL PLUS-30 FOR WATER SYSTEM.

ON SEPARATE SHEET TO BE PROVIDED WITH DRAWING.

SPACER PLATES ARE PROVIDED FOR FRAME.

UNIT COMPLETE WITH BMR UP AROUND PERIMETER OF ENGINE AND COMPRESSOR.

BYPASS/BLOWDOWN LINES ARE TO BE BUTTWELDED.

NOTE #3: PRESSURE VESSELS TO BE REGISTERED IN ALBERTA & B.C.

NOTE #4: UNIT COMES COMPLETE WITH 3 TON OVERHEAD BRIDGE CRANE.

NOTE #5: BLOWING ON ALL PROCESS FLANGE CONNECTIONS TO BE COMPLETED BY THE CONTRACTOR.

NOTE #6: ALL BOLTS ARE 316 STAINLESS STEEL REPLIAC.

NOTE #7: ROOT VALVES TO BE PROVIDED AT PRESSURE SOURCE AND THE PRESSURE TRANSDUCER. TWO PRESSURE TRANSDUCERS AND THE PRESSURE TRANSDUCER. TWO PRESSURE TRANSDUCERS AND THE PRESSURE TRANSDUCER.

NOTE #8: TWO PRESSURE TRANSDUCERS AND THE PRESSURE TRANSDUCER.

NOTE #9: TWO PRESSURE TRANSDUCERS AND THE PRESSURE TRANSDUCER.

**GENERAL INFORMATION**

COMP. FRAME - AERL GRT/2 (G/L LC DISTANCE FEET)

SERIAL NUMBER - F-19354

ENGINE - WAUKESHA F3524S1

RATED 840 HP @ 1200 RPM

SERIAL NUMBER - 402811

COOLER - AIR-X-CHANGERS O-MODEL 1200H-88-18

CYL. STAGE #1 - SERIAL NUMBER = C09901

CYL. STAGE #2 - SERIAL NUMBER = C09902

PANEL - EXACTA SERIES X - SERIAL NUMBER = 80183

**LEGEND**

PROCESS LINES

FUEL GAS, START GAS, DRAIN AND VENT LINES

SUPPLY (CLEAN) OIL LINES

WASTE OIL LINES

WATER LINES

PRELUBRIC TUBING

ELECTRICAL WIRING

CAPILLARY LINES

SPACER

SCREEN (CONE STRAINER)

PANEL ALARM/SHUTDOWN (ELECTRIC)

PANEL ALARM/SHUTDOWN (PNEUMATIC)

LOCAL MOUNTED INSTRUMENT

PANEL MOUNTED INSTRUMENT

PNEUMATIC TO CURRENT

**SOUR PROCESS GAS (6% H2S & 3.3% CO2)**

No.	REVISION	DATE	BY
1	ISSUED FOR CONSTRUCTION	12/08/03	CD
2	REVISED I.C. DRAIN AND NOTE ON PIPING, ADDED PANEL CHANNEL NUMBER	12/18/03	CD
3	AS BUILT	02/03/04	CD

**ENERGY INDUSTRIES INC.**

4303 - 117th STREET N.E. CALGARY ALBERTA CANADA

CUSTOMER: DEVON CANADA CORPORATION  
 GREEN COMPRESSOR STATION  
 L30 - B-23-1/94-G-7

TITLE: PROCESS FLOW DIAGRAM  
 WAUKESHA F3524S1 / AERL J0K/2-2  
 AIR-X-CHANGERS 1200H-88-18

SCALE: NONE  
 DATE: 11/21/03  
 UNIT: # 1105  
 DRAWING NO.: 1105-FLOW  
 REV: 3